



Use cases –Healthcare

Modern data visualization tools in healthcare convert complex data into user-friendly visuals that are easy to understand for its stakeholders, be they doctors, patients, or government officers. Below, we'll define the primary types of visuals now used in the medical industry.

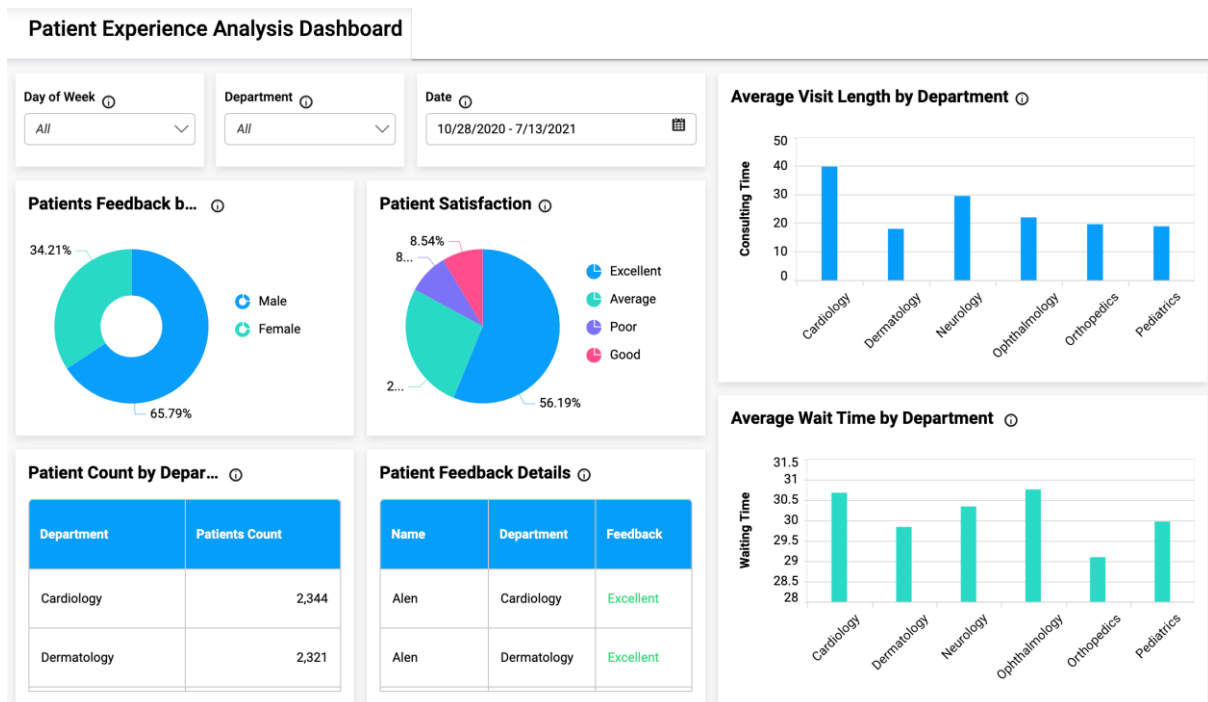
Interactive dashboards

Dashboards combine several interactive reports and are the most common visualization tool used by healthcare organizations. They can be built into **existing software together with data analysis functionality** or be a part of reporting software tailored to the organization's specific needs.

There are three main types of dashboards:

- **Operational** for displaying real-time data
- **Strategic** for showing patterns and trends over time
- **Analytical** for more advanced analytics

Below is an example of an analytical dashboard showing the results of patient experience analysis.



Interactive apps, sites, and widgets

Interactive maps, sites, or widgets allow users to choose how they interact with the data and focus on what's relevant. For example, the Institute for Health Metrics and Evaluation offers an



SNS COLLEGE OF TECHNOLOGY, COIMBATORE –35 (An Autonomous Institution)



DEPARTMENT OF COMPUTER SCIENCE AND ENGINEERING

interactive [website](#) to analyze death rates and leading death causes worldwide. There, you can switch between maps and charts or choose a specific country, age, or gender group.

