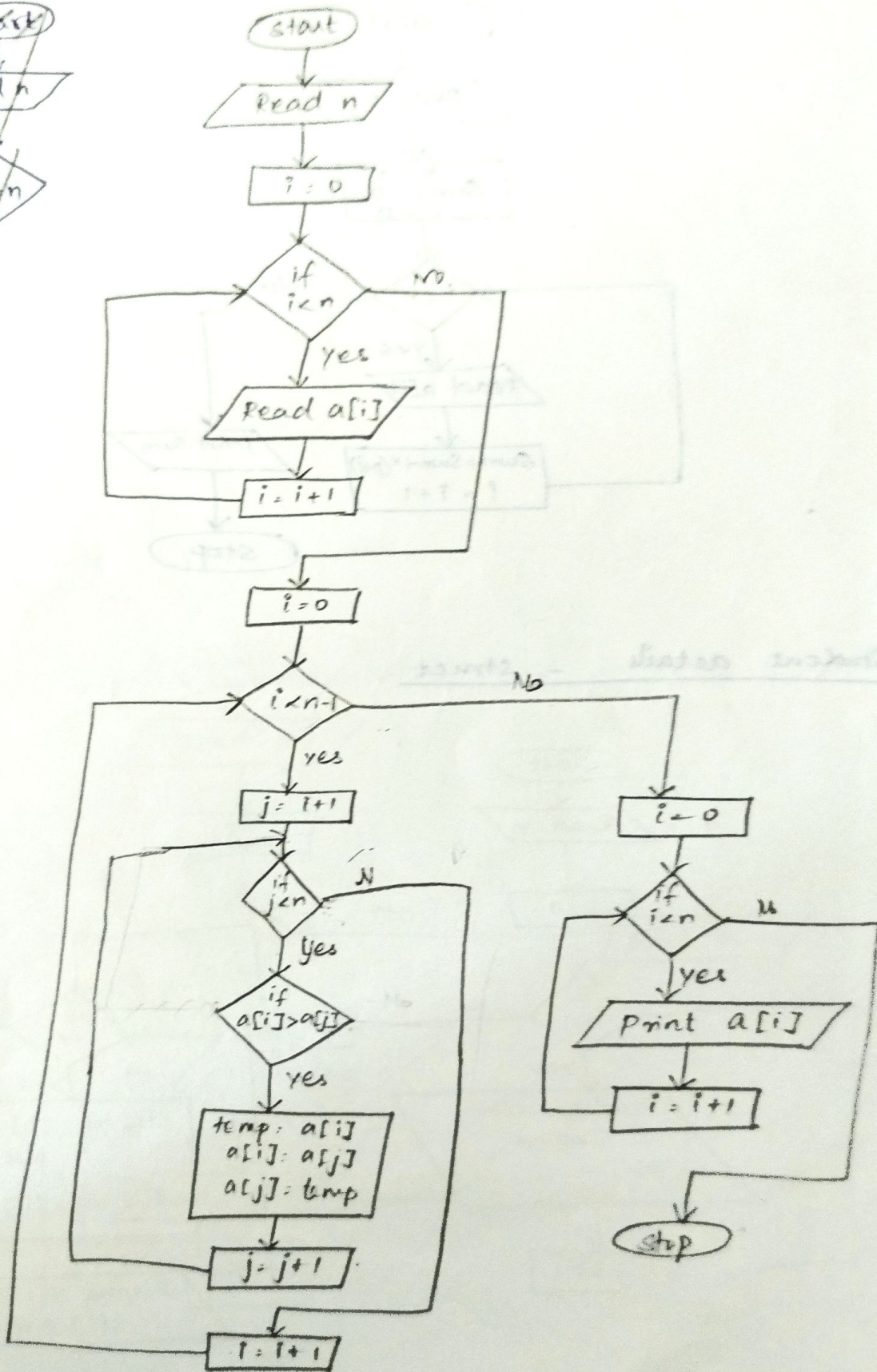
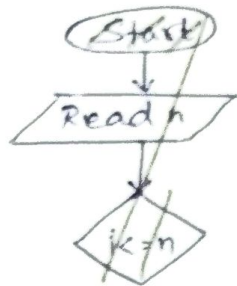
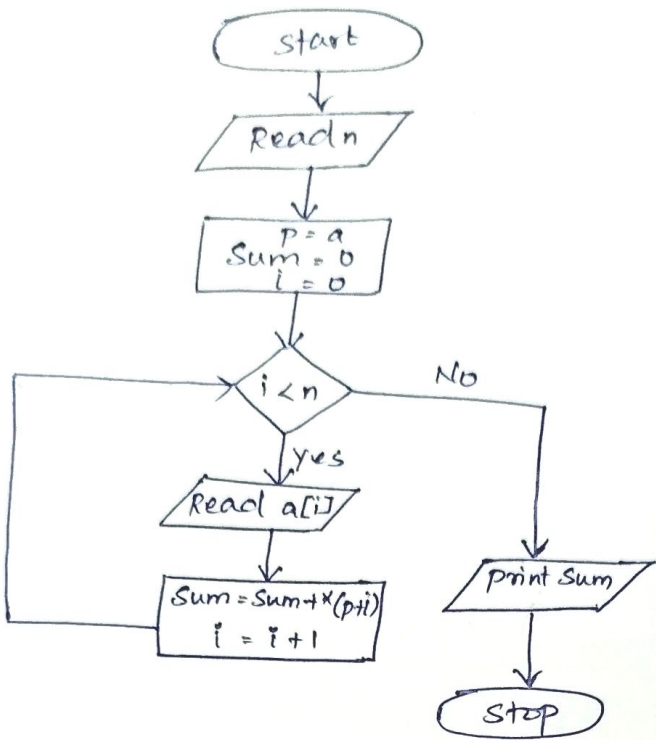


chart

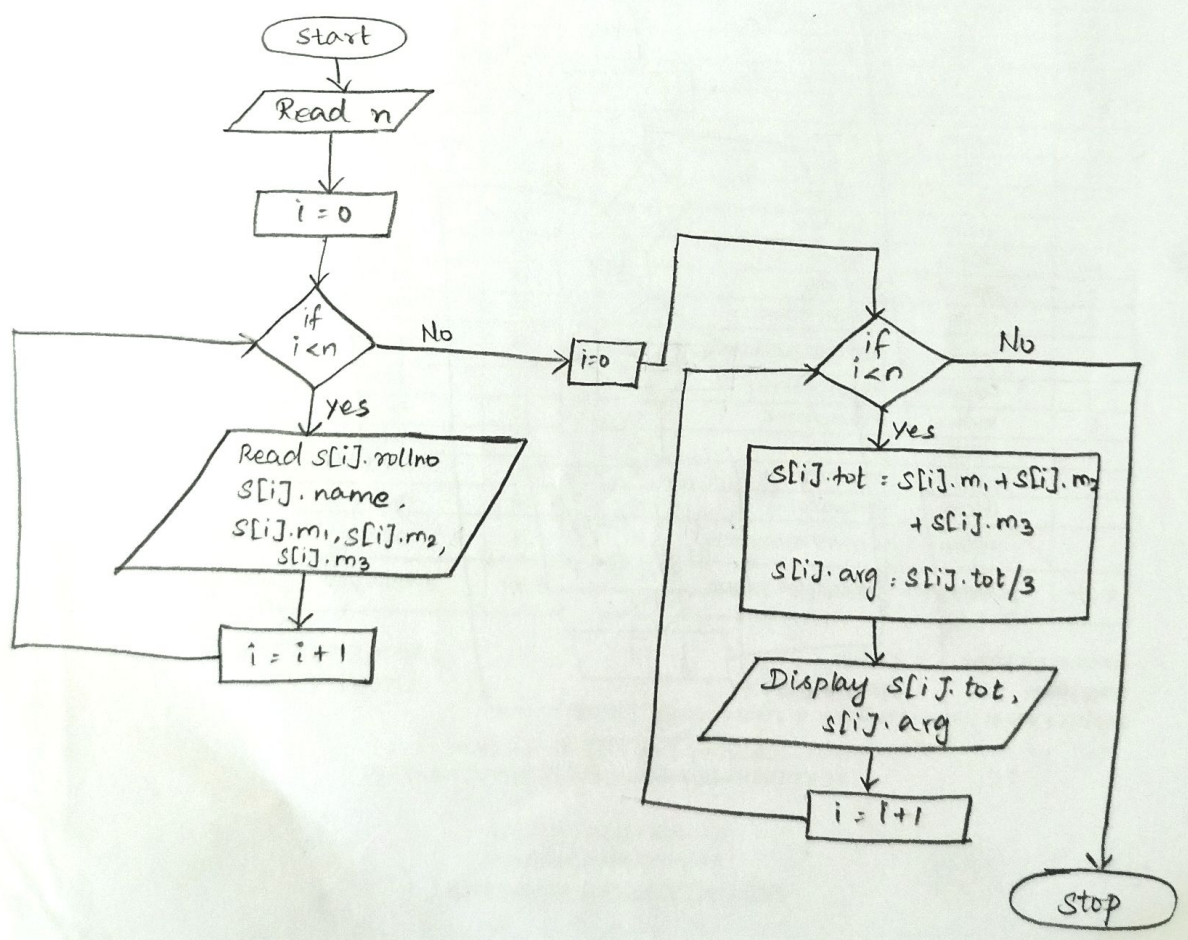
sorting using one dimensional array.



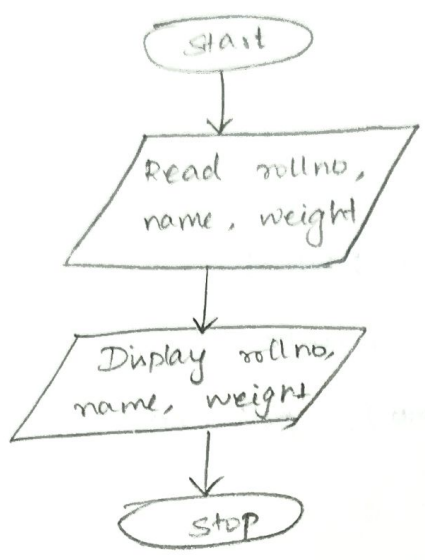
② Sum of n numbers.



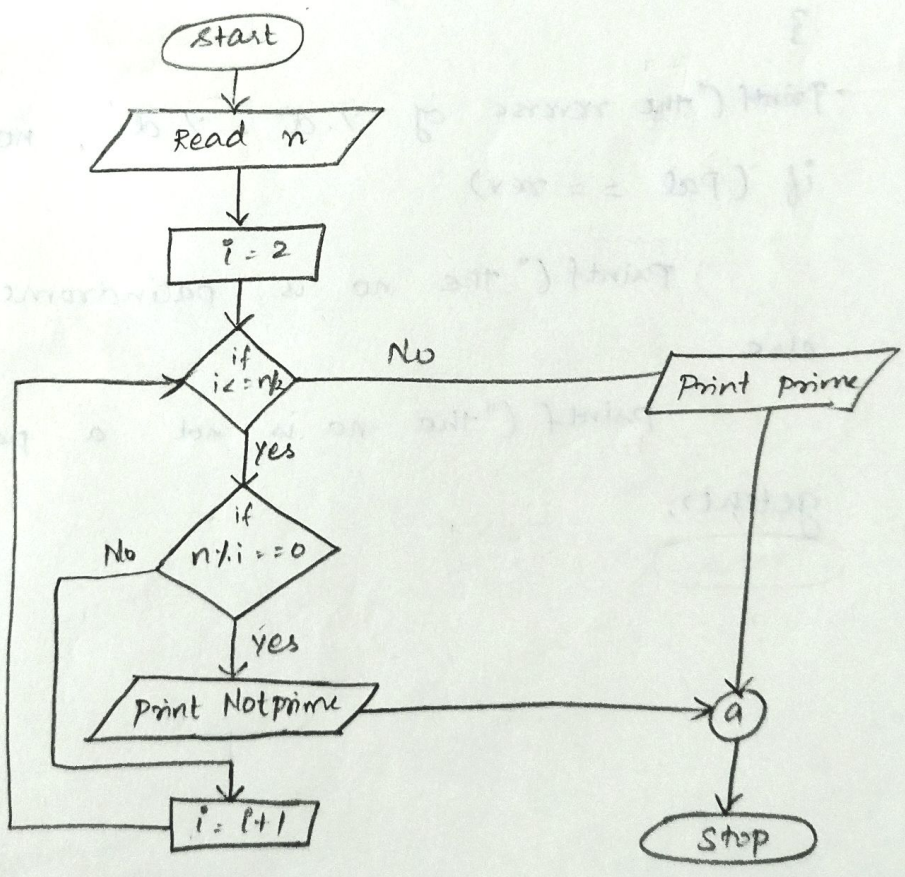
③ Student details - struct.



student details - union.



⑤ prime or not.



⑥ Reverse the number - palindrome.

```
#include <stdio.h>
```

```
#include <conio.h>
```

```
void main()
```

```
{
```

```
    int no, rev=0, r, pal;
```

```
    printf("In Enter number");
```

```
    scanf("%d", &no); pal = no;
```

```
    while (no > 0)
```

```
    {
```

```
        r = no % 10;
```

```
        rev = (rev * 10) + r;
```

```
        no = no / 10;
```

```
    }
```

```
    printf("the reverse of %d = %d", no, rev);
```

```
    if (pal == rev)
```

```
        printf("the no is palindrome");
```

```
    else
```

```
        printf("the no is not a palindrome");
```

```
    getch();
```

```
}
```