



SNS COLLEGE OF TECHNOLOGY

Vazhiampalayam, Coimbatore-35

(An Autonomous institution)

Accredited by **NBA-AICTE** and Re-Accredited by **NAAC-UGC with A+ Grade**

Approved by **AICTE**, New Delhi & Affiliated to **Anna University**, Chennai



DEPARTMENT OF CHEMISTRY

**COURSE NAME : 23CHT103- ENVIRONMENTAL SCIENCE AND
SUSTAINABILITY**

I YEAR / I SEMESTER

UNIT : 2. ENVIRONMENTAL POLLUTION

TOPIC : 2. SOIL POLLUTION



BRAINSTORMING WITH RECAP



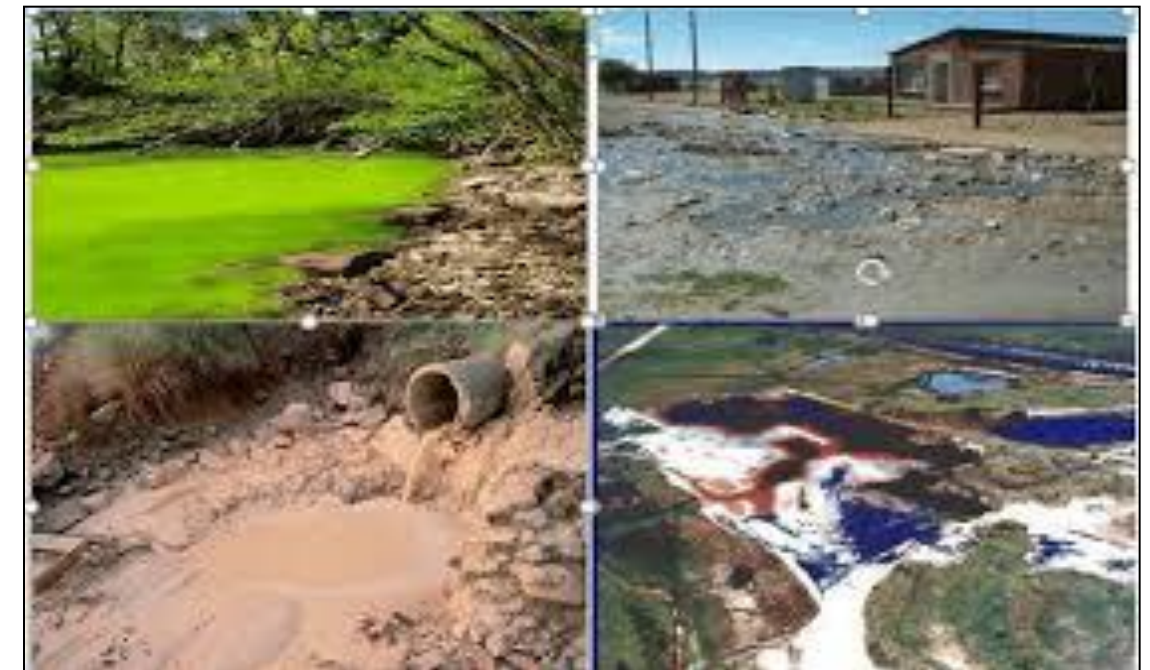
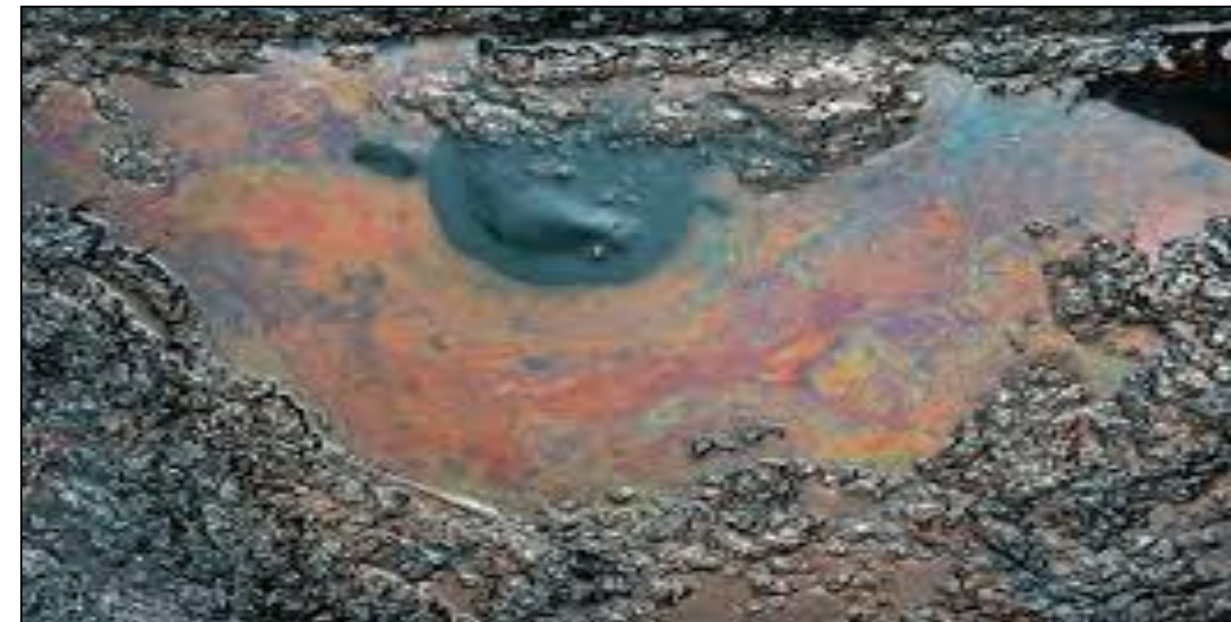
INTRO



- The contamination of soil by human & natural activities which affects all living beings.
- Any physical or chemical change in the soil that adversely affects the health of humans and other organisms



- Composition of soil
- Minerals (45%)
- Organic matter(5%)
- Soil water (25%)
- Soil air (25%)



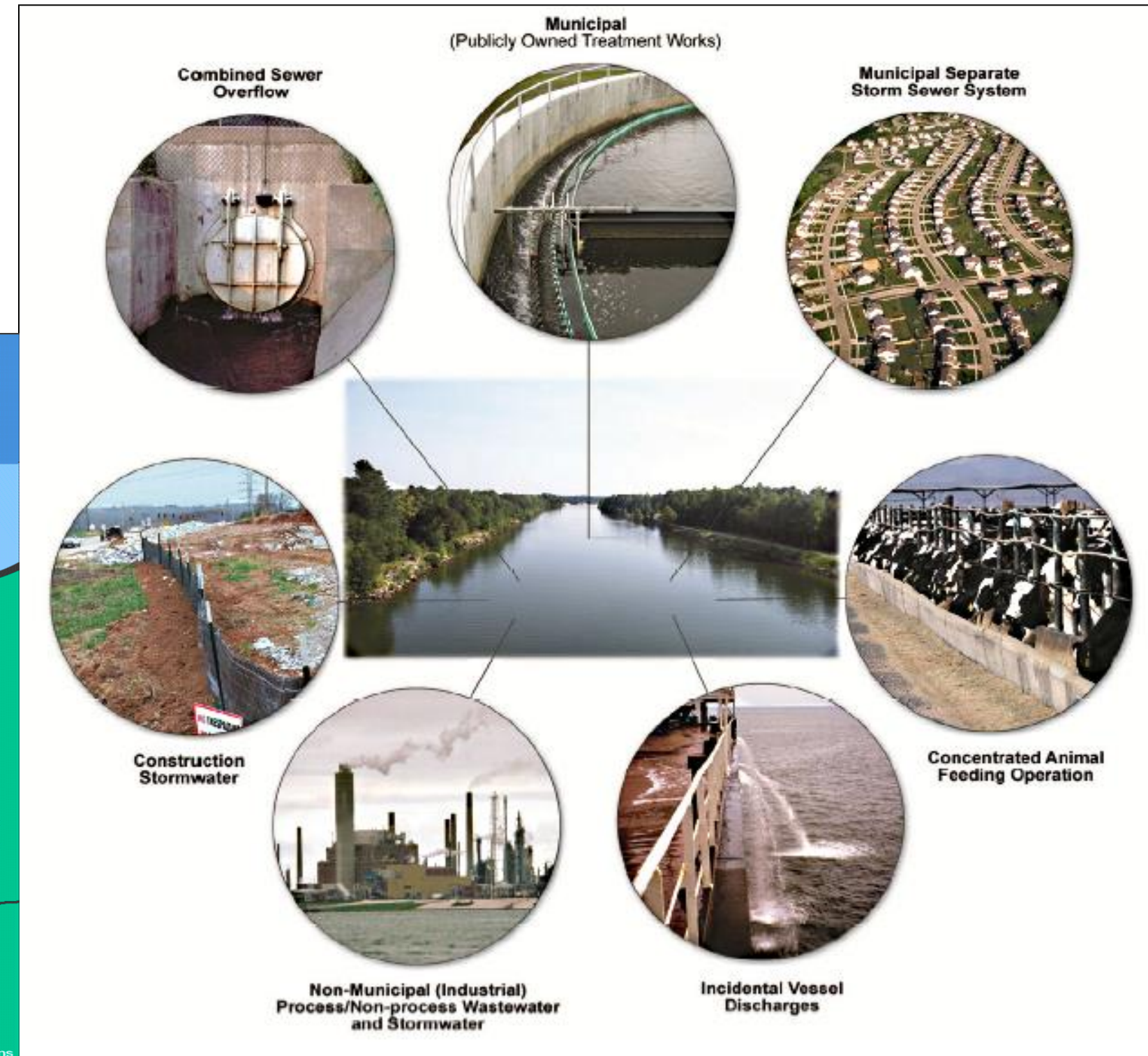
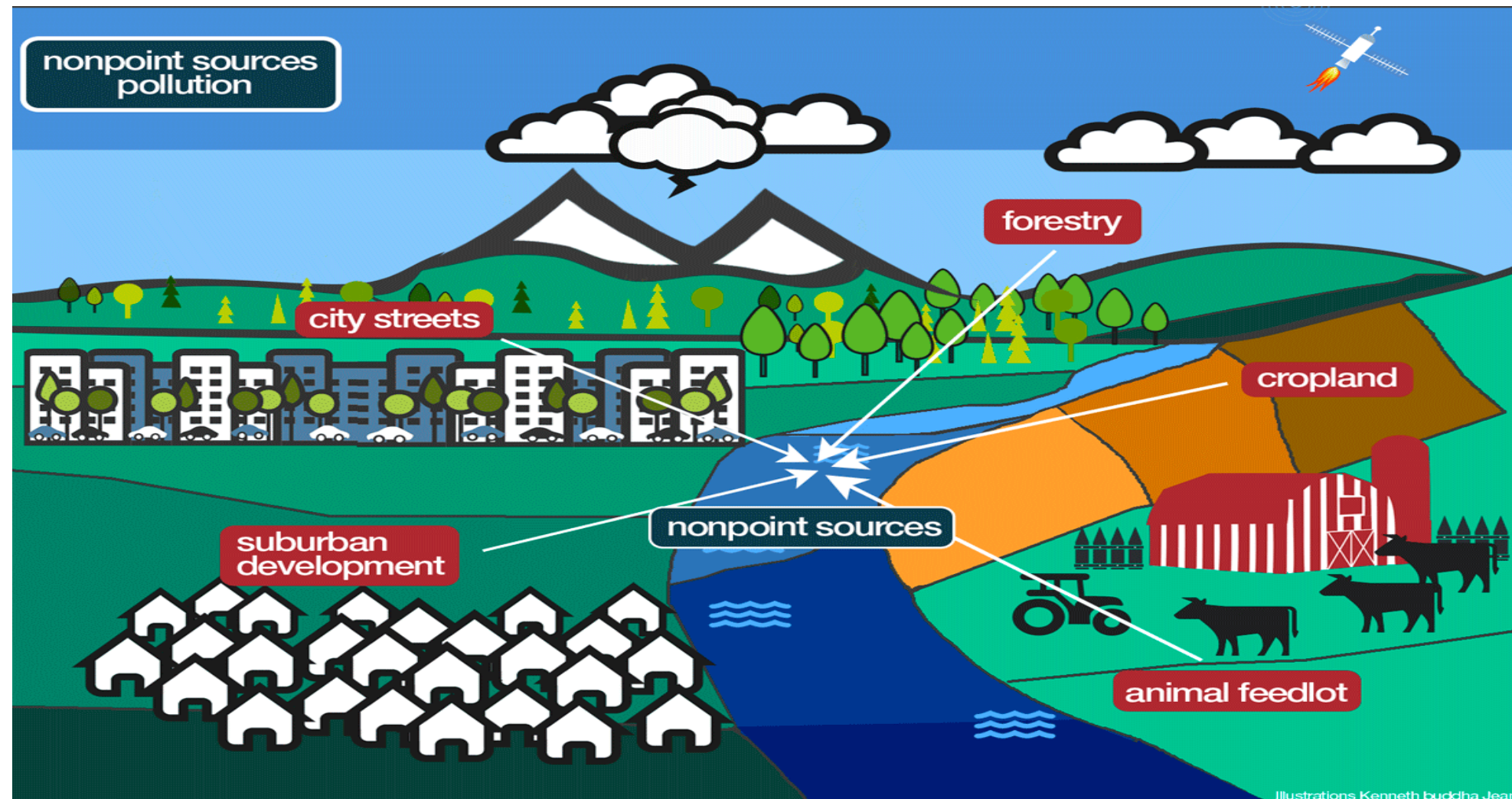


SOURCES



1. Industrial waste- Organic & Inorganic waste

2. Urban waste





SOURCES



3. Agricultural waste

4. Chemicals/pesticides waste





SOURCES

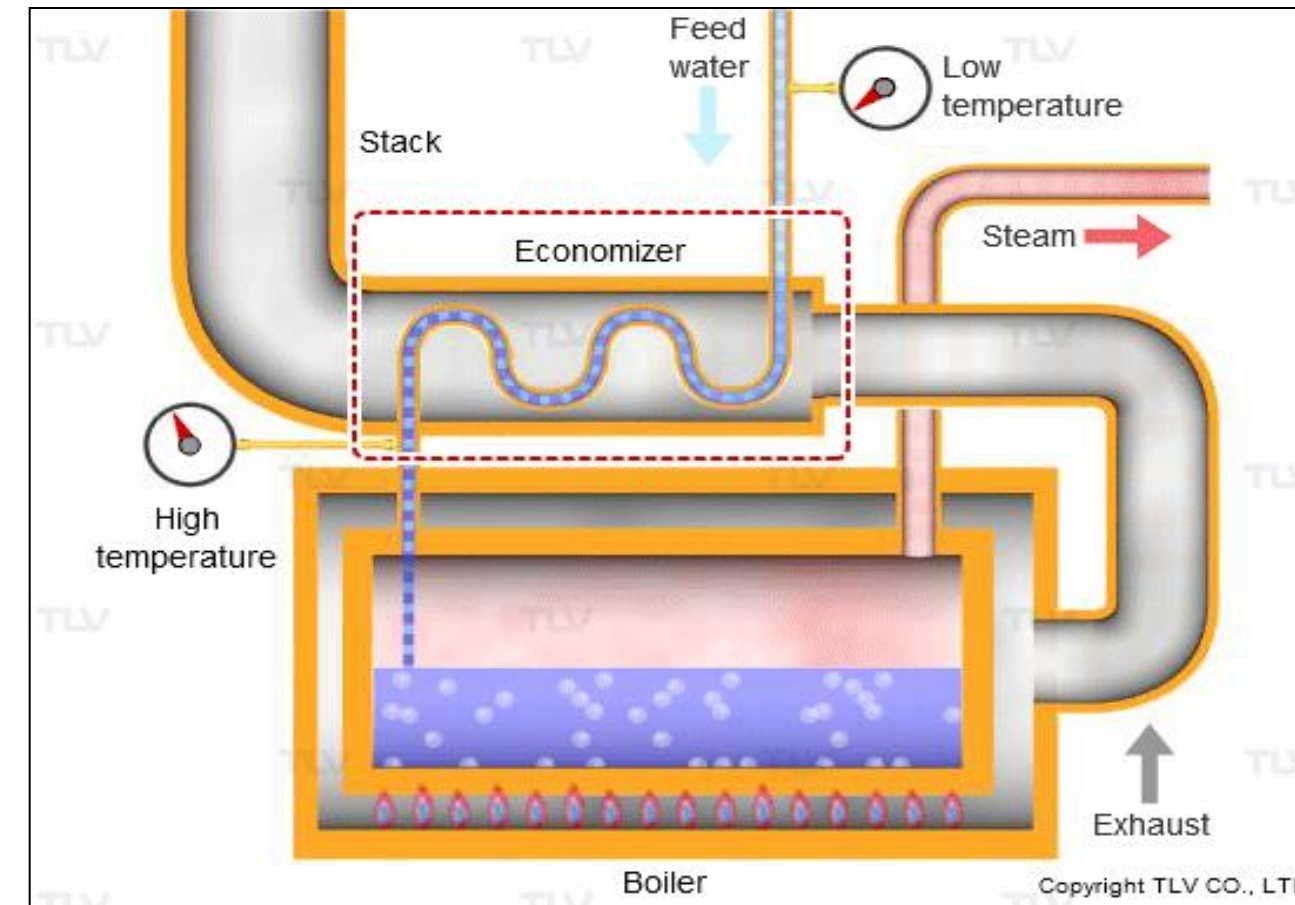


5. Radio active waste



6. Biological agents

7. Waste heat



8. Air pollution

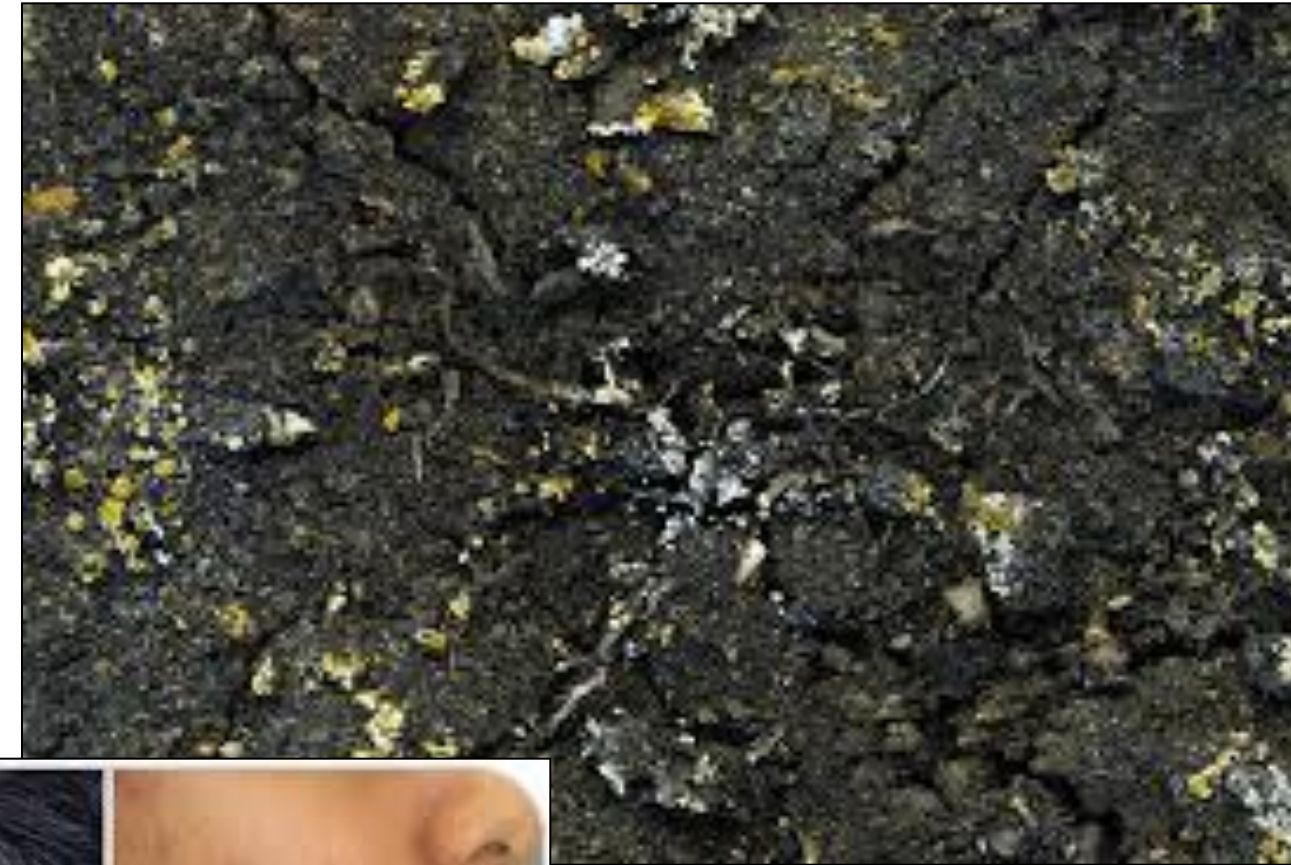




EFFECTS



1. Reduce productivity
2. Sewage sludge increase water pollution
3. Air pollution contaminate land near by roads
4. Gold mining increase all kind of pollution
5. Waterlogging
6. Pathogens
7. Skin diseases
8. Infertility





Activity



CONTROL MEASURES

1. Source control

- Waste water treatment- before discharge
- Plant more trees- avoid surface runoff
- Integrated usage of pest management
- N fixing plants
- Limits the usage of pesticides & fertilizers
- Proper drainage system
- Maintenance of water bodies
- monitoring





ASSESSMENT



List out the various sources & effects of soil pollutants



SUMMARY



REFERENCES



1. Dr. A.Ravikrishnan, Environmental science & Engineering” Srikrishna hitech Pub. Co. Ltd,2013.
2. G.Tayer Miller :Environmental Science”, Cenage Learning India Pvt Ltd, 2011.
3. Benny joseph, “Environmental science & engineering” Tata McGraw-Hill.Pub.Co.Ltd. New Delhi.2009.