



SNS COLLEGE OF TECHNOLOGY

Coimbatore-35
An Autonomous Institution

Accredited by NBA – AICTE and Accredited by NAAC – UGC with 'A++' Grade
Approved by AICTE, New Delhi & Affiliated to Anna University, Chennai



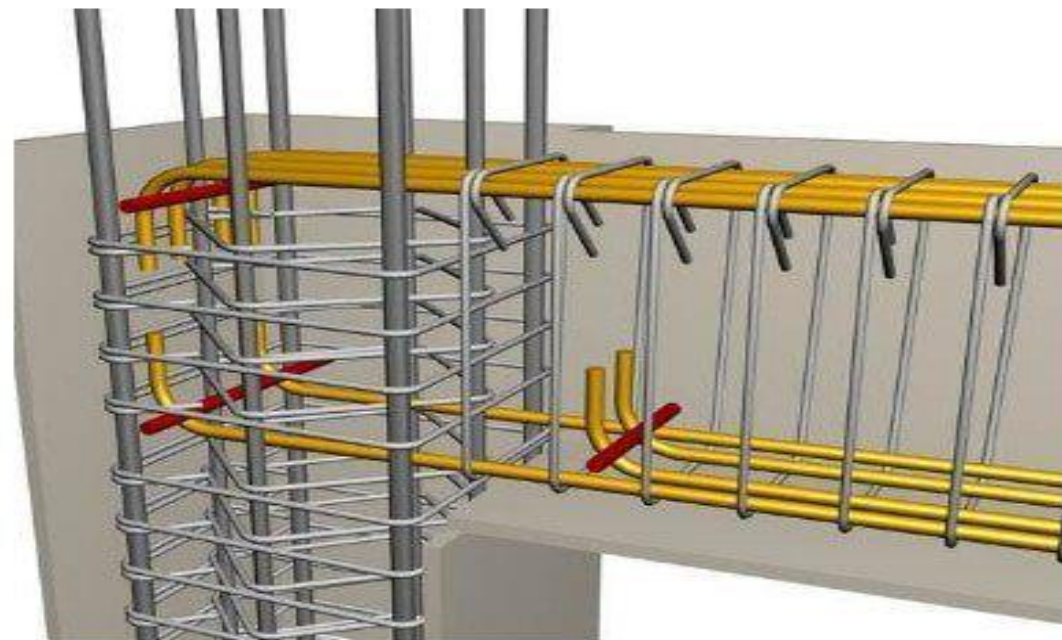
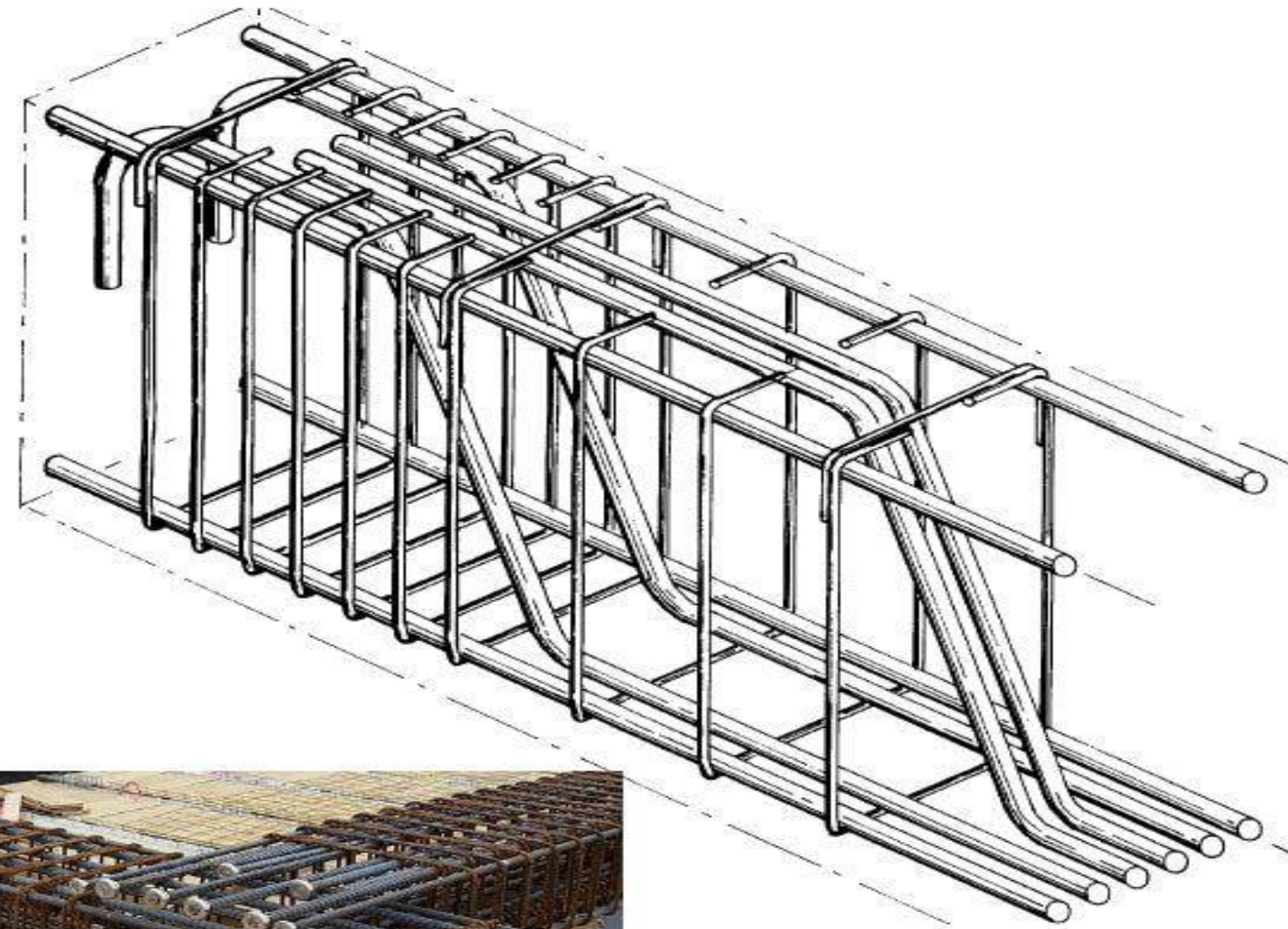
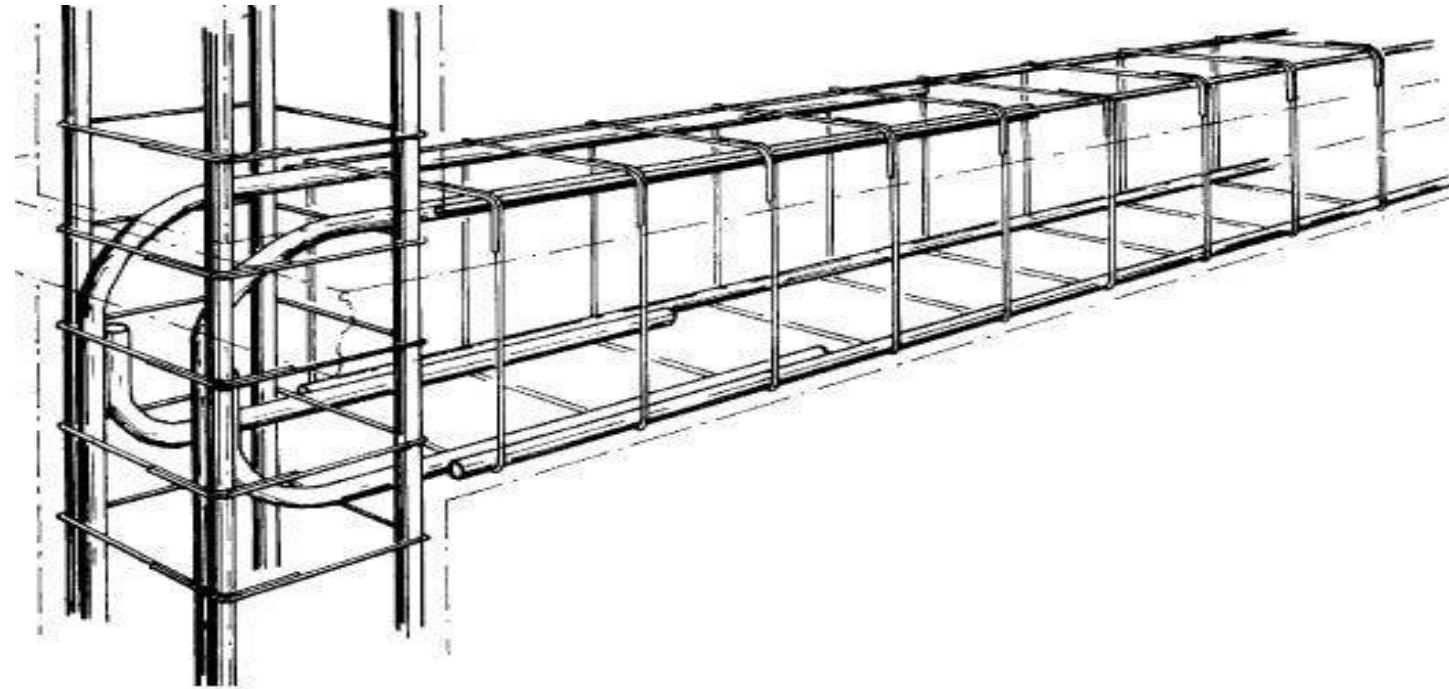
DEPARTMENT OF CIVIL ENGINEERING

23GET102-BASIC CIVIL AND MECHANICAL ENGINEERING

I YEAR ISEM

UNIT 2 – BUILDING COMPONENTS

Topic 5 : Beam And Types





Beam



- ❖ Structural member used for bearing loads
- ❖ Resisting vertical loads, shear forces and bending moments

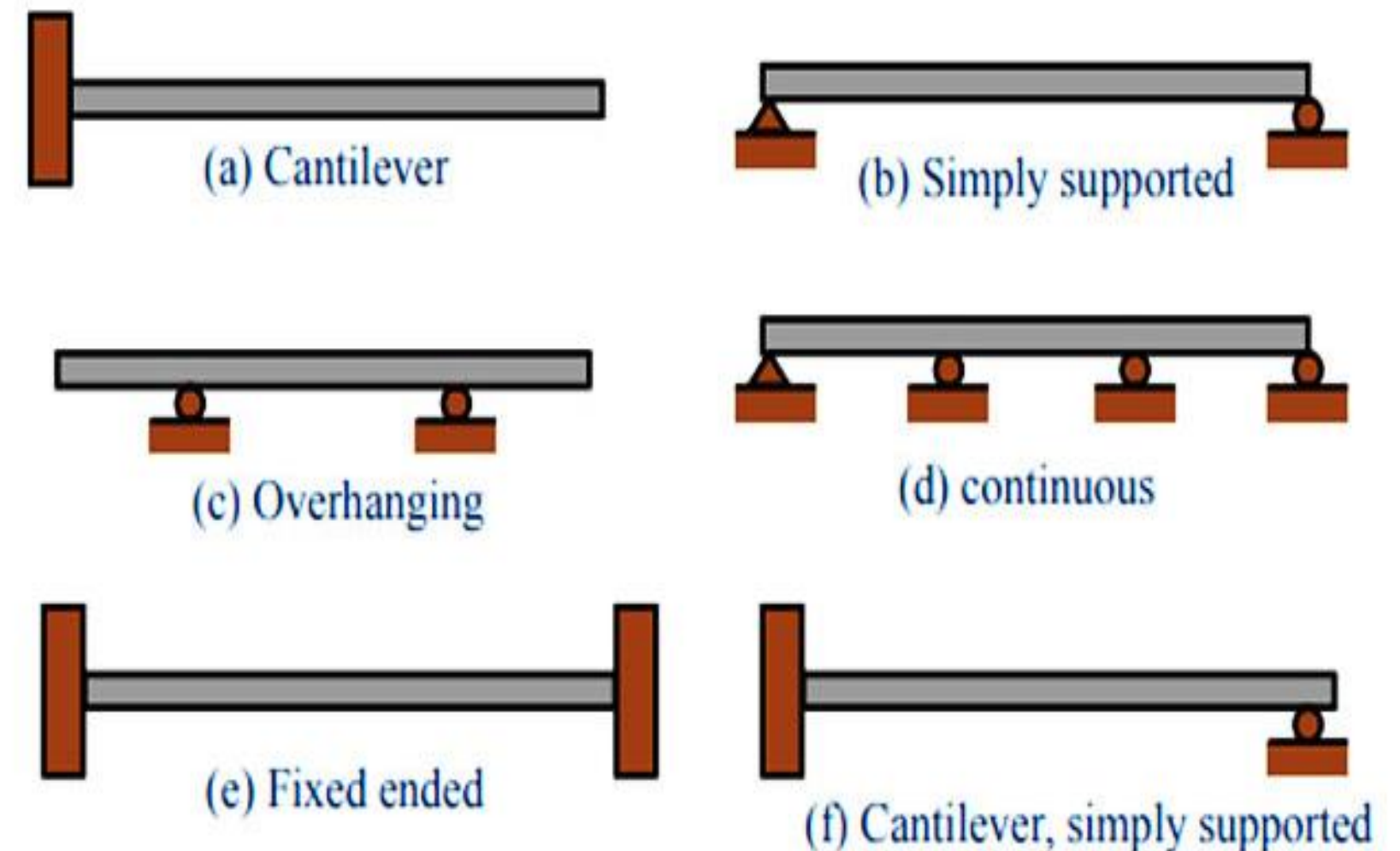




Classification of Beam-Based on the type of support



- ❖ Simply supported beam
- ❖ Cantilever beam
- ❖ Overhanging beam
- ❖ Continuous beam
- ❖ Fixed beam

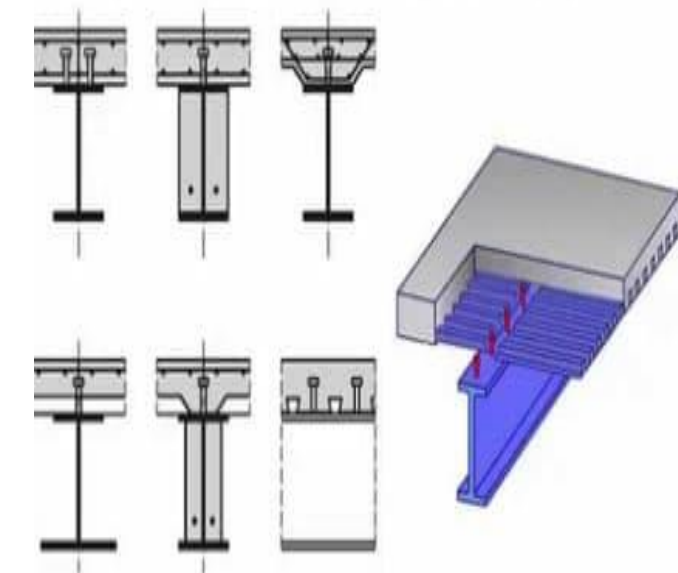
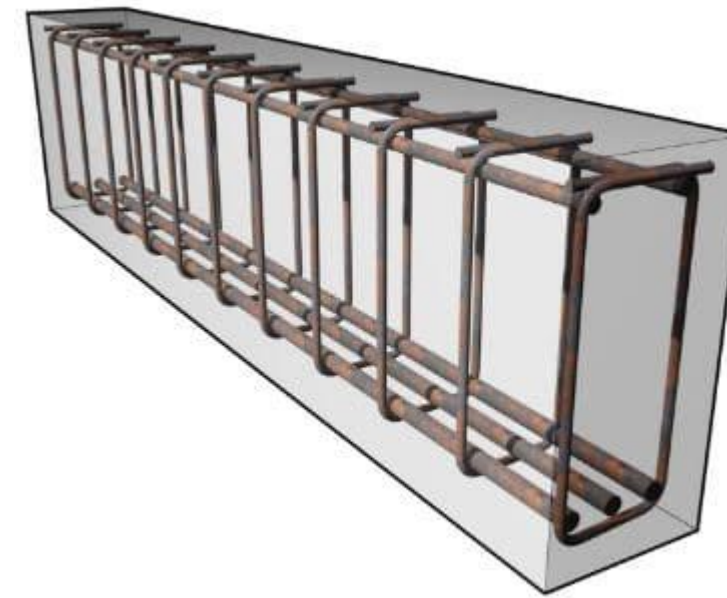




Classification of Beam-Based on Construction Materials



- ❖ Reinforced Concrete Beams
- ❖ Steel Beams
- ❖ Timber beams
- ❖ Composite Beams





QUESTION TIME



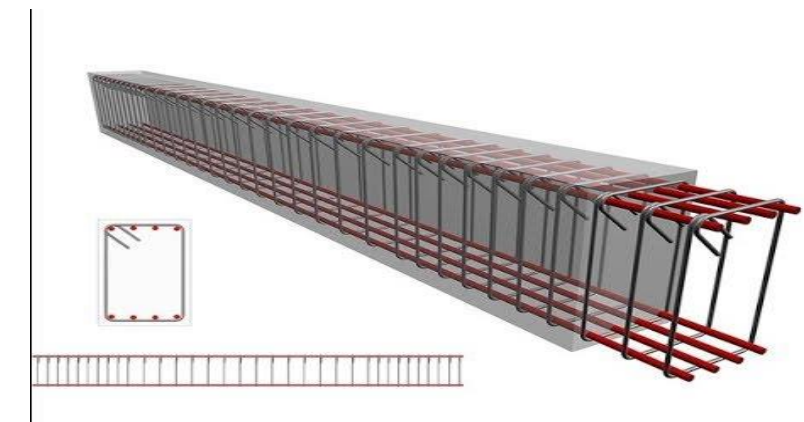
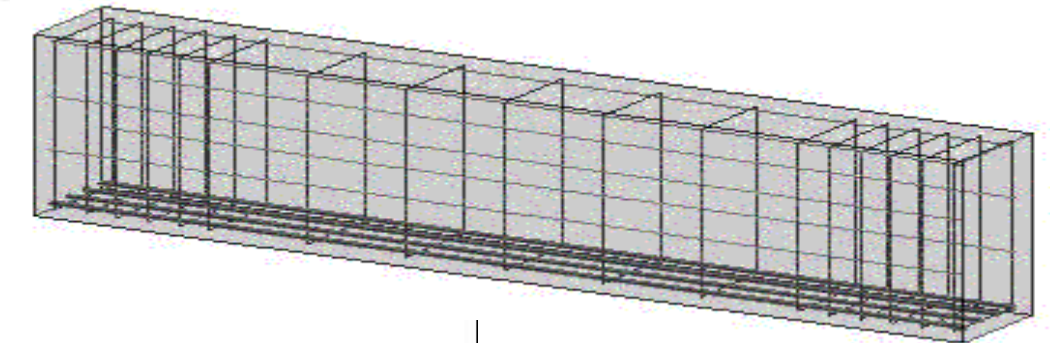
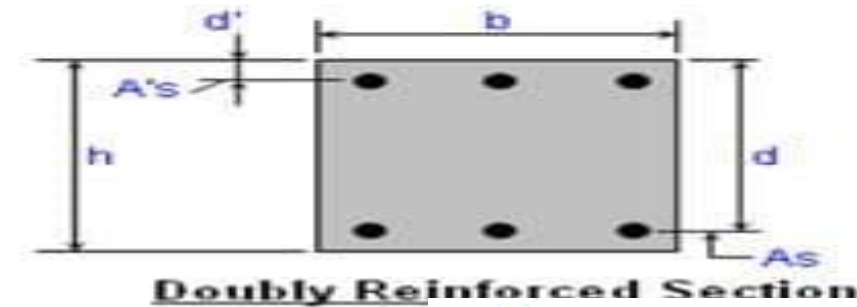
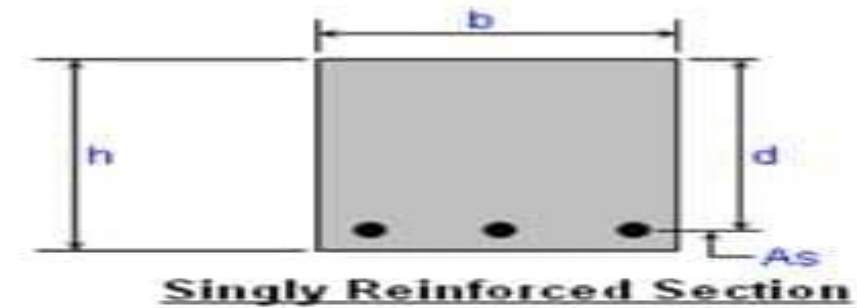
WHY WE GO FOR COMPOSITE
CONSTRUCTION....???



Classification of Beam-Based on Cross-Section Shapes



- ❖ Rectangular beam
- ❖ T-section beam
- ❖ L-section beam





Classification of Beam-Based on Cross-Section Shapes

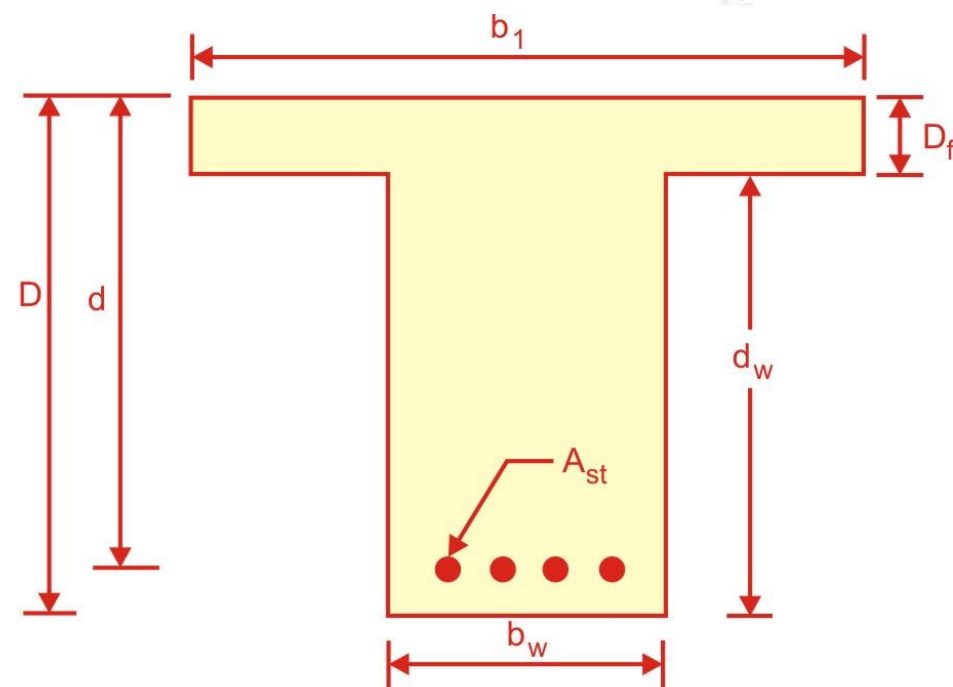
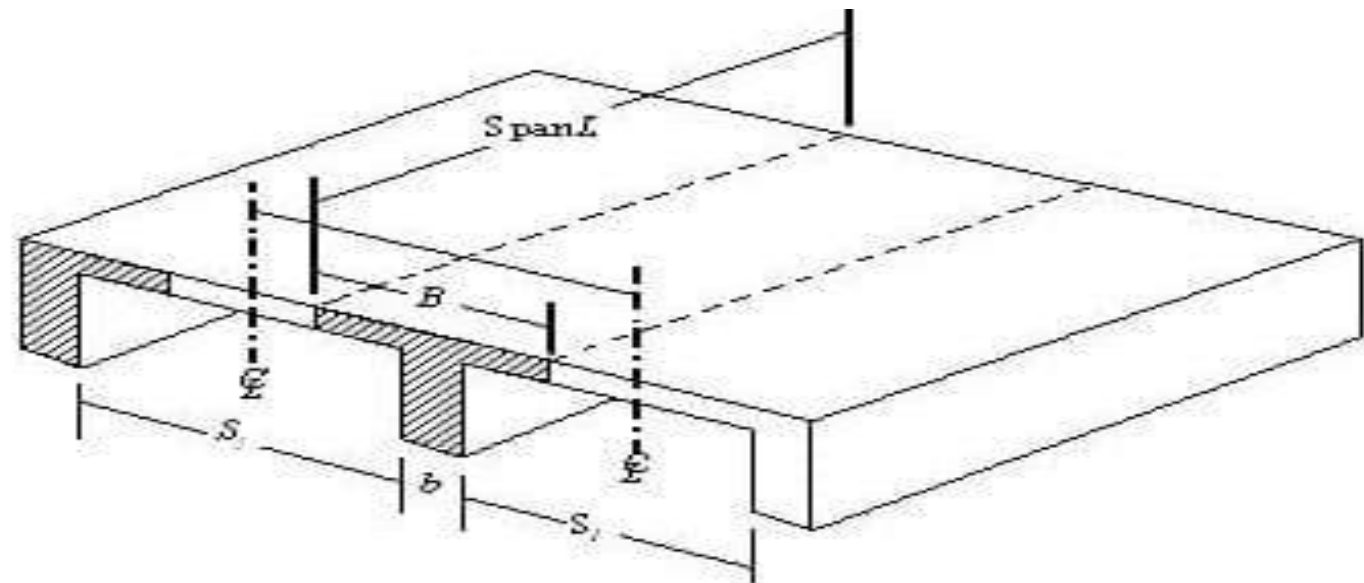
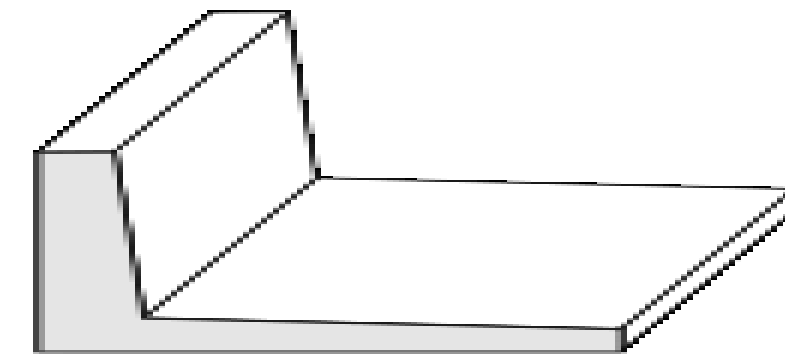
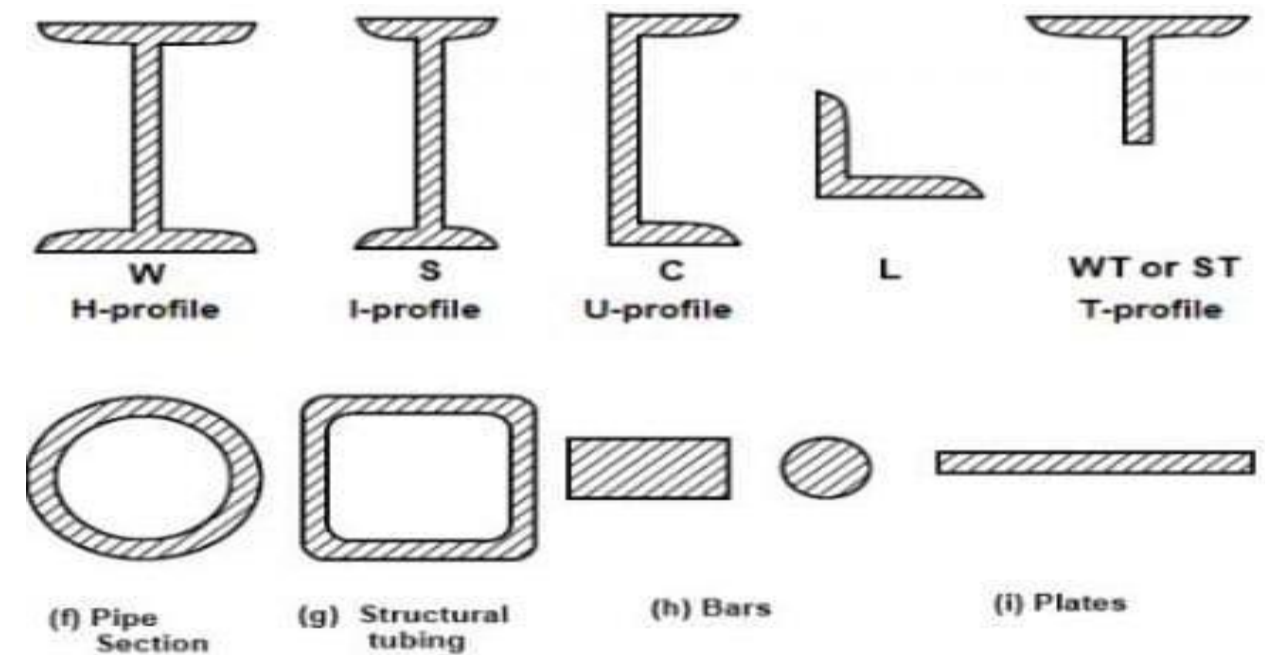


Fig. 2.12. T-beam.



L-SECTION

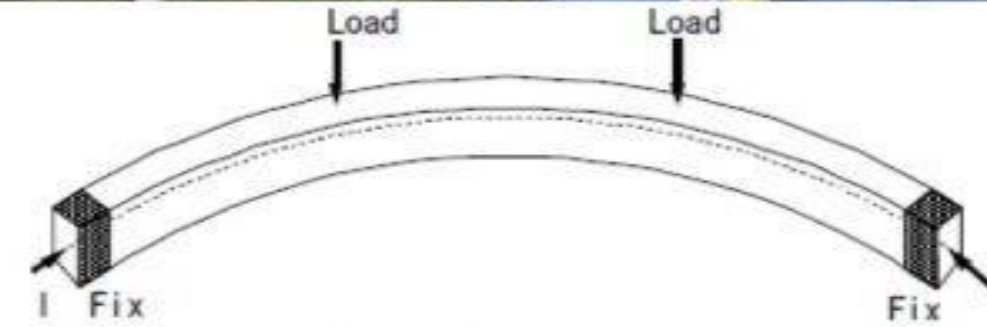
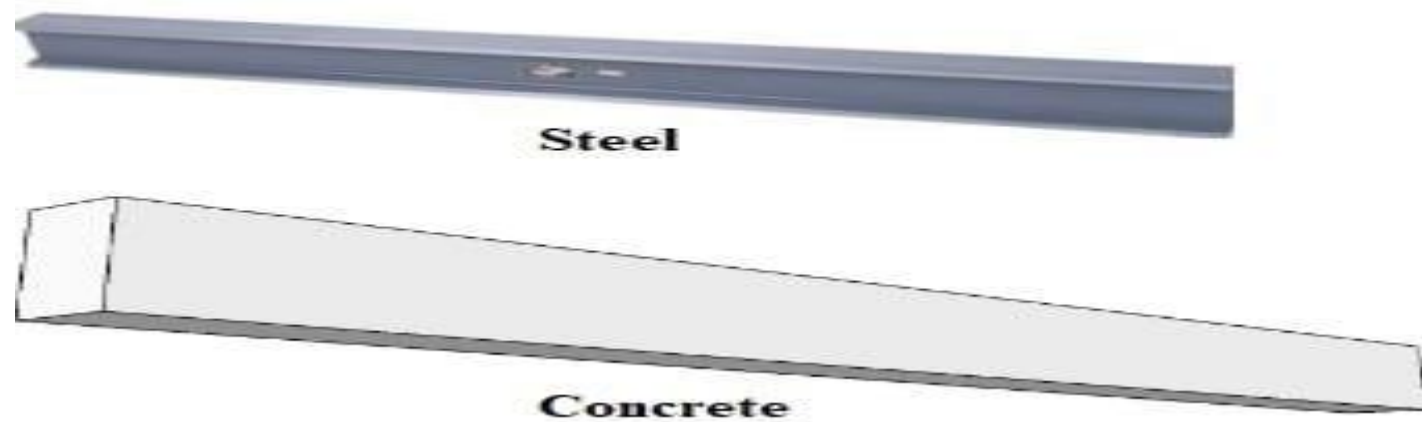




Classification of Beam-Based Geometry



- ❖ Straight beam
- ❖ Curved beam
- ❖ Tapered beam





QUESTION TIME ...



5F on H means

The given letter equation 5F on H means that 5 Fingers on a Hand.

11 P in a CT

The given letter equation implies that 11 P in a CT means 11 Players in a Cricket Team.

