



# **SNS COLLEGE OF TECHNOLOGY**

**Coimbatore-35  
An Autonomous Institution**

Accredited by NBA – AICTE and Accredited by NAAC – UGC with 'A++' Grade  
Approved by AICTE, New Delhi & Affiliated to Anna University, Chennai

## **DEPARTMENT OF AUTOMOBILE ENGINEERING**

### **AUTOMOTIVE SAFETY & INFOTRONICS**

#### **UNIT V – INFOTRONICS FOR AUTOMOBILES**

##### **TOPIC 5 & 6: ADAPTIVE CRUISE CONTROL**





# PRESENTATION OUTLINE

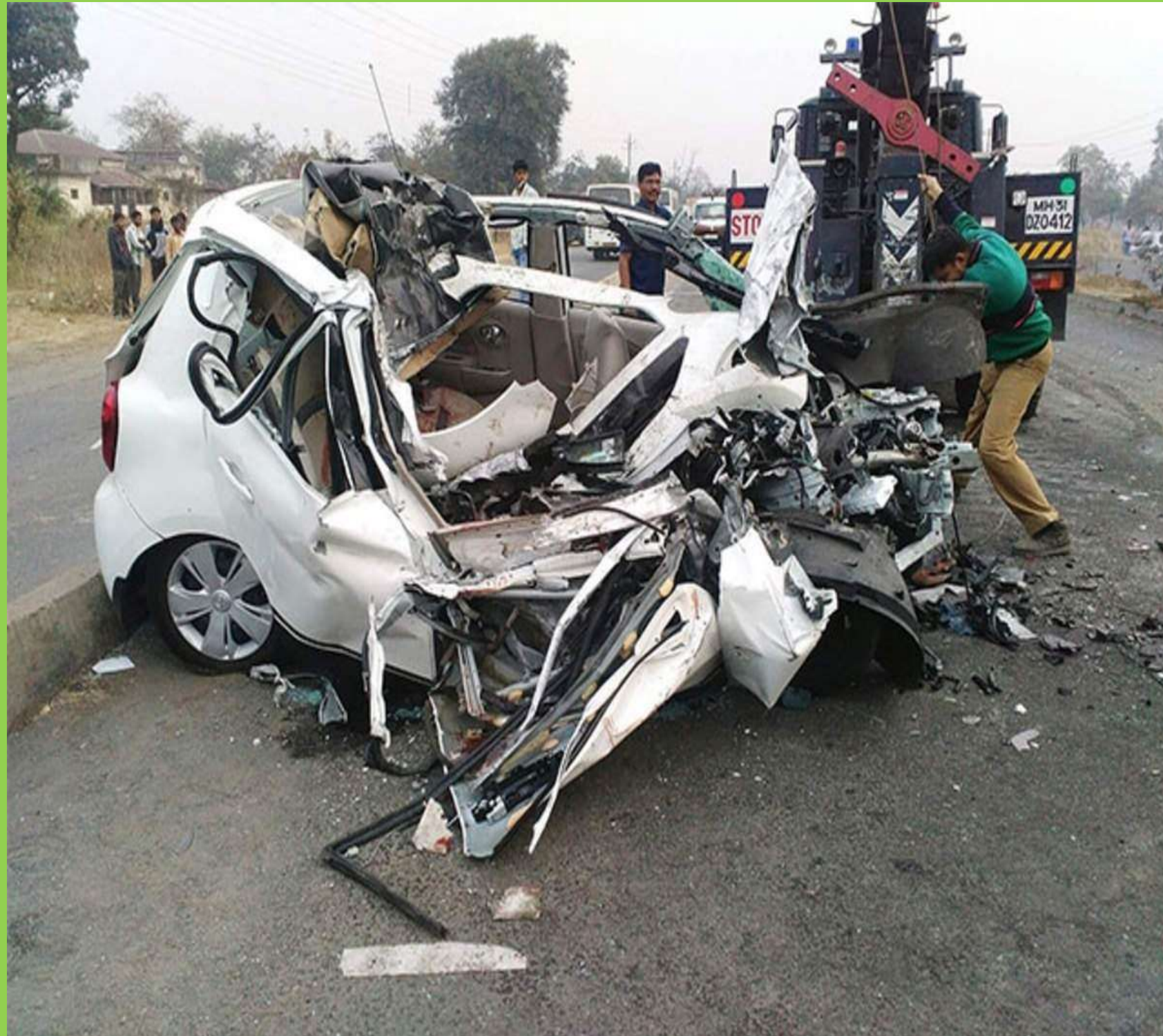


- Cruise Control
- History of Cruise Control
- Advantages of Cruise Control
- Limitations





# INTRODUCTION



- According to W.H.O one person killed every 25 seconds in road accident
- The average rate of India was 16.6 per 100000 peoples
- Engineers have been chipping away at this staggering numbers for a long time
- Many innovation like airbags, seat belt, body structures etc.



# CRUISE CONTROL



- Automatically controls the speed of an automobiles by using servomechanism
- Driver sets the speed and system will take over the throttle of the car to maintain the speed
- Also known as a speed stator tempo mat



# HISTORY OF CRUISE CONTROL



- 1948 – Ralph Teetor
- 1950 - Speed control device for resisting operation of the accelerator
- 1990 – Advanced digital technology



# WORKING



# ADVANTAGES



- It is useful for long drives
- Reduces driver fatigue
- Avoid Speeding



# LIMITATIONS



- Not useful in city driving, slippery road
- Not useful in hill stations





# SMART CRUISE CONTROL



# REFERENCES



- <https://www.hyundai.news/eu/stories/the-evolution-of-cruise-control/>

*Thank you*