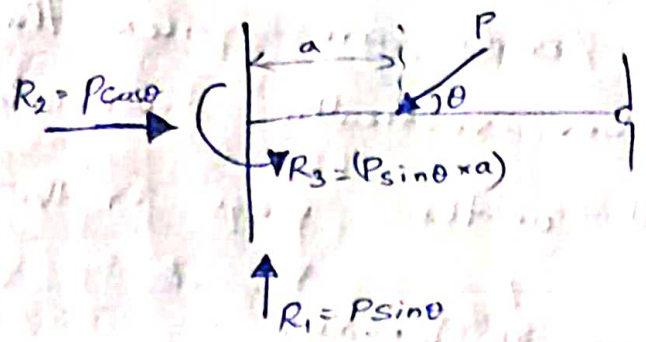
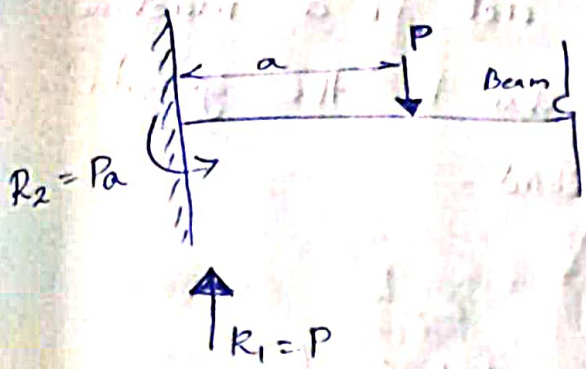


Fixed Support:



- (a) In case of Roller support as present only reactions perpendicular to the horizontal will be present
- (b) In case of hinged support and only vertical load is present then only vertical reaction will be there
- (c) In case of hinged support and inclined load, the horizontal component of vertical components constitutes reactions at support
- (d) In case of fixed support and vertical load only vertical reaction & moment
- (e) In case of fixed support & inclined load both horizontal & vertical reactions along with moment

S.No.	Types of Supports	Representation	Reaction Force	Resisting Loads
1.	Roller support		Vertical	Vertical loads
2.	Pinned (or) Hinged support		Horizontal & Vertical	Vertical loads & Horizontal loads
3.	Fixed support		Horizontal, Vertical & Moments	All types of Loads horizontal, vertical & moments
4.	Simple support		Vertical	Vertical loads