

**An Autonomous Institution**

Accredited by NBA – AICTE and Accredited by NAAC – UGC with ‘A+’ Grade  
Approved by AICTE, New Delhi & Affiliated to Anna University, Chennai

**DEPARTMENT OF INFORMATION TECHNOLOGY**

**PROBLEM SOLVING AND C PROGRAMMING**

**I YEAR - I SEM**

**UNIT 1 – Introduction to Problem Solving Techniques**

**TOPIC 3 – COMPUTER SOFTWARE**

...s that tell the computer how to process data into the form you want  
...nd programs are interchangeable.

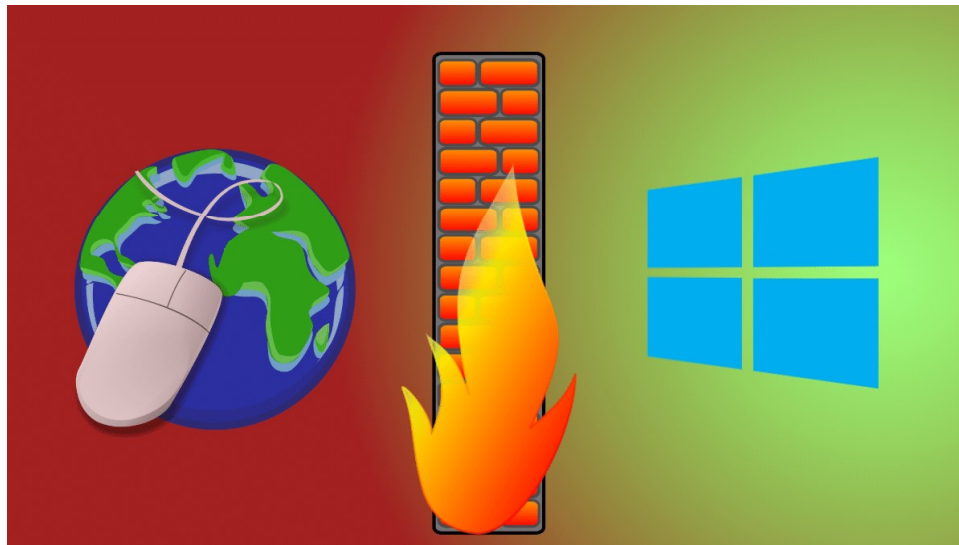
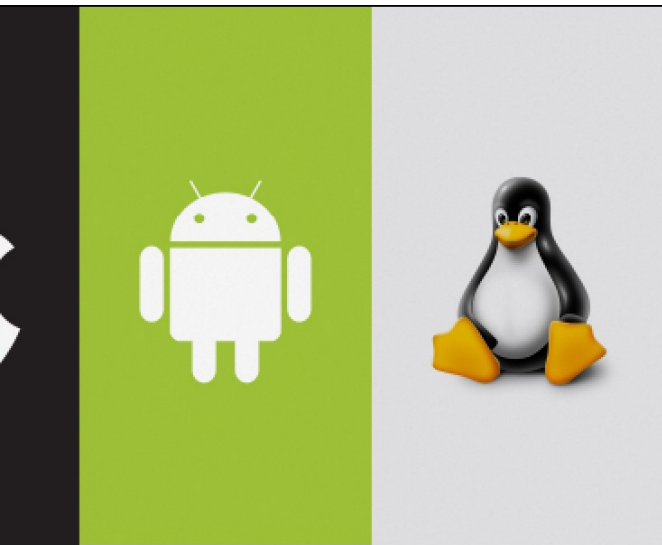
... types:

Software

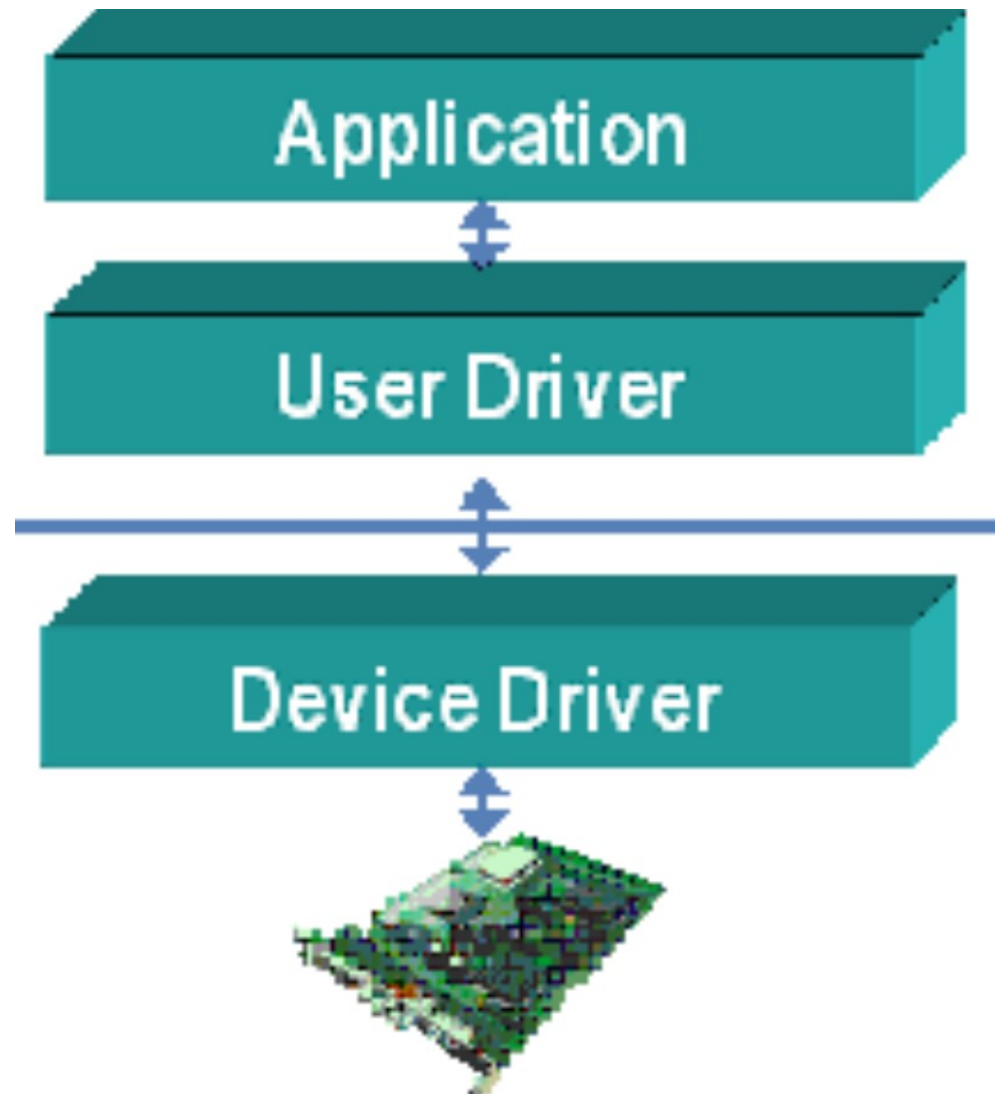
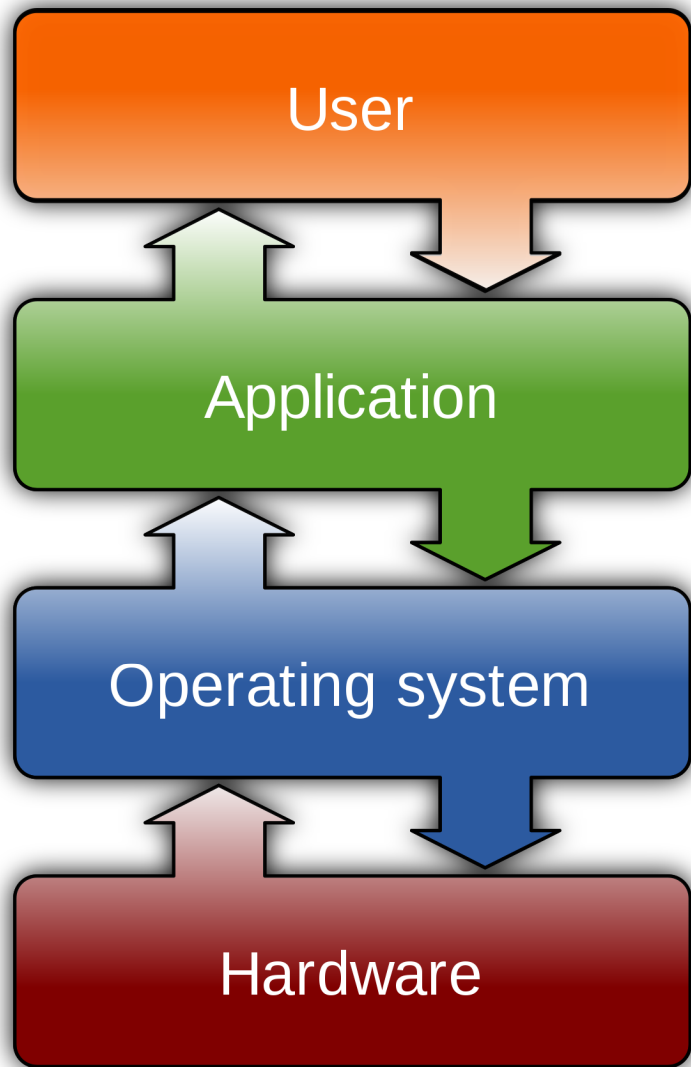
Application Software



ware enables the application software to interact with the computer.  
Systems are programs that coordinate computer resources, provide  
users and the computer; and run applications.  
perform specific tasks related to managing computer resources.  
Drivers are specialized programs designed to allow particular input or  
communicate with the rest of the computer system.



resources (memory, processing, storage, and devices like printer).  
user interface  
applications

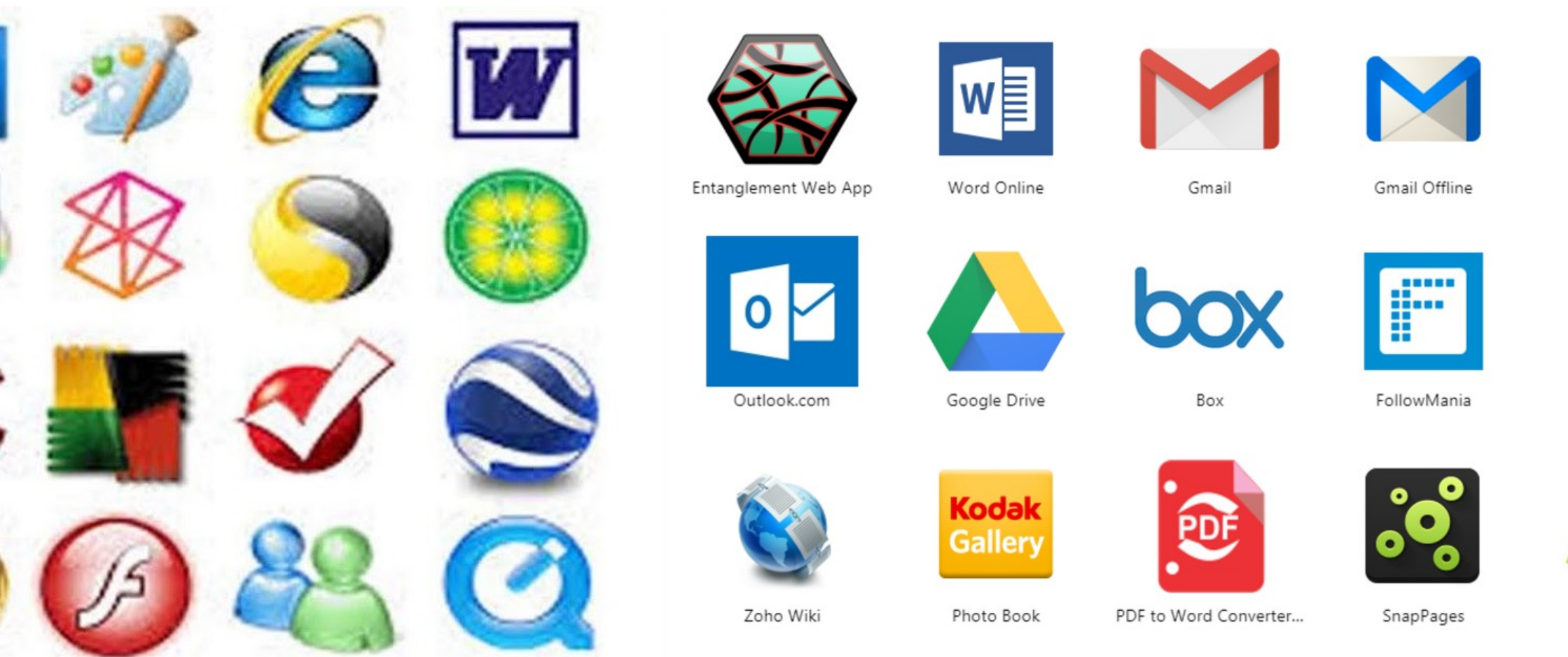


Software provides the real functionality of a computer.

the computer to do specific types of work.

ations, widely used in all career areas.

Applications, more narrowly focused on specific disciplines and oc



# ing System

e first widely installed operating system for personal computers.

riven

mmmands

ND is the name of a special program that makes your computer can

```
B58  
  
space  
n files  
stories  
r files  
on disk  
  
location unit  
units on disk  
tion units on disk  
  
ry  
  
sing SCANDISK. SCANDISK can reliably detect  
disk problems. For more information,  
mmmand prompt.
```

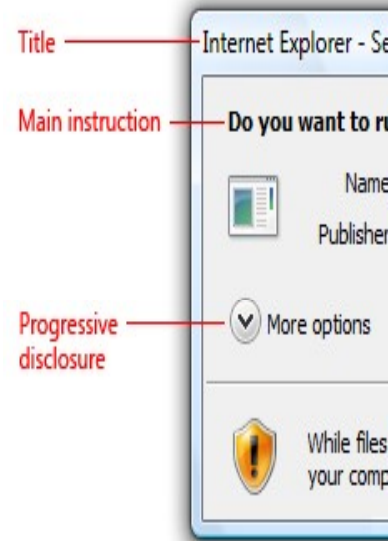
```
Administrator: C:\Windows\System32\cmd.exe - diskpart  
  
-----  
Disk 0      Online           298 GB         0 B  
Disk 1      No Media         0 B           0 B  
Disk 2      Online           3819 MB        0 B  
-----  
DISKPART> select disk 2  
Disk 2 is now the selected disk.  
DISKPART> clean  
DiskPart succeeded in cleaning the disk.  
DISKPART> create partition primary  
DiskPart succeeded in creating the specified partition.  
DISKPART> format fs=ntfs  
2 percent completed
```

er Interface (GUI).

I, users can interact directly with the operating system.

indows

s, Dialog boxes.



- Menu name
- Menu bar
- Selected menu item
- Separator
- Menu item
- Chevron

ly a collection of information that you store on a disk or diskette.

a unique name

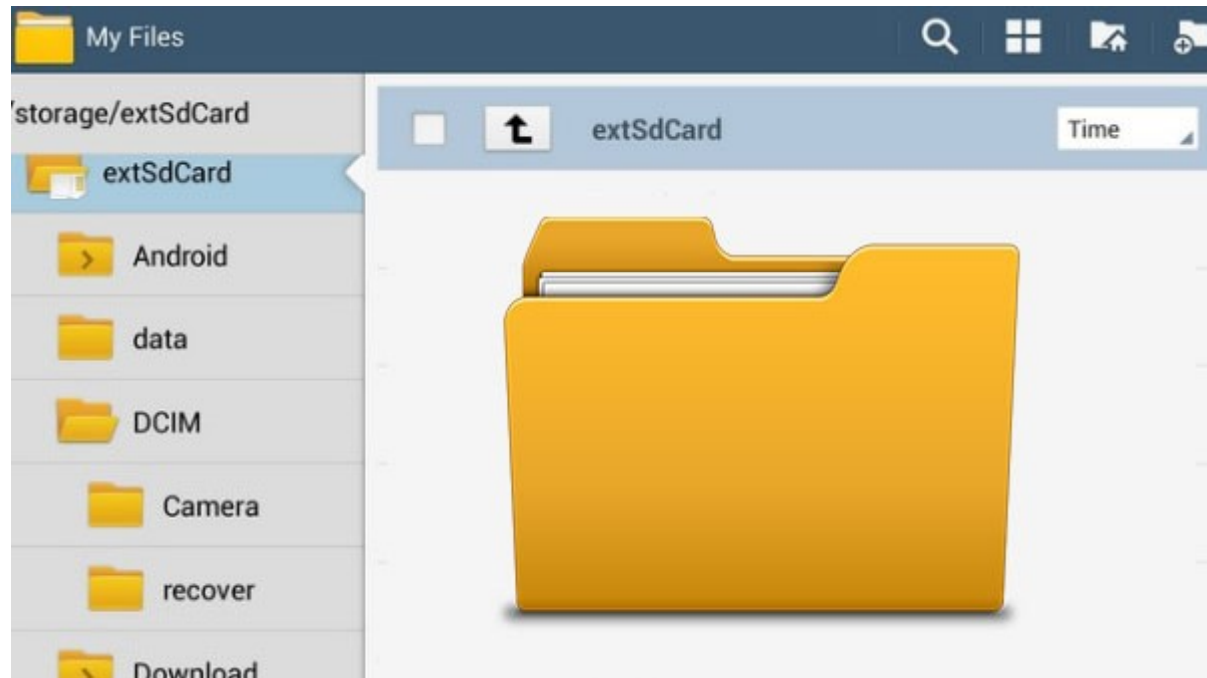
the “filename” and “extension” separated by a period.

sion to make filenames more descriptive.

– word documents

– excel documents

– powerpoint documents

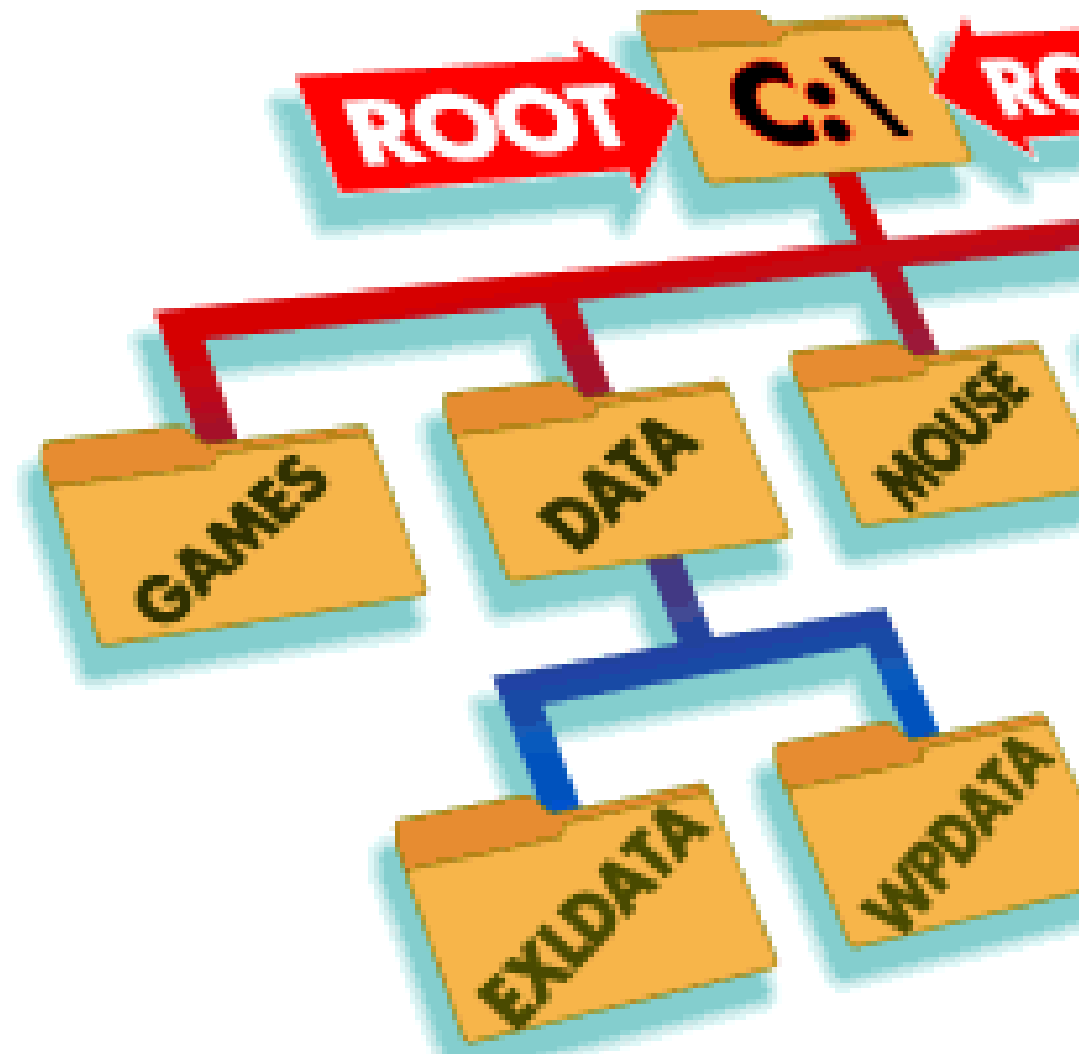
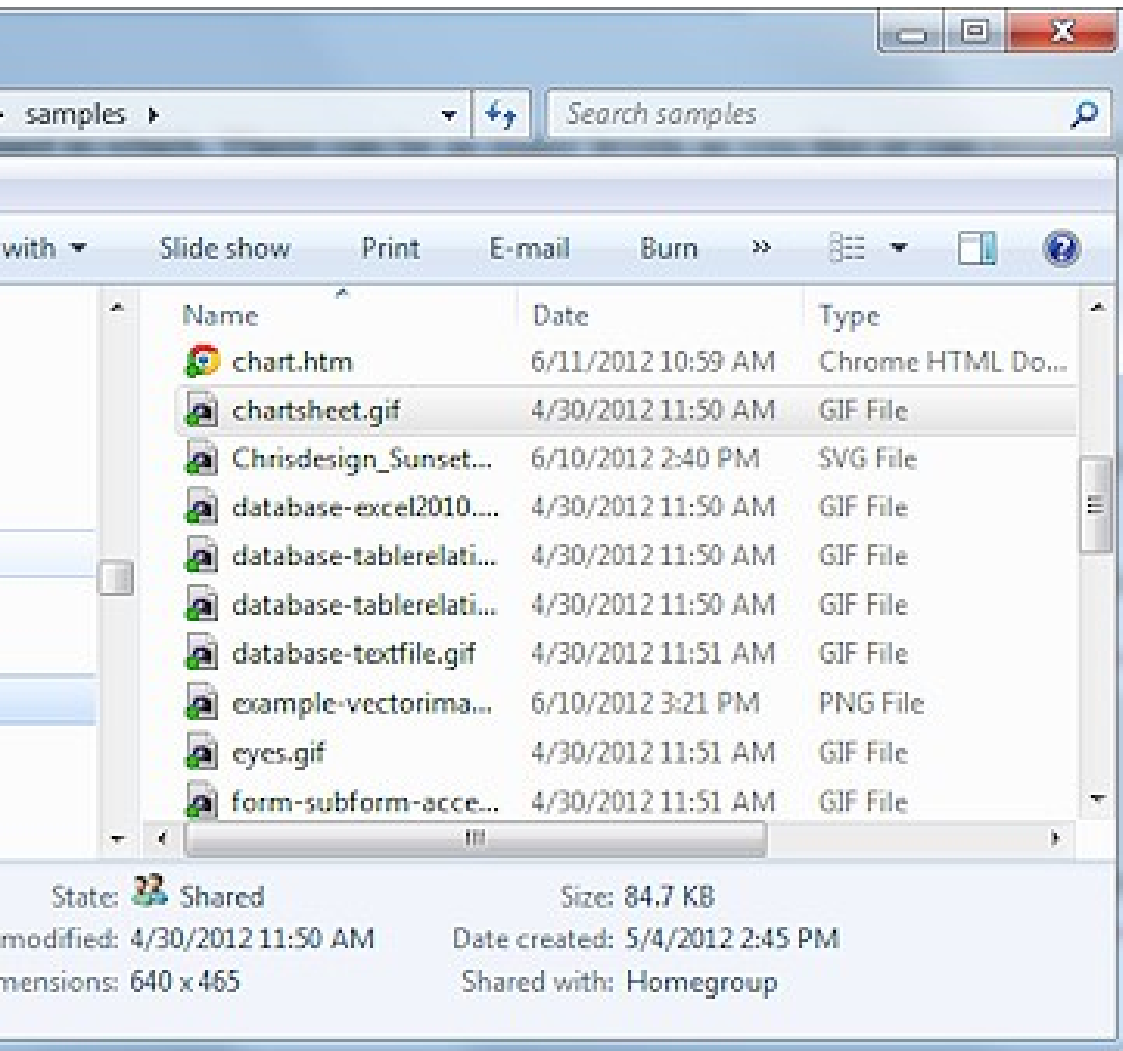




# Organizing the files on the computer Hard Disk

T – one basic directory

Subdirectories



er network is a system for communicating between two or more co  
devices

example of a computer network is the internet, which allows milli  
mation

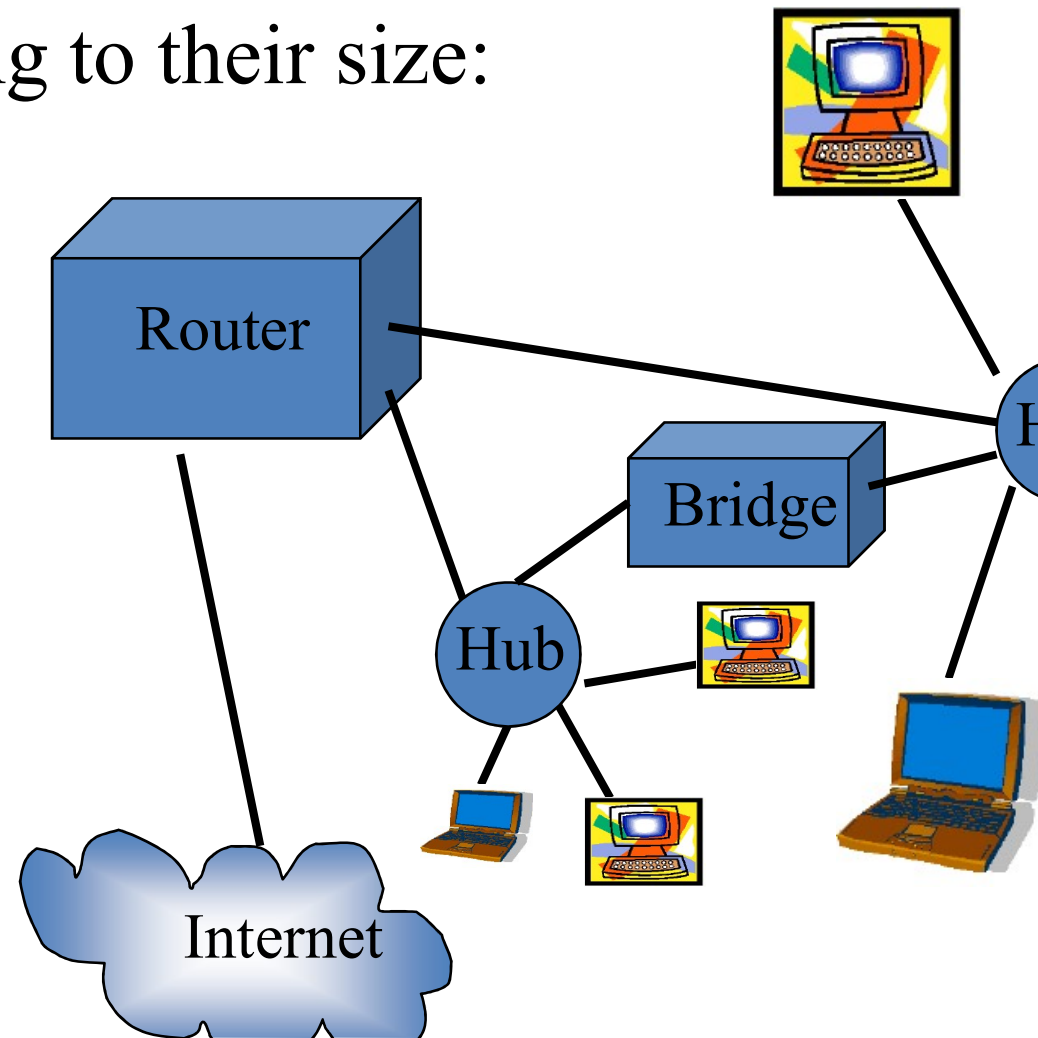
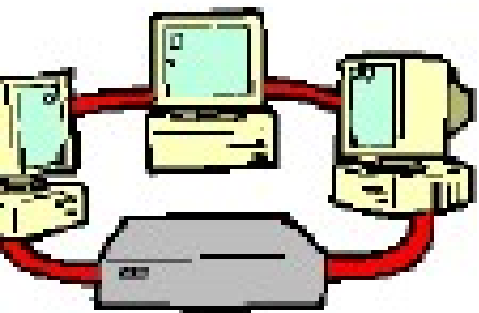
networks can be classified according to their size:

nal area network (PAN)

area network (LAN)

opolitan area network (MAN)

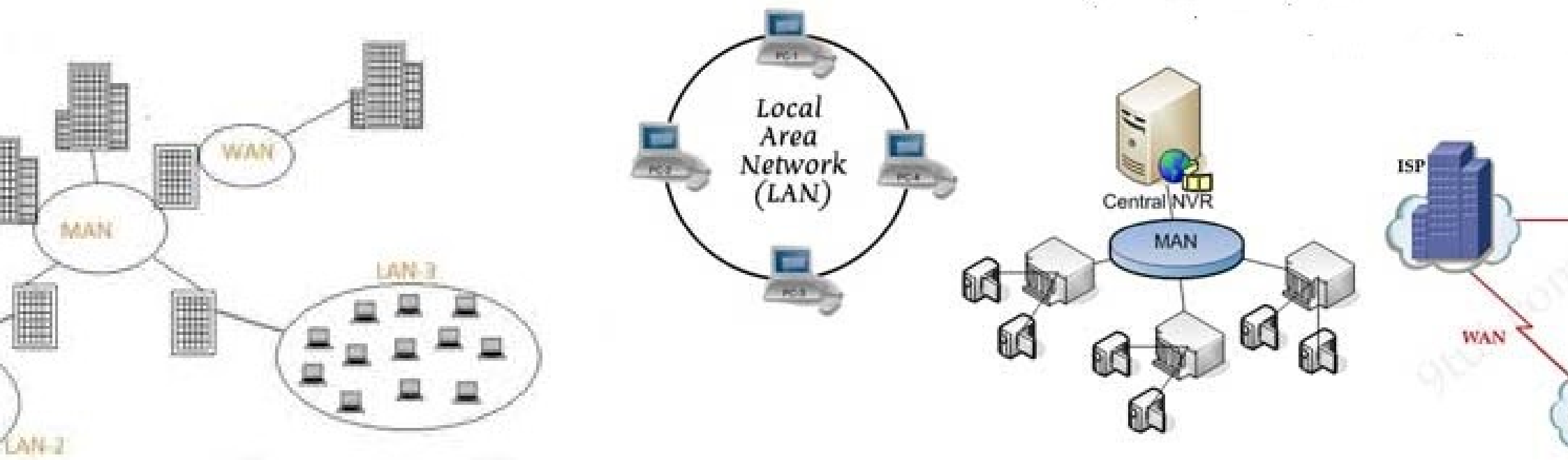
area network (WAN)



A small geographical Area (Room, Building or a Campus) is called (Local Area Network)

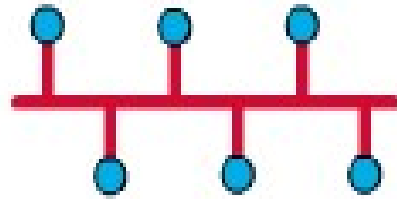
A network in a City is call MAN (Metropolitan Area Network)

A network spread geographically (Country or across Globe) is called WAN (Wide Area Network)

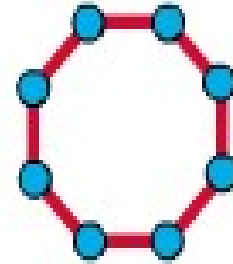


Network topology defines the way in which computers, printers, and other

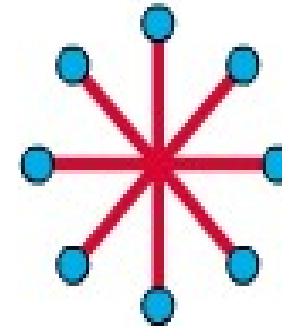
topology describes the layout of the wire and devices as well as the  
transmissions



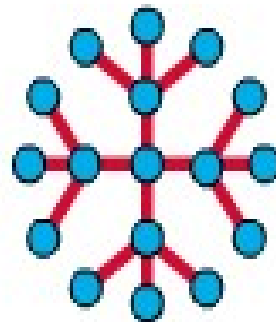
**Bus Topology**



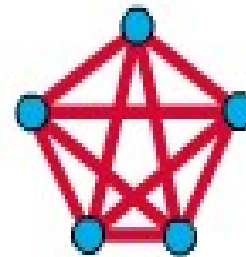
**Ring Topology**



**Star Topology**



**Extended Star  
Topology**



**Mesh  
Topology**