



# SNS COLLEGE OF TECHNOLOGY

(An Autonomous Institution)

COIMBATORE-35

Accredited by NBA-AICTE and Accredited by NAAC – UGC with A++ Grade

Approved by AICTE, New Delhi & Affiliated to Anna University, Chennai



## ARTIFICIAL INTELLIGENCE FOR ELECTRICAL ENGINEERING

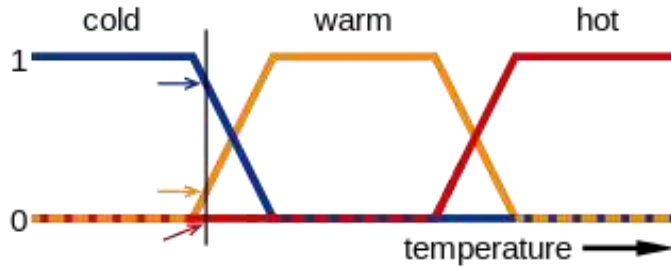
### UNIT III: FUZZY LOGIC

### TOPIC: FUZZY INFERENCE - PROPERTIES OF FUZZY SETS





# TOPIC OUTLINE



What is fuzzy Inference system in AI ?

Architecture of fuzzy Inference

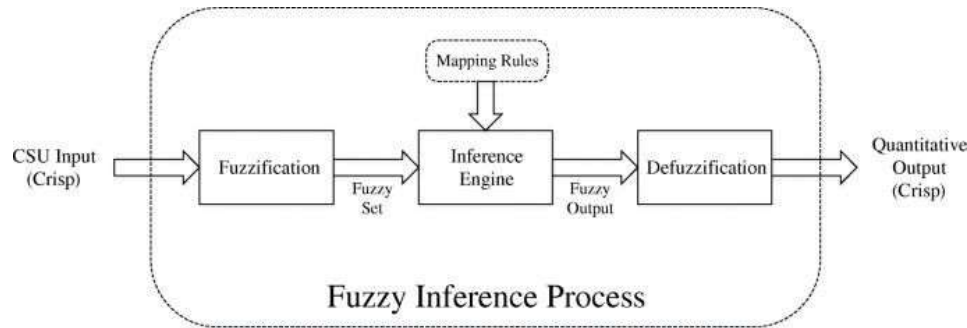
What is fuzzy inference properties

Advantage of  
fuzzy Inference in AI?





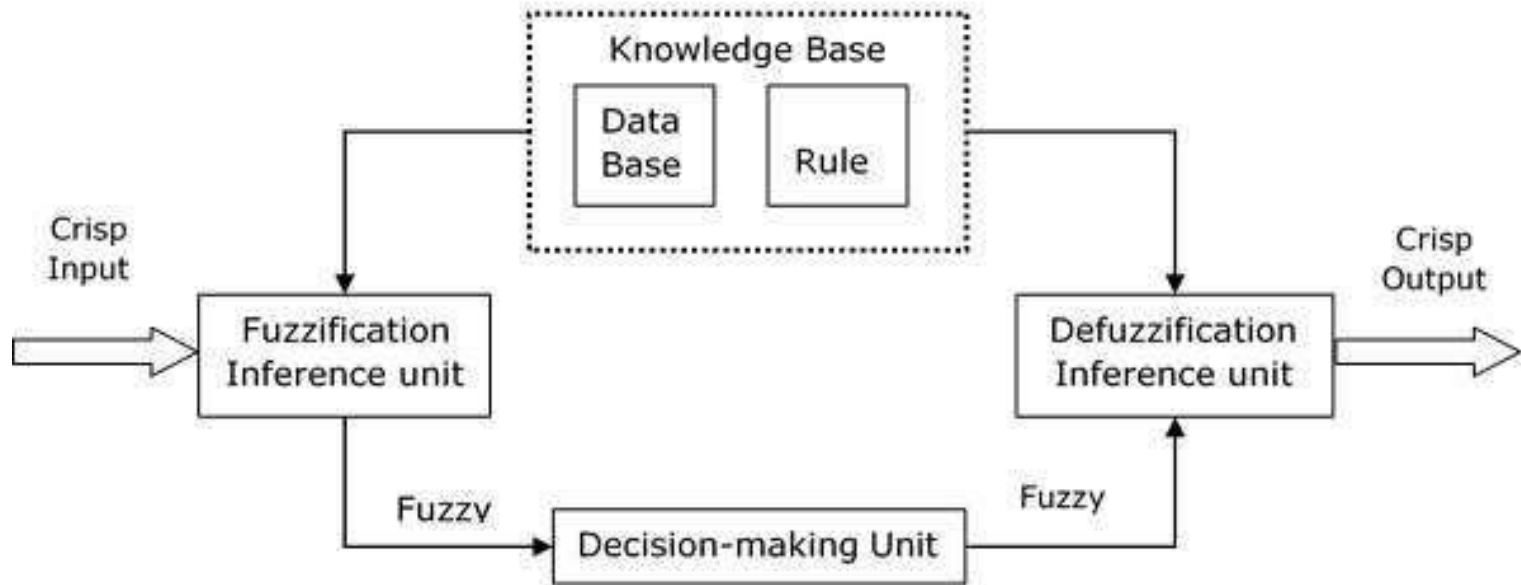
# What is Fuzzy Inference



Fuzzy inference is the process of formulating the mapping from a given input to an output using fuzzy logic. The mapping then provides a basis from which decisions can be made, or patterns discerned.



# Architecture Of Fuzzy Inference





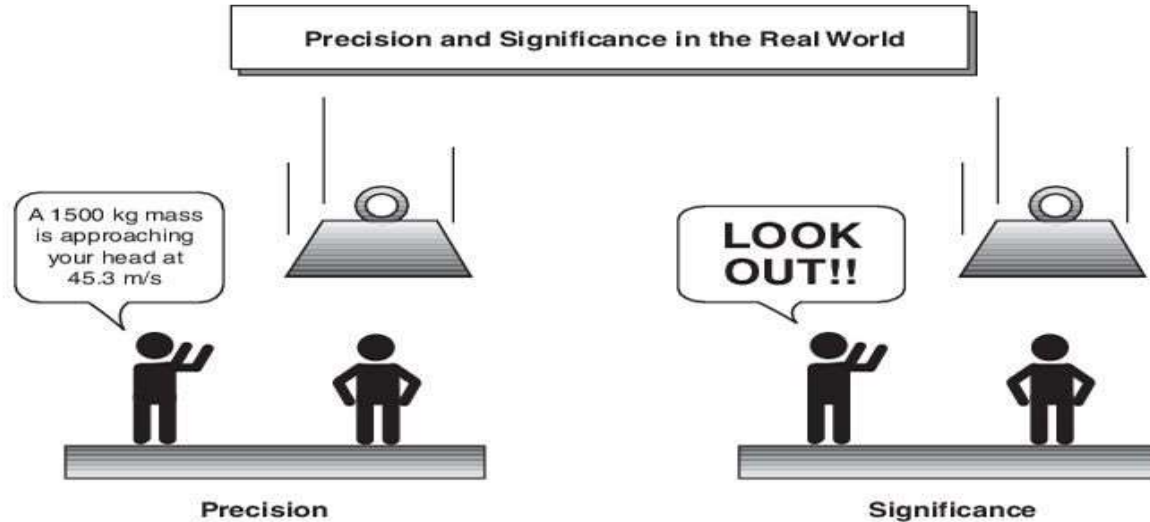
# Fuzzy Inference Properties

- The yield from FIS is consistently a fuzzy set irrespective of its input which can be fuzzy or crisp.
- It is necessary to have a fuzzy output when it is used as a controller.
- A defuzzification unit would accompany the FIS to convert the fuzzy variable into a crisp variable.





# Fuzzy Inference in Real world



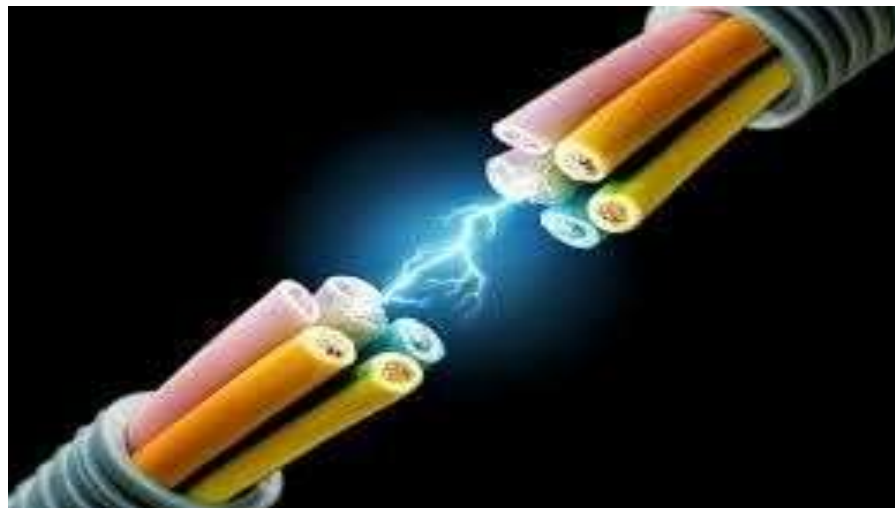


## Advantages of Fuzzy Inference System

- Well-suited to human inputs
- More interpretable and rule-based
- Has widespread acceptance
- Functions well with linear techniques, like PID control
- Functions with optimization and adaptive techniques
- Guarantees output surface continuity
- Well-suited to mathematical analysis.



# RECAP....



# ...THANK YOU