



# **SNS COLLEGE OF TECHNOLOGY**

**Coimbatore-35**  
**An Autonomous Institution**

Accredited by NBA – AICTE and Accredited by NAAC – UGC with 'A+' Grade  
Approved by AICTE, New Delhi & Affiliated to Anna University, Chennai



## **DEPARTMENT OF INFORMATION TECHNOLOGY**

### **MOBILE APPLICATION DEVELOPMENT**

III YEAR - VI SEM

#### **UNIT 1 – GETTING STARTED WITH MOBILITY**

##### **Topic 2 – Mobility Landscape**



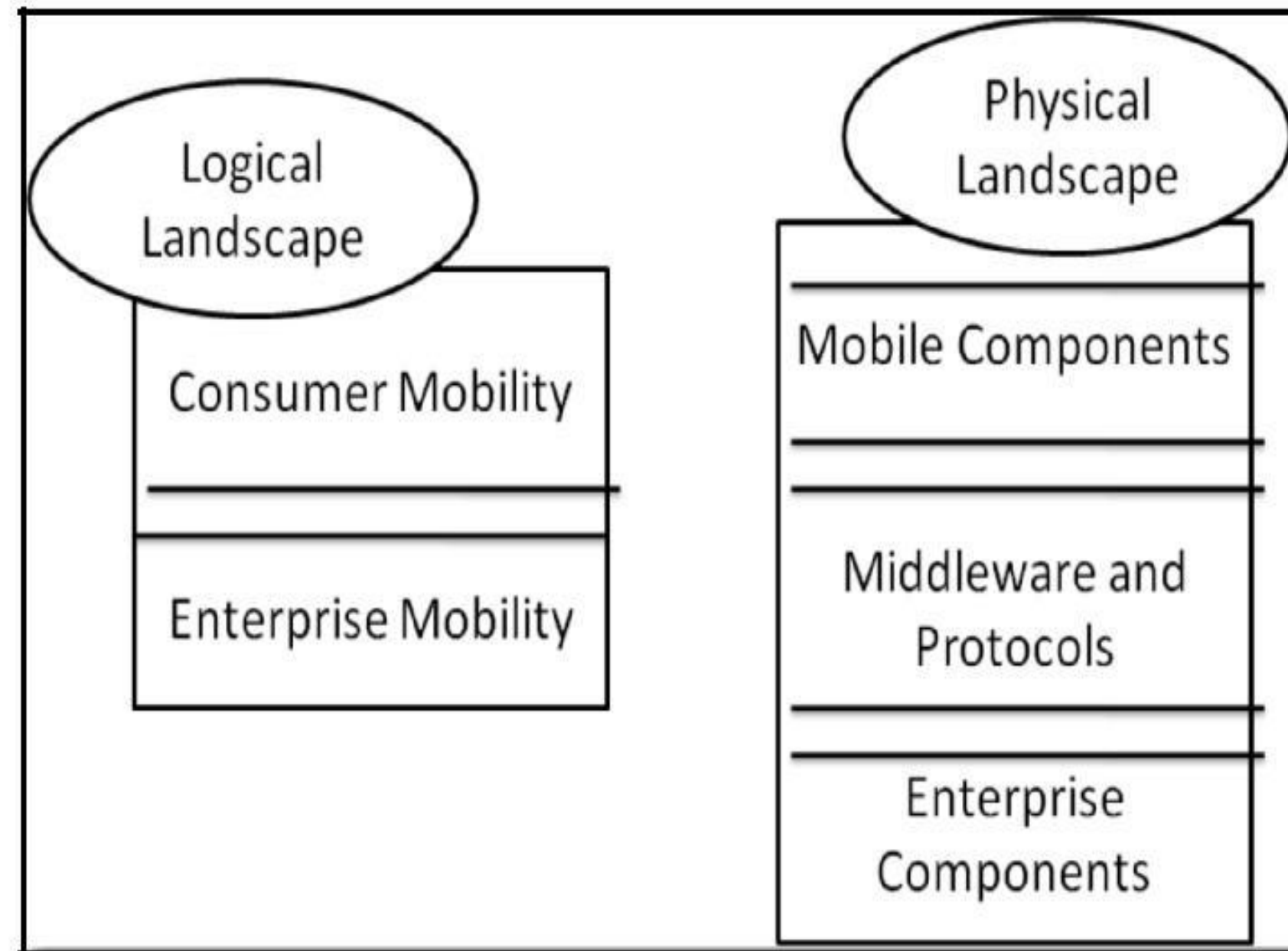
# Mobility Landscape



Mobility Panorama:

It is classified into

- (1) Logical Landscape
- (2) Physical Landscape





# Mobility Landscape



## Logical Landscape:

It describes the rationale behind mobility for different stakeholders.

## Consumer Mobility:

- Focused toward the end user.
  
- Comprise mobility solutions such as social networking, games, shopping, bidding & utilities.



# Mobile Landscape



## Enterprise Mobility:

- Focused toward various stakeholders of an organization such as vendors, partners, suppliers, workforce and their end consumers.
- Mobility is enabling enterprises to increase productivity of their workforce.

## Physical Landscape:

- It portrays the infrastructure that enables mobility.



# Mobility Landscape



## Logical landscape of mobility

### Consumer mobility

- Gaming & Entertainment
- Consumer banking
- Shopping and bidding
- Social network
- Browsing & searching
- Location based services
- And many more

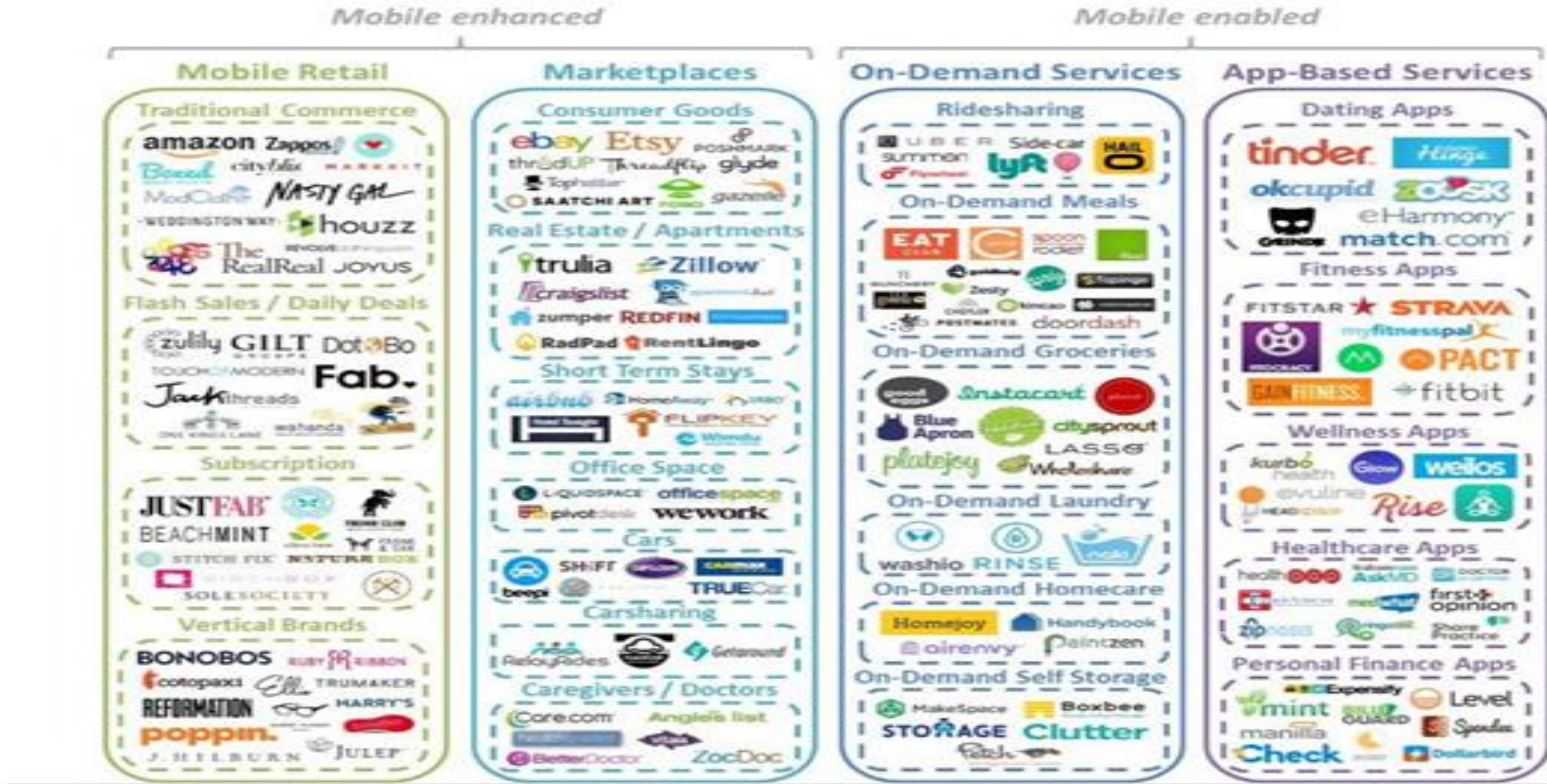
### Enterprise mobility

- Retail: In store offers, Mobile brochure.
- Energy and utilities: Energy management, Smart metering.
- Banking & finance: Mobile wallets, NFC payment.
- Manufacturing: Asset/inventory tracking, Real time monitoring.
- Telecom: Field service automation, Content digitizing
- Healthcare: Remote patient monitoring





# Mobility Landscape



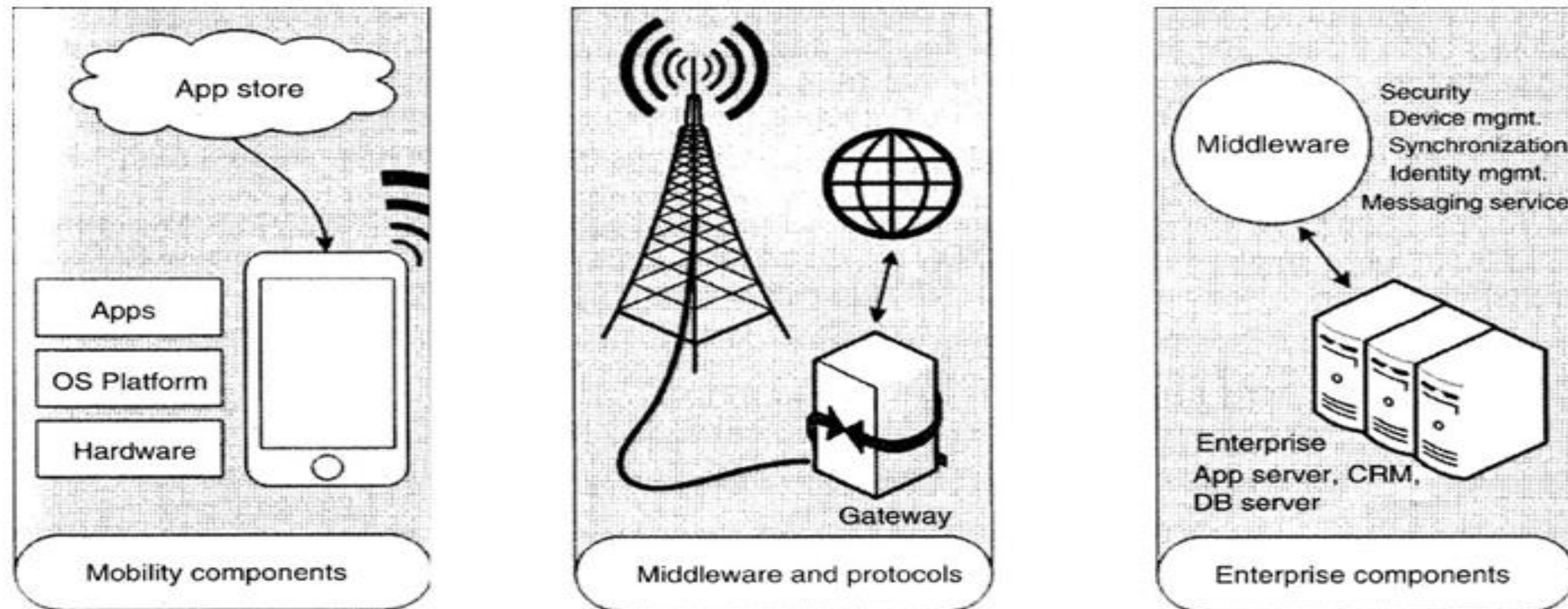




# Mobility Landscape



## Physical landscape of mobility





# Mobility Landscape



## Mobile Components:

- Key mobility components are mobile devices, mobile platforms, and mobile app stores.
- Mobile devices are the centre piece of mobility, and available in different shapes and sizes such as smart phones, tablets, phablets and smart watches.
- Mobile platforms such as Android and Apple iOS, are software stacks that power mobile devices.
- Mobile app stores are online market places of mobile apps. Ex. Google Play, App Store





# Mobility Landscape



## Enterprise Components:

- Comprises hosts of servers, such as database servers and application servers that cater to enterprise portion of mobility solutions.
- Also comprise enterprise solutions that cater to the requirements of data security
- data synchronization between mobile devices and enterprise servers and identity management



# Mobility Landscape



## Middleware and Protocols:

- It acts as glue between mobility and enterprise components.
- Access mechanisms such as Wi-Fi, Bluetooth, Code Division Multiple Access (CDMA), General Packet Radio Service (GPRS), and GSM are some key components of this layer that allow mobile devices to communicate.
- Other key components are gateways such as WAP and SMS gateways that enable interaction between mobile devices and the Internet.