



## Speed control of D.C Series Motor

### (1) Flux Control Method

1. Field diverter
2. Armature diverter
3. Tapped field control
4. Paralleling field coils

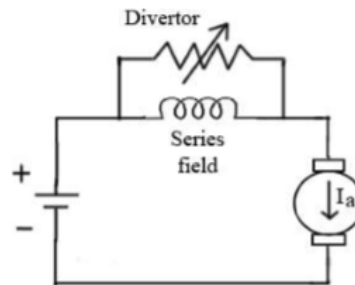


fig (a) Field Diverter

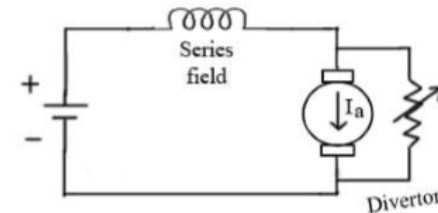


fig (b) Armature Diverter

### (2) Variable Resistance In Series With Armature

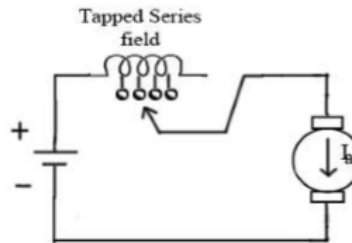


fig (c) Tapped field

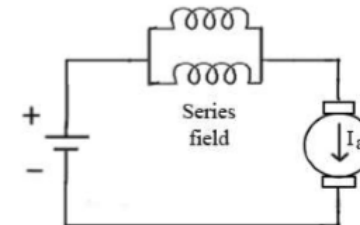


fig (d) Paralleling Field coils

### (3) Series-Parallel Control