

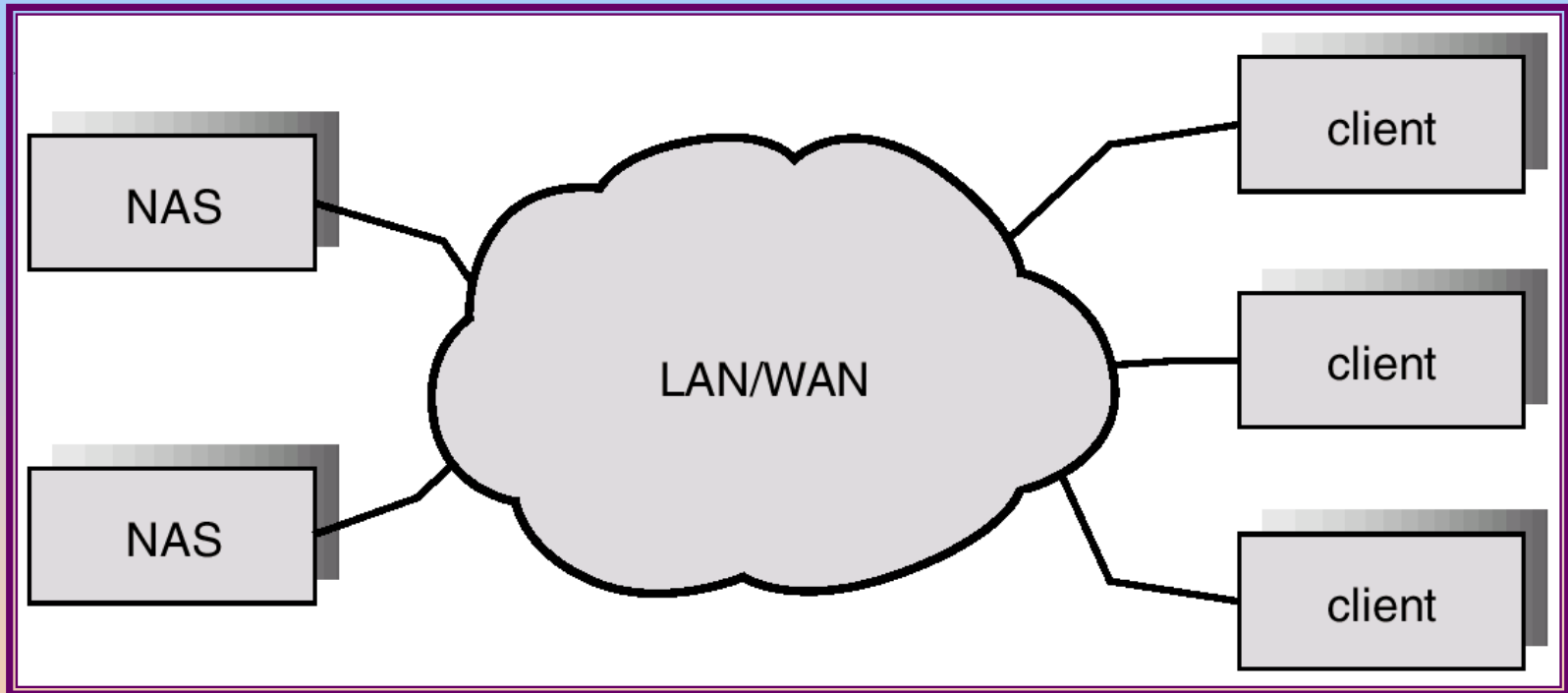
# Disk Attachment

□ Disks may be attached one of two ways:

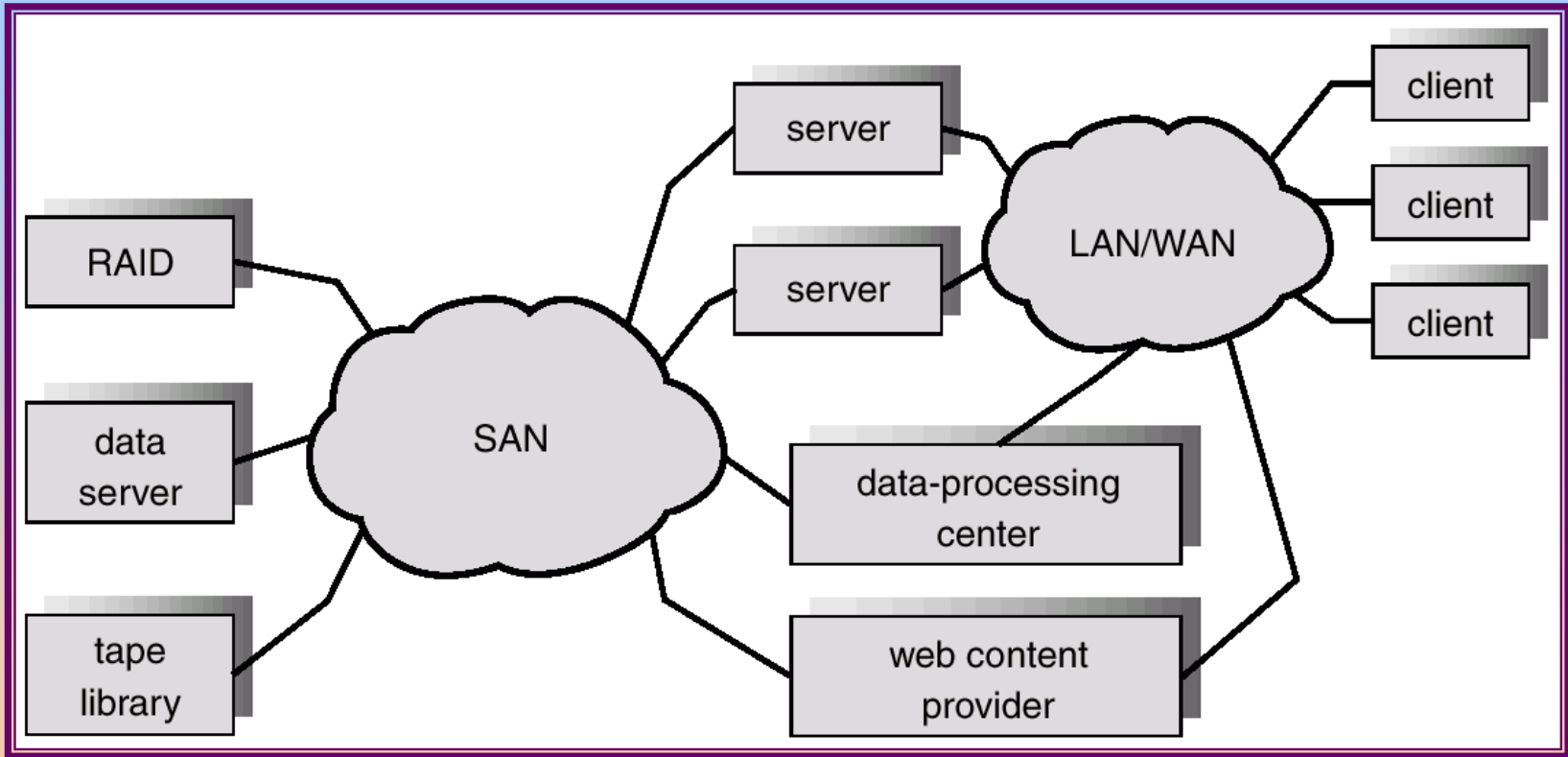
1. **Host attached** via an I/O port

2. **Network attached** via a network connection

# Network-Attached Storage



# Storage-Area Network



# Stable-Storage Implementation

- Write-ahead log scheme requires stable storage.
- To implement stable storage:
  - Replicate information on more than one nonvolatile storage media with independent failure modes.
  - Update information in a controlled manner to ensure that we can recover the stable data after any failure during data transfer or recovery.

# Tertiary Storage Devices

- ❑ Low cost is the defining characteristic of tertiary storage.
- ❑ Generally, tertiary storage is built using *removable media*
- ❑ Common examples of removable media are floppy disks and CD-ROMs; other types are available.



# Removable Disks

- Floppy disk — thin flexible disk coated with magnetic material, enclosed in a protective plastic case.
  - Most floppies hold about 1 MB; similar technology is used for removable disks that hold more than 1 GB.
  - Removable magnetic disks can be nearly as fast as hard disks, but they are at a greater risk of damage from exposure.

# Removable Disks (Cont.)

- A magneto-optic disk records data on a rigid platter coated with magnetic material.
  - Laser heat is used to amplify a large, weak magnetic field to record a bit.
  - Laser light is also used to read data (Kerr effect).
  - The magneto-optic head flies much farther from the disk surface than a magnetic disk head, and the magnetic material is covered with a protective layer of plastic or glass; resistant to head crashes.
  
- Optical disks do not use magnetism; they employ special materials that are altered by laser light.





# WORM Disks

- ❑ The data on read-write disks can be modified over and over.
- ❑ WORM (“Write Once, Read Many Times”) disks can be written only once.
- ❑ Thin aluminum film sandwiched between two glass or plastic platters.
- ❑ To write a bit, the drive uses a laser light to burn a small hole through the aluminum; information can be destroyed by not altered.
- ❑ Very durable and reliable.
- ❑ *Read Only* disks, such as CD-ROM and DVD, come from the factory with the data pre-recorded.

