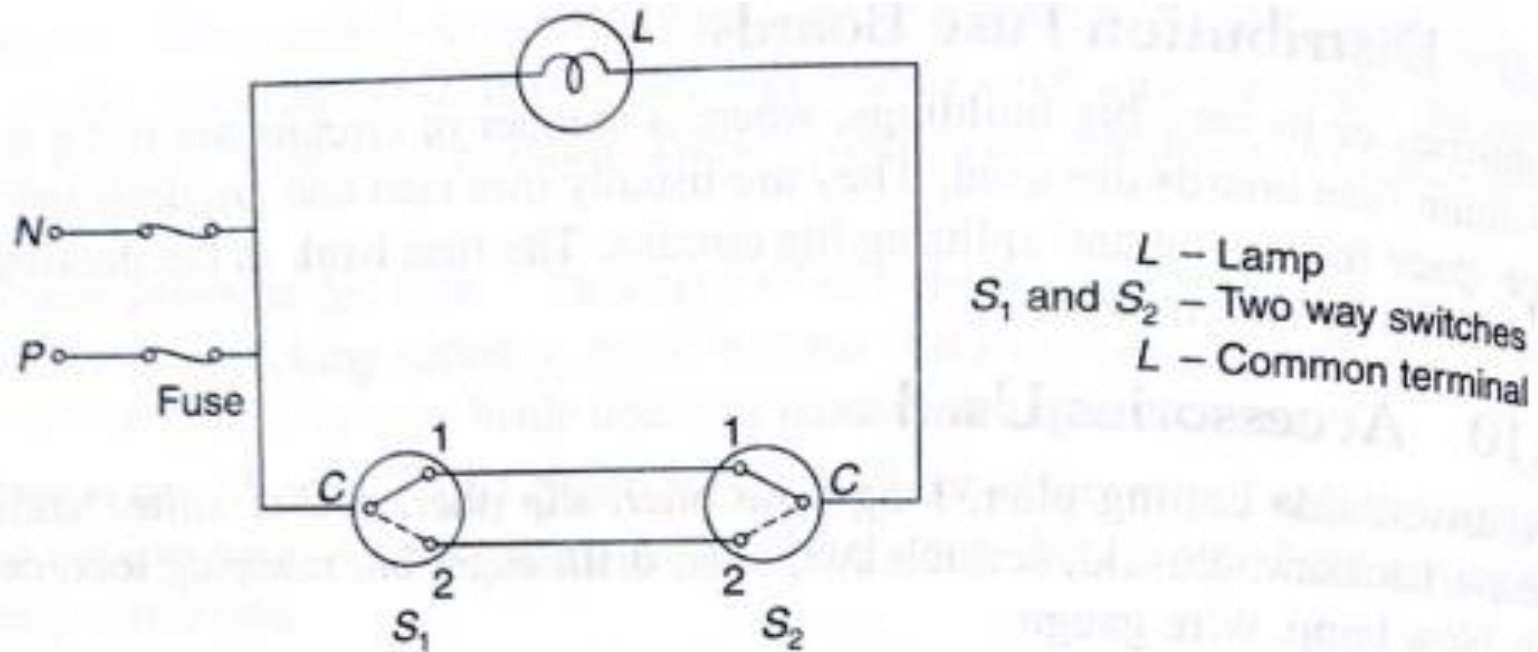




Residential Wiring



Stair Case Wiring



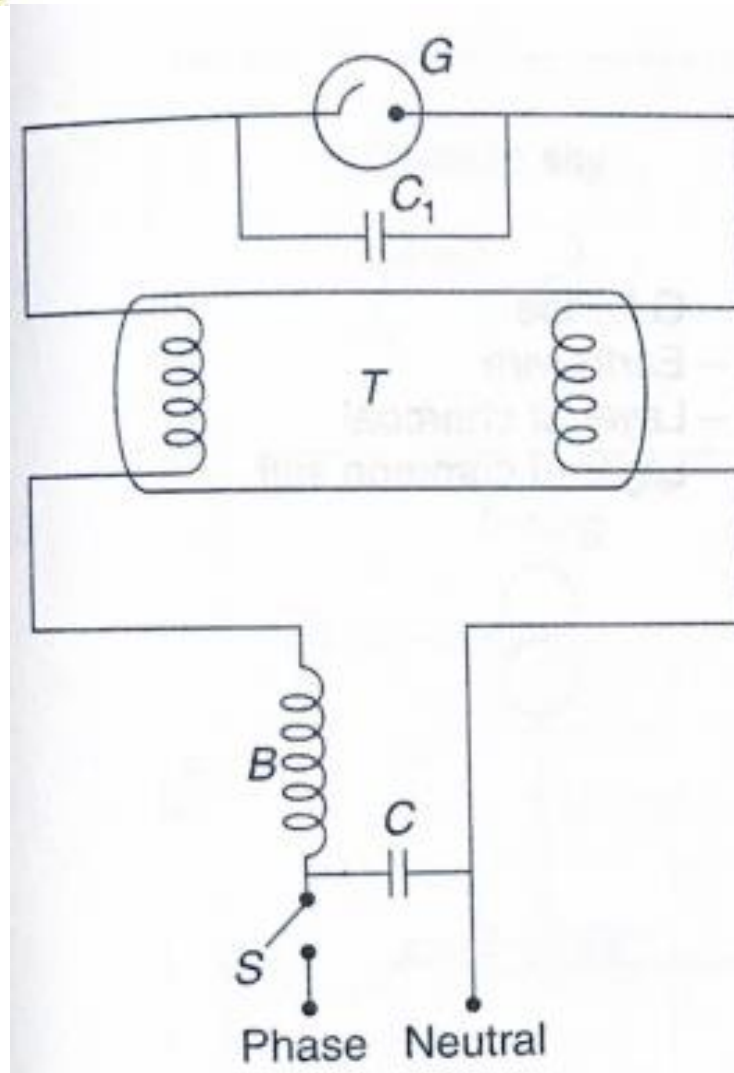


Stair Case Wiring



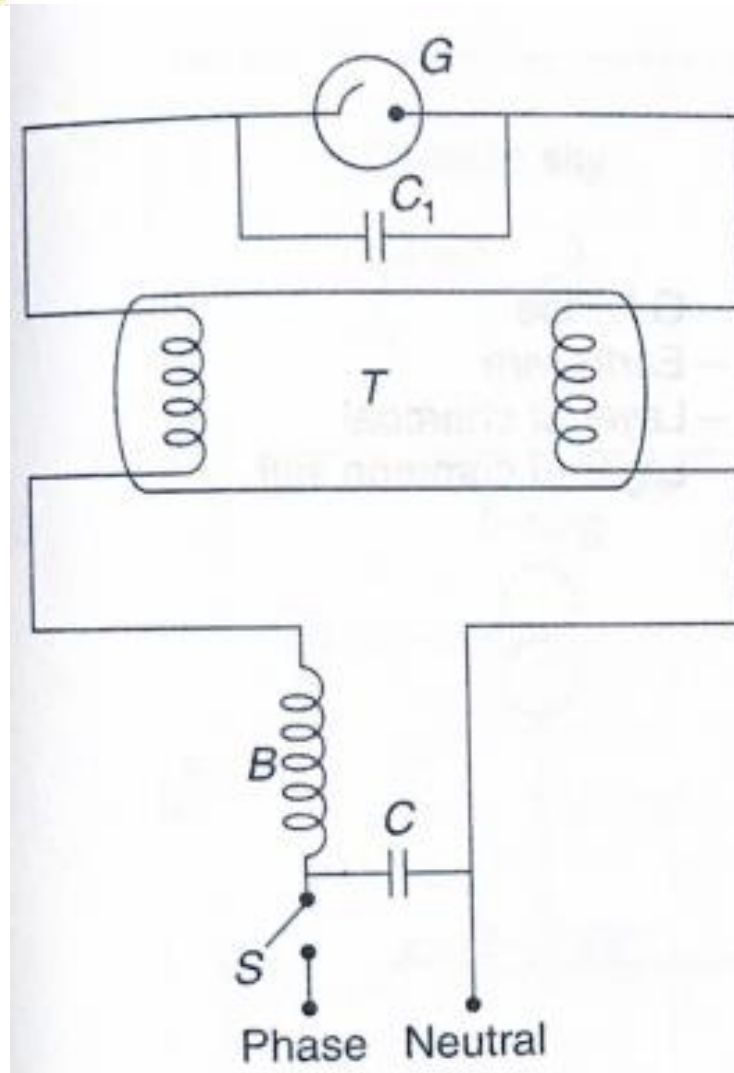
<i>Position of switch</i>	<i>Position of switch</i>	<i>Condition of lamp</i>
S_1	S_2	
1	1	ON
1	2	OFF
2	1	OFF
2	2	ON

Fluorescent Lamp Wiring



- T – Fluorescent tube
- G – Glow switch starter
- B – Ballast or choke
- S – Switch
- C – Capacitor for P.F. improvement
- C₁ – Capacitor to suppress radio interference

Fluorescent Lamp Wiring



- T – Fluorescent tube
- G – Glow switch starter
- B – Ballast or choke
- S – Switch
- C – Capacitor for P.F. improvement
- C₁ – Capacitor to suppress radio interference

Wiring Layout for Residential Building

