

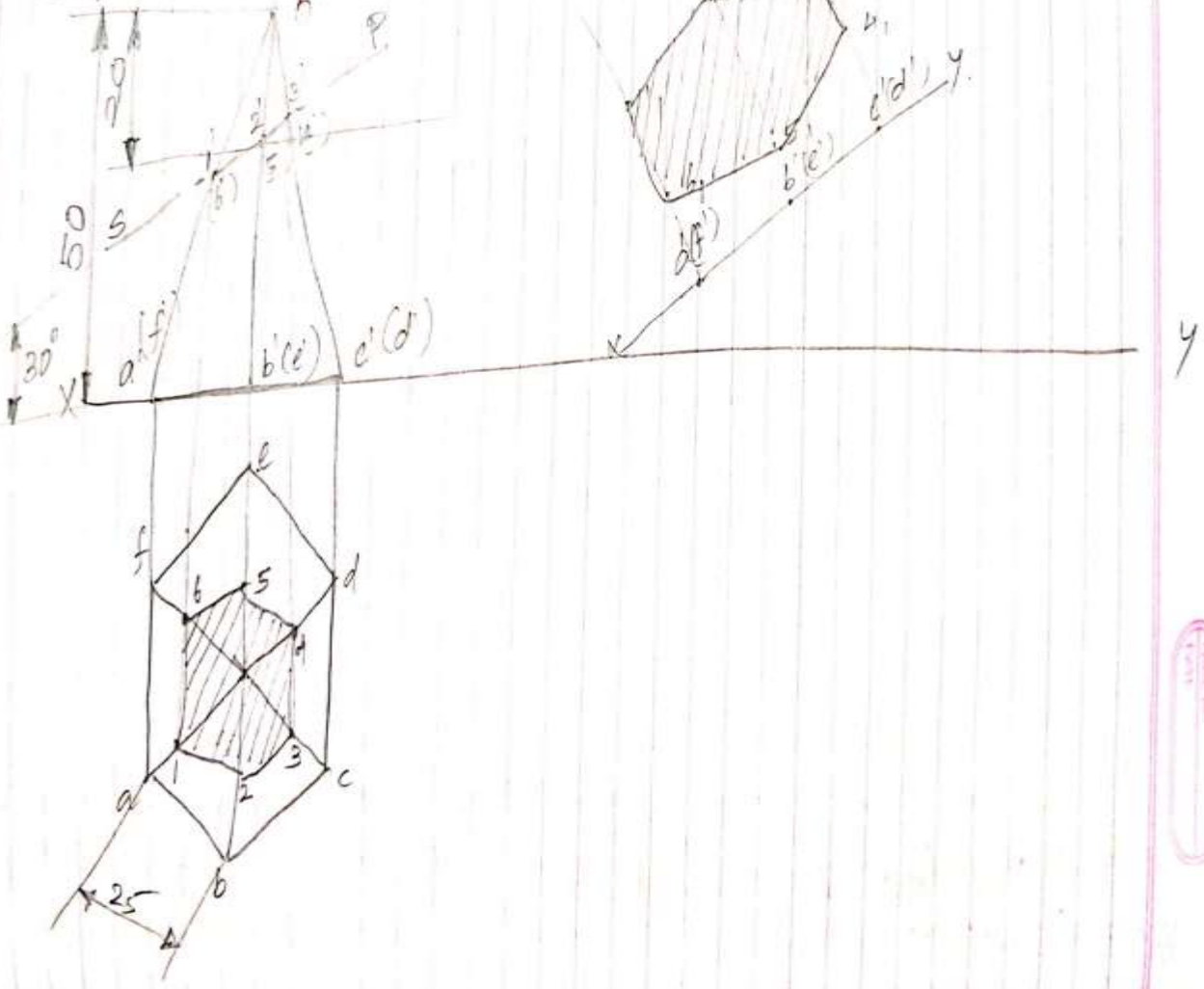


SNS COLLEGE OF TECHNOLOGY, COIMBATORE-35
DEPARTMENT OF MECHANICAL ENGINEERING



Engineering Drawing –
UNIT III Topic – SECTION OF SOLIDS
Faculty i/c: C.SENTHILKUMAR,ASP/MECH,

A hexagonal pyramid with base 25mm and axis 50mm long. rests with its base on HP and an edge of its base is \perp to VP. It is cut by a section plane to VP inclined at 30° to HP and passing through a point on the axis 20mm below the apex. Draw the sectional view and sectional top view.



Handwritten text in a pink oval stamp, possibly a date or signature.



SNS COLLEGE OF TECHNOLOGY, COIMBATORE-35
DEPARTMENT OF MECHANICAL ENGINEERING

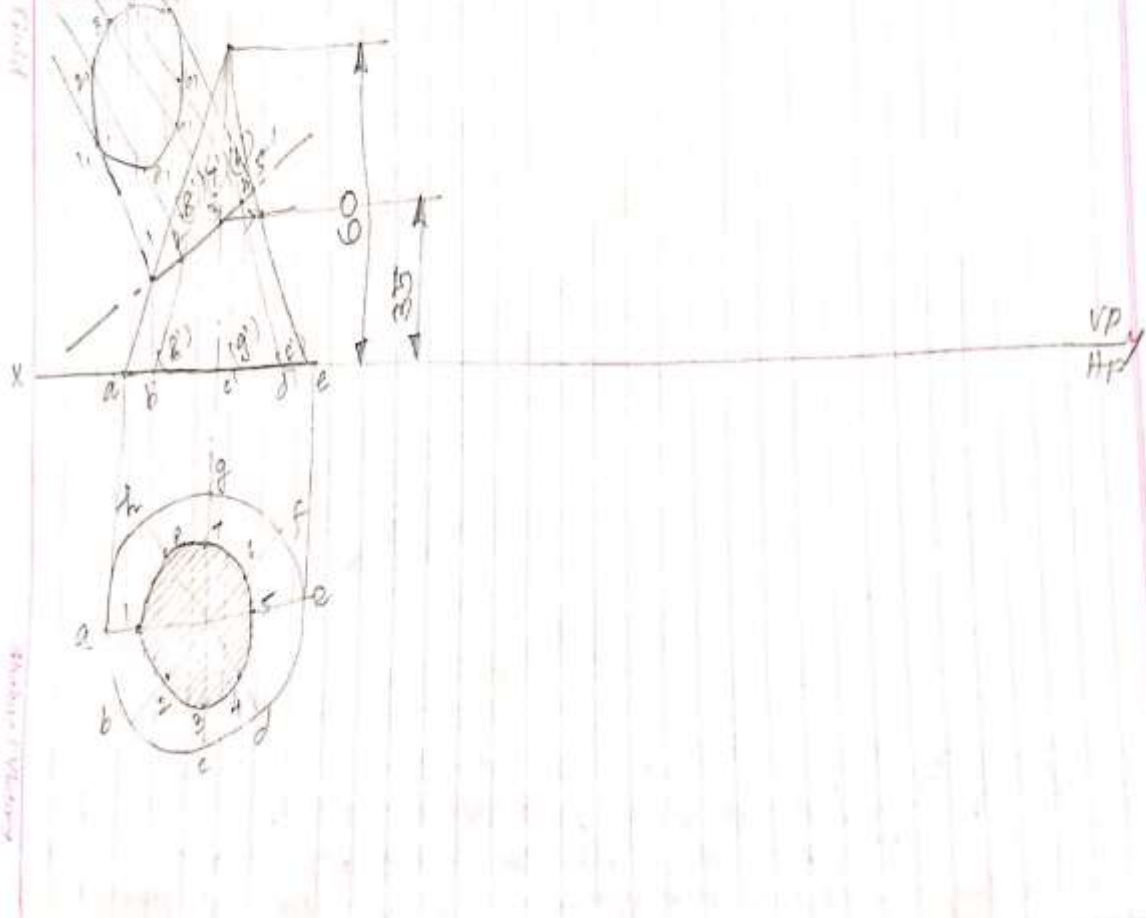


Engineering Drawing –

UNIT III Topic – SECTION OF SOLIDS

Faculty i/c: C.SENTHILKUMAR,ASP/MECH,

A cone base 50mm diameter and axis 60mm long, rests with its base on HP. It is cut by a section plane \perp to VP. Inclined at 60° to VP and at a distance of 25mm from its axis. Draw the Sectional ^{TOP} front view and the true shape of the section.





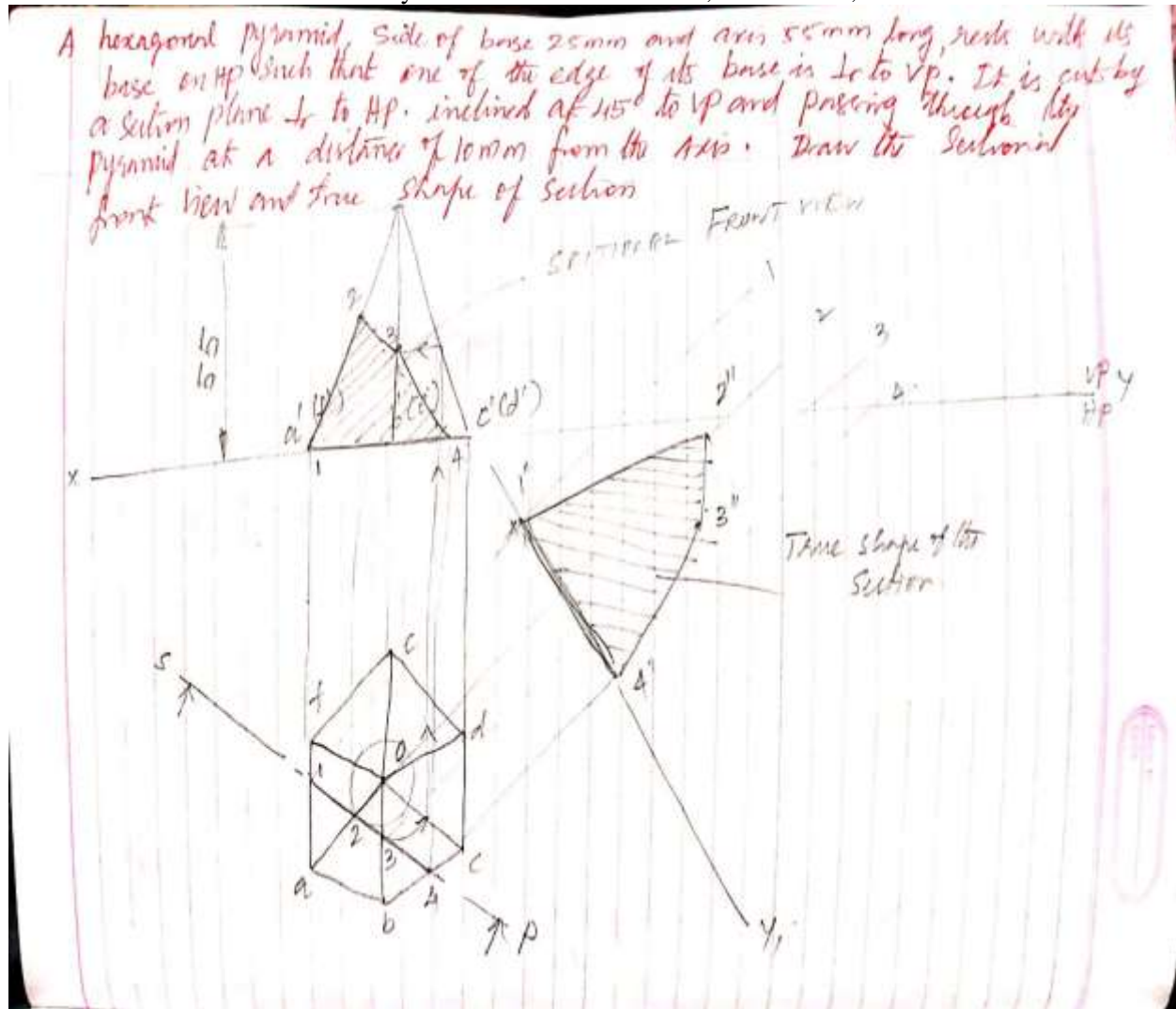
SNS COLLEGE OF TECHNOLOGY, COIMBATORE-35
DEPARTMENT OF MECHANICAL ENGINEERING



Engineering Drawing –

UNIT III Topic – SECTION OF SOLIDS

Faculty i/c: C.SENTHILKUMAR, ASP/MECH,





SNS COLLEGE OF TECHNOLOGY, COIMBATORE-35
DEPARTMENT OF MECHANICAL ENGINEERING

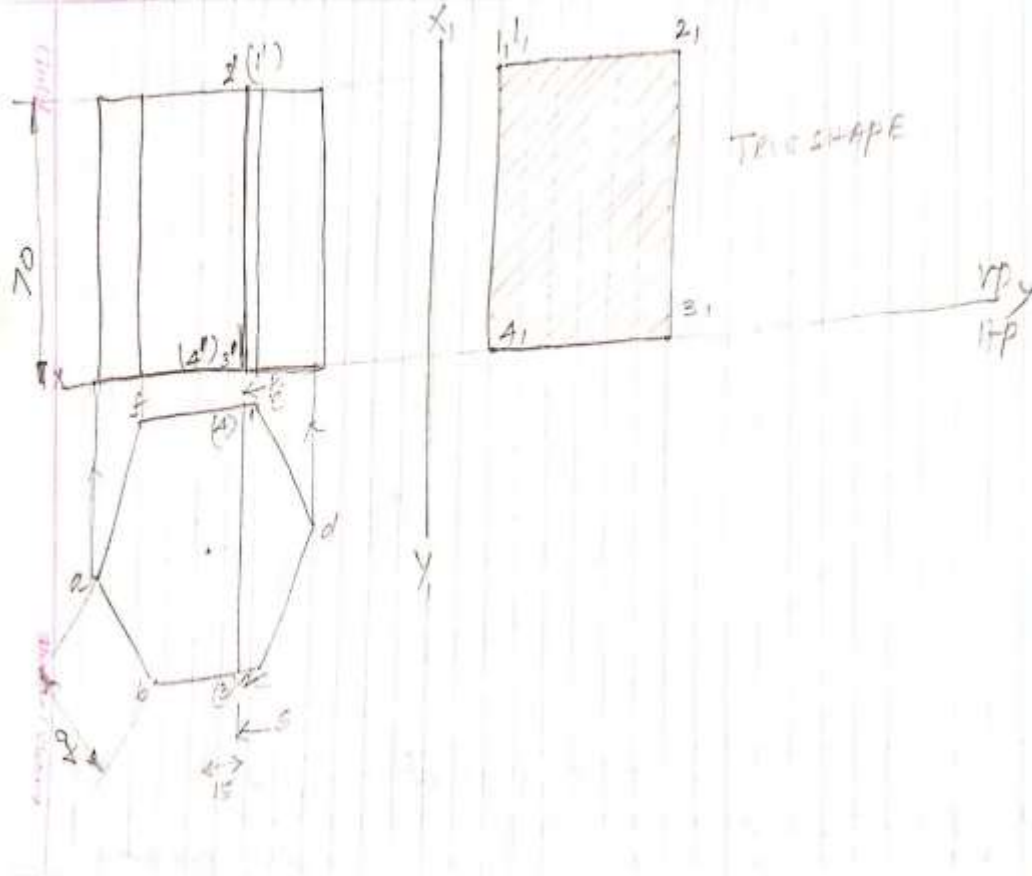
Engineering Drawing –

UNIT III Topic – SECTION OF SOLIDS

Faculty i/c: C.SENTHILKUMAR,ASP/MECH,



A Pentagonal prism with base 40mm and height 70mm stands vertical with a base edge parallel to VP. It is cut by vertical plane \perp to XY at a distance of 15mm from the axis. Draw the true shape.

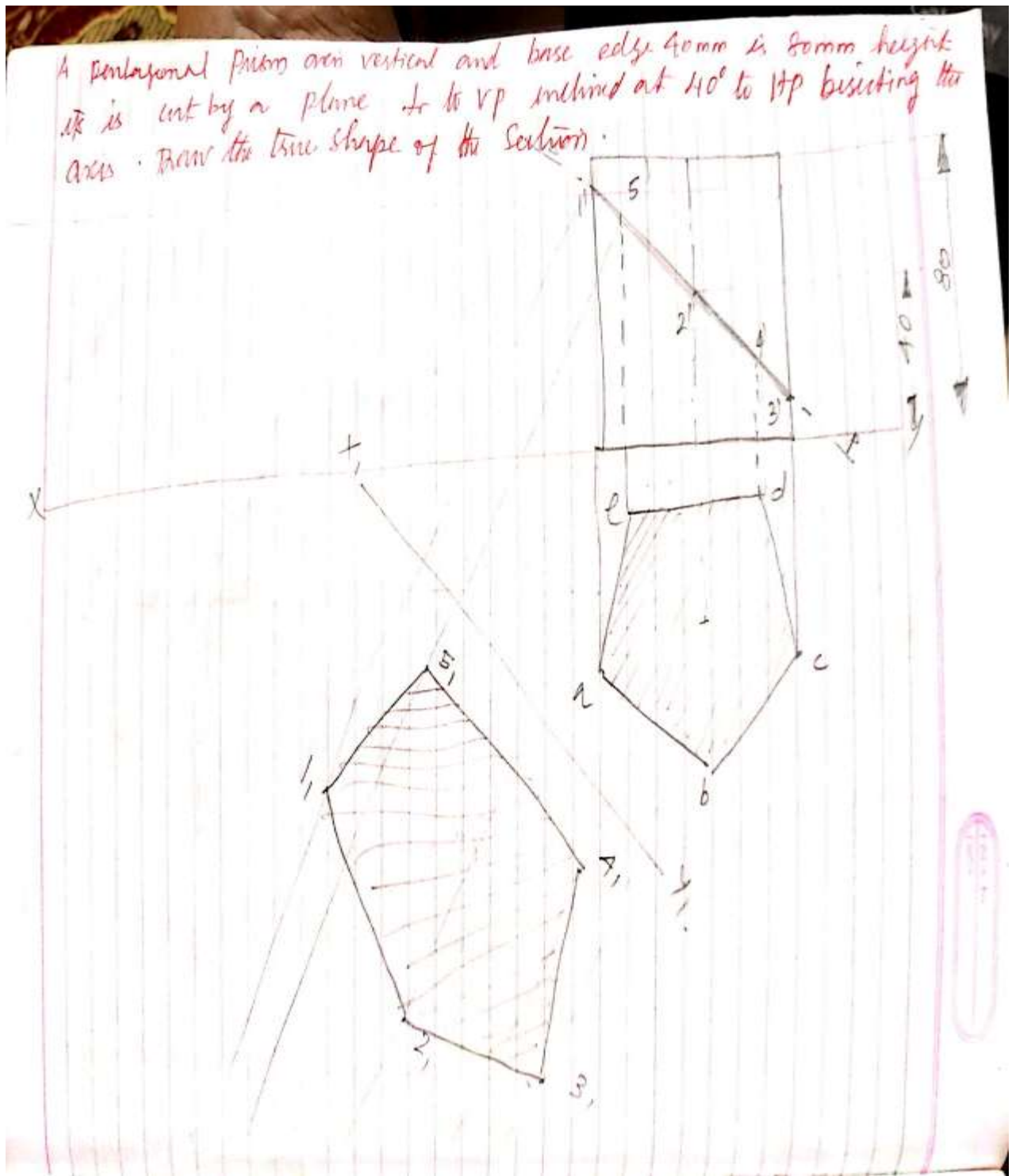




SNS COLLEGE OF TECHNOLOGY, COIMBATORE-35
DEPARTMENT OF MECHANICAL ENGINEERING



Engineering Drawing –
UNIT III Topic – SECTION OF SOLIDS
Faculty i/c: C.SENTHILKUMAR, ASP/MECH,



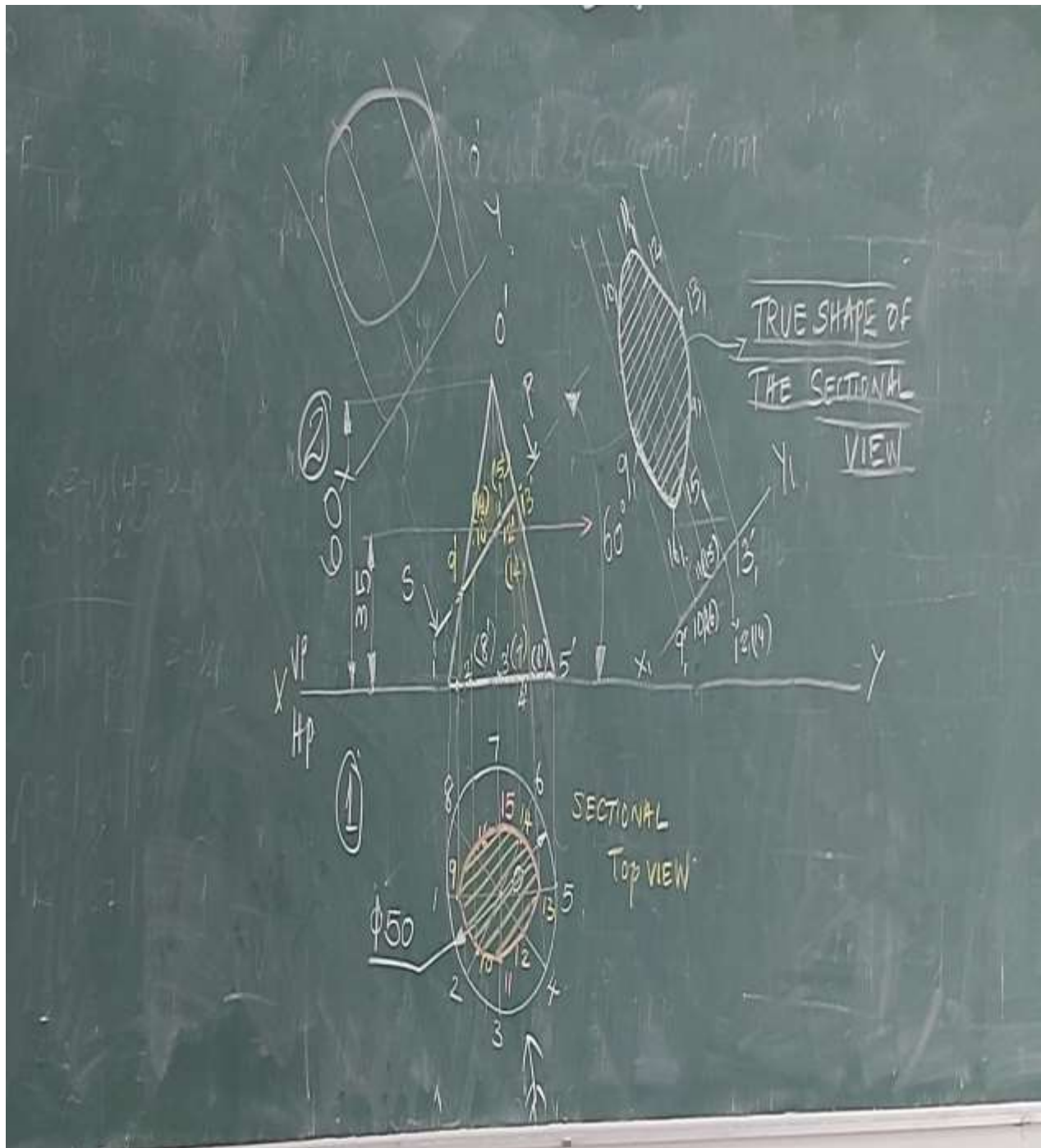


SNS COLLEGE OF TECHNOLOGY, COIMBATORE-35
DEPARTMENT OF MECHANICAL ENGINEERING

Engineering Drawing –

UNIT III Topic – SECTION OF SOLIDS

Faculty i/c: C.SENTHILKUMAR,ASP/MECH,



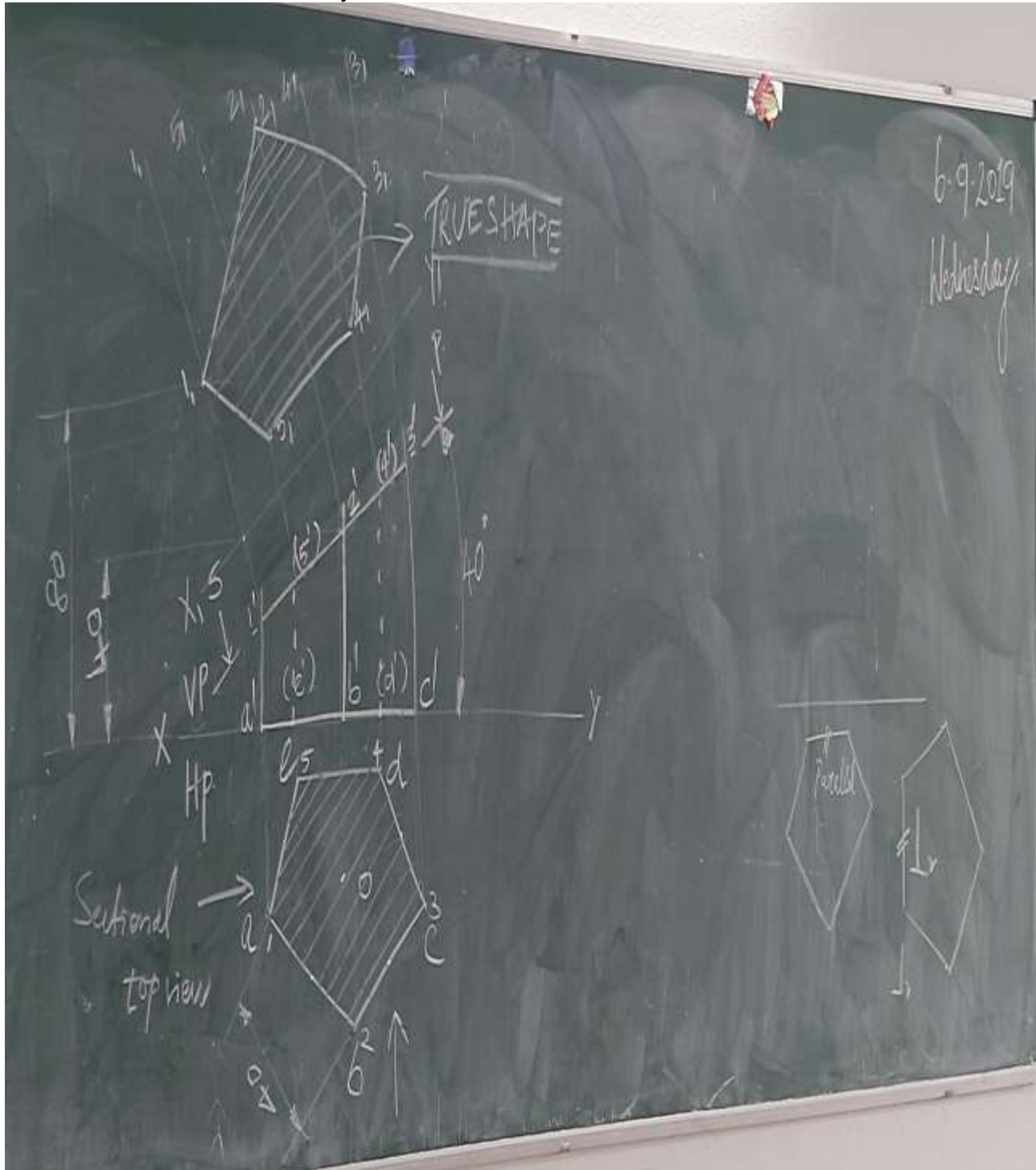


SNS COLLEGE OF TECHNOLOGY, COIMBATORE-35
DEPARTMENT OF MECHANICAL ENGINEERING

Engineering Drawing –

UNIT III Topic – SECTION OF SOLIDS

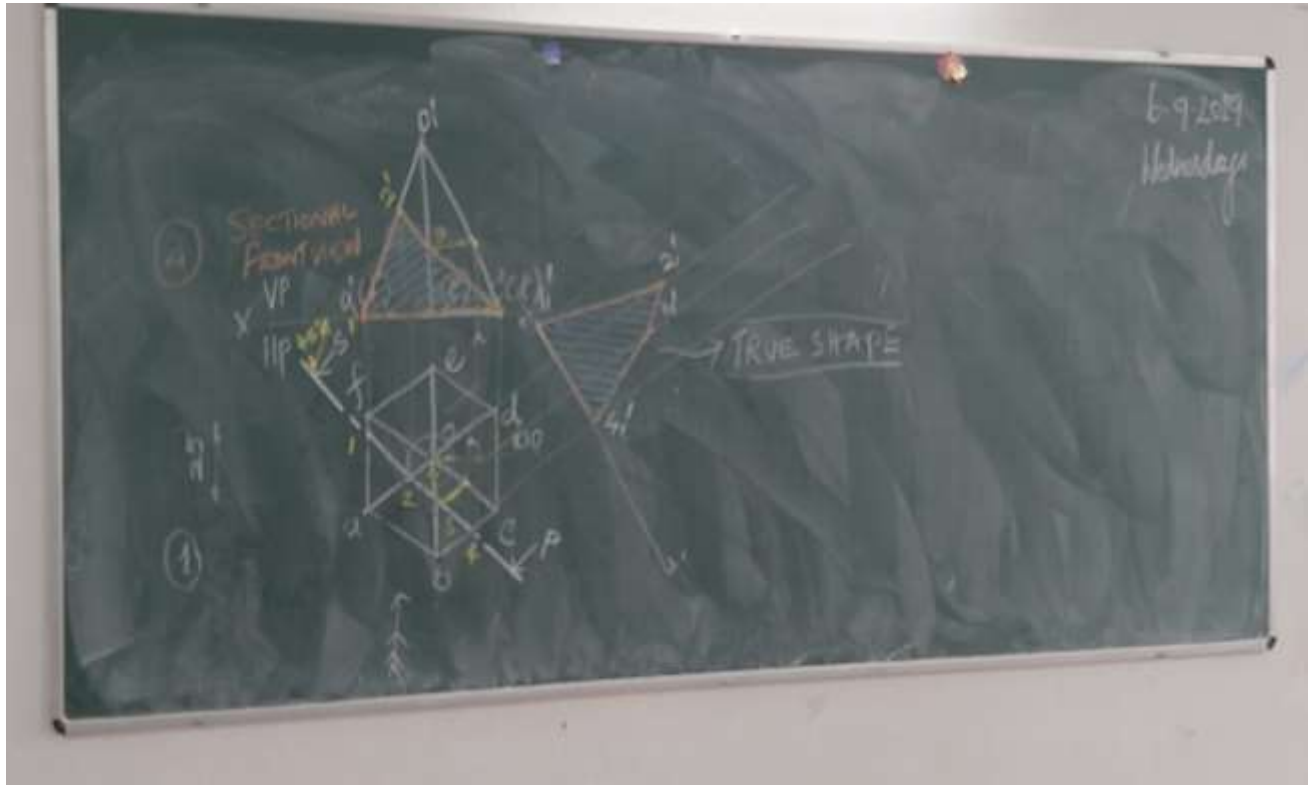
Faculty i/c: C.SENTHILKUMAR,ASP/MECH,





SNS COLLEGE OF TECHNOLOGY, COIMBATORE-35
DEPARTMENT OF MECHANICAL ENGINEERING

Engineering Drawing –
UNIT III Topic – SECTION OF SOLIDS
Faculty i/c: C.SENTHILKUMAR,ASP/MECH,



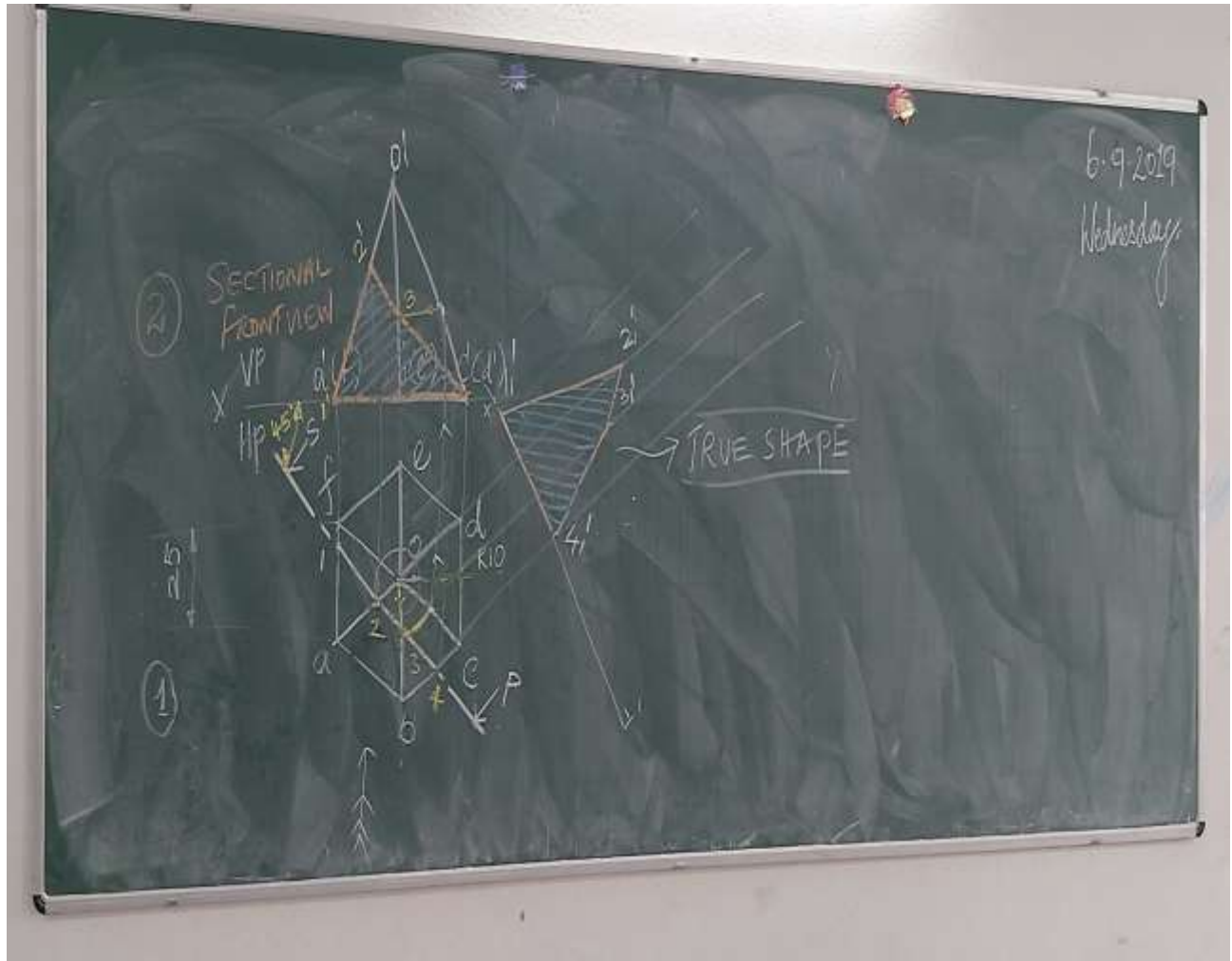


SNS COLLEGE OF TECHNOLOGY, COIMBATORE-35
DEPARTMENT OF MECHANICAL ENGINEERING

Engineering Drawing –

UNIT III Topic – SECTION OF SOLIDS

Faculty i/c: C.SENTHILKUMAR,ASP/MECH,

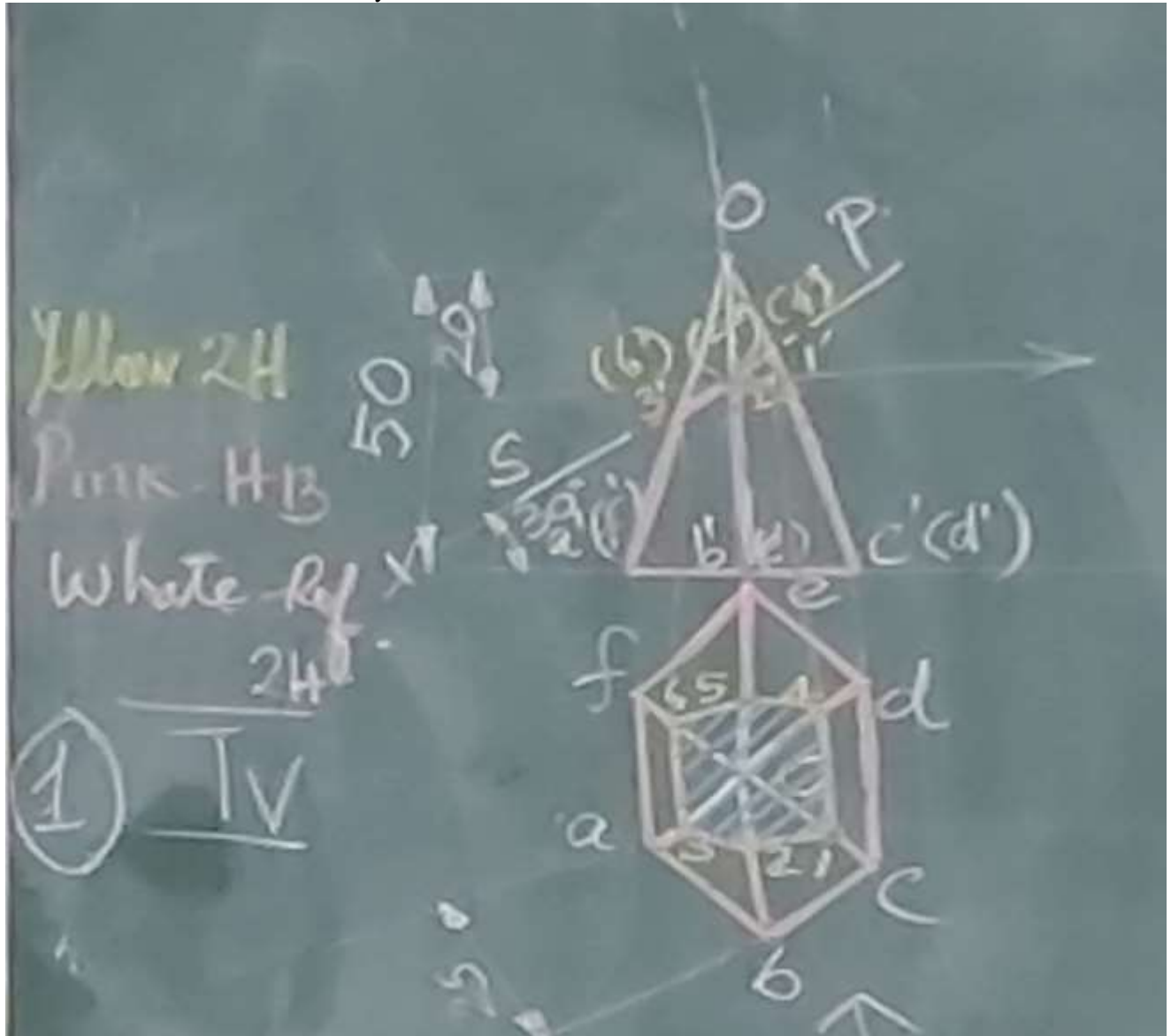




SNS COLLEGE OF TECHNOLOGY, COIMBATORE-35
DEPARTMENT OF MECHANICAL ENGINEERING



Engineering Drawing –
UNIT III Topic – SECTION OF SOLIDS
Faculty i/c: C.SENTHILKUMAR,ASP/MECH,





SNS COLLEGE OF TECHNOLOGY, COIMBATORE-35
DEPARTMENT OF MECHANICAL ENGINEERING



Engineering Drawing –
UNIT III Topic – SECTION OF SOLIDS
Faculty i/c: C.SENTHILKUMAR,ASP/MECH,

