



SNS COLLEGE OF TECHNOLOGY
(AN AUTONOMOUS INSTITUTION)
COIMBATORE-35

I BE / I SEMESTER
19GET102-BCM(CIVIL)



SURVEYING

Surveying is the science and art of making measurements, necessary to determine relative positions of points above, on beneath the surface of the earth by means of direct or indirect measurement of distance and direction or elevation.





PLAN AND MAP

PLAN

- ❖ Projection of the ground
- ❖ Representation of an area on some



MAP

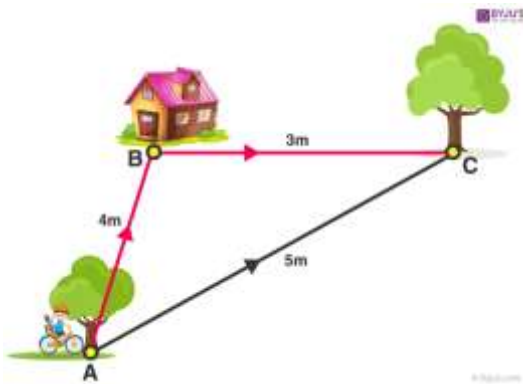
- ❖ Minimized adopted version of sketch

EX: Map of India





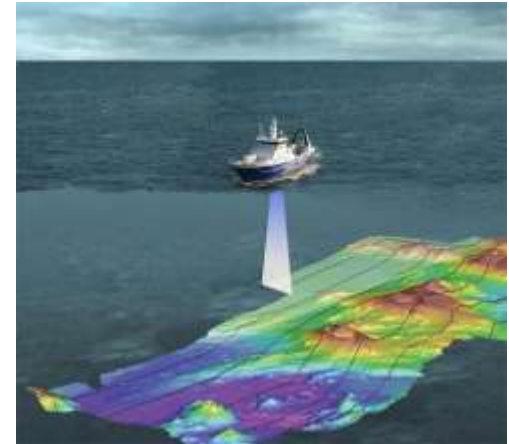
OBJECTIVES OF SURVEYING





CLASSIFICATION OF SURVEY

- **Classification based on the nature of field**
- ✓ **Land surveys**
- ✓ **Marine and navigation surveys**
- ✓ **Astronomical surveys**
- ✓ **Underground surveys**
- ✓ **Aerial surveys**





➤ **Classification based on objective of survey**

✓ **Engineering surveys**

✓ **Military surveys**

✓ **Geological surveys**

➤ **Classification based on objective of survey**

✓ **Mine surveys**

✓ **Archeological surveys**

✓ **Route surveys**

✓ **Construction surveys**

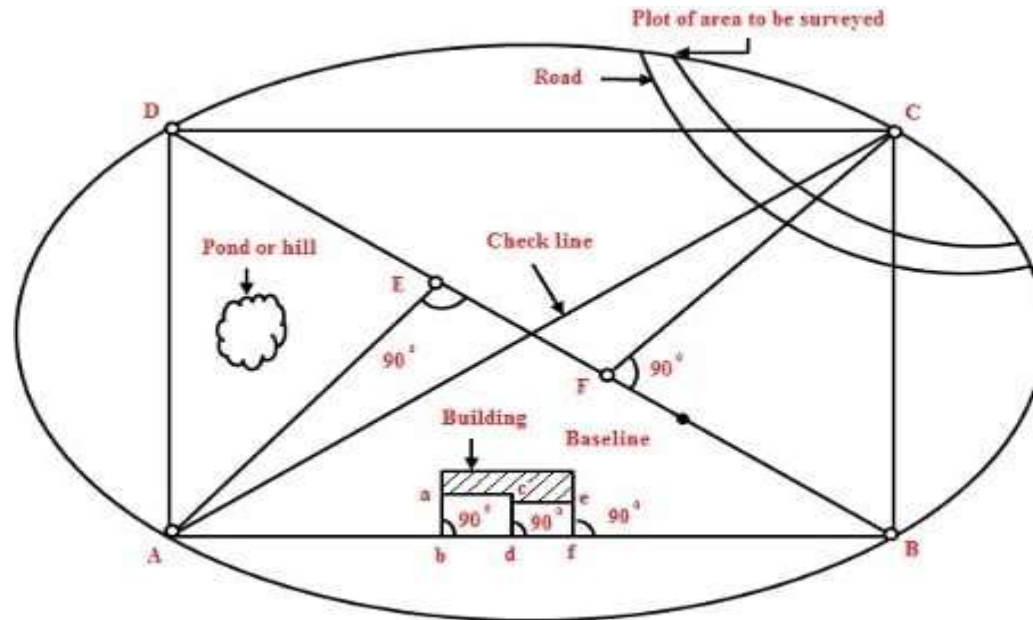


- **Classification based on methods employed**
 - ✓ **Triangulation survey**
 - ✓ **Traverse survey : Closed traverse and Open traverse**
- **Classification based on instruments used**
 - ✓ **Chain survey**
 - ✓ **Compass survey**
 - ✓ **Plane table survey**
 - ✓ **Theodolite survey**
 - ✓ **Tachometric survey**
 - ✓ **Photographic and Aerial survey**



PRINCIPLES OF SURVEYING

❖ Work from whole to part

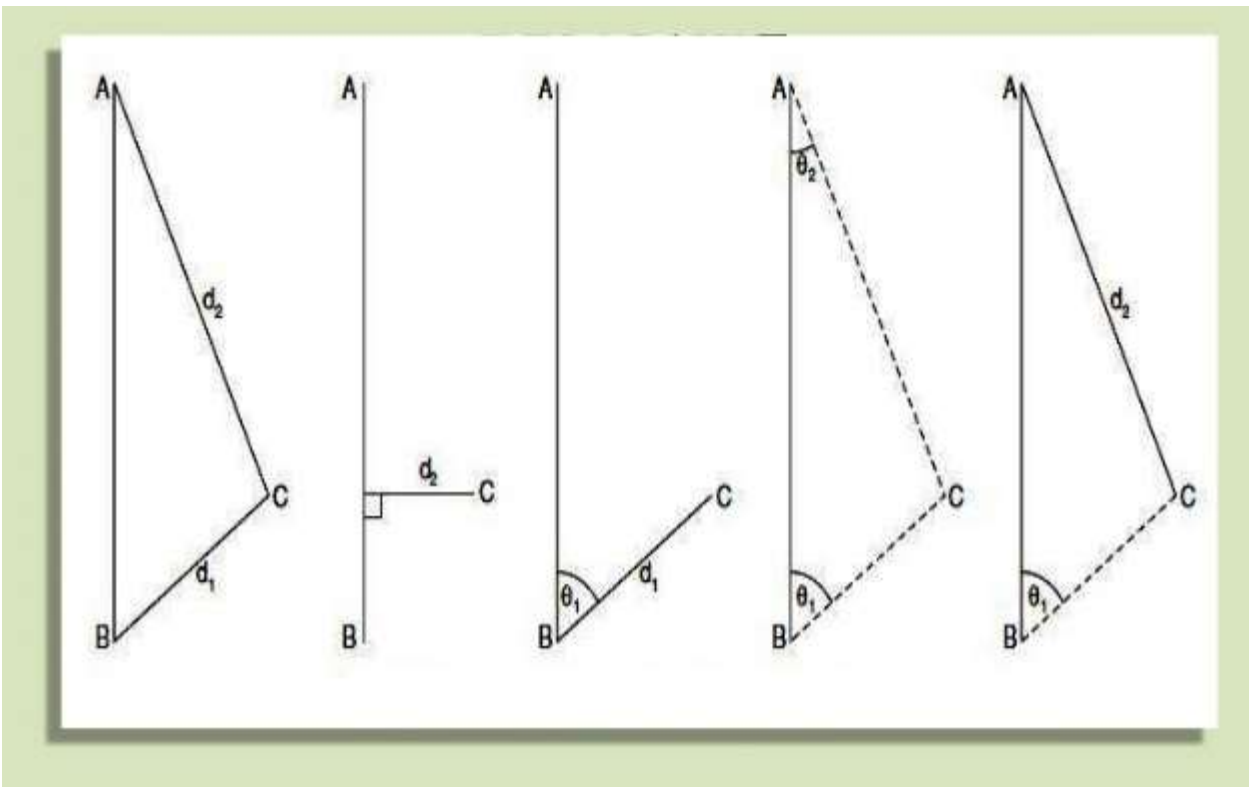


A simple networks of triangle in a plot of land to be surveyed



PRINCIPLES OF SURVEYING

❖ Fix new points by at least two independent processes





THANK YOU...