

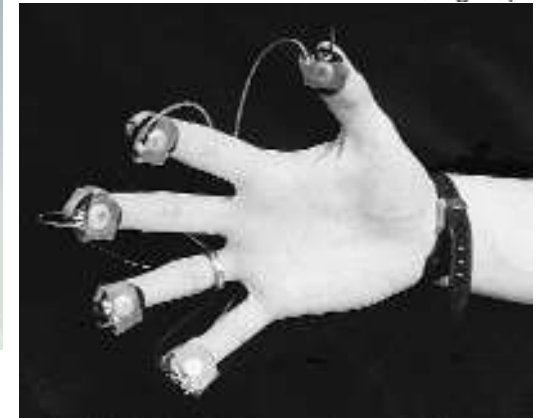


ELECTRICAL MACHINES IN ROBOTICS AND AUTOMATION

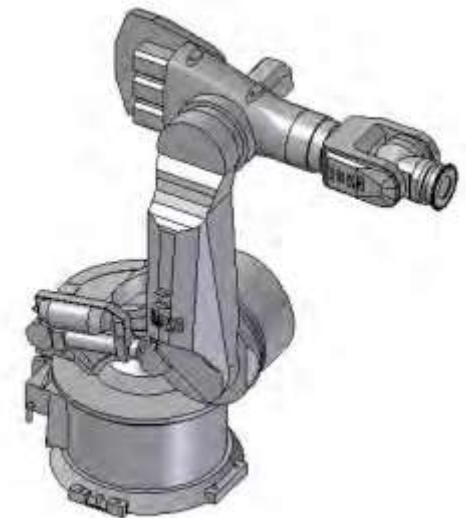
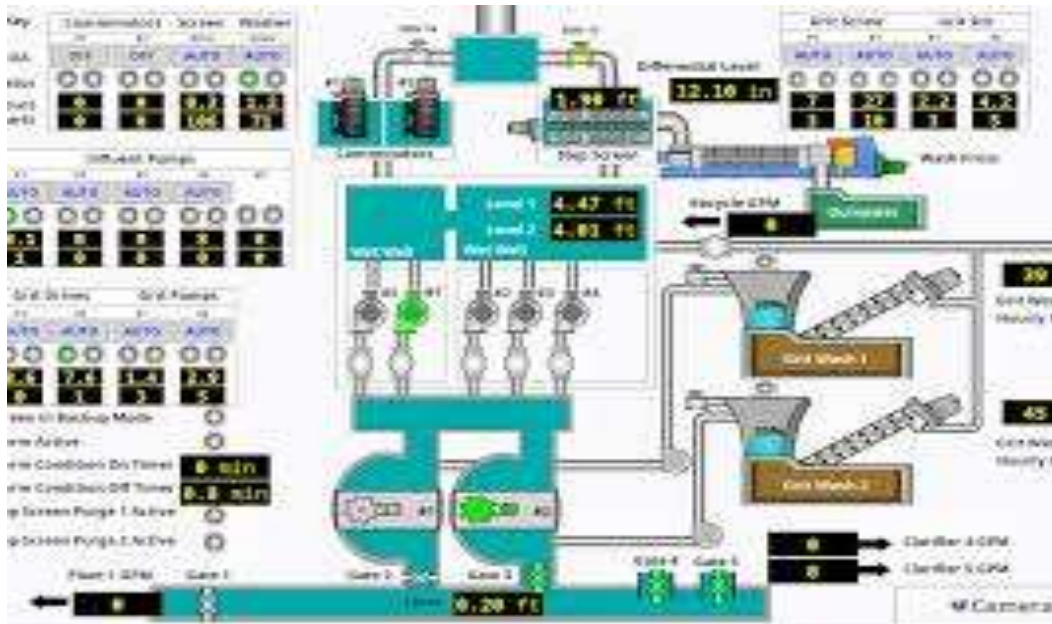


UNIT IV - INDUSTRIAL AUTOMATION

PLC – ladder and FBD programming – analog inputs – HMI –
pneumatic and hydraulic drives – AC drives and servo drives



INDUSTRIAL AUTOMATION





What is INDUSTRIAL AUTOMATION





What is A Industrial Automation

Industrial automation is the control of machinery and processes used in various industries by **autonomous systems through the use of technologies like robotics and computer software.**

Industries implement automation to increase productivity and reduce costs related to employees, their benefits and other associated expenses, while increasing precision and flexibility.





Types of Industrial Automation

Types of Industrial Automation

- Fixed (Hard) Automation.
- Programmable Automation.
- Flexible (Soft) Automation.
- Integrated Automation (TIA)

