



**SNS COLLEGE OF TECHNOLOGY**  
**(Autonomous)**  
**DEPARTMENT OF AERONAUTICAL ENGINEERING**



# **UNIT-4**

# **TESTING AND INSPECTION**



# SYMPTOMS OF FAILURE

Symptoms of failure can be carried out by

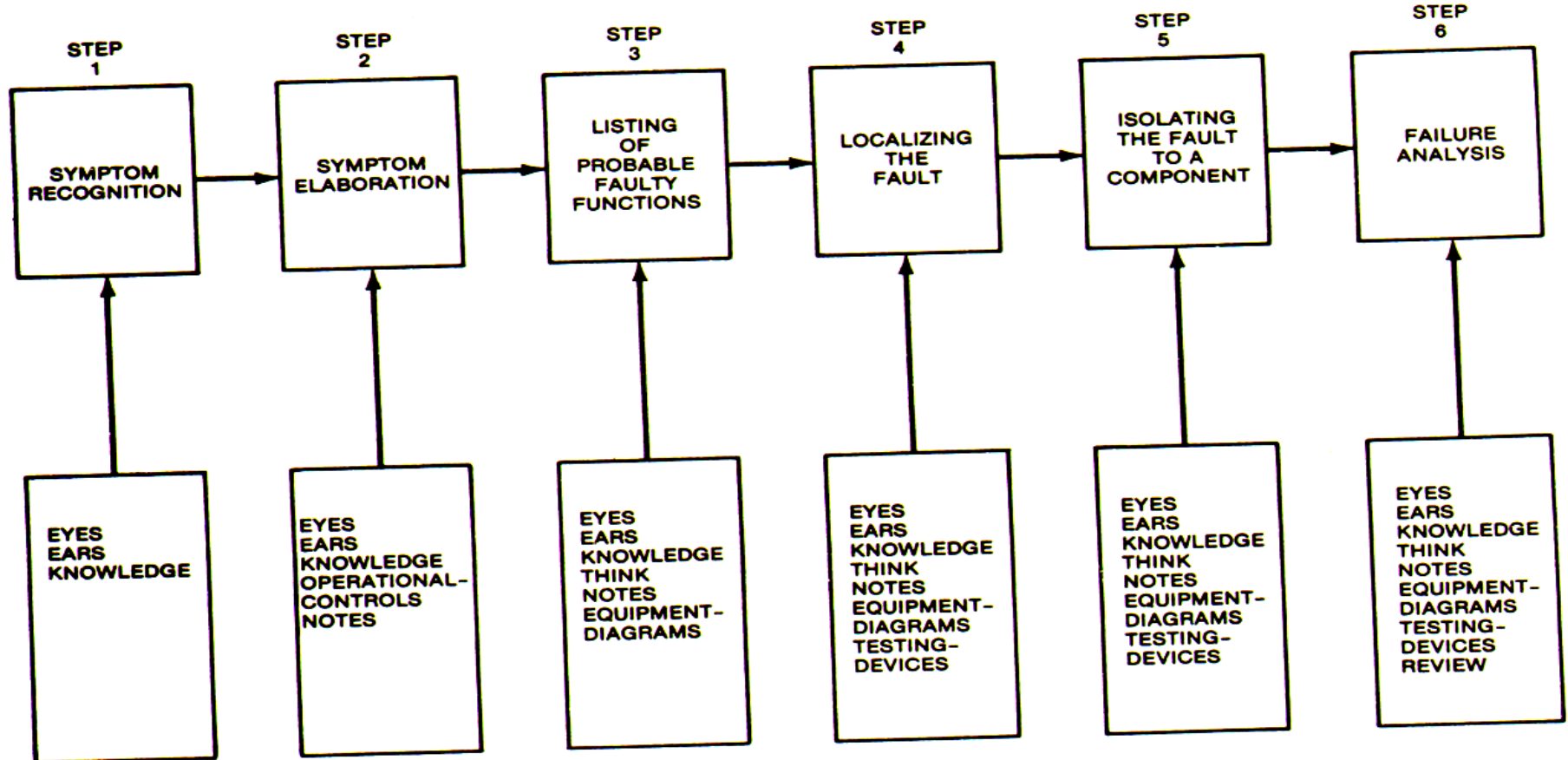
# FAILURE ANALYSIS

and

# TROUBLE SHOOTING



# SIX STEP IN TROUBLE SHOOTING





# SYMPTOMS OF FAILURE

## 1. SYSTEM RECOGNITION:

The first step in trouble shooting – involves having **knowledge of engine condition** that is not normal and knowing to what extent the fault is affecting the engines performance.



## 2. SYSTEM ELABORATION:

It is the next logical step, once a fault or malfunction has been detected. **Test equipment helps the technician to evaluate the performance of the engine and its components.** The technicians should use these aids to assess the effects of the symptoms and to provide additional information to further define the symptoms.