



# SNS COLLEGE OF TECHNOLOGY

(An Autonomous Institution)

COIMBATORE-35

Accredited by NBA-AICTE and Accredited by NAAC – UGC with A+ Grade

Approved by AICTE, New Delhi & Affiliated to Anna University, Chennai



## UNIT III: ELECTRICAL SAFETY IN RESIDENTIAL, COMMERCIAL AND AGRICULTURAL INSTALLATIONS

TOPIC: **Do's and Don'ts for safety in the use of domestic  
electrical appliances.**





The topic of electrical safety might not spark your interest as much as other topics, but that doesn't mean it isn't an important subject of conversation for us to conduct.

In truth, there are a lot of do's and don'ts for electrical safety that people should be aware of.

Which is why the team at Creation World Safety recommends hosting an electrical safety training course for you and your employees.

Today, the majority of office spaces are extremely wired. Besides from traditional electricity, the wires of phones, headsets, computer hard drives, chargers, copy machines, etc. snake across floors and under desks in a majority of businesses. As such, taking charge of the well-being of your employees preemptively by educating them about electrical safety is a wise decision. In the meantime, here is a list of do's and don'ts on electrical safety that you can use to make better, safer decisions now.



## Do's:

- Treat every electrical device like it is energized, even if it does not look like it is plugged in or operational.
- Unplug appliances before performing any service or repairs on them.
- When working on electrical devices, only use tools that have official “*non-conducting*” handles.
- Try to limit the use of electrical equipment in rooms that are very cold or have a lot of condensation.
- When handling electrical equipment, make sure your hands are dry.
- If you spill any kind of liquid on electrical equipment, *first* immediately shut off power to the equipment via the main switch or circuit breaker *and then* unplug the equipment itself.
- Keep all electrical circuit contact points enclosed.
- Finally, if you are able to, work on electrical equipment with one hand while the other hand is out of the way at your side or in your pocket. This minimizes the chance of a current passing through your chest should a spark/accidental charge occur.



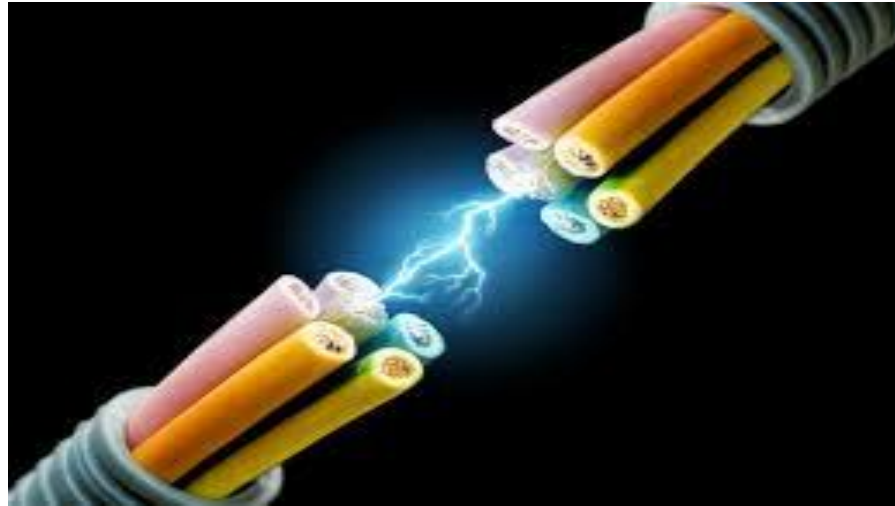
## Don'ts

- First and foremost – don't touch active electrical circuits.
- Never touch electrical equipment when any part of your body is wet, (that includes fair amounts of perspiration).
- Do not store liquids of any sort near electrical equipment.
- If a person comes into contact with an energized electrical conductor, do not touch the equipment, its cords, or the person affected because the charge may pass to you. Instead, shut down the main power source via the circuit breaker and then unplug the equipment using a leather belt.
- Do not wear metal of any sort if you are working on electrical equipment.
- Also, do not try to poke, probe, or fix electrical equipment with objects like pencils or rulers because the metal in them can serve as a form of conductor.

Overall, these are some great rules to adhere to. However, there are many more aspects of proper electrical safety that are vital to understand. So, take charge of your safety and the safety of your employees by contacting the team at Creation World Safety. Call and schedule your electrical safety training course today!



# RECAP....



# ...THANK YOU