



SNS COLLEGE OF TECHNOLOGY

(An Autonomous Institution)

COIMBATORE-35

Accredited by NBA-AICTE and Accredited by NAAC – UGC with A+ Grade

Approved by AICTE, New Delhi & Affiliated to Anna University, Chennai



DEPARTMENT OF ELECTRICAL AND ELECTRONICS ENGINEERING

COURSE NAME: 19EEE302-ELECTRICAL SAFETY ENGINEERING
III YEAR / V SEMESTER

UNIT 2- SAFETY DURING INSTALLATION OF PLANT AND EQUIPMENT

Topic 1 – Preliminary Preparations, Preconditions for Start of Installation Work



SUCCESSFUL STUDENT

Positive
Attitude

Professionally
Groomed

Socially
Interactive

Technically
Skillful



Think—Be Aware

Many accidents could have been prevented if the injured victim had concentrated on the safety aspects of the job. Thinking about personal or job-related problems while working on or near energized conductors is a one-way ticket to an accident. Always stay alert to the electrical hazards around the work area.



Understand Your Procedures

Every company has defined safety procedures which are to be followed. Each worker should be thoroughly familiar with all the safety procedures that affect his or her job. Knowledge of the required steps and the reasons for those steps can save a life. All employees should go through extensive safety training.

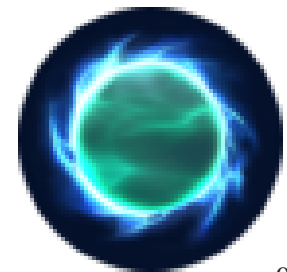


Follow Your Procedures

In the past, some facilities have allowed the violation of safety procedures in the production. Such actions have invariably proven to be costly in terms of human and/or death. Violation of safety procedures without good cause should be a offense. What constitutes “good cause” must be decided on a local basis; however, of lesser significance than immediate danger to life should not be acceptable.

Use Appropriate Safety Equipment

No matter how meticulous workers are, accidents do occasionally happen. Equipment failures, lightning strikes, switching surges, and other such events can cause shock, arc, or blast. Also, sometimes it becomes necessary for employees to work on or very close to energized conductors, which increases the chance of accidental contact. Because of these reasons, appropriate safety equipment should be used any time workers are exposed to the possibility of one of the three electrical hazards. Remember that nothing is sadder than an accident report which explains that the dead or injured worker was not wearing safety equipment.





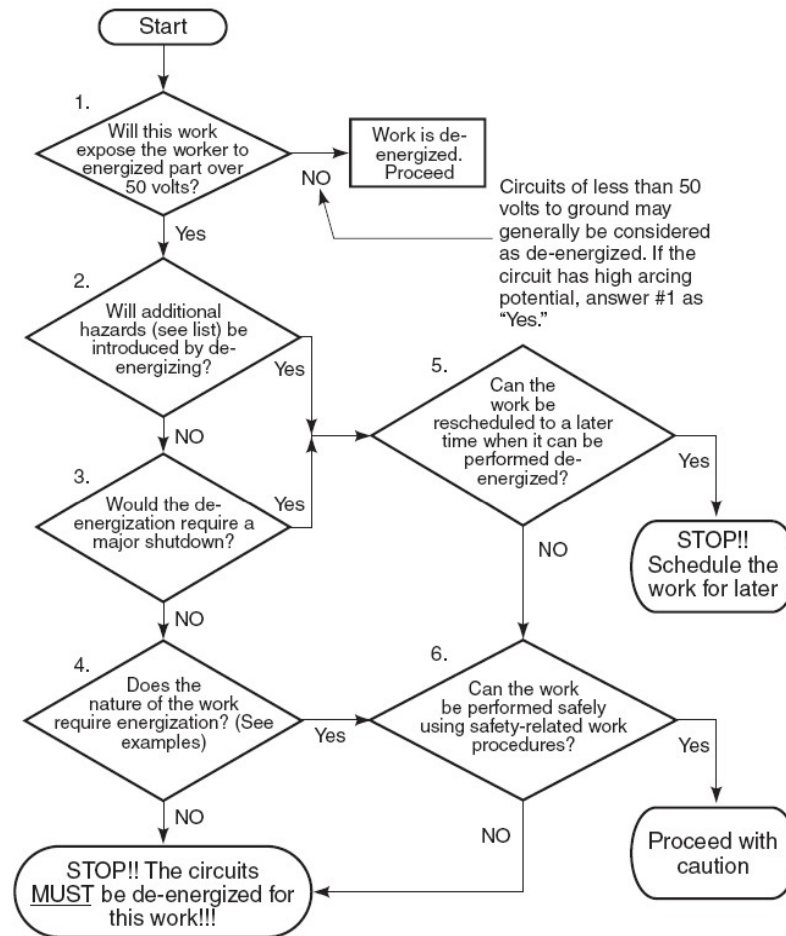
Ask If You Are Unsure, and Do Not Assume

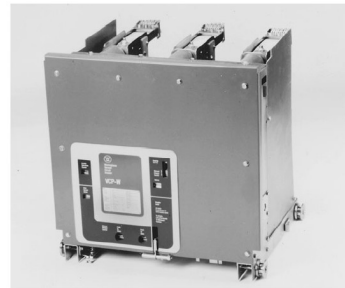
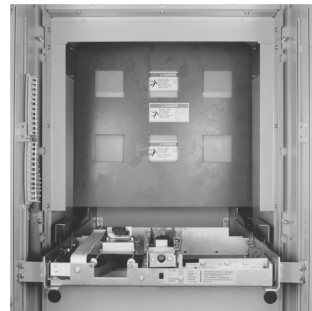
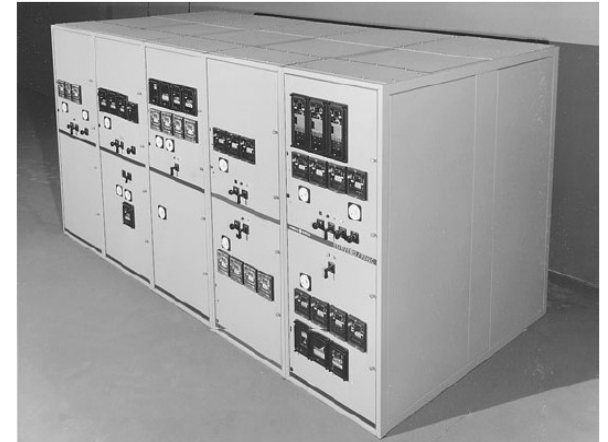
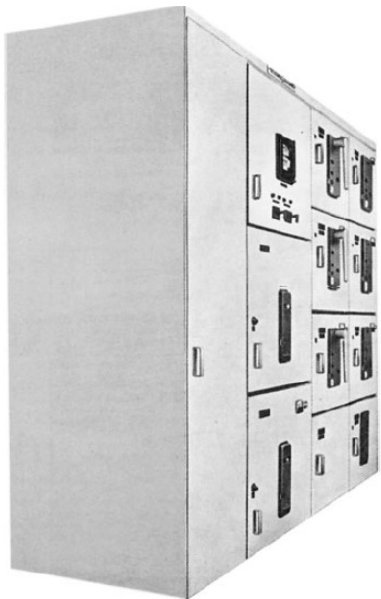
Ignorance kills and injures many people each year. No one should ever get fired for asking a question—especially if it is a safety-related question. Anyone who is uncertain about a particular situation should be encouraged to ask questions which should then be answered by a qualified person immediately and to the fullest extent possible.

The Fundamental Rules

All regulatory standards are quite clear in their requirements to de-energize a circuit before employees work on or near it. Stated simply:

All circuits and components to which employees may be exposed should be deenergized before work begins.





SWITCHGEAR



THANK YOU!!

