



# SNS COLLEGE OF TECHNOLOGY



Coimbatore-35  
An Autonomous Institution

Accredited by NBA – AICTE and Accredited by NAAC – UGC with ‘A+’ Grade Approved by AICTE, New Delhi & Affiliated to Anna University, Chennai

## DEPARTMENT OF MECHANICAL ENGINEERING 19GET201 –PROFESSIONAL ETHICS & HUMAN VALUES IV YEAR VII SEM UNIT 1 –Engineering Ethics

### TOPIC – Types of Inquiry & Theories of Right Action





# WHAT IS INQUIRY & ETHICAL THEORIES?

Let's start with the first question



# Review

**X What is Morality?**

**X What is Moral Development?**

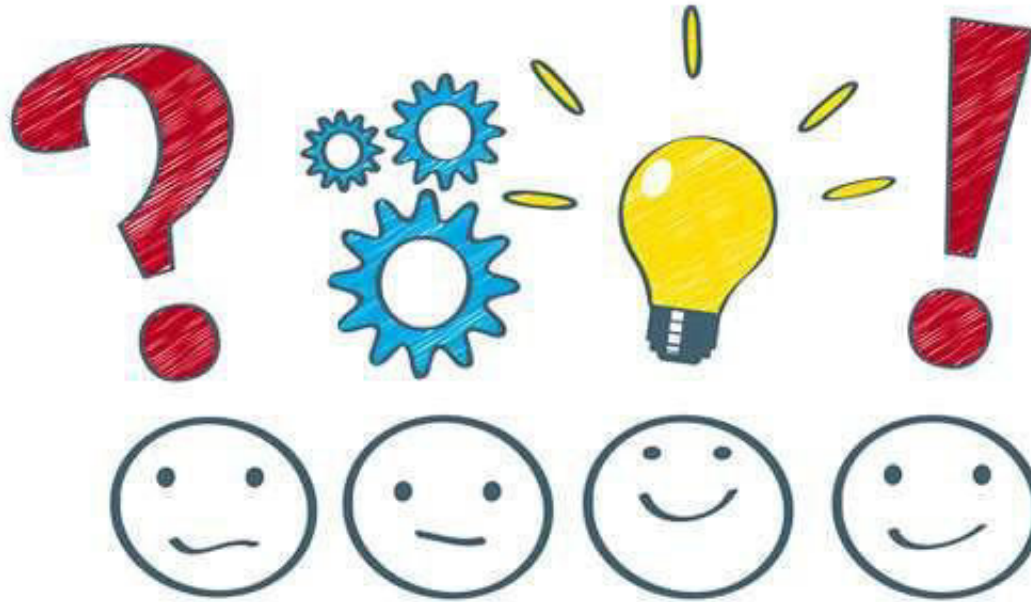
**X What is Kohlberg's and Gilligan's Theory of Moral Development?**

**X Moral Autonomy**

**X Consensus and Controversy**

**X Autonomy and Authority**

# What is Inquiry?



Inquiry is quite simply a systematic investigation into a problem, issue, topic or idea.

# Types of Inquiries

The issues can be resolved by following an investigation procedure, step by step in order to have a clear understanding towards the issue. Here we have three different types of inquiries.

- ✘ Normative inquiries
- ✘ Conceptual inquiries
- ✘ Factual or descriptive inquiries

# Normative Inquiries



Normative Inquiry refers to the description that describes what one ought to do under a specific circumstance. This is the expected ideal response, which might differ from what one believes to be right or wrong.

# Normative Inquiries

✘ This list identifies and justifies the morally desirable nature for guiding

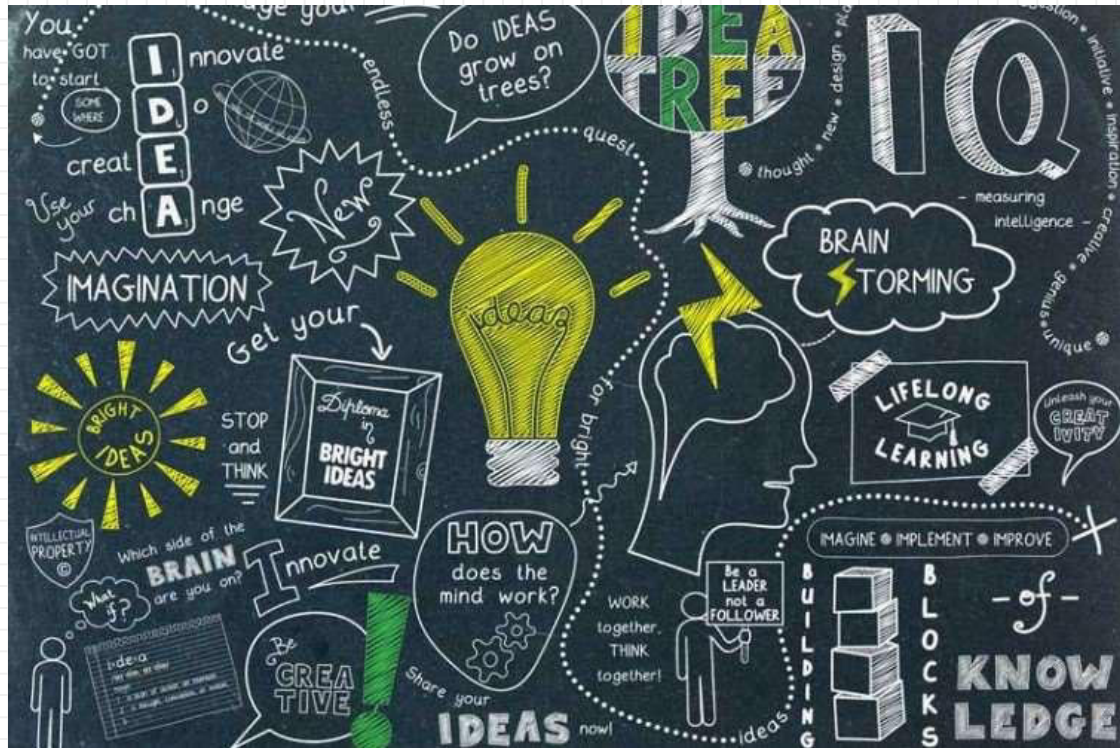
individuals or groups

✘ This includes the responsibility of engineers to protect the public safety and how they should respond under such dangerous practices

✘ Normative inquiries also quote the laws and procedures that affect the engineering practice on moral grounds

✘ They refer to the thought process where the moral rights are to be implemented in order to fulfill their professional

# Conceptual Inquiries



Conceptual

Inquiry refers

the meaning of

to

the description

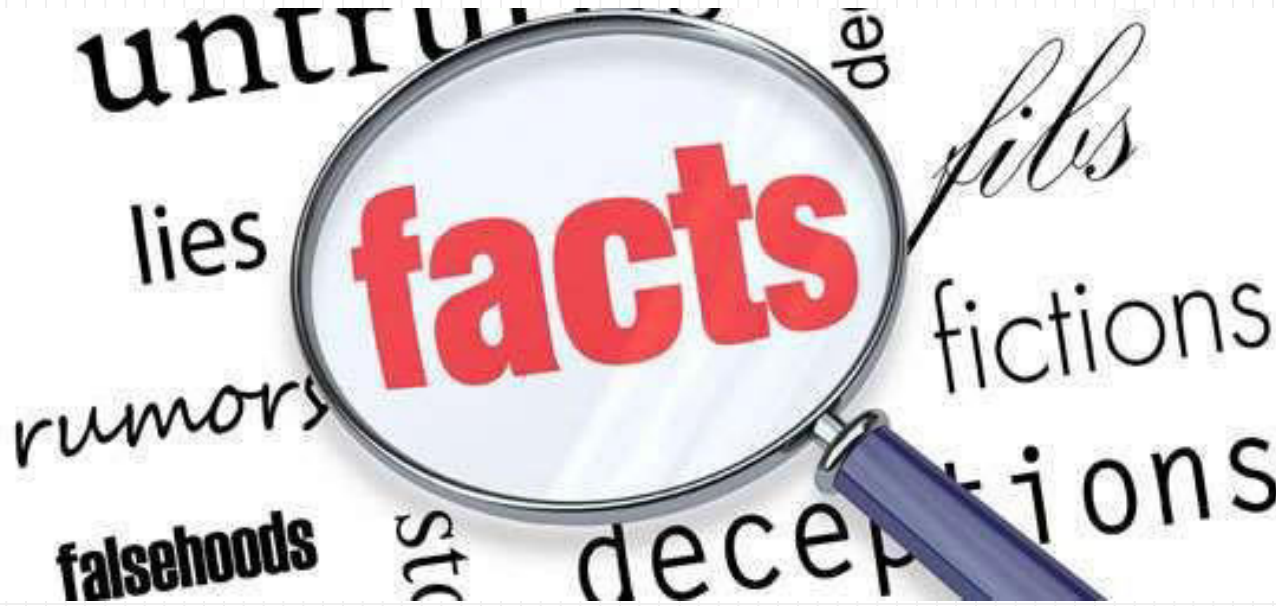
of concepts, principles and issues



# Conceptual Inquiries

- ✘ The ethics that an engineer should possess to protect the safety, health and welfare of the public, etc. are described under conceptual inquiries
- ✘ It describes what safety is and mentions the marginal issues of safety along with the precautions an engineer should take to avoid risk
- ✘ Conceptual inquiries mention the moral aspects of bribery and how its effects, along with the professional ethics and professionalism

# Factual and Descriptive Inquiries



Factual Inquiry or the descriptive inquiry help to provide the facts for understanding and finding solutions to the value based issues. The engineer has to conduct factual inquiries by using scientific techniques.

# Types of Ethical Theories



Depending upon the ethics a person is intended to follow, four theories were postulated by four different

philosophers

# Types of Ethical Theories

## Golden Mean:

The Golden Mean ethical theory was proposed by Aristotle. According to this theory, the solution to a problem is found by analyzing the reason and the logic. The Golden Mean virtue can be understood as the virtue of reaching a proper balance between extremes in conduct, emotion, desire and attitude.

---

## Rights-based Ethical Theory:

The Rights based ethical theory was proposed by John Locke. According to this theory, the solution to a problem is by realizing that every person has a right to live, live and let live is the philosophy behind this theory. towards life, health, liberty, possession, etc. are taken care of under this theory.

The rights of a person

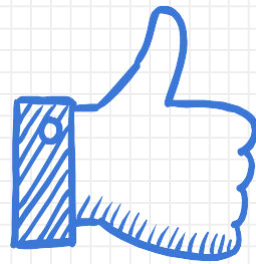
# Types of Ethical Theories

## Duty-based Ethical Theory:

The duty-based ethical theory was proposed by Immanuel Kant. According to this theory, every person has a duty to follow which is accepted universally, with no exceptions.

## Utilitarian Ethics:

The Utilitarian ethics was proposed by John Stuart. According to this theory, the happiness or pleasure of a greatest number of people in the society is considered as the greatest good. According to this philosophy, an action is morally right if its consequences lead to happiness of people and wrong if they lead to their unhappiness.



# THANKS!

## Any questions?