



## ANTIDEPRESSANTS



Antidepressants are medications used to treat **depression**.

Antidepressant drugs are those drugs which are used to **rehabilitate mentally depressed patients** for **improving their mental status**.

They are **mood elevating** and **anti-agitational**.

### CLASSIFICATION:

#### Tricyclic Antidepressants (TCA):

- Dibenzazepines:
- Imipramine
- Dibenzocyclo heptanes:
- Amitriptyline

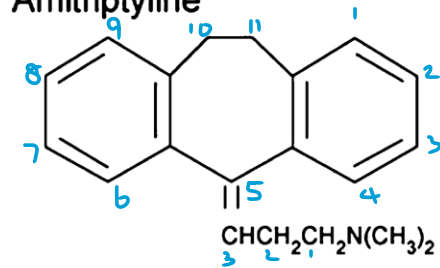
#### Monoamine Oxidase Inhibitors (MAOI):

- Phenelzine

#### Selective Serotonin Reuptake Inhibitors (SSRI):

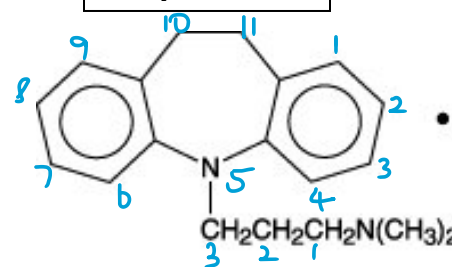
- Fluoxetine
- Sertraline
- Citalopram
- Escitalopram
- Fluvoxamine
- Paroxetine

#### Amitriptyline



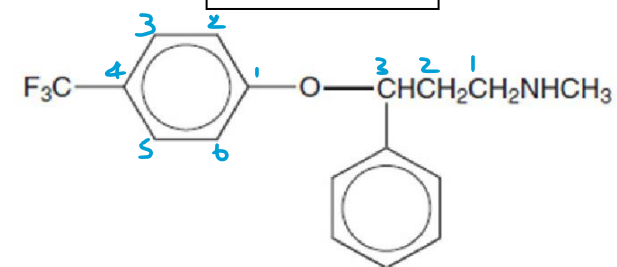
3- (10, 11-dihydro-5H-dibenzo  
[b, f] cycloheptene -5- ylidene)  
-N, N-dimethylpropan-1-amine

#### Imipramine



3- (10, 11-dihydro-5H-dibenzo  
[b, f] azepin-5-yl)  
-N, N-dimethylpropan-1-amine

#### Fluoxetine



N-methyl-3-phenyl-3-  
[4-(trifluoromethyl) phenoxy]  
propan-1-amine

### Selective Serotonin and Norepinephrine Reuptake Inhibitors (SSNRI):

- Venlafaxine
- Duloxetine

DRUG	MECHANISM	USES	STORAGE CONDITION	FORMULATIONS	BRAND NAMES
<b>Amitriptyline Hydrochloride</b> - Tricyclic antidepressants (TCA) - Dibenz cycloheptane ring	Inhibits Norepinephrine and Serotonin reuptake in adrenergic and serotonergic neurons	- Anxiety accompanied by depression - Prophylaxis of migraine pain - nocturnal enuresis in children	• 20-25°C • Store in tightly closed, light resistant containers	○ Tablet ○ Oral Solution ○ Injection	○ Elavil ○ Tryptizol ○ Amitrip
<b>Imipramine Hydrochloride</b> - Tricyclic antidepressants (TCA) - Dibenzazepine ring	Inhibits Norepinephrine and Serotonin reuptake by nerve cells	- Endogenous depression - anxiety - anorexia - nocturnal enuresis in children - phobias	• Room temperature • Store in tightly closed, light resistant containers protected from moisture	○ Capsule ○ Tablet ○ Injection ○ Mixture	○ Tofranil ○ Impratab ○ Antidep ○ Depsonil

<p><b>Fluoxetine</b></p> <ul style="list-style-type: none"> <li>- Selective Serotonin Reuptake Inhibitor (SSRI)</li> <li>- Atypical antidepressant</li> </ul>	<p>Blocks the reuptake of serotonin at the serotonin reuptake pump of neuronal membrane</p>	<ul style="list-style-type: none"> <li>- Endogenous depression</li> <li>- Obsessive compulsive disorder</li> <li>- anorexia</li> <li>- major depressive disorder (MDD)</li> </ul>	<ul style="list-style-type: none"> <li>• 15-30°C</li> <li>• Stored at room temperature protected from light.</li> </ul>	<ul style="list-style-type: none"> <li>○ Capsule</li> <li>○ Tablet</li> <li>○ Solution</li> </ul>	<ul style="list-style-type: none"> <li>○ Act Fluoxetine</li> <li>○ Prozac</li> <li>○ Fludac</li> <li>○ Flunil</li> <li>○ Flupar</li> </ul>
<p><b>Venlafaxine</b></p> <ul style="list-style-type: none"> <li>- Selective Serotonin and Norepinephrine Reuptake Inhibitor (SSNRI)</li> </ul>	<p>Inhibits the reuptake of both Norepinephrine and Serotonin</p>	<ul style="list-style-type: none"> <li>- Major depression</li> <li>- Anxiety</li> <li>- Panic disorder</li> <li>- OCD</li> <li>- Prophylaxis for migraine headaches.</li> </ul>	<ul style="list-style-type: none"> <li>• Cool and dry place</li> </ul>	<ul style="list-style-type: none"> <li>○ Capsule</li> <li>○ Tablet</li> </ul>	<ul style="list-style-type: none"> <li>○ Effexor</li> <li>○ Effexor XR</li> <li>○ Venlor</li> <li>○ Veniz-XR</li> </ul>
<p><b>Duloxetine</b> Selective Serotonin &amp; Norepinephrine Reuptake Inhibitor (SSNRI)</p>	<p>Inhibits neuronal Serotonin and Norepinephrine reuptake</p>	<ul style="list-style-type: none"> <li>- Major depressive disorder</li> <li>- General anxiety disorder</li> <li>- Management of diabetic peripheral neuropathy, fibromyalgia, chronic musculoskeletal pain, osteo arthritis, chronic lower back pain.</li> </ul>	<ul style="list-style-type: none"> <li>• -20°C</li> <li>• Keep in a cool, dry place, away from direct sunlight and moisture.</li> </ul>	<ul style="list-style-type: none"> <li>○ Capsule</li> <li>○ Tablet</li> </ul>	<ul style="list-style-type: none"> <li>○ Cymbalta</li> <li>○ Drizalma sprinkle</li> <li>○ Irenka</li> <li>○ Yentreve</li> </ul>

<p><b>Sertraline</b></p> <ul style="list-style-type: none"> <li>- Selective Serotonin Reuptake Inhibitor (SSRI)</li> </ul>	<p>Reuptake of serotonin at presynaptic neuronal membrane gets inhibited</p>	<ul style="list-style-type: none"> <li>- Major depressive disorder (MDD)</li> <li>- Social anxiety disorder</li> <li>- Obsessive compulsive disorder (OCD)</li> <li>- Panic disorder</li> <li>- Post-traumatic stress disorder</li> <li>- Premenstrual dysphoric disorder</li> <li>- Binge eating disorder (BED)</li> </ul>	<ul style="list-style-type: none"> <li>• 20-25°C</li> <li>• Keep away from humidity.</li> <li>• Store in polyethylene bottles or foil packs.</li> </ul>	<ul style="list-style-type: none"> <li>○ Tablet</li> <li>○ Oral concentration</li> <li>○ Capsule</li> </ul>	<ul style="list-style-type: none"> <li>○ Zoloft</li> <li>○ Sereneta</li> <li>○ Serline</li> <li>○ Sertel</li> </ul>
<p><b>Citalopram</b></p> <ul style="list-style-type: none"> <li>- Selective Serotonin Reuptake Inhibitor (SSRI)</li> </ul>	<p>Inhibits neuronal Serotonin reuptake</p>	<ul style="list-style-type: none"> <li>- Depression</li> <li>- Anorexia nervosa (AN)</li> <li>- Diabetic neuropathies</li> <li>- MDD</li> <li>- OCD</li> <li>- Panic disorder</li> <li>- PTSD</li> </ul>	<ul style="list-style-type: none"> <li>• Room temperature</li> <li>• Protect from moisture</li> </ul>	<ul style="list-style-type: none"> <li>○ Tablet</li> <li>○ Oral Solution</li> </ul>	<ul style="list-style-type: none"> <li>○ CeleXA</li> <li>○ Ctp</li> <li>○ Citadep</li> <li>○ Celica</li> </ul>
<p><b>Fluvoxamine</b></p> <ul style="list-style-type: none"> <li>- Selective Serotonin Reuptake Inhibitor (SSRI)</li> </ul>	<p>Inhibits neuronal Serotonin reuptake</p>	<ul style="list-style-type: none"> <li>- Obsessive compulsive disorder</li> <li>- Depression</li> </ul>	<p>15-30°C</p>	<ul style="list-style-type: none"> <li>○ Capsule</li> <li>○ Tablet</li> </ul>	<ul style="list-style-type: none"> <li>○ Luvox</li> <li>○ Fluvoxin</li> <li>○ Floxyfral</li> </ul>

<p><b>Escitalopram</b></p> <ul style="list-style-type: none"> <li>- Selective Serotonin Reuptake Inhibitor (SSRI)</li> </ul>	<p>Reuptake of serotonin at presynaptic neuronal membrane gets inhibited</p>	<ul style="list-style-type: none"> <li>- Major depressive disorder</li> <li>- Generalized anxiety disorder</li> <li>- Obsessive compulsive disorder</li> </ul>	<p>Room temperature</p> <p>Store protected from moisture.</p>	<ul style="list-style-type: none"> <li>○ Tablet</li> </ul>	<ul style="list-style-type: none"> <li>○ Ciprallex</li> <li>○ Lexapro</li> <li>○ Esdep</li> </ul>
<p><b>Paroxetine</b></p> <ul style="list-style-type: none"> <li>- Selective Serotonin Reuptake Inhibitor (SSRI)</li> </ul>	<p>Reuptake of serotonin at presynaptic neuronal membrane gets inhibited</p>	<ul style="list-style-type: none"> <li>- Major depressive disorder</li> <li>- Obsessive compulsive disorder</li> <li>- Panic disorder</li> <li>- Social phobia</li> <li>- Premenstrual dysphoric disorder</li> </ul>	<p>15-30°C</p> <p>Store protected from moisture</p>	<ul style="list-style-type: none"> <li>○ Tablet</li> <li>○ Capsule</li> </ul>	<ul style="list-style-type: none"> <li>○ Paxil</li> <li>○ Paxil CR</li> <li>○ Pexeva</li> </ul>