

ANTIPSYCHOTICS



Antipsychotics, also known as **neuroleptics/ mood-altering drugs** are a class of **psychotropic medication** primarily used to manage **psychosis** principally in **schizophrenia** but also in a range of other psychotic disorders.

CLASSIFICATION:

Phenothiazine derivatives:

- Chlorpromazine
- Trifluoperazine

Butyrophenones:

- Haloperidol
- Trifluoperidol

Rauwolfia alkaloids:

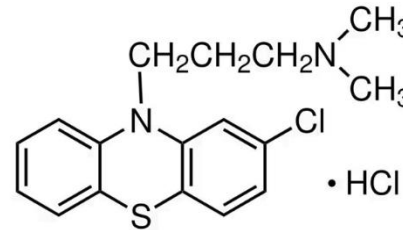
- Reserpine

Diphenyl butyl piperidines:

- Pimozide
- Penfluridol

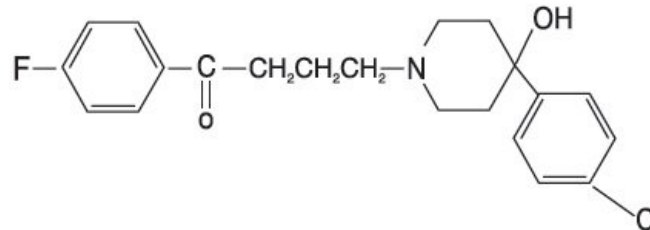
Atypical neuroleptics:

Chlorpromazine



2-Chloro-10-(3-dimethyl amino propyl) phenothiazine

Haloperidol



4-[4-(4-Chlorophenyl)-4-hydroxy-1-piperidinyl]-1-(4-fluorophenyl)-1-butanone

- Lurasidone
- Olanzapine
- Risperidone
- Quetiapine

Indole derivatives:

- Malingole

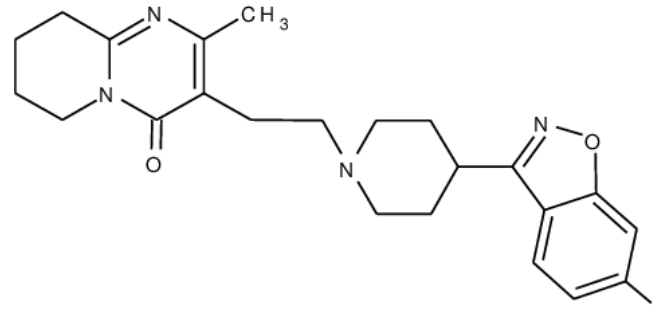
Thioxanthine derivatives:

- Chlorprothixene
- Flupenthixol

Substituted benzamides:

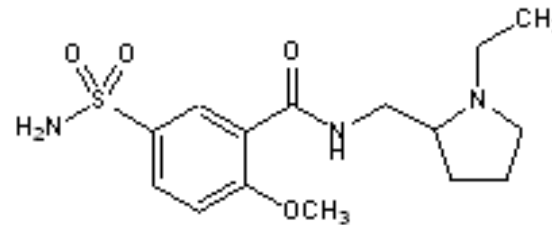
- Sulpirides

Risperidone



3-[2-[4-(6-fluoro-1,2-benzoxazol-3-yl) piperidin-1-yl] ethyl] -2- methyl- 6,7,8,9- tetrahydro pyrido [1,2-a] pyrimidin-4-one

Sulpiride



N-[(1-ethylpyrrolidin-2-yl) methyl]-2-methoxy-5-sulfamoylbenzamide



DRUG	MECHANISM OF ACTION	USES	STORAGE CONDITIONS	TYPES OF FORMULATIONS	BRAND NAMES
Chlorpromazine - Phenothiazine derivative	Blocks post synaptic D ₂ Dopamine receptors	<ul style="list-style-type: none"> - Schizophrenia - Mania and hypomania - Functional or organic psychosis - Severe behavioral problems in children 	<ul style="list-style-type: none"> - Oral solution, tablet, injection: <40°C - Suppositories: 15-30°C - Store in well closed, light resistant containers, protected from moisture. 	<ul style="list-style-type: none"> ○ Injection ○ Oral solution ○ Tablet ○ Elixir ○ Suppository 	<ul style="list-style-type: none"> ○ Ormazine ○ Thorazine ○ Chlorazine ○ Copamide
Haloperidol - Butyrophenone derivative	Antagonizes the action of Glutamic acid in extrapyramidal system	<ul style="list-style-type: none"> - Acute psychosis - Mania and hypomania - Severe anxiety - Hyperactivity - Aggression - Acute delirium - Behavioral disorders in children 	<ul style="list-style-type: none"> - 20-25°C - Store in a well closed container, protected from moisture and light. 	<ul style="list-style-type: none"> ○ Tablet ○ Oral solution ○ Injection ○ Elixir 	<ul style="list-style-type: none"> ○ Haloperidol LA ○ Peridol ○ Halidol ○ Halopidol
Risperidone - Atypical neuroleptic/ Atypical antipsychotic	Inhibits 5-HT _{2A} and D ₂ receptors	<ul style="list-style-type: none"> - Schizophrenia - Mood disorders - Bipolar disorder - Depression with psychosis 	<ul style="list-style-type: none"> - Room temperature - Store in tight, light resistant containers. 	<ul style="list-style-type: none"> ○ Tablet ○ Oral suspension ○ Injection 	<ul style="list-style-type: none"> ○ Risperidol ○ Perseris ○ Risperdal ○ Respidon

Sulpiride - Substituted benzamide	Blocks D ₁ and D ₂ receptors	- Schizophrenia - Constipation - Dyspepsia	- Cool and dry place - Keep away from source of ignition and light	○ Tablet ○ Solution ○ Capsule ○ Syrup	○ Espiride ○ Sulpor ○ Sulpitac
Olanzapine - Atypical neuroleptic - Thieno Benzodiazepine derivative	- Antagonize D ₁ , D ₂ and D ₃ receptors in brain - Blocks 5HT _{2A} , 5HT _{2C} , 5HT ₃ and 5HT ₆ receptors.	- Schizophrenia - Bipolar disorder - Depression	- 20-25°C - Store protected from light and moisture	○ Tablet	○ ZyPREXA ○ ZyPREXA Zydis ○ Olazax
Quetiapine - Atypical neuroleptic	Blocks D ₂ and 5HT _{2A} receptors	- Schizophrenia - Bipolar disorder - Acute depressive episode - Post traumatic stress disorder	- 15-30°C - Store protected from moisture.	○ Tablet ○ Capsule	○ SERO quel ○ SERO quel XR ○ Quel ○ Socalm
Lurasidone - Atypical neuroleptic	Blocks D ₂ and 5HT _{2A} receptors	- Schizophrenia - Depressive episode	Room temperature	○ Tablet	○ Latuda