



SNS COLLEGE OF PHARMACY AND HEALTH SCIENCES

Sathy Main Road, SNS Kalvi Nagar,
Saravanampatti Post, Coimbatore - 641 035,
Tamil Nadu.



HOSPITAL PHARMACY

DEFINITION

Hospital pharmacy is a specialized field of pharmacy that is integrated into the care of a medical center. The profession involves choosing, preparing, storing, compounding and dispensing medications for patients in a medical environment.



FUNCTIONS

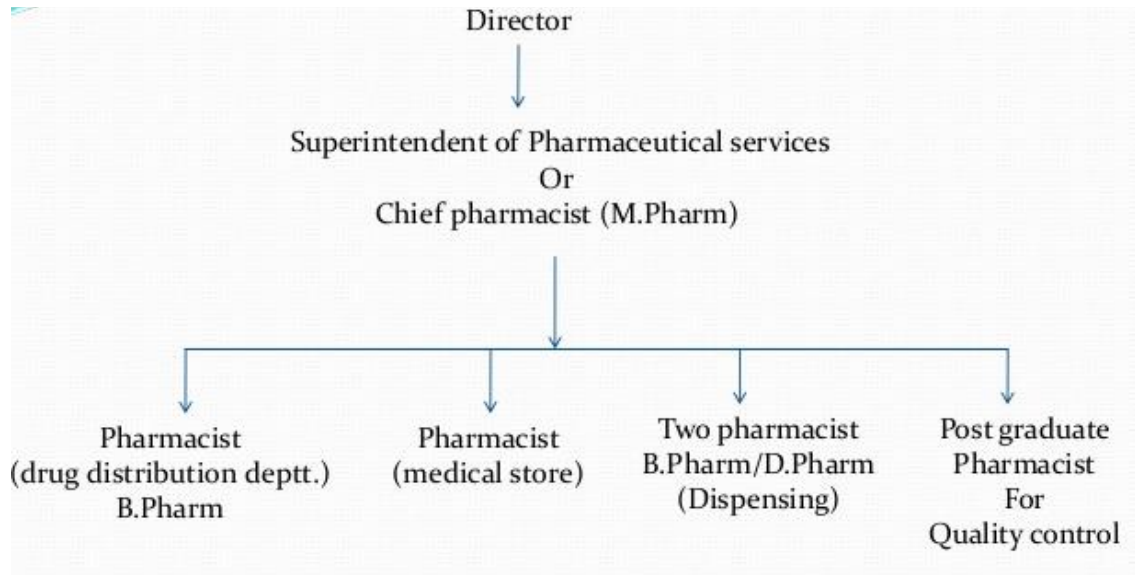
Hospital pharmacists are responsible for,

- Monitoring the supply of all medicines used in the hospital
- In charge of purchasing, manufacturing, dispensing
- Quality testing their medication stock along with help from pharmacy assistants and pharmacy technicians.

OBJECTIVES OF HOSPITAL PHARMACY

- To ensure the availability of right medication, at right time, in the right dose at the minimum possible cost.
- To professionalize the functioning of pharmaceutical services in a hospital.
- To act as a counseling department for medical staff, nurses and for patient.

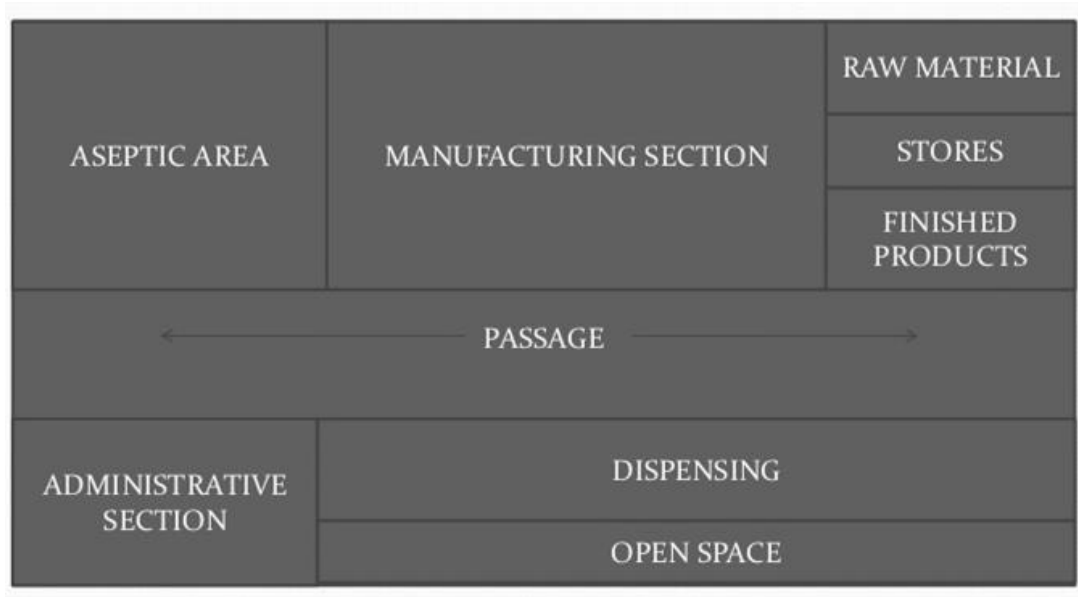
ORGANISATION CHART OF HOSPITAL PHARMACY



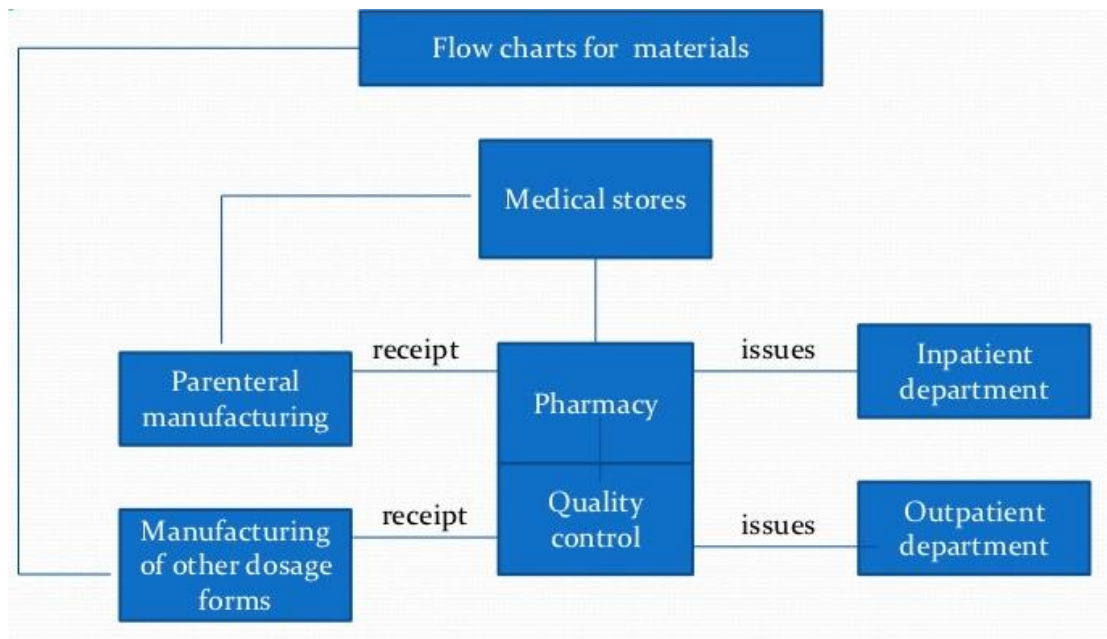
LOCATION OF HOSPITAL PHARMACY

- Located in hospital premises so that patients and staff can easily approach it.
- In multi-storeyed building of a hospital, the pharmacy should be preferably located on ground floor especially the dispensing unit.

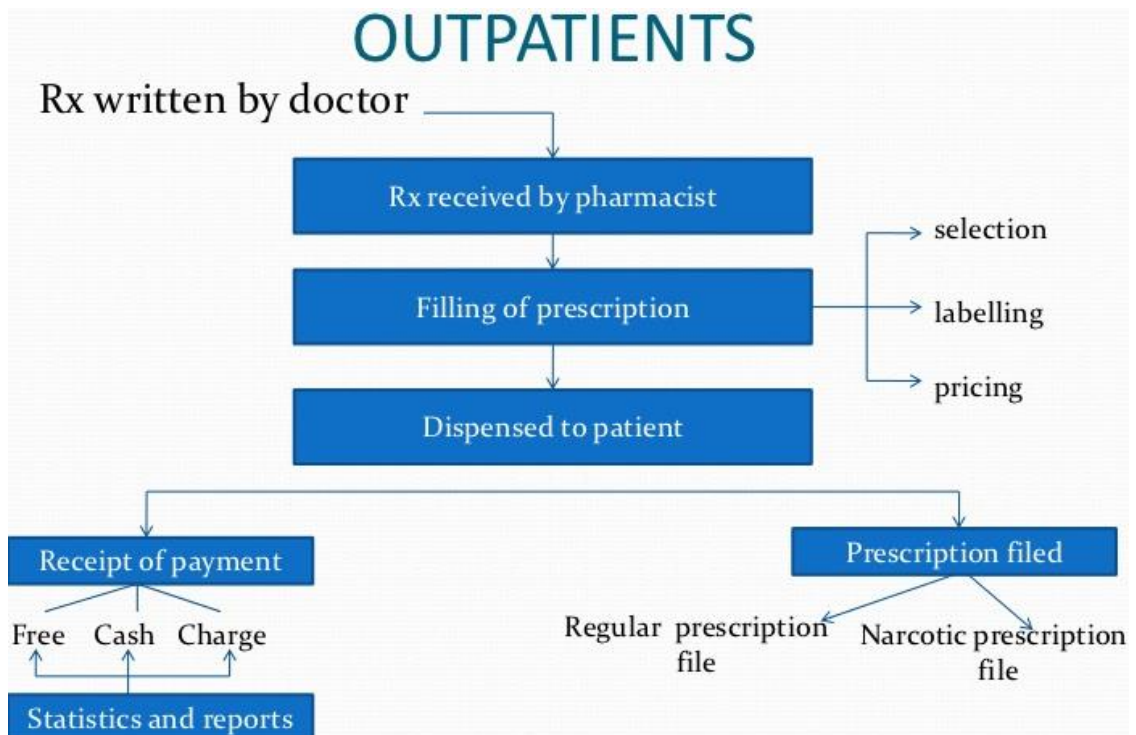
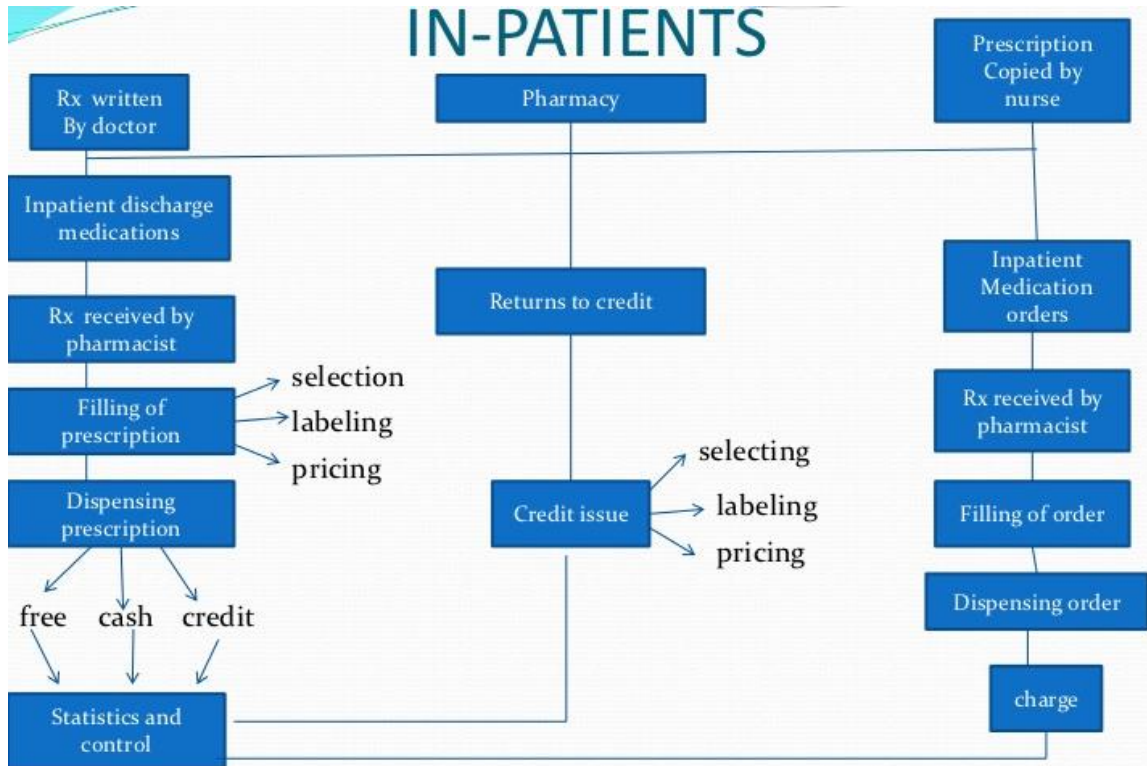
LAYOUT OF HOSPITAL PHARMACY



MOVEMENT OF MATERIALS



MOVEMENT OF PATIENTS



REQUIREMENT OF PHARMACISTS

Bed strength	No of pharmacist required
Upto 50 beds	3
Upto 100 beds	5
Upto 200 beds	8
Upto 300 beds	10
Upto 500 beds	15

ABILITIES OF PHARMACIST

- Excellent communication skills for dealing with patients and health professionals.
- The ability to work carefully, methodically and accurately with medicines and doses - this is vital as mistakes could prove fatal.
- The ability to use scientific knowledge to solve problems.
- IT skills for recording information.
- Interpersonal Skills.
- Management Skills.
- Multitasking skills.
- Patient counseling skill.