



**SNS COLLEGE OF NURSING**  
**Saravanampatti (po), coimbatore.**

**DEPARTMENT OF NURSING**  
**COURSE NAME : BSC (NURSING) II YEAR**  
**SUBJECT : CET**  
**UNIT VII: EDUCATIONAL MEDIA**  
**TOPIC : MODELS**



# MODELS



- These are concrete objects, some of them are larger than the real objects and some of them are small replicas of objects which are too large to be seen as a whole, can be prepared.





# DEFINITION



- It is a recognizable representation of a real thing three dimensionally, that is height, width and depth is felt as reality.





# PURPOSES



- When real objects are too small or too large to bring into the classroom.
- To prevent subject matter involving the past and the future.
- Physical inaccessibility.
- Abstract construction.
- To explain process.



# TYPES OF MODELS



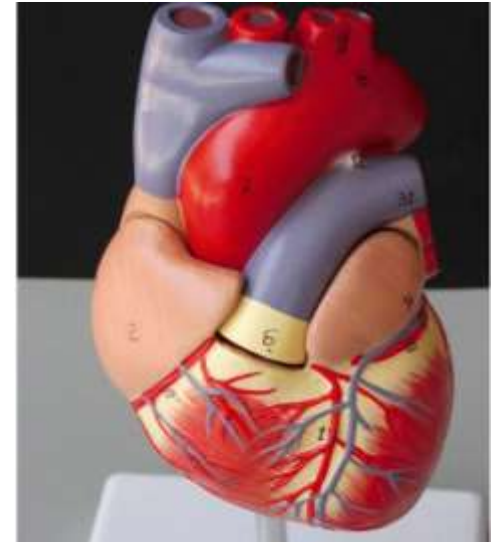
- Solid and simplified
- Scale model
- Cross sectional model
- Sand model
- Working model



# SOILD & SIMPLIFIED



- It is the replica of an original things made with some suitable material like clay, plaster of parise, wood, iron, etc





# SCALE MODELS



- A correct idea of an object can be displayed.

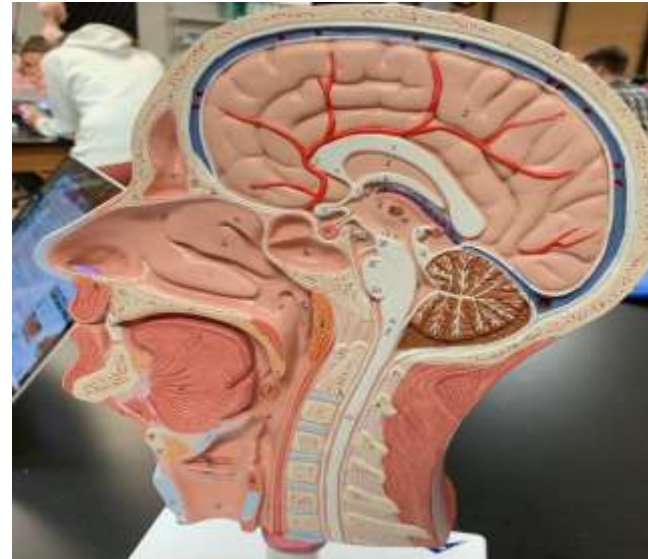




# CROSS SECTIONAL MODELS



- ❖ Inside of an object is visible.
- ❖ Immense value will be observed in science.







# SAND MODEL

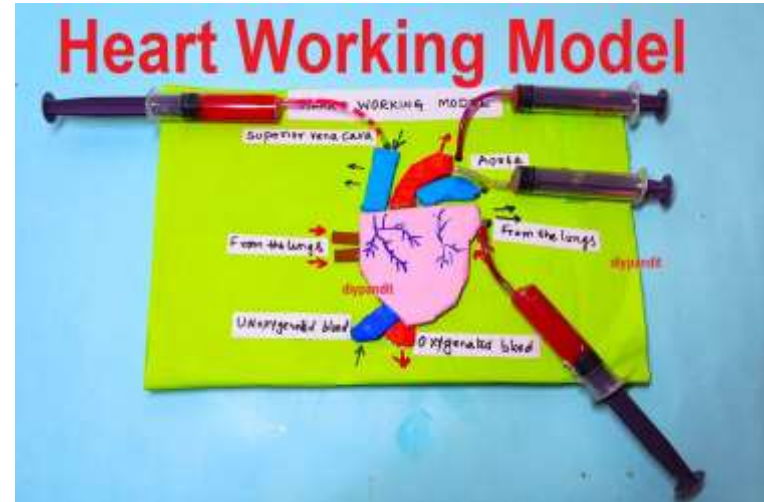


❖ It is made by used sand, clay, saw dust.



# WORKING MODEL

❖ To demonstrate in a simple way of  
an operation or process



# MATERIALS USED

- Cardboard
- Wax
- Plaster of paris
- Wood
- Clay
- Thermocol





# ESSENTIAL QUALITIES



- Accuracy
- Simplicity
- Utility
- Solidity
- Useful



# POINTS TO REMEMBER



- Identifying the purpose of model preparations.
- Being knowledgeable about the model collection of materials
- Proper planning.
- Making with exact measurement.



# ADVANTAGES



- Models help in simulating a real situations.
- The size can be adjusted as needed.
- Stimulate interest and capture attention.
- Models simplifies the complex subject.
- Helps to explain action in real situation.



# DISADVANTAGES



- Models are costly to purchase.
- Needs more storage place.
- Useful for only small group teaching.
- Require skills and talents to prepare models.
- If models are built to scale, time consuming.



# CONCLUSION



Model education refers to a preferred model of education by the teacher to assist the highest level of teaching and retention of information within their students.







# ASSESSMENT



1. What is mean by models?
2. Types of models?
3. Advantages of models?
4. Disadvantages of models?





# REFERENCES



1. B.T. Basavantappas "Nursing Education", first edition, 2003, Jaypee Brothers publication, New Delhi, India.
2. [http://WWW.unesco.org/education/nfsunesco/pdf/LESTAG\\_E.PDF](http://WWW.unesco.org/education/nfsunesco/pdf/LESTAG_E.PDF)



# REFERENCES



3. <http://monroecc.edu/manila/webfiles/pbrunett/audiobookvisual.pdf>

4. <http://wp.lps.org/jholbei/files/2012/03/visual-aids.pdf>

5. Farrant, (1998) ,Principles and Practice of Education, "Essex: LONGMAN .



*Thank  
you*