

Six Essential Features to Include in your Android

App

The following are seven features that your Android app must have.

Most commercial categories, such as social media, messaging, e-commerce, on-demand, and enterprise apps, are dominated by Android apps. Therefore, it's even more crucial for Android app developers to devote all of their attention and focus to adding essential features. They must pay attention to even the smallest aspects since, after all, competition is fierce.

Moreover, mobile app development trends are always evolving, providing opportunities to incorporate fresh and intriguing features that quickly capture the user's attention and are also customer-friendly. There is always the possibility of personalising the features to meet the needs of the business.

- **Interface is simple and easy to use**

Incorporating simplicity with a dash of sophistication in the user interface is the first crucial element in [Android app development](#). It must be assured that the app's functioning is user-friendly, meaning that anybody, including those without prior knowledge of smartphones, can use it easily.

It would help if you kept in mind that most users acquire an opinion about an Android app after a few minutes of using it. Hence, it is preferable to simplify the user interface design and focus on it while designing the wireframes.

The app will be successful if users can access the required page with only a few taps and without waiting too long. Creating a shortcut for crucial functions is advantageous.

With shifting trends, gesture control has become a key game feature, allowing app developers to create blocks and incorporate additional functions. That eventually leads to an improved user experience.

- **Putting the Enterprise App Features into Action**

Enterprise [Android app development](#) has accelerated in recent years, and because it provides numerous venerable benefits, businesses are steadily expressing their interest in it.

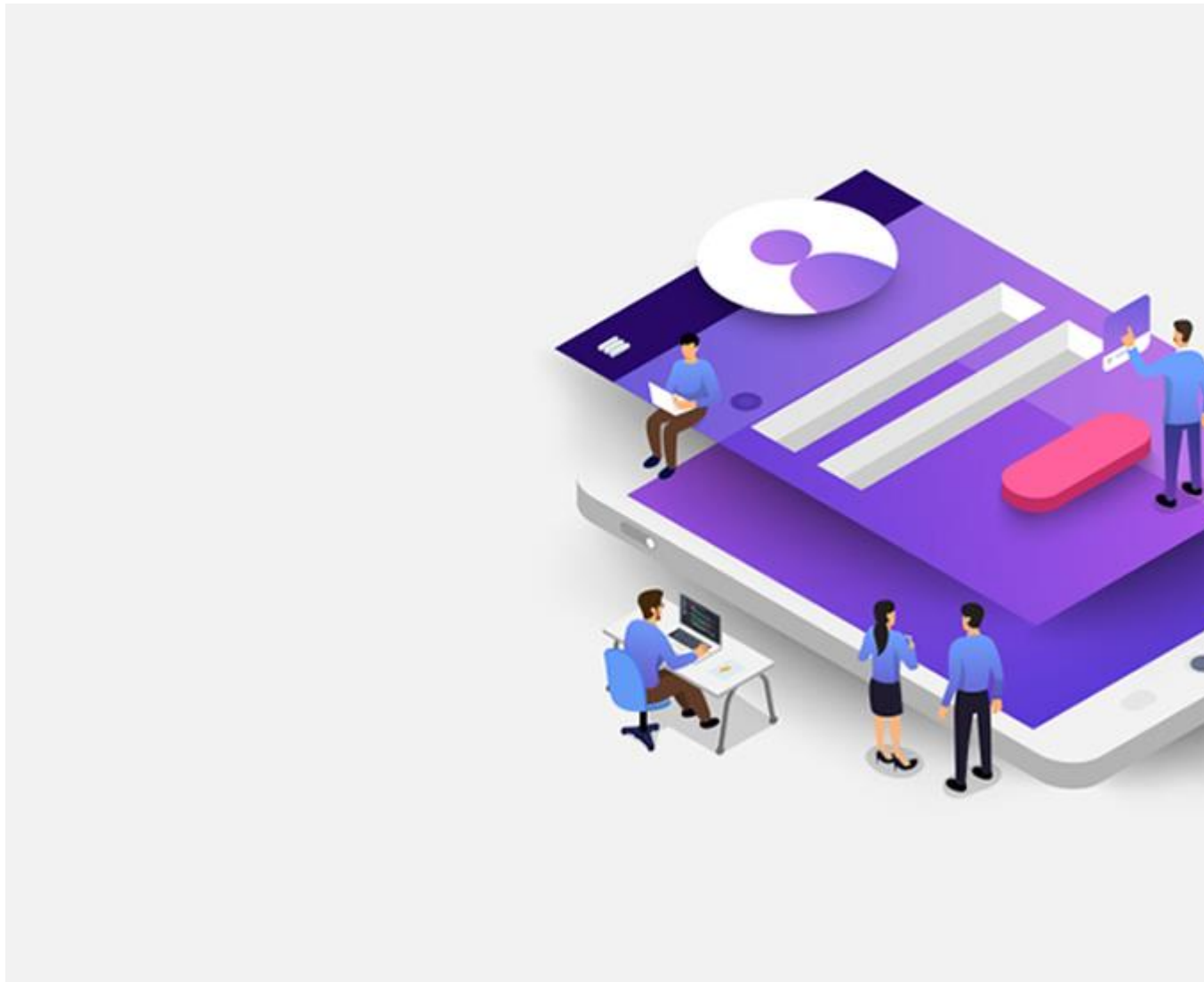
One of the most significant advantages is that it streamlines the company process by boosting communication between employees and different teams. Second, it focuses on offering strong security, ensuring your data is secure.

The workplace apps also have a messaging or chat-based component that allows employees to engage easily with one another. CRM, ERP, and SAP connections are among the extra functionalities available in corporate apps.

- **The registration or login page should be easy.**

Most mobile applications require users to register using their email addresses and phone numbers. If it is an on-demand Android app, they may be prompted to build a personal profile that allows the owner to gather vital data.

You must, however, ensure that the registration page is simple and brief. Longer forms and superfluous inquiries may anger users. You should include the name, phone number, email address, and if required, the address.



- **The User Feedback Area**

User feedback is one of the most important aspects of your mobile application, determining if your brand is a hit or flop. Let and encourage more users to provide critical feedback on your android app through comments or ratings.

The more comments you receive from your potential audience, the more opportunities you will have to improve your app's functionality. Regularly evaluating the performance of your Android app is an essential aspect of the work. Indeed, this is a lovely and helpful gesture from the app's owner and creator, demonstrating his concern for the users.

- **Rapid loading speed**

One of the primary reasons that most mobile applications fail to make an impression in the market is their poor loading time. Users appreciate apps that respond quickly. Therefore, when considering features during the development of your Android app, keep this at the top of your priority list.

It must be verified that the loading time of your programme does not exceed 10 seconds and should not exceed 15 seconds. It should also be highly responsive, with all functionality working properly when tapped at any time of day.

- **The key is to keep it compact.**

Users frequently need more memory space, which prevents them from storing important data. You are responsible for handling this typical problem while designing the Android app.

As a result, you may reduce or condense the size of the app, much to the satisfaction of your viewers. The larger the program, the more space it takes and the longer it takes to download or update.

Note that each update expands the app's size as you add new features and functions to serve your clients better. You should remove any functions that are no longer required in the application.