



SNS COLLEGE OF ENGINEERING

Kurumbapalayam (Po), Coimbatore – 641 107

AN AUTONOMOUS INSTITUTION

Approved by AICTE, New Delhi and Affiliated to Anna University, Chennai

VI Semester

B.E-Electrical & Electronics Engineering

19EE605 – PROTECTION AND SWITCHGEAR



Unit No. & Name : 01 & PROTECTION SCHEMES

Topic Name : Introduction to Protection Schemes

Duration: 10 min

No. of Questions 04

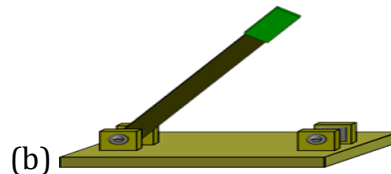
1. The main function of a fuse is to

K1

- (a) protect the line
- (b) open the circuit
- (c) protect the appliance
- (d) prevent excessive currents
- (e) none of the above

2. Under faulty condition circuit will behave? Is A? or is B? or is A&B ?

K1

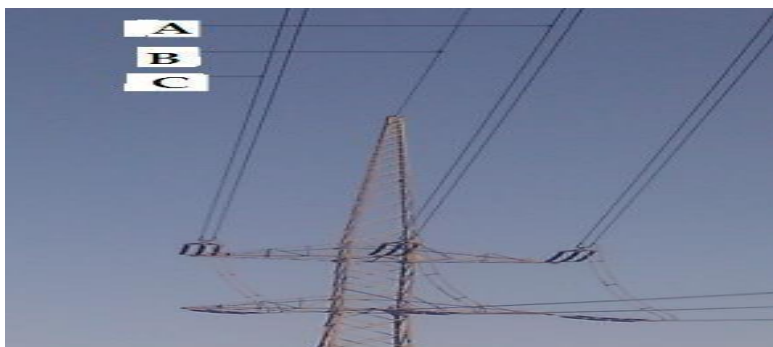


3. Ground wire potential is..?

K1

- (a) Positive potential (b) Zero potential (c) Negative potential (d) 210v

4. Which one is ground wire..? (a) A (b) B (c) C



K2