



SNS COLLEGE OF ENGINEERING

Kurumbapalayam(Po), Coimbatore – 641 107



DEPARTMENT OF ELECTRICAL & ELECTRONICS ENGINEERING

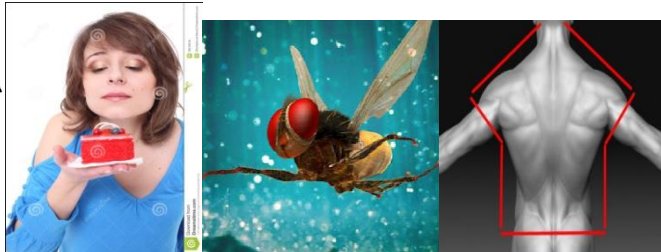
UNIT II: ELECTRICAL MACHINES

1. Identify the motor used in the working of this machine



2. -----of a DC motor is the induced emf in the armature conductors due to the rotation of armature in magnetic field.

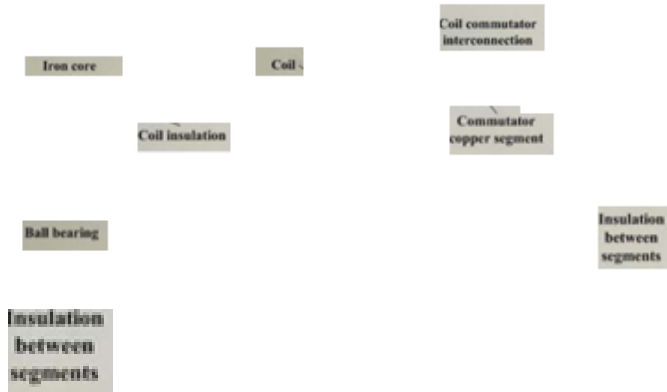
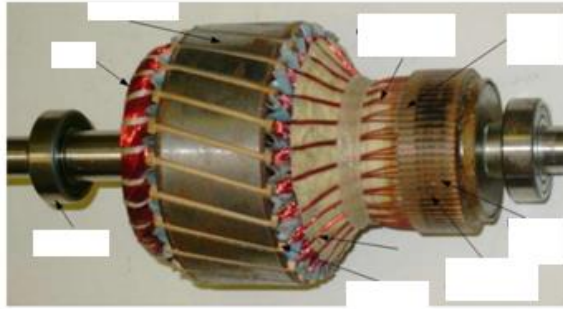
F



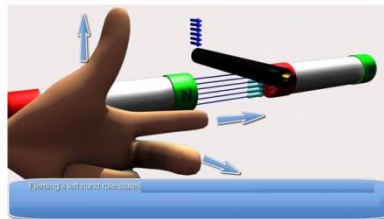
3. Name the kind of DC Motor Used in the applications



4. Identify the parts and name the component



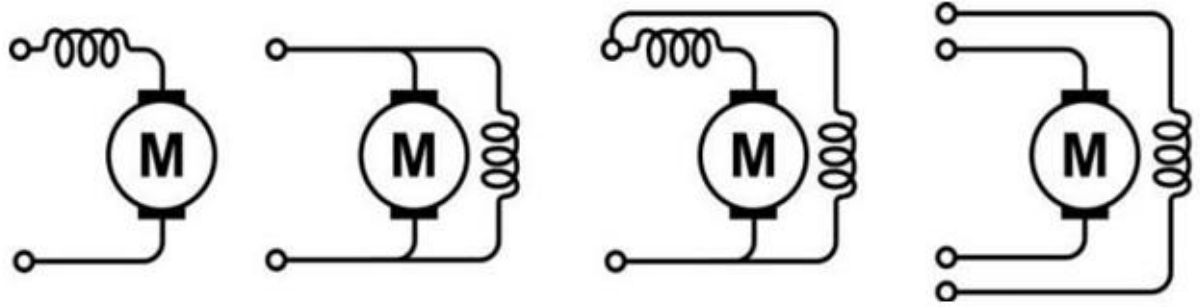
5. Complete the rule



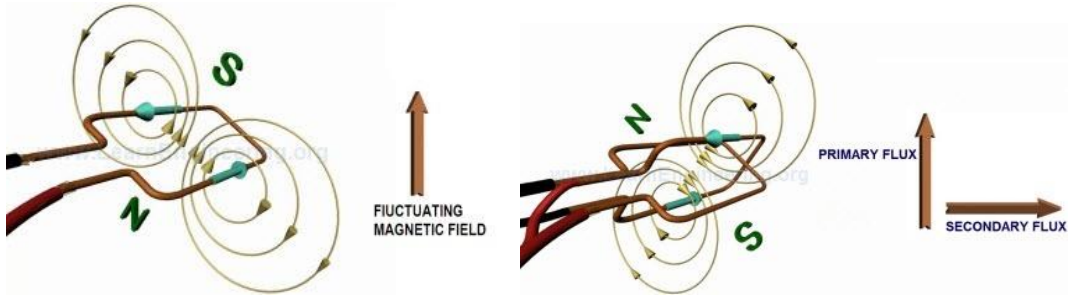
6. Pick the odd man out (Electromagnetic Induction)



7. Name the Types of DC Machines



8. Associate the pictures and comment about the idea behind the theory

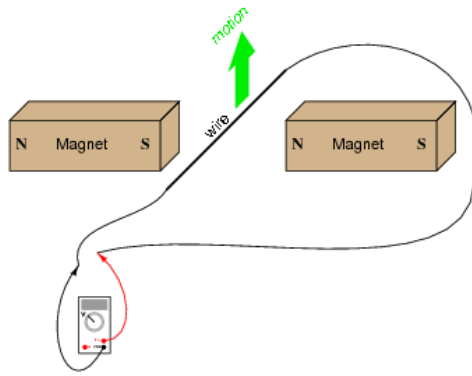


9. Find the words

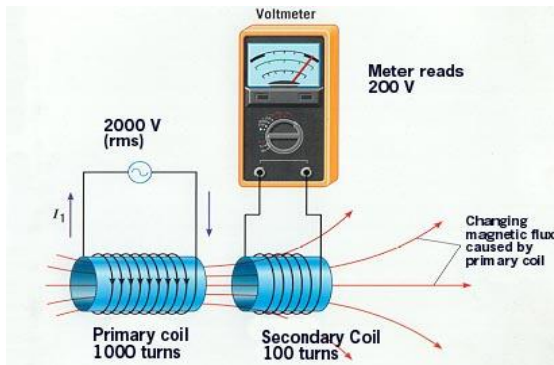
D	M	E	R	Y	G	H
R	U	O	A	W	E	J
E	I	I	T	E	N	Y
A	O	T	S	O	E	T
M	N	G	A	R	R	I
L	B	I	A	S	A	E
T	S	H	U	N	T	U
H	E	P	L	C	O	P
K	R	A	E	M	R	O
P	I	N	O	E	I	I
O	E	G	P	C	D	E
A	S	E	M	B	A	S

- a) Generator
- b) Motor
- c) Speed
- d) Series
- e) Shunt

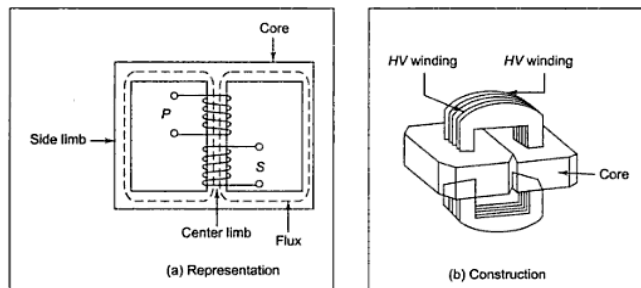
10. What is the direction of current?



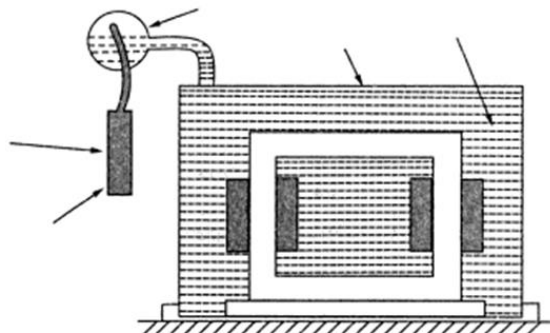
10. Name the principle of operation in the picture given



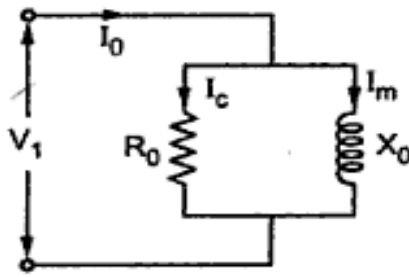
11. Both the pictures are associated. What is their type of Construction



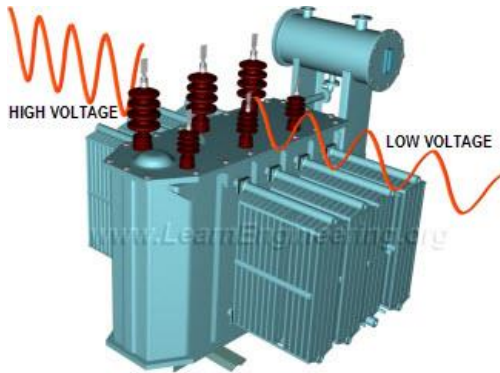
12. Identify the parts



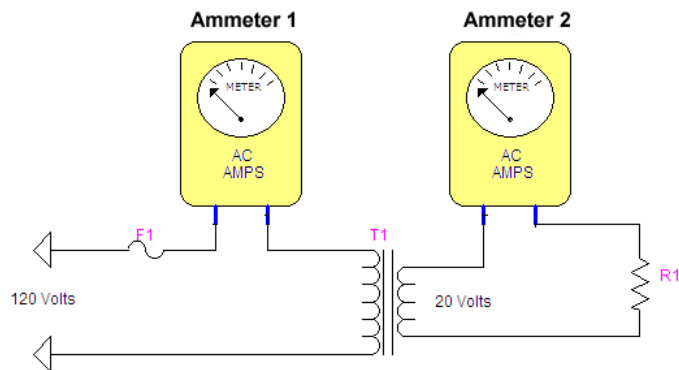
13. The diagram represents----- circuit of transformer



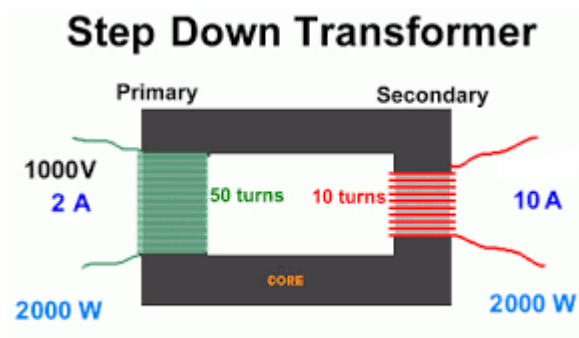
14. From the picture identify the type of transformer



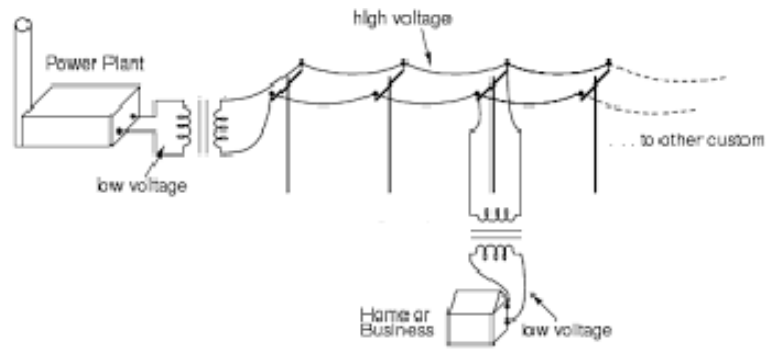
15. Which side of the circuit will read higher current?



16. What should be the value of Voltage on the secondary side of transformer



17. Find the transformers present in the picture and name the type to be used in each place.



18. Associate the pictures and identify the equipment that has only one single voltage winding which is common to both sides.

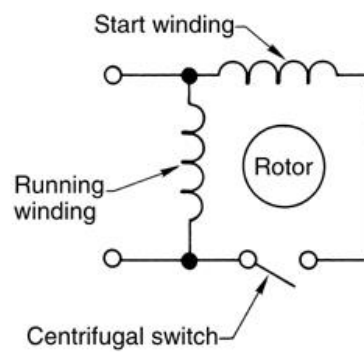


19. From the picture identify the word (Both the pictures gives the same word)

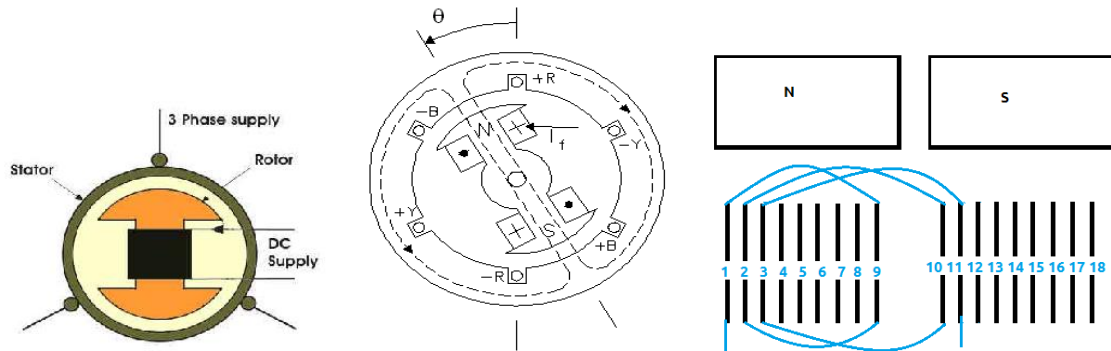


-O-T A-E R- - U-A-I- N

20. Identify the type of Start of Single phase induction motor



21. Name the machine which are not self starting, and it can operate under any electrical power factor. This makes it being used in electrical power factor improvement.



22. Identify the type of motor

