



SNS COLLEGE OF ENGINEERING

Kurumbapalayam (Po), Coimbatore – 641 107



An Autonomous Institution

Accredited by NBA – AICTE and Accredited by NAAC – UGC with 'A' Grade
Approved by AICTE, New Delhi & Affiliated to Anna University, Chennai

DEPARTMENT OF COMPUTER SCIENCE AND TECHNOLOGY

COURSE NAME : 19CS731-SOCIAL NETWORK ANALYSIS

III YEAR /V SEMESTER

Unit 1- INTRODUCTION

Topic 1 : Introduction to Semantic Web



Recall previous topic





Secure | https://www.google.co.in/search?q=paris+photos&rlz=1C1NHXL_enIN699IN699&espv=2&biw=1366&bih=662&source=lnr

Google cs6010 social network analysis Sign in

All Images Videos News Maps More Settings Tools

About 317 results (0.25 seconds)

CS6010 SOCIAL NETWORK ANALYSIS syllabus | AULibrary | Anna ...
www.aulibrary.com/annaforum/blog/tag/cs6010-social-network-analysis-syllabus/
Tag Archives: CS6010 SOCIAL NETWORK ANALYSIS syllabus. CS6010 SOCIAL NETWORK ANALYSIS syllabus - AU - CSE Syllabus. CS6010 SOCIAL ...

CS6010 SOCIAL NETWORK ANALYSIS SYLLABUS FOR 8TH SEM ...
studentsblog100.blogspot.com/2016/06/cs6010-social-network-analysis-syllabus.html
Emergence of the Social Web - Social Network analysis: Development of Social Network Analysis - Key concepts and measures in network analysis - Electronic ...

CSE Notes : CS6010 Social Network Analysis Syllabus and Notes
csenotescorner.blogspot.com/2017/01/cs6010-social-network-analysis-syllabus.html
Jan 5, 2017 - CS6010 Social Network Analysis Syllabus and Notes ... Labels: C6010SocialNetworkAnalysisnotes, CS6010 sna lecturer notes, cs6010 sna ...

CS6010 Social Network Analysis - Bookdha
bookdha.com/CS6010%20Social%20Network%20Analysis.html
Karku Kapatark Kamaval Katranle. So learn that you may full and faultless learning gain. Nirka



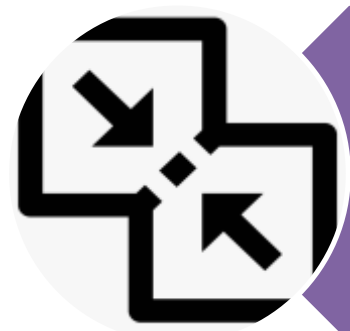
1.2 Limitations of the current Web



Finding relevant information



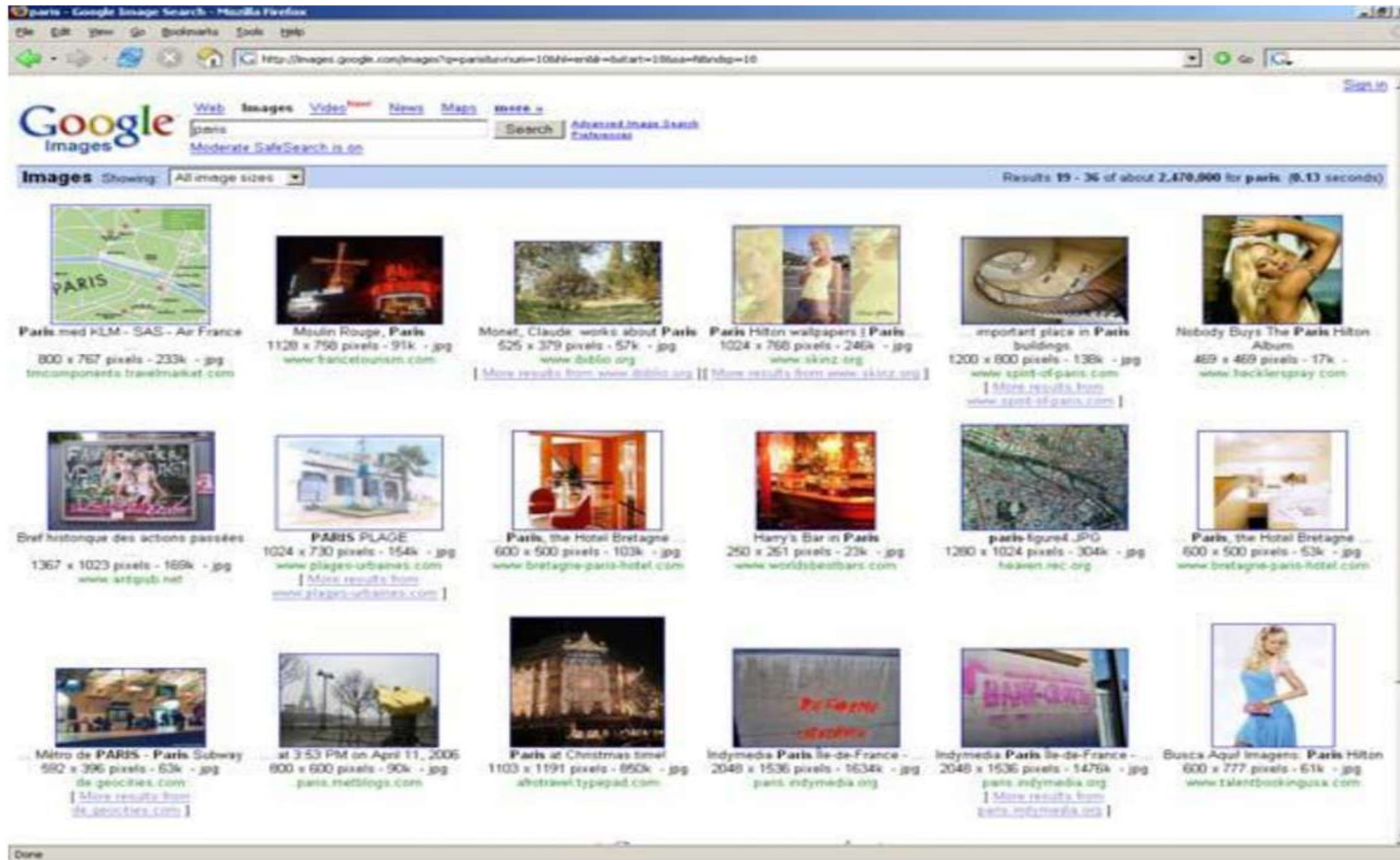
Extracting relevant information
The current Web has its
limitations



Combining and reusing
information



- From the top ten results only three are related to the social network analysis.
- The word CS6010 means a number of things, which is known as is polysemous.
- Search engines are thus programmed in such a way that the first page shows a diversity of the most relevant links related to the keyword.
- It allows the user to quickly realize the ambiguity of the query and to make it more specific.





- The search engine fails to discriminate two categories of images:
 - i. Related to the city of Paris
 - ii. Showing Paris Hilton
 - iii. Rest are about clouds, people, signs, diagrams etc
- Half of the photos on the first page, a quarter of the photos on the second page and a fifth on the third page are directly related to concept of Paris.



Problems:

- Associating photos with keywords is a much more difficult task than simply looking for keywords in the texts of documents.
- Automatic image recognition is currently a largely unsolved research problem.
- Search engines attempt to understand the meaning of the image solely from its context.



Evaluation

- Why is Semantic Web used in current system?
- What is the purpose of Semantic Web?
- What is the main function of semantic web?
- Why is Semantic Web so useful for the development of web?



REFERENCES



1. Dion Goh and Schubert Foo ,Social information retrieval systems:Emerging technologies and applications for searching the web effectively,IGI Global snippet,2008

THANK YOU