

**SNS COLLEGE OF ALLIED HEALTH SCIENCE**  
Affiliated to The Tamil Nadu Dr. M.G.R Medical University, Chennai



**DEPARTMENT OF PHYSICIAN ASSISTANT**

**COURSE NAME : PHARMACOLOGY**

**UNIT : CLASSIFICATION OF DRUG ACTING ON NERVES**

**TOPIC : SEDATIVES**

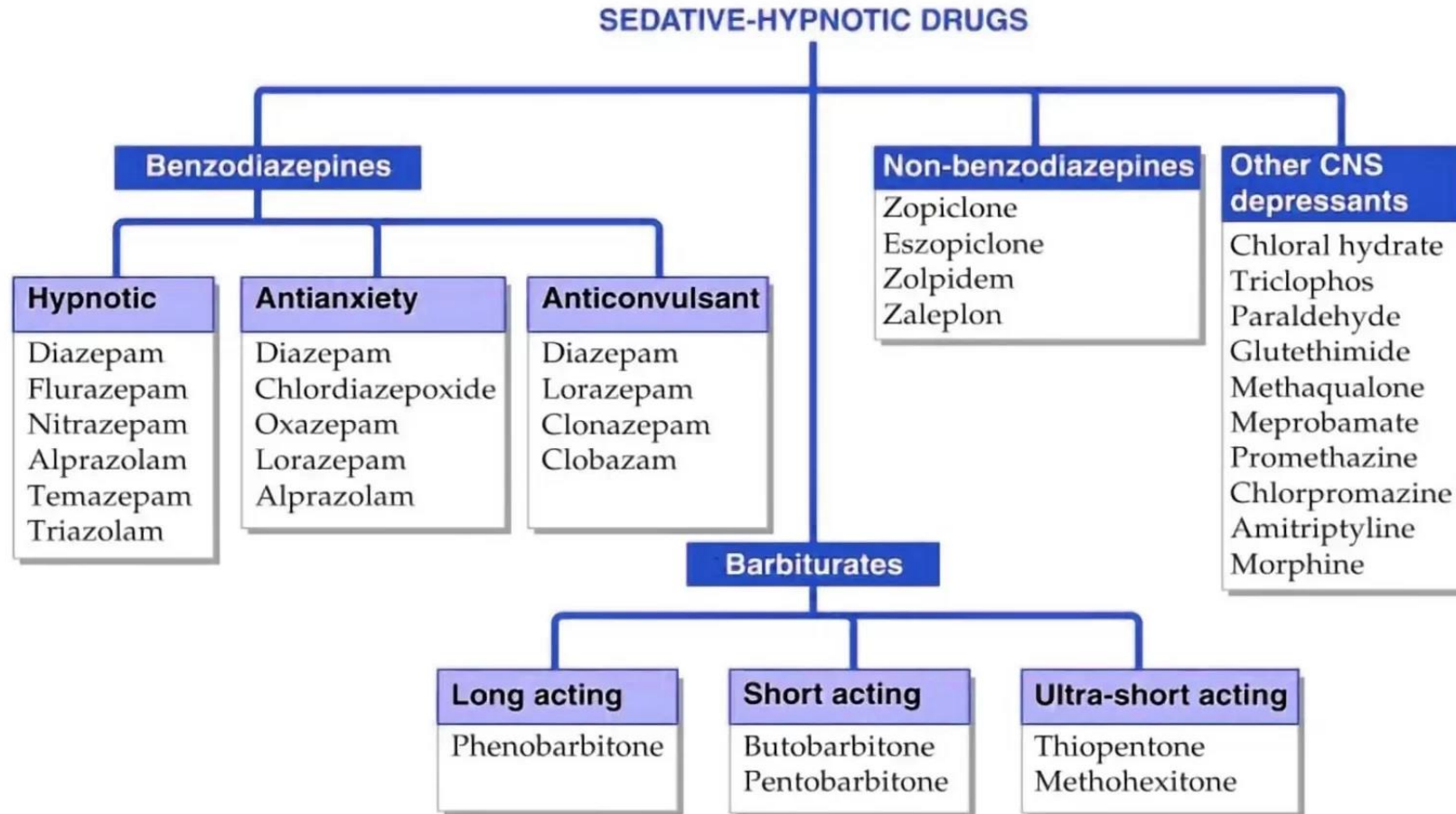
**FACULTY NAME : Ms. SINEKA M**

# INTRODUCTION (Define)

- Sedatives are a class of drugs that **slow down brain activity** to help with anxiety, sleep, and other conditions.
- They are also known as **depressants**.

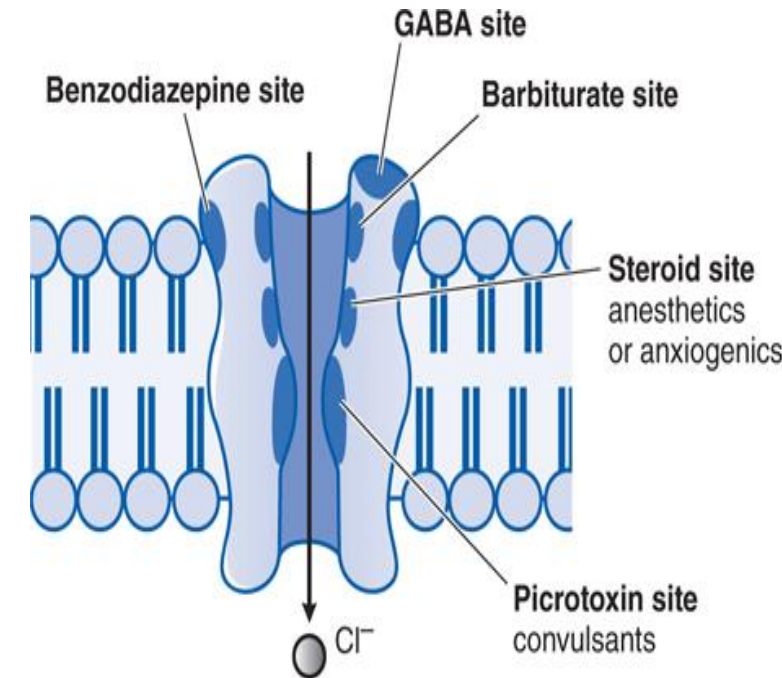


# CLASSIFICATION



# MECHANISM OF ACTION

- **Enhancing GABA activity:** Enhances effects of the inhibitory neurotransmitter GABA, leading to decreased brain activity and relaxation or sedation.
- **Blocking histamine receptors:** Antihistamines block histamine receptors that reduce alertness and promote sedation.



# PHARMACODYNAMICS

- **Anxiolysis:** Reducing anxiety and stress
- **Hypnosis:** Inducing sleep or relaxation
- **Muscle relaxation:** Reducing muscle tension
- **Anticonvulsant activity:** Some sedatives have anticonvulsant properties



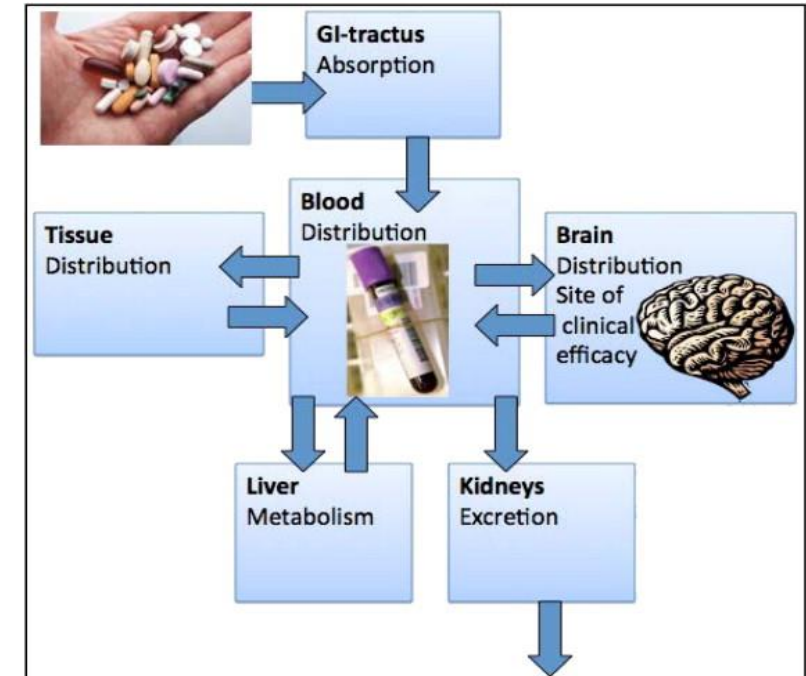
# PHARMACOKINETICS

❑ **Absorption:** Gastrointestinal tract

❑ **Distribution:** Tissue distribution

❑ **Metabolism:** Hepatic metabolism

❑ **Elimination:** Renal excretion



# INDICATIONS (Empathy)

- ✓ Anxiety Disorders
- ✓ Insomnia
- ✓ Seizures
- ✓ Panic Disorders
- ✓ Bipolar Disorder



- ✓ Preoperative and Procedural Sedation
- ✓ Alcohol Withdrawal
- ✓ Muscle Spasms
- ✓ Post-traumatic Stress Disorder
- ✓ Pain Relief





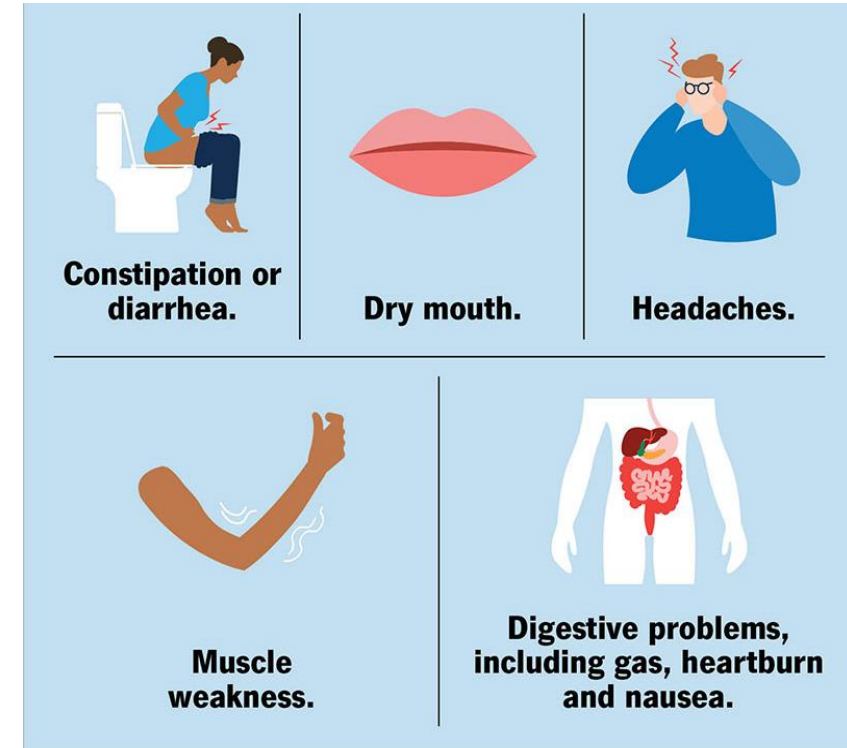
# CONTRAINDICATIONS

- ✓ Substance use disorders
- ✓ Pregnancy
- ✓ Breastfeeding
- ✓ Dementia
- ✓ Hypersensitivity
- ✓ Narrow-angle glaucoma
- ✓ Respiratory depression
- ✓ Myasthenia gravis



# ADVERSE EFFECTS

- Difficulty focusing or thinking
- Memory problems
- Reduced pain perception
- Low blood pressure
- Slowed breathing



- Drowsiness and sleepiness
- Dizziness and lightheadedness
- Blurred vision
- Slurred speech
- Impaired coordination and reflexes



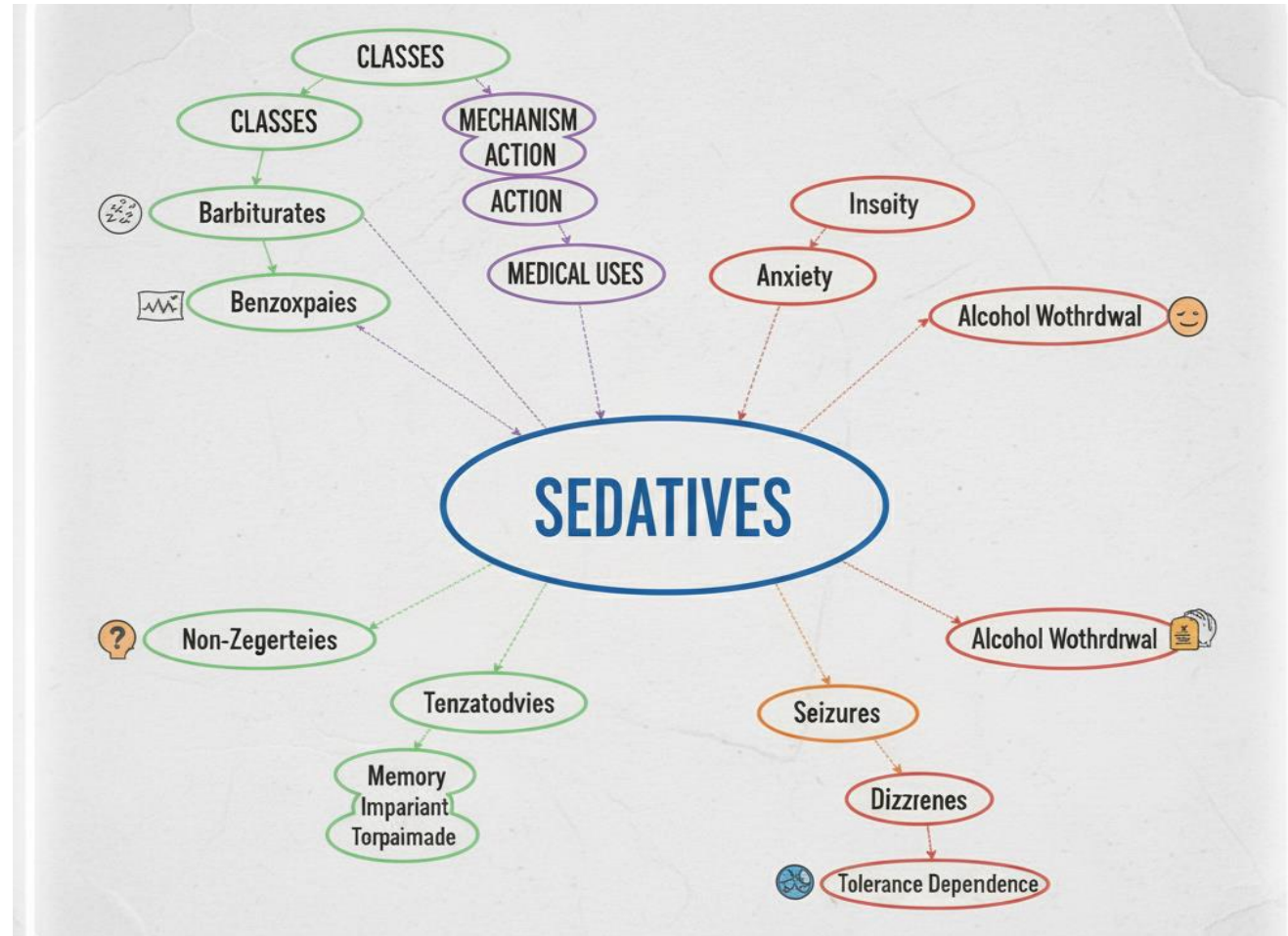
# PHYSICIAN ASSISTANT ROLE (Test)

## Continuously assessing a patient's

- Vital signs
- Level of consciousness
- Response to stimuli to ensure safety and optimize sedation depth during procedures.



# SUMMARY



# References

- Medical Pharmacology – Padmaja Udayakumar
- <https://my.clevelandclinic.org/health/treatments/24880-sedative>
- <https://www.news-medical.net/health/List-of-Sedatives.aspx>
- <https://www.healthline.com/health/sedatives>