

Topic: HEMATOLOGY**Reasoning Puzzle****Case Scenario :**

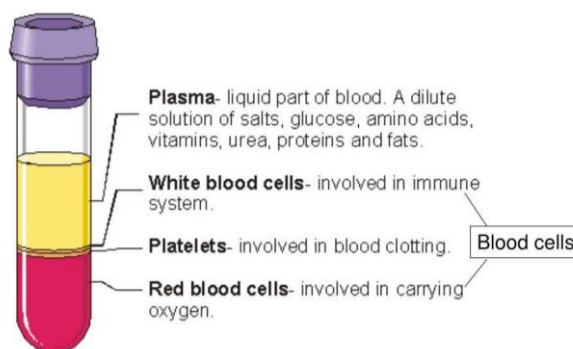
You are a radiology intern at City Hospital, assisting in the imaging department. A patient arrives with symptoms of fatigue, shortness of breath, and pale skin. The doctor suspects a blood-related disorder and orders a complete blood count (CBC) and imaging scans. Your task is to analyze the blood composition and understand the functions of blood elements to assist in diagnosis. To prepare, you must solve a series of puzzles that test your knowledge of hematology, focusing on red blood cells (RBCs), white blood cells (WBCs), platelets, and plasma

Description: You are given data on four blood components: RBCs, WBCs, platelets, and plasma. Each has a unique function, but the descriptions are jumbled.

Task: Use logical reasoning to match each component to its correct function.

Clues:

- One component transports oxygen.
- One component fights infection.
- One component aids clotting.
- One component carries nutrients and hormones. **Question:** Assign the correct function to each blood component (RBCs, WBCs, platelets, plasma).

Image:

Rubrics	Marks Alloted (out of 10 marks)
Accuracy of Knowledge	4
Logical Reasoning and Application	3
Completeness and Creativity	3
TOTAL MARKS	10 marks