

SNS COLLEGE OF ALLIED HEALTH SCIENCE
Affiliated to The Tamil Nadu Dr. M.G.R Medical University, Chennai



DEPARTMENT OF PHYSICIAN ASSISTANT

COURSE NAME : SURGERY

UNIT : INTRODUCTION TO SURGERY

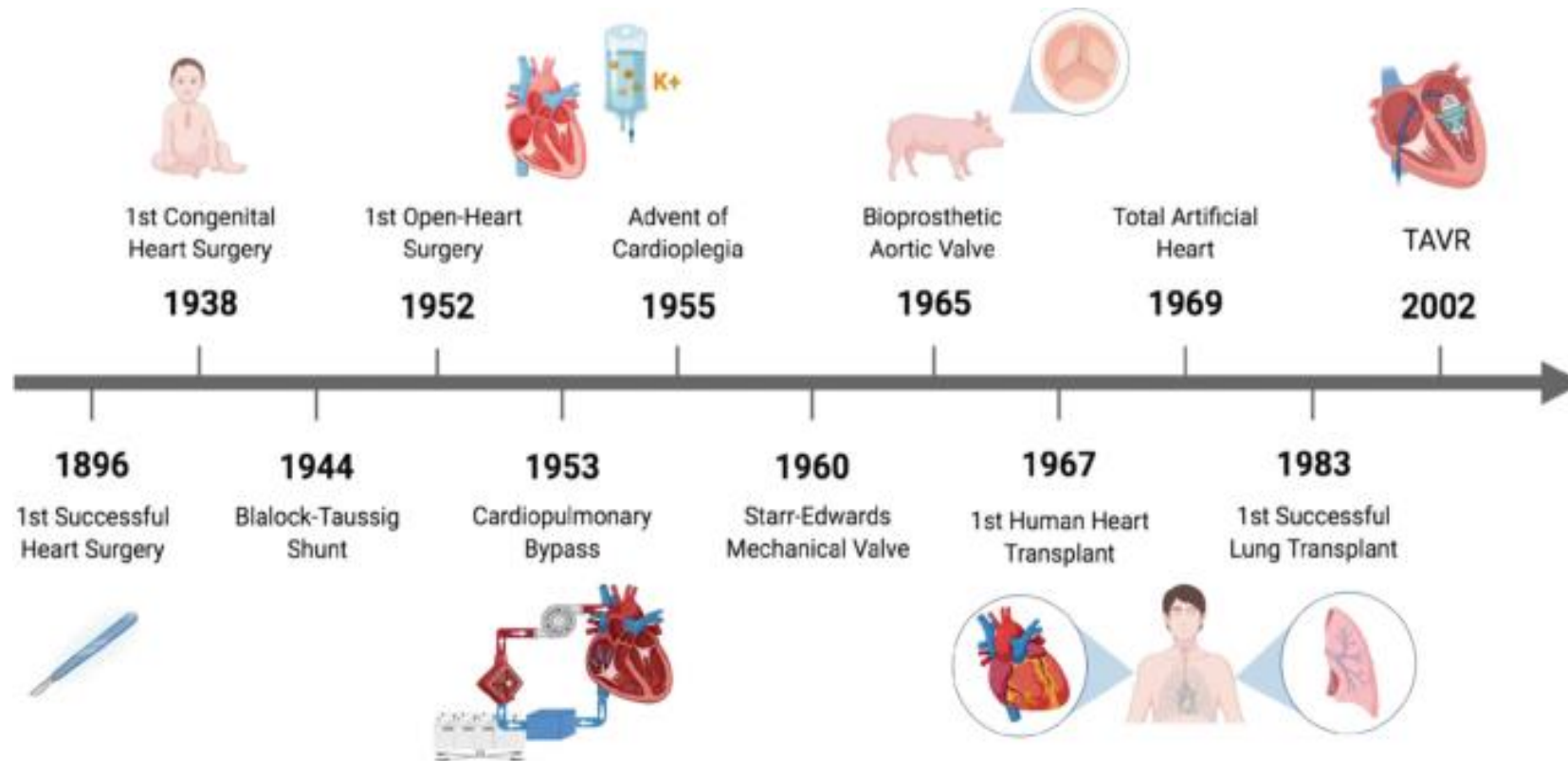
**TOPICS : HISTORY OF SURGERY, ROLE OF SURGEON, IMPORTANCE OF TEAM
WORK, STRESSES ARISING DURING OPERATIVE PROCEDURE**

FACULTY NAME : Ms. SINEKA M

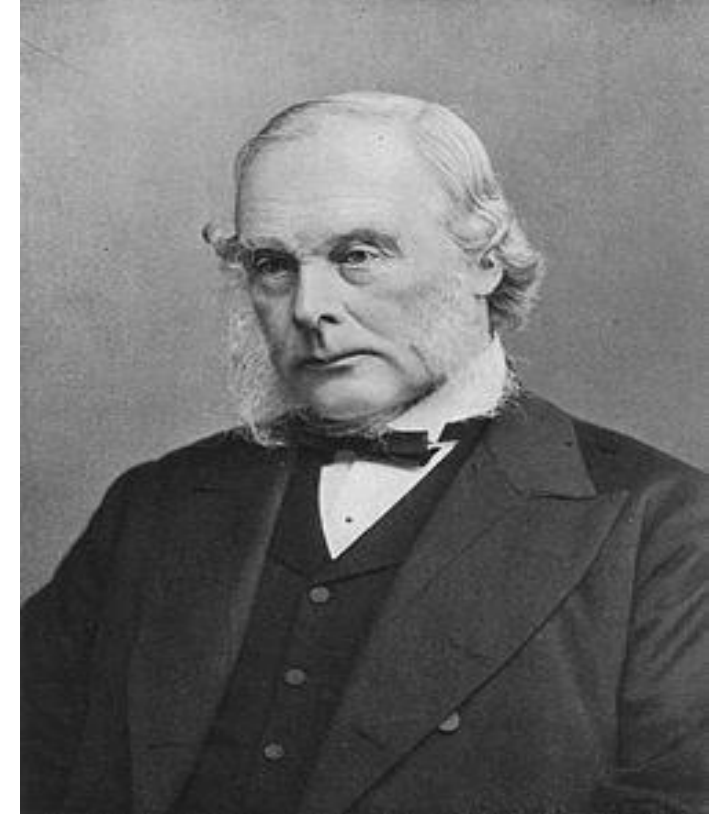
HISTORY OF SURGERY (Define)

- Surgery has a long, transformative history, evolving from rudimentary practices like ancient trepanation to highly sophisticated modern procedures.





- Its history features critical milestones such as the introduction of antiseptics by **Joseph Lister** in the **19th century**, anesthesia with ether,
- And the development of **organ transplantation** and minimally invasive techniques in the **20th century**.



ROLE OF THE SURGEON (Empathy)

- The surgeon leads operative care with responsibilities such as :
- Patient evaluation and Operative planning
- Precision execution of the procedure
- Decision-making under pressure



Stereotypical Surgeon Personality

Decisive

Well Organized

Practical

Hard Working



Cantankerous

Dominant

Arrogant

Hostile

Egocentric

Poor Communicator



- Postoperative management.
- Surgeons must possess deep **anatomical and physiological knowledge, technical skill**, and the ability to adapt to unexpected challenges during surgery.

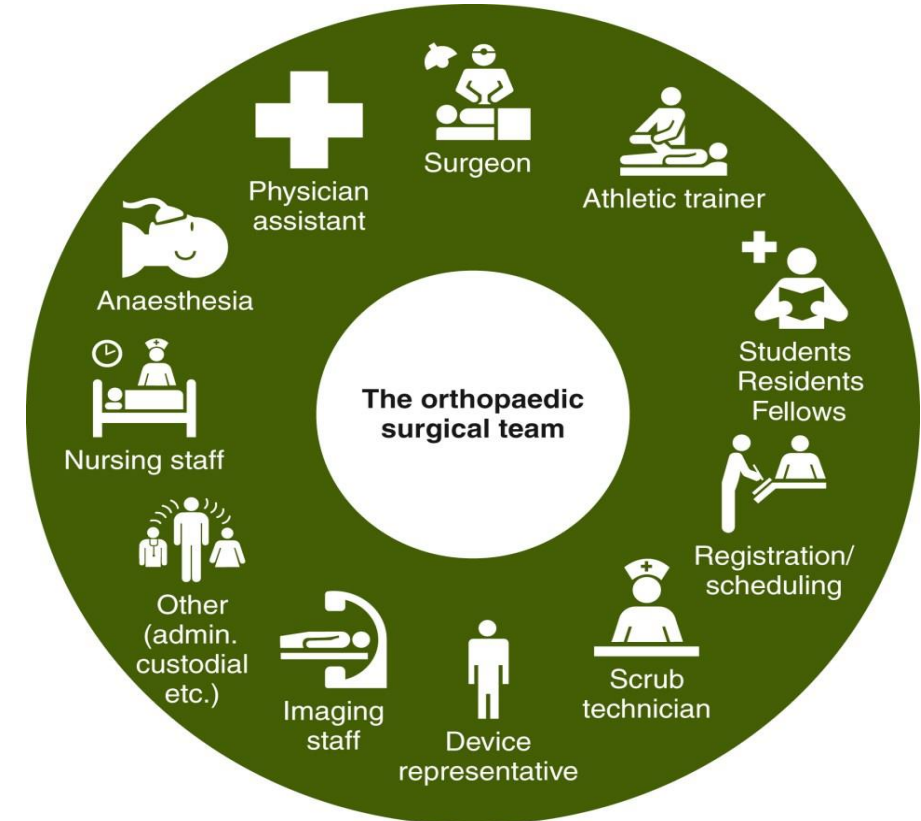


IMPORTANCE OF TEAMWORK (Ideate)

- Surgery is inherently a team-based effort involving anesthesiologists, nurses, surgical technologists, and support staff.
- Effective communication, clear role delineation, and coordination throughout preoperative, intraoperative, and postoperative phases.



- Teamwork helps anticipate equipment needs, manage complications, and maintain sterile environments.



STRESSES DURING OPERATIVE PROCEDURES

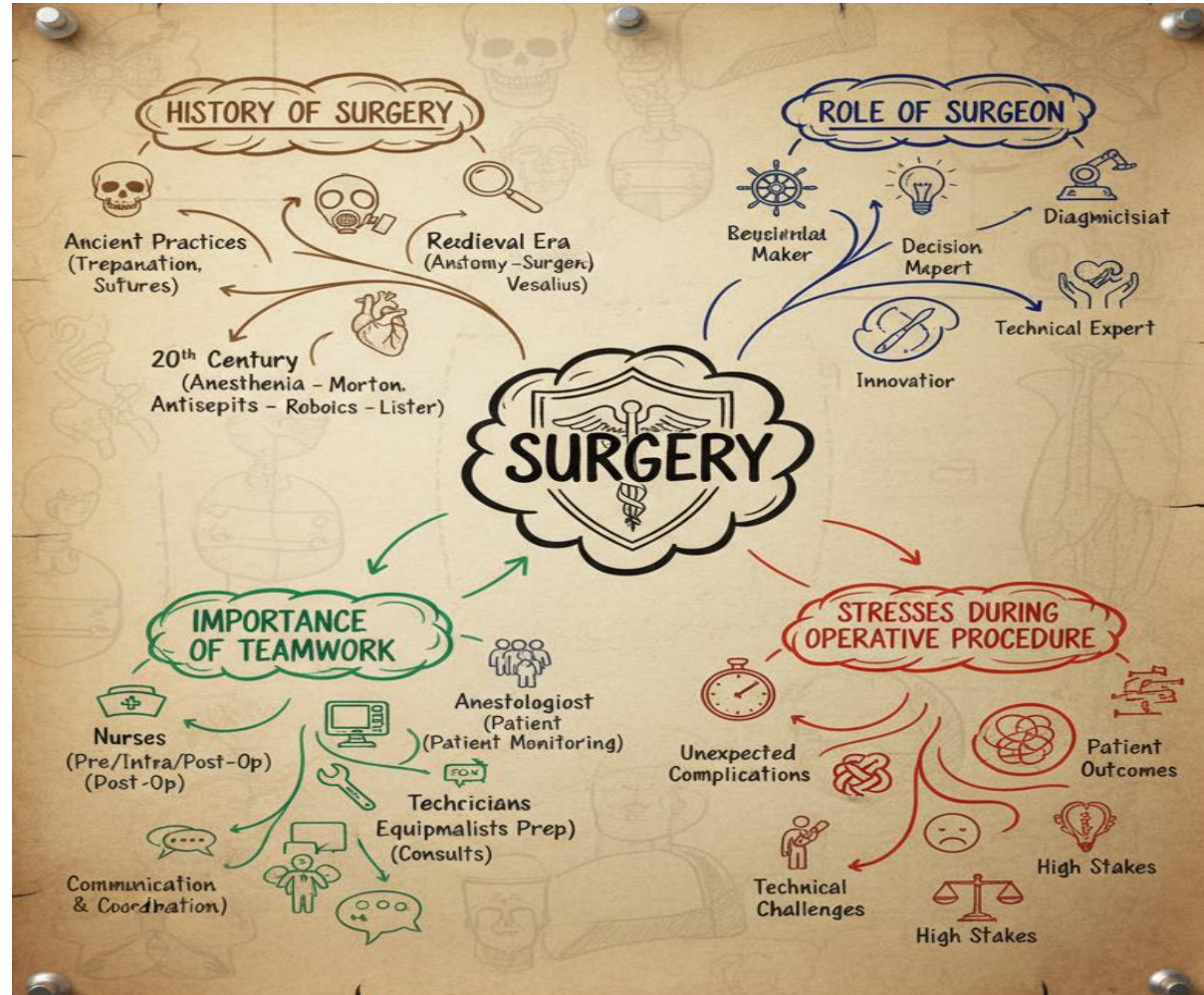
- **Physical:** Fatigue from long procedures, awkward postures, exposure to bright lights and sharp instruments.
- **Psychological:** High responsibility for patient outcomes, decision-making under time constraints, managing unexpected intraoperative events.



- **Environmental:** Noise, interruptions, equipment malfunction, and urgent demands on coordination.
- Effective stress management is vital to maintain focus, reduce errors, and support surgeon well-being.



SUMMARY



References

- Textbook of Surgery - Kailash
- <https://www.verywellhealth.com/the-history-of-surgery-timeline-3157332>
- <https://medschoolinsiders.com/medical-student/meet-the-surgical-team/>
- <https://pmc.ncbi.nlm.nih.gov/articles/PMC3920901/>