



SNS COLLEGE OF ALLIED HEALTH SCIENCES
SNS Kalvi Nagar, Coimbatore - 35
Affiliated to Dr MGR Medical University, Chennai



**DEPARTMENT : OPERATION THEATRE AND
ANAESTHESIA TECHNOLOGY**

COURSE NAME : ANATOMY

UNIT : HEART

**TOPICS : MAJOR BLOOD VESSELS OF HEART,
CORONARY ARTERIES**



MAJOR BLOOD VESSELS OF HEART



Superior Vena Cava (SVC):

Origin:

Formed by the confluence of the left and right brachiocephalic veins.

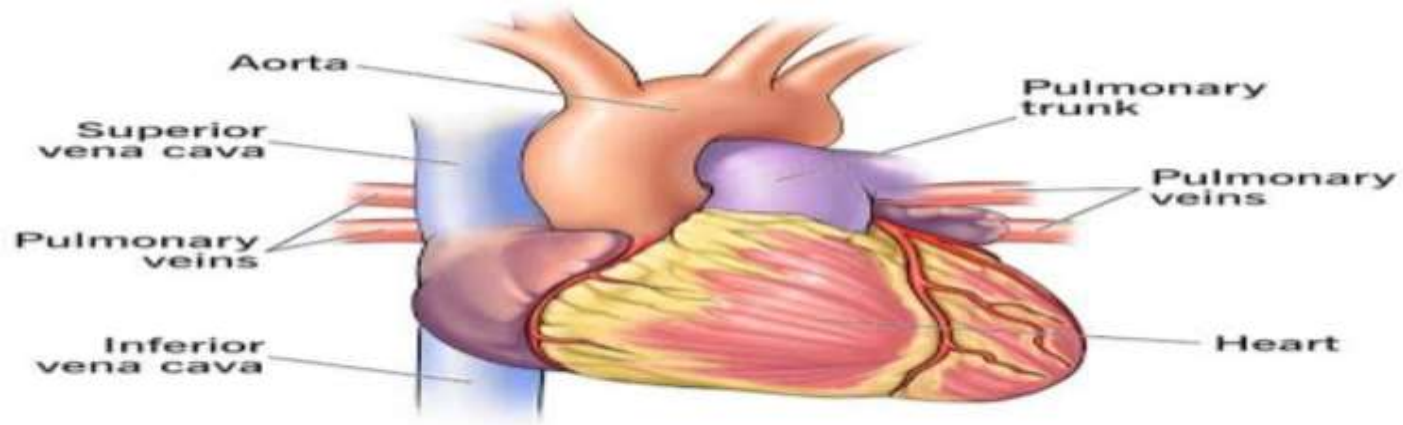
Right brachiocephalic vein is formed by the union of the right subclavian and right internal jugular veins.

Course:

Enters the right atrium from above.

Passes through the superior mediastinum.

Tributaries: Drains blood from the head, neck, upper limbs, and the upper part of the thorax.





Inferior Vena Cava (IVC):

Origin:

Formed by the confluence of the common iliac veins.

Common iliac veins are formed by the union of the internal and external iliac veins.

Course:

Enters the right atrium from below.

Passes through the abdominal and thoracic cavities.

Tributaries: Drains blood from the pelvis, abdominal organs, and lower limbs.



SYSTEMIC CIRCULATION

Aorta:

Ascending Aorta:

Origin:

Arises from the left ventricle.

Course:

Rises superiorly.

Gives off the coronary arteries.



Arch of the Aorta:

Course:

Curved portion.

Gives off the brachiocephalic artery, left common carotid artery, and left subclavian artery.

Descending Aorta:

Thoracic Aorta:

Descends through the thorax.

Abdominal Aorta:

Passes through the abdomen, giving off various branches.



CORONARY ARTERIES



Right Coronary Artery (RCA):

Origin:

Arises from the right aortic sinus.

Branches:

Right Marginal Artery.

Posterior Descending Artery (PDA).

Distribution:

Supplies the right atrium, right ventricle, sinoatrial (SA) and atrioventricular (AV) nodes.



Left Coronary Artery (LCA):

Origin: Arises from the left aortic sinus.

Divisions:

Left Anterior Descending (LAD) Artery:

Course:

Descends in the anterior interventricular sulcus.

Distribution:

Supplies the anterior part of the interventricular septum and portions of the right and left ventricles.



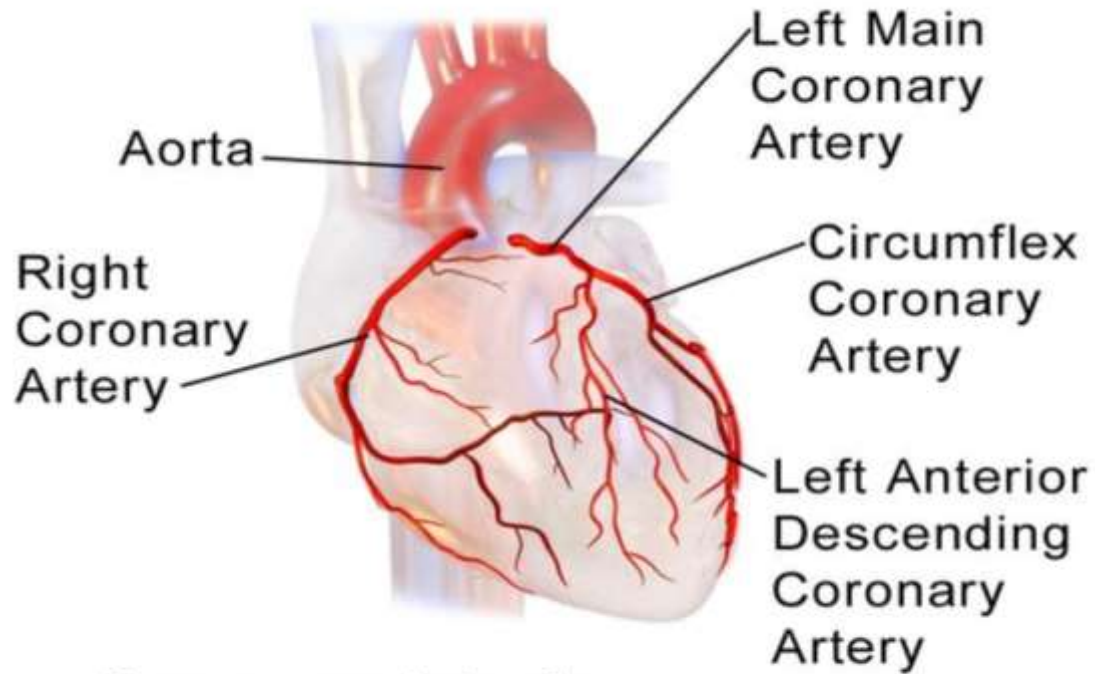
Circumflex Artery:

Course:

Curves around the left side in the coronary sulcus.

Distribution:

Supplies the left atrium and the posterior walls of the left ventricle.



Coronary Arteries



ASSESSMENT



- What all are the Major blood vessels ?
- What is Coronary Artery ?