



**SNS COLLEGE OF ALLIED HEALTH SCIENCES**  
SNS Kalvi Nagar, Coimbatore - 35  
Affiliated to Dr MGR Medical University, Chennai



**DEPARTMENT OF CARDIO PULMONARY PERFUSION CARE**  
**TECHNOLOGY**

**COURSE NAME : GASTROENTEROLOGY**

**3<sup>rd</sup> YEAR**

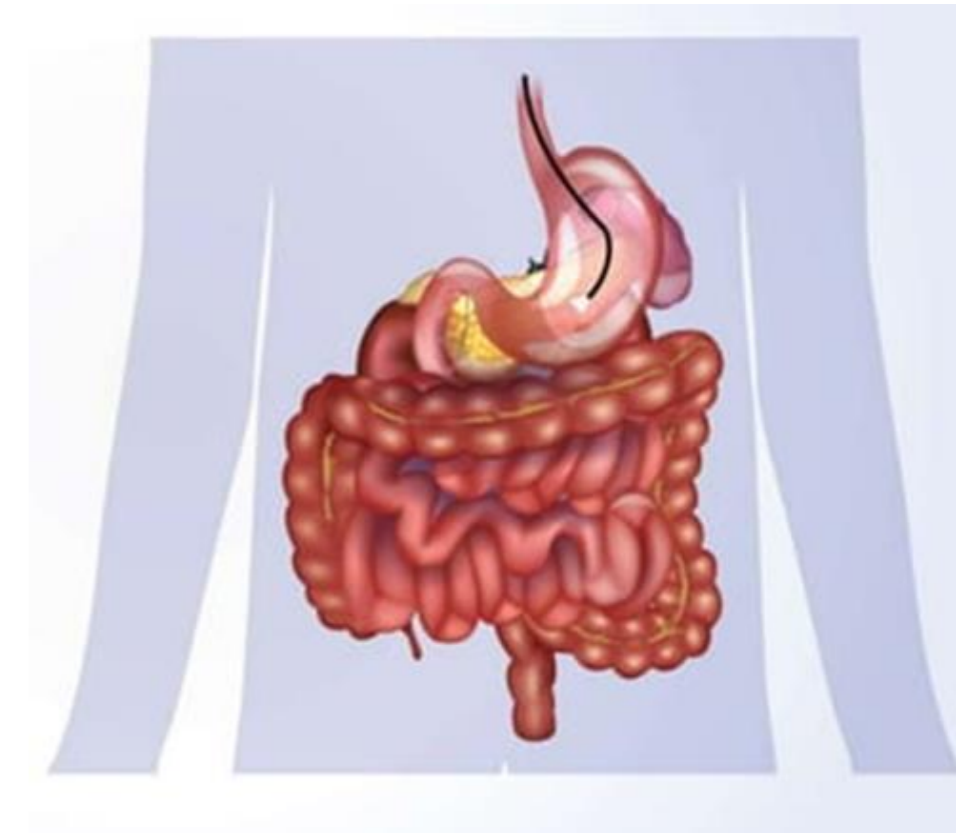
**TOPIC : ENDOSCOPY**



# ENDOSCOPY



- It is a procedure used to view and operate on the **internal organs and vessels of the body**.
- Endoscopy is generally mistaken for the test limited to the digestive system alone.
- However, **endoscopy has a wider scope**.



# TYPES OF ENDOSCOPY

- Based on **the area investigated**, endoscopy can be



Arthroscopy  
for joints



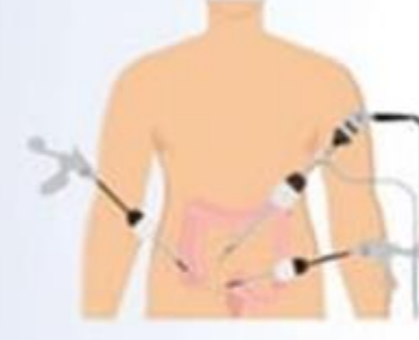
Bronchoscopy  
for lungs



Colonoscopy  
for colon



Upper GI  
endoscopy



Laparoscopy for  
abdomen or pelvis



Hysteroscopy  
for uterus



Cystoscopy for  
bladder



# Why Endoscopy?



- Endoscopy can be used either as a



Diagnostic tool



Surgical tool





# Why Endoscopy?



- Endoscopy is used to **diagnose and treat**:



Source of bleeding



Polyps (group of Abnormal tissues)



Inflammatory Bowel disease



Ulcers



Tumors



# PROCEDURE



- Step – 1

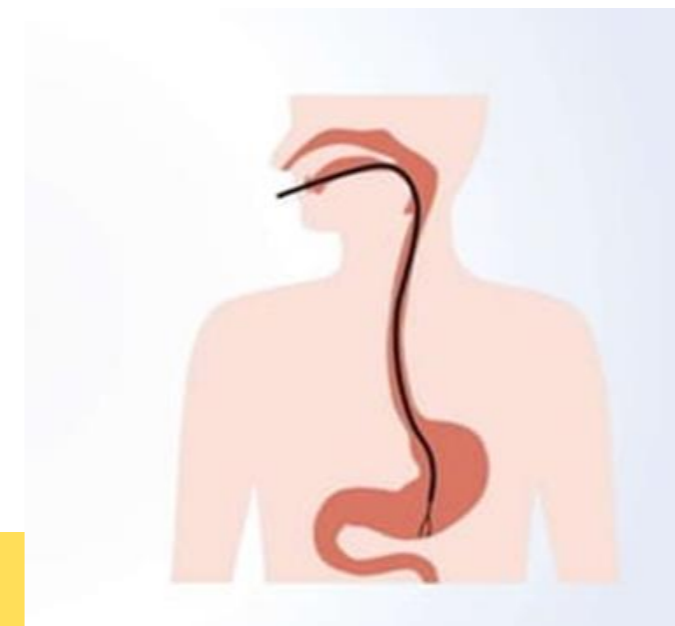
Sedatives are administered

- Step – 2

Surgeon inserts an endoscope to access the target site through a small cut or an opening in the body (nose, mouth or rectum)

- Step – 3

Tissue samples are collected by passing instruments through the tube

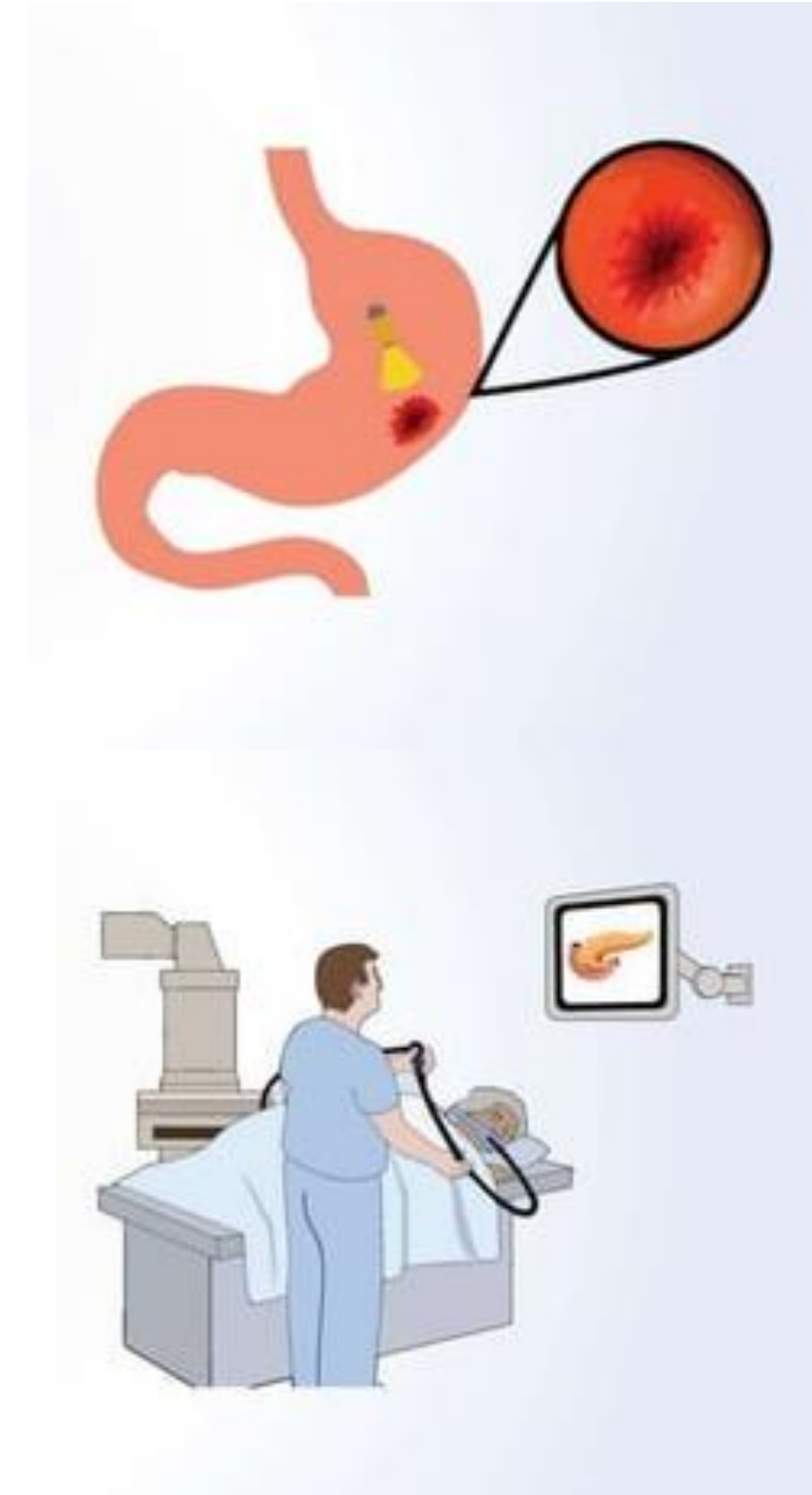




# Latest techniques in endoscopy



- **Capsule endoscopy** - A capsule with tiny camera is swallowed that transmits the images as it passes through
- **Endoscopic retrograde cholangiopancreatography (ERCP)** - Endoscopy and X-ray are combined to treat pancreatic and bile disease

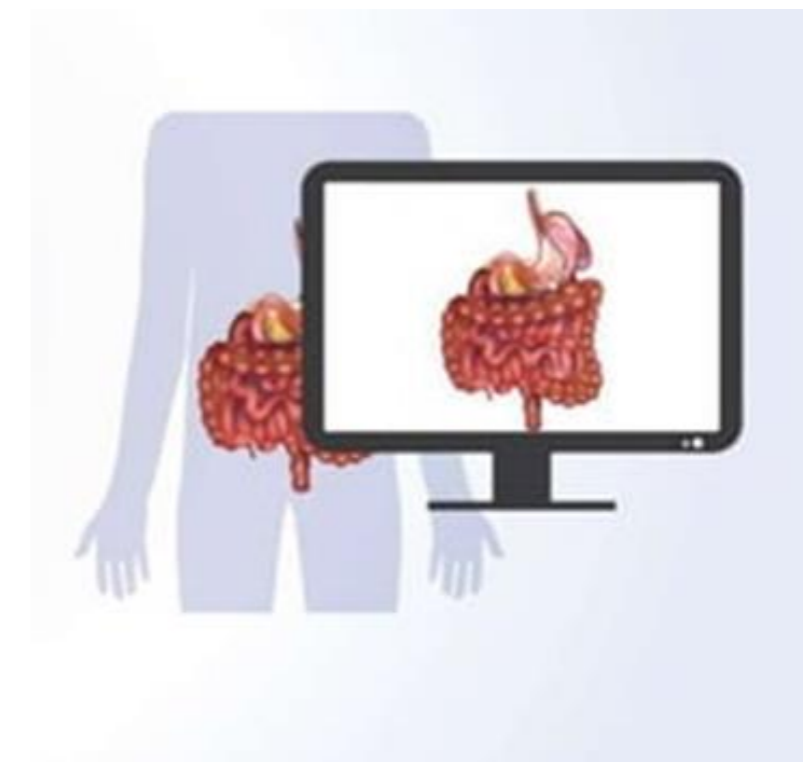




# Latest techniques in endoscopy



- **Chromoendoscopy** - Dyes are installed before endoscopy to identify any lesions.
- **Endoscopic ultrasound** - High frequency sound waves are used to identify the digestive system and lung diseases.
- **Narrow band imaging** - Filtered light is used for better visualization of internal organs.



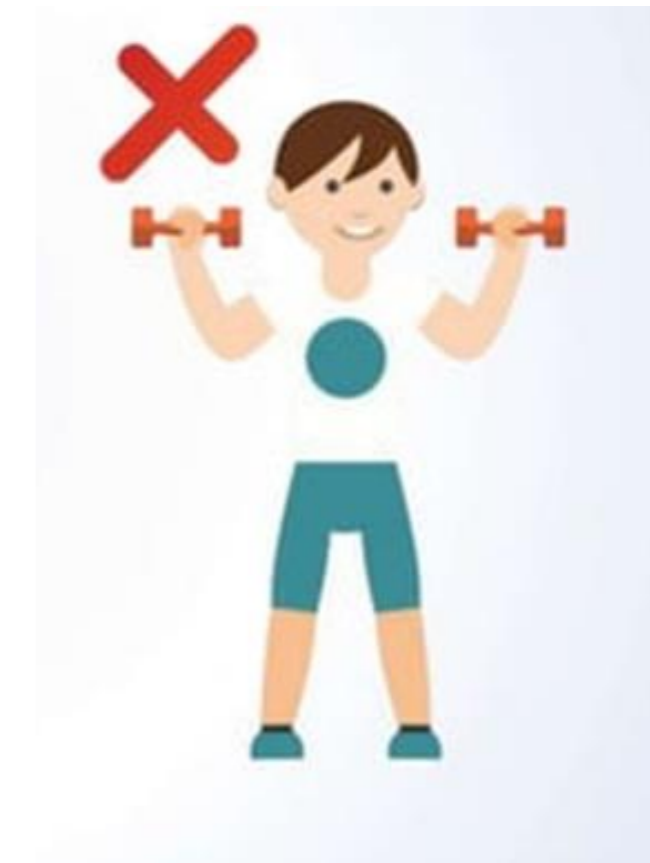




# BEFORE ENDOSCOPY



- You are advised:
  - Not to eat or drink 12 hours before the procedure
  - Avoid strenuous activities.





## AFTER ENDOSCOPY



- It may require some time to feel well enough to go about your daily business.
- **Contact your doctor** If any problem persists.





THANK YOU