

## Parking Methods

The Parking Methods play a major role in controlling traffic and avoid chaotic confusion and traffic jams because of lack of Parking facility.



Parking Lot

**On the basis of the style of Parking Areas, there are two major types of Parking:**

1. On Street Parking
2. Off Street Parking

### **On Street Parking**

As the name itself suggests, “On-street Parking” means the area allotted for Parking purpose at the sides of the roads. For efficiency in Parking system; the On street Parking is divided into two types:

1. Angular Parking
2. Parallel Parking
3. Perpendicular Parking (efficient Parking Method)

### **Parallel Parking System**

The vehicles are parked one behind the other. The Parking lot is designed as per the area required if Parallel Parking is adopted. It has been surveyed that the area required for Parallel Parking is much lesser that required for Angular

Parking. Therefore, more number of vehicles can be parked in this Parking System. For this reason, this Parking system is generally adopted.



Parallel Parking  
**Angular Parking**

The vehicles are parked at an angle. It may be a 30 degree angle or 45 degree. The vehicles can be easily reversed if parked at an angle. Hence, proving as an efficient Parking System in case of vehicular circulation.



**Angular Parking**

The major drawback of “Angular Parking System” is that it requires larger space for parking than required for Parallel Parking. Hence this system is adopted where the space is available in plenty.

### **Perpendicular Parking**

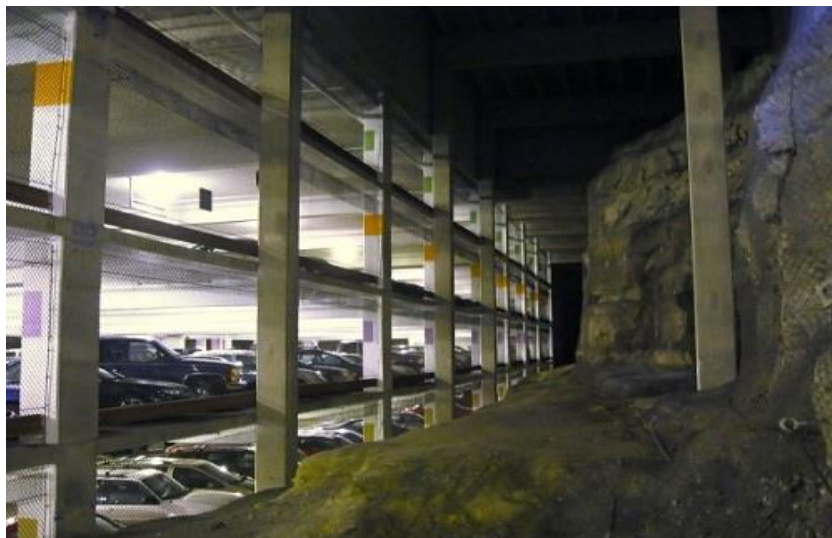
The vehicles are parked at right angle to the road. It is an efficient system of Parking.



Perpendicular Parking

### **Off Street Parking**

As the name suggests, Off street Parking means a Parking Area is designed adjacent to the Road or in a place or building which is not the part of the road.



Parking lot

**Here are some of the examples of Off Street Parking:**

- Parking lots
- Bypass road
- Multistory Building Garage
- Parking Lanes