



# **SNS COLLEGE OF TECHNOLOGY**

(An Autonomous Institution)

**COIMBATORE-35**

Accredited by NBA-AICTE and Accredited by NAAC – UGC with A++ Grade

Approved by AICTE, New Delhi & Affiliated to Anna University, Chennai



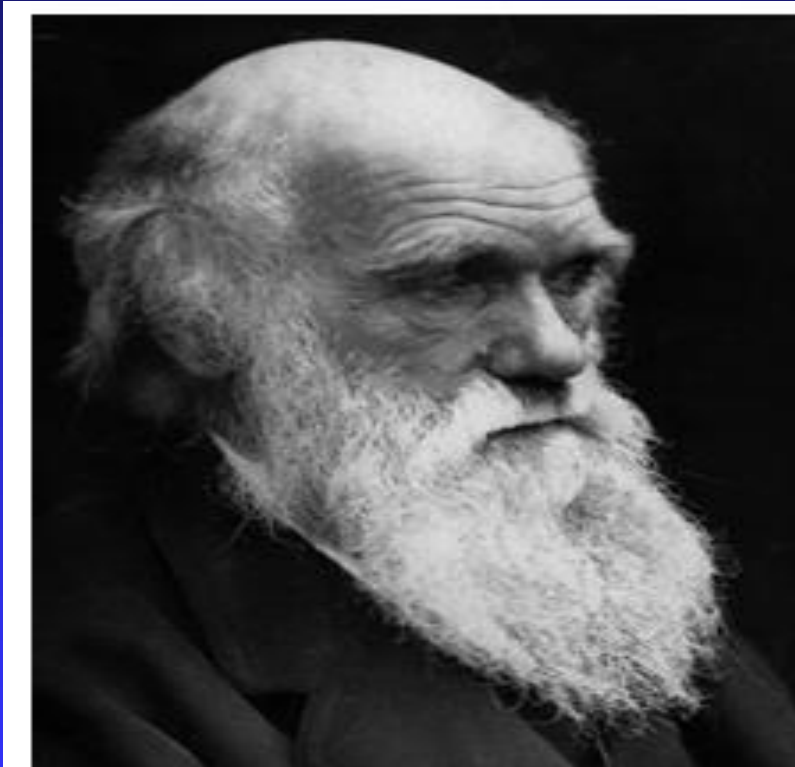
**19GET277 / Biology For Engineers**

**IV YEAR / VII SEMESTER**

**UNIT-III: GENETICS AND IMMUNE SYSTEM**

**EVOLUTION: THEORIES OF EVOLUTION**

# Charles Darwin

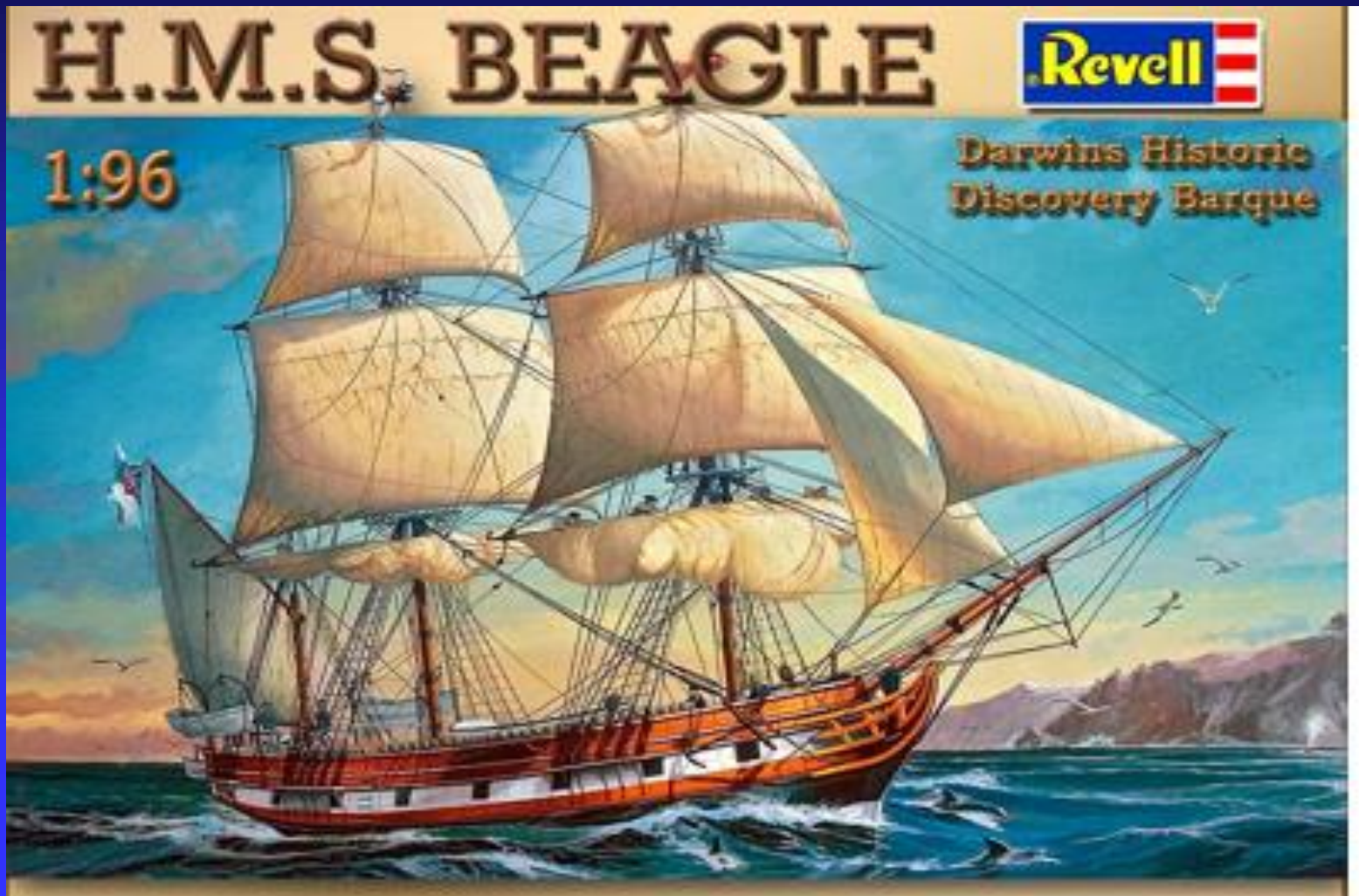


# Darwin's Theory of Evolution

- Evolution, or change over time, is the process by which modern organisms have descended from ancient organisms.
- A scientific theory is a well-supported testable explanation of phenomena that have occurred in the natural world.

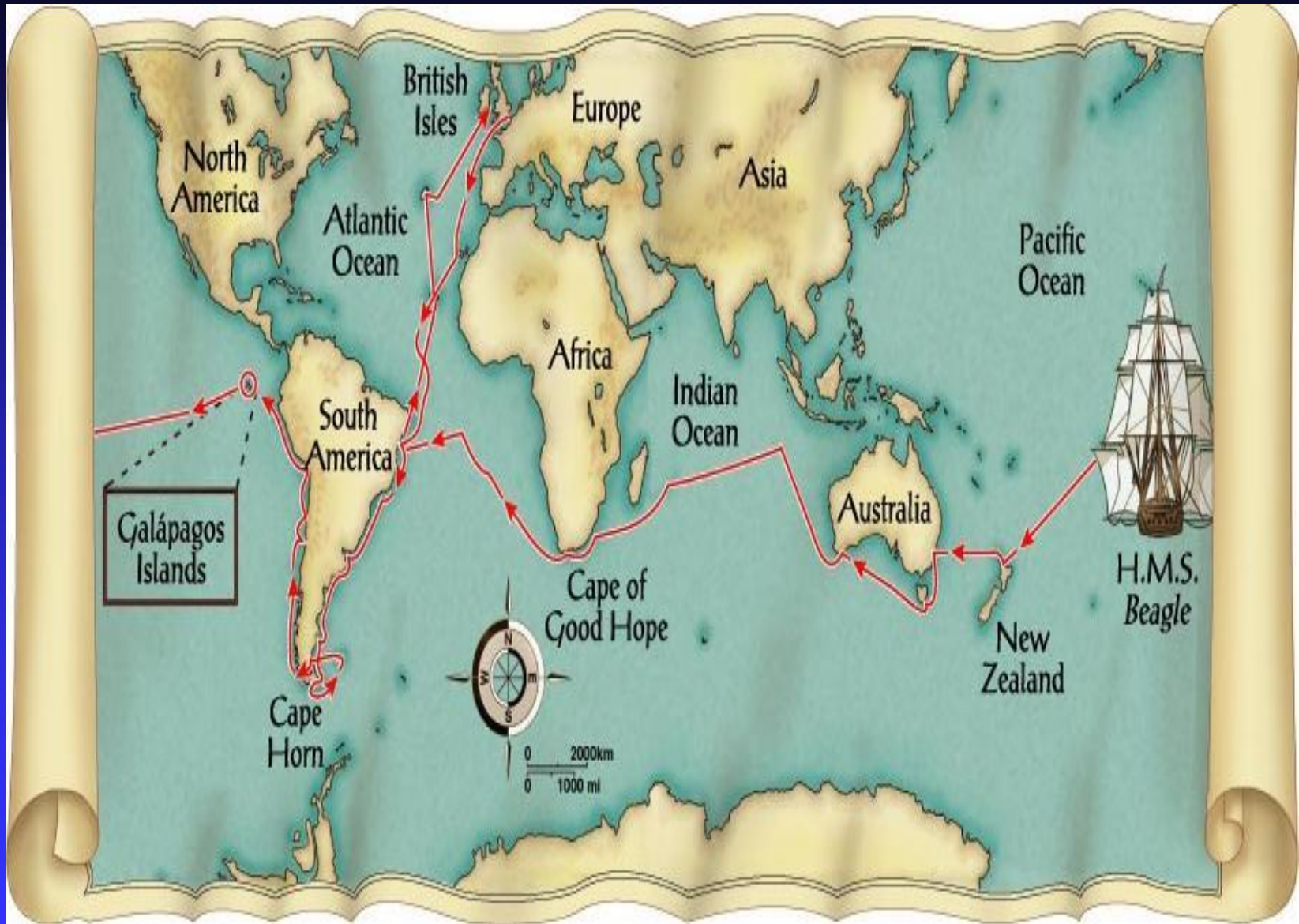
How do you think Darwin came up with his theory?

# Voyage of the Beagle



# Voyage of Beagle

- Dates: February 12th, 1831
- Captain: Charles Darwin
- Ship: H.M.S. Beagle
- Destination: Voyage around the world.
- Findings: evidence to propose a revolutionary hypothesis about how life changes over time



# Patterns of Diversity

- Darwin visited Argentina and Australia which had similar grassland ecosystems.
  - ◆ those grasslands were inhabited by very different animals.
  - ◆ neither Argentina nor Australia was home to the sorts of animals that lived in European grasslands.



# Patterns of Diversity

- Darwin posed challenging questions.
  - ◆ Why were there no rabbits in Australia, despite the presence of habitats that seemed perfect for them?
  - ◆ Why were there no kangaroos in England?

# Living Organisms and Fossils

- Darwin collected the preserved remains of ancient organisms, called fossils.
- Some of those fossils resembled organisms that were still alive today.

# Living Organisms and Fossils

- Others looked completely unlike any creature he had ever seen.
- As Darwin studied fossils, new questions arose.
  - ◆ Why had so many of these species disappeared?
  - ◆ How were they related to living species?

# Fossils

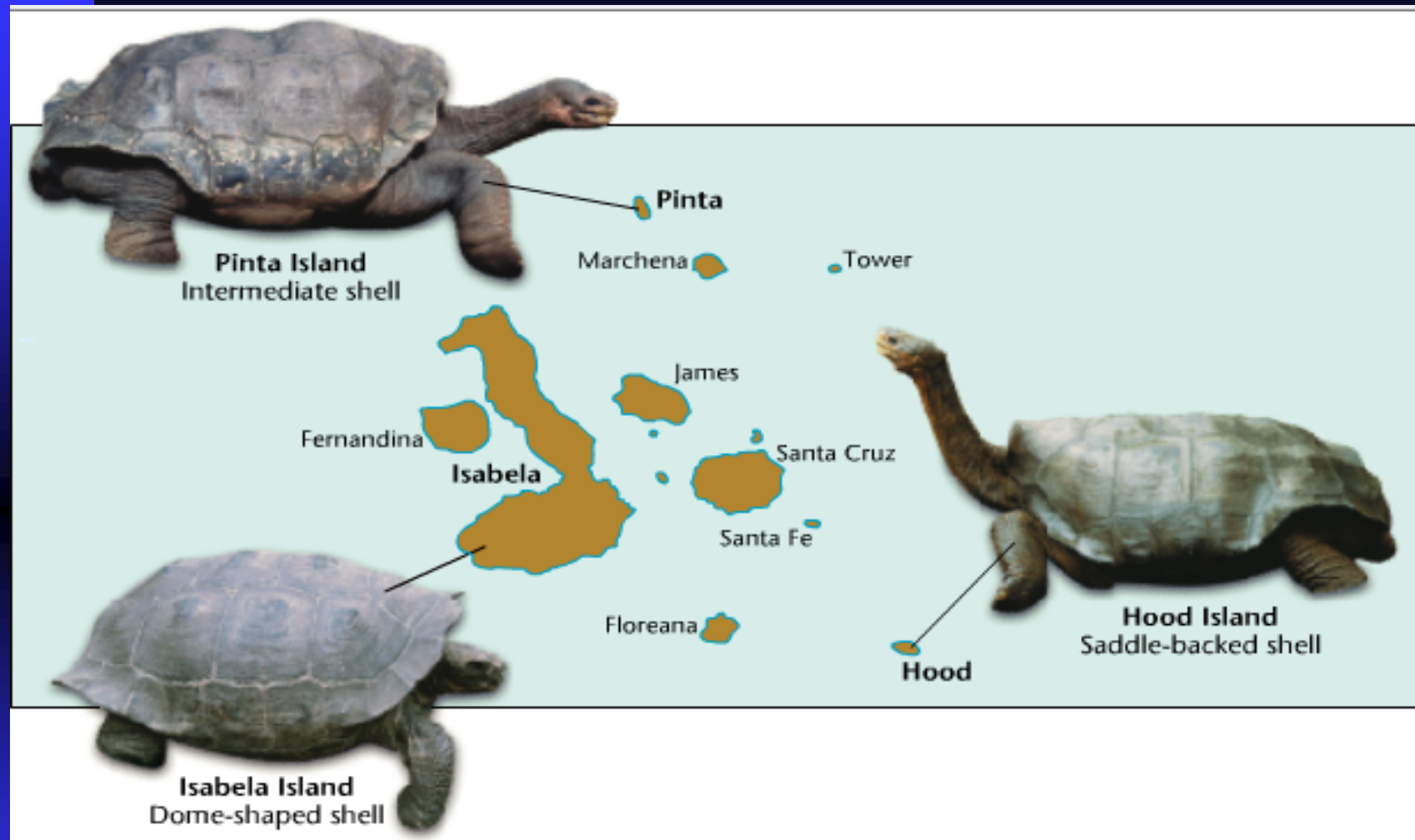


# The Galapagos Island

- The smallest, lowest islands were hot, dry, and nearly barren-Hood Island-sparse vegetation
- The higher islands had greater rainfall and a different assortment of plants and animals-Isabela- Island had rich vegetation.

# The Galapagos Island

- Darwin was fascinated in particular by the land tortoises and marine iguanas in the Galápagos.
- Giant tortoises varied in predictable ways from one island to another.
- The shape of a tortoise's shell could be used to identify which island a particular tortoise inhabited.



t. © D. Cavagnaro/DRK Photo; b.r. © David Cavagnaro/DRK Photo;  
 b.l. © D. Cavagnaro/DRK Photo

**Variation Among Tortoises**



Darwin observed that the characteristics of many animals and plants varied noticeably among the different Galápagos Islands. Among the tortoises, the shape of the shell corresponds to different habitats. The Hood Island tortoise (right) has a long neck and a shell that is curved and open around the neck and legs, allowing the tortoise to reach the sparse vegetation on Hood Island. The tortoise from Isabela Island (lower left) has a dome-shaped shell and a shorter neck. Vegetation on this island is more abundant and closer to the ground. The tortoise from Pinta Island has a shell that is intermediate between these two forms.

# Animals found in the Galapagos

- Land Tortoises
- Darwin Finches
- Blue-Footed Booby
- Marine Iguanas



# Animals

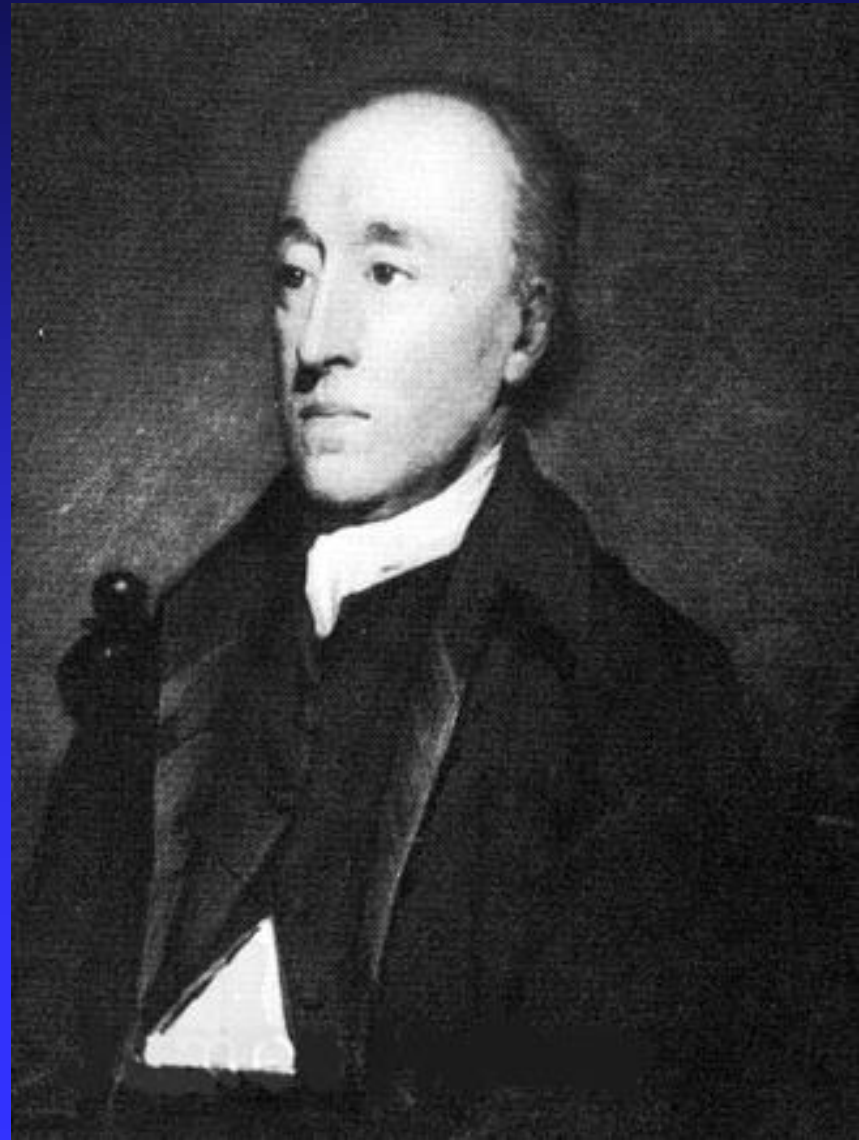


# The Journey Home

- Darwin Observed that characteristics of many plants and animals vary greatly among the islands
- **Hypothesis:** Separate species may have arose from an original ancestor

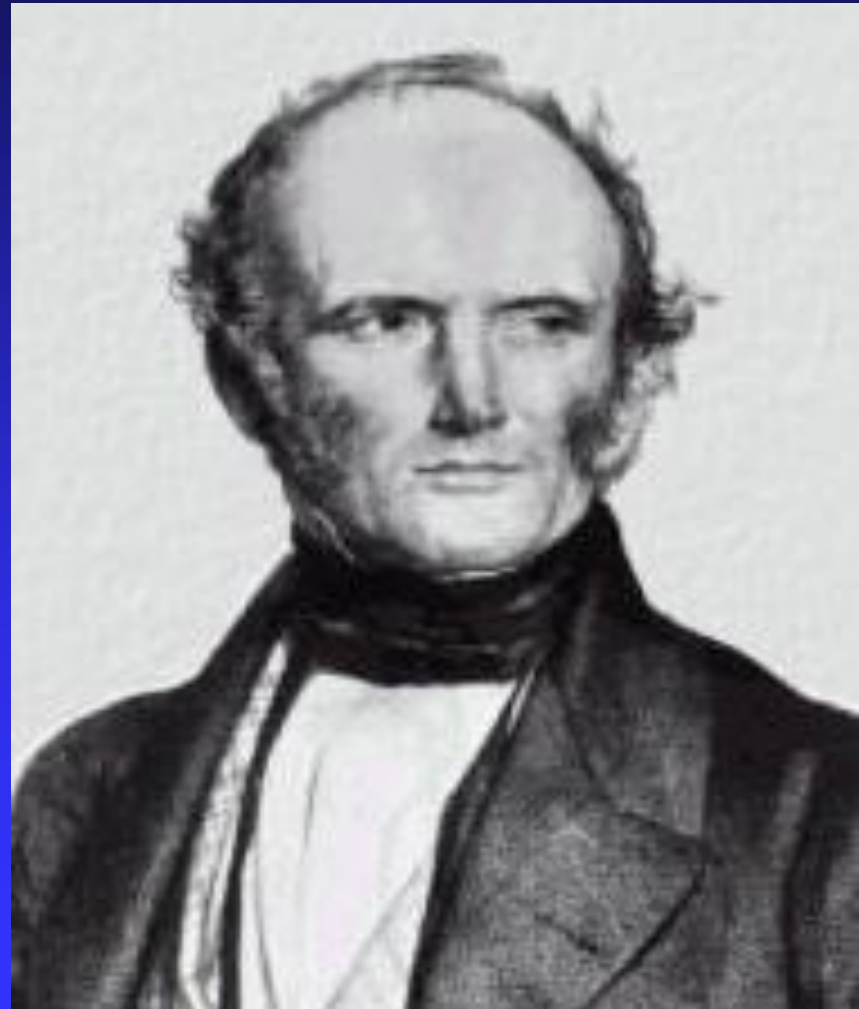
# Ideas that shaped Darwin's Thinking

- **James Hutton:**
- 1795 Theory of Geological change
  - ◆ Forces change earth's surface shape
  - ◆ Changes are slow
  - ◆ Earth much older than thousands of years



# Ideas that Shaped Darwin's Thinking

- **Charles Lyell**
- Book: *Principles of Geography*
- Geographical features can be built up or torn down
- Darwin thought if earth changed over time, what about life?



# Lamarck



# Lamarck's Theory of Evolution

- Tendency toward Perfection(Giraffe necks)
- Use and Disuse (bird's using forearms)
- Inheritance of Acquired Traits

# LAMARCK'S GIRAFFE

Original short-necked ancestor



Keeps stretching neck to reach leaves higher up on tree

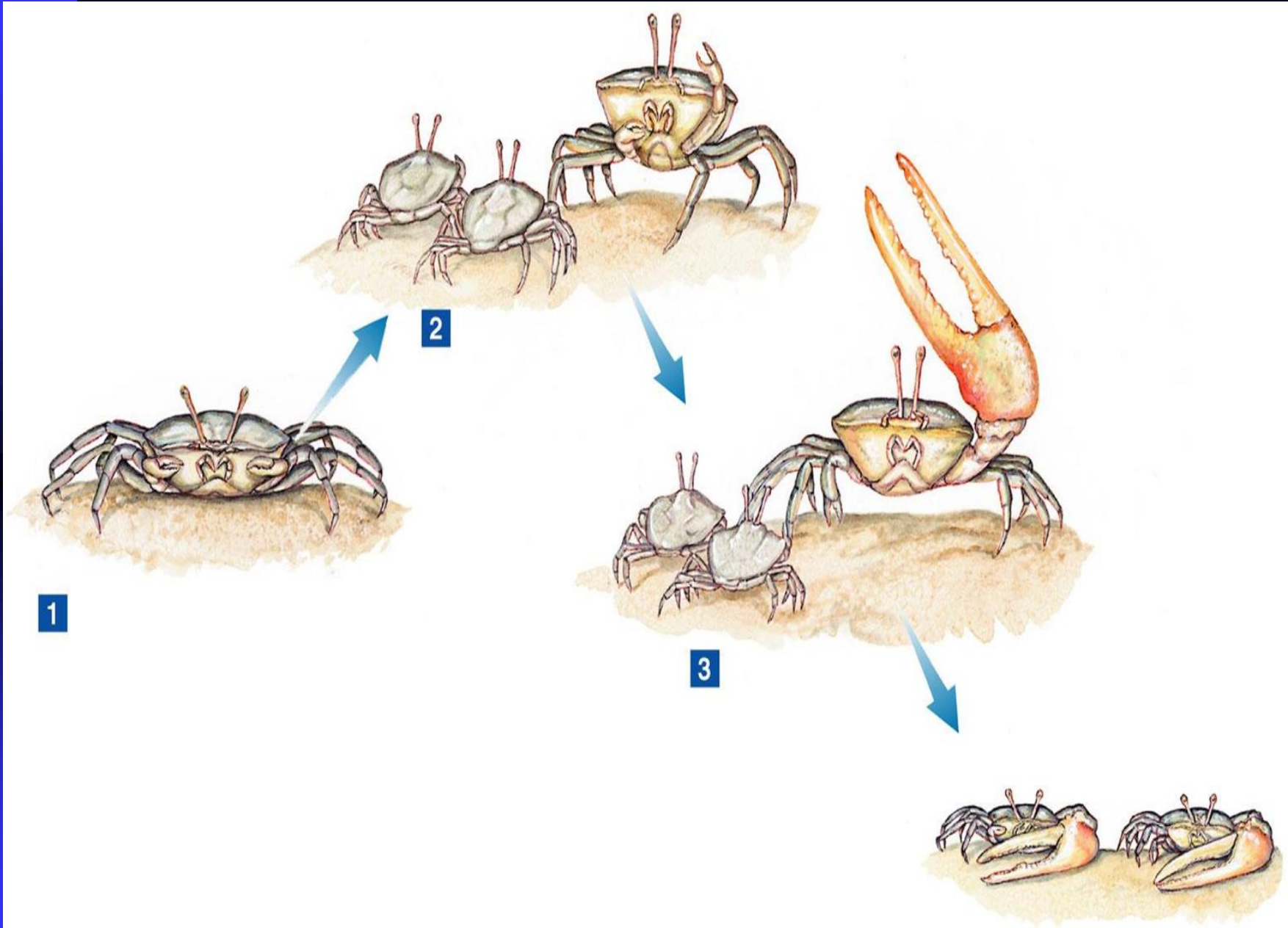


and stretching



and stretching until neck becomes progressively longer







# Population Growth

- **Thomas Malthus-**  
19th century English  
economist
- If population grew  
(more Babies born  
than die)
  - ◆ Insufficient living  
space
  - ◆ Food runs out
  - ◆ Darwin applied this  
theory to animals



# Publication of Origin of Species

- Russel Wallace wrote an essay summarizing evolutionary change from his field work in Malaysia
- Gave Darwin the drive to publish his findings



# Natural Selection & Artificial Selection

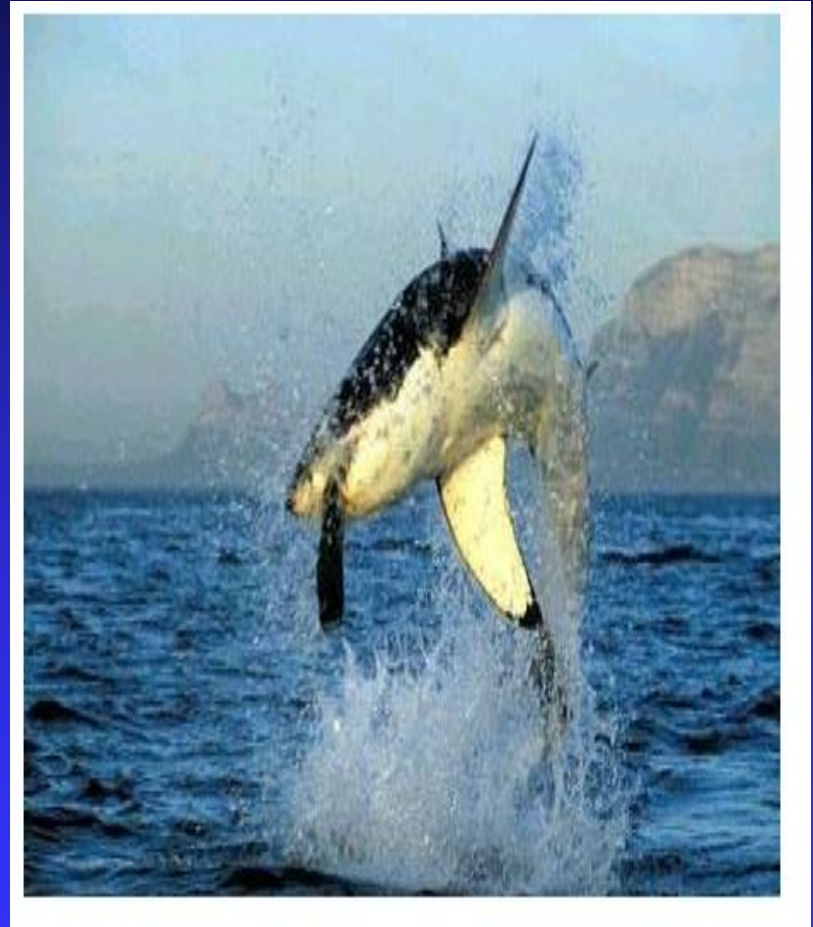
- **Natural variation**--differences among individuals of a species
- **Artificial selection**- nature provides the variation among different organisms, and humans select those variations they find useful.

# Evolution by Natural Selection

- **The Struggle for Existence**-members of each species have to compete for food, shelter, other life necessities
- **Survival of the Fittest**-Some individuals better suited for the environment

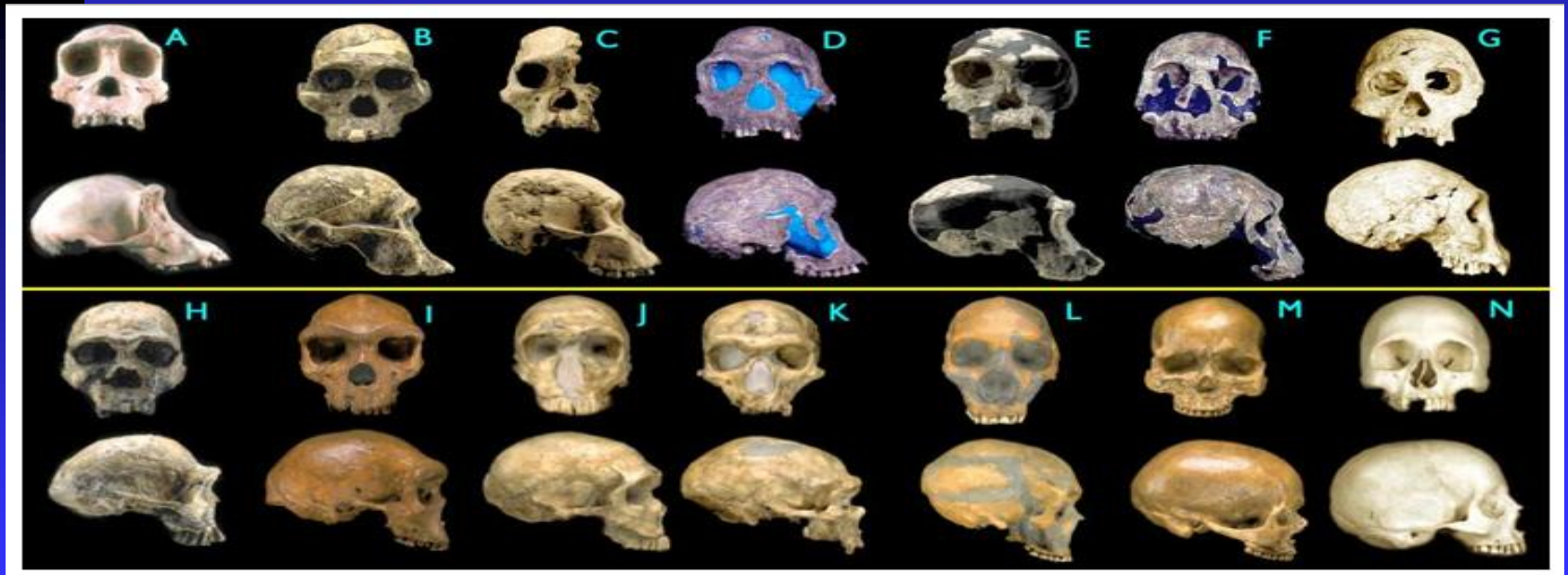
# Natural Selection

- Over time, natural selection results in changes in inherited characteristics of a population. These changes increase a species fitness in its environment



# Descent

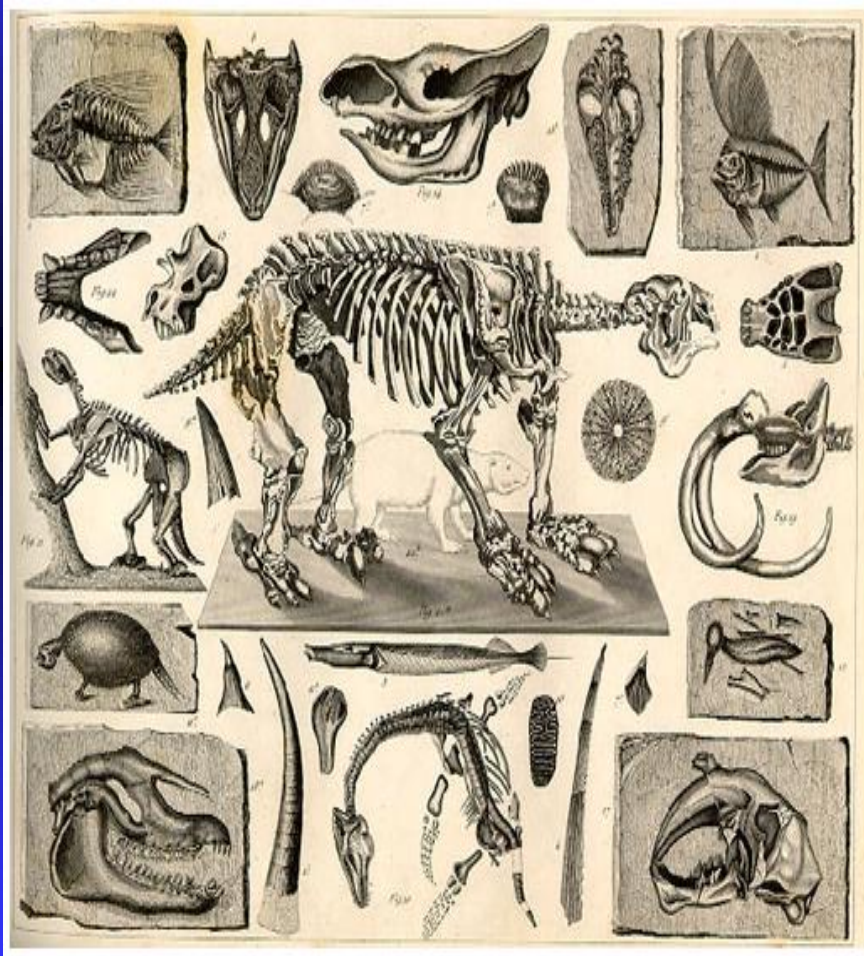
- **Descent with Modification**-Each living organism has descended, with changes from other species over time
- **Common Descent**- were derived from common ancestors



# Evidence of Evolution

- **The Fossil Record**
- **Geographic Distribution of Living Things**
- **Homologous Body Structures**
- **Similarities in Early Development**

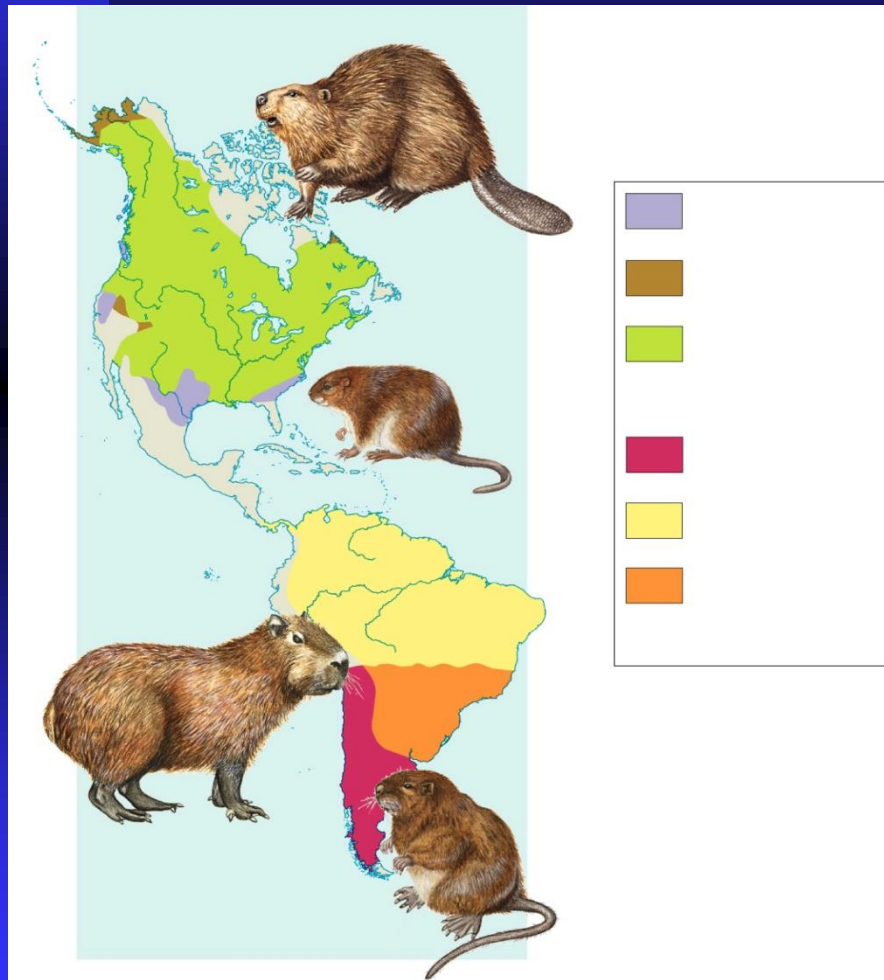
# Evidence for Evolution



- **The Fossil Record-**  
Layer show change
- **Geographic**  
Distribution of Living  
Things
- **Homologous Body**  
Structures
- **Similarities in Early**  
Development



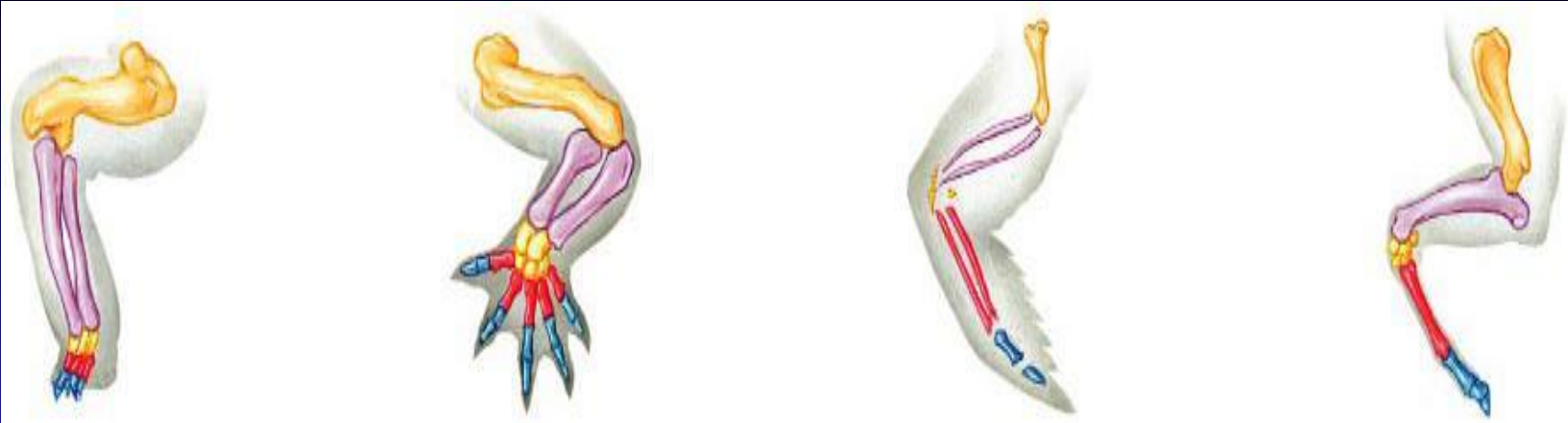
# Evidence of Evolution



- The Fossil Record
- **Geographic Distribution of Living Things**-similar environments have similar types of organisms
- Homologous Body Structures
- Similarities in Early Development

# Homologous Structures

- **Homologous Structures**-structures that have different mature forms in different organisms, but develop from the same embryonic tissue



# Evidence for Evolution

- **Vestigial organs**-organs that serve no useful function in an organism
- i.e.) appendix, miniature legs, arms



# Similarities in Early Development

## Comparative Embryology



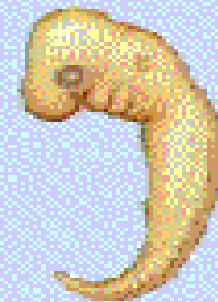
**fish**



**reptile**



**bird**



**human**

# Summary of Darwin's Theory

- Individuals in nature differ from one another
- Organisms in nature produce more offspring than can survive, and many of those who do not survive do not reproduce.

# Summary of Darwin's Theory

- Because more organisms are produced than can survive, each species must struggle for resources
- Each organism is unique, each has advantages and disadvantages in the struggle for existence



# Summary (cont.)

- Individuals best suited for the environment survive and reproduce most successful
- Species change over time

# Summary (cont.)

- Species alive today descended with modification from species that lived in the past
- All organisms on earth are united into a single family tree of life by common descent



*Mesonychia*



*Ambulocetus*



*Rodhocetus*



*Basilosaurus*