



SNS COLLEGE OF TECHNOLOGY

AN AUTONOMOUS INSTITUTION

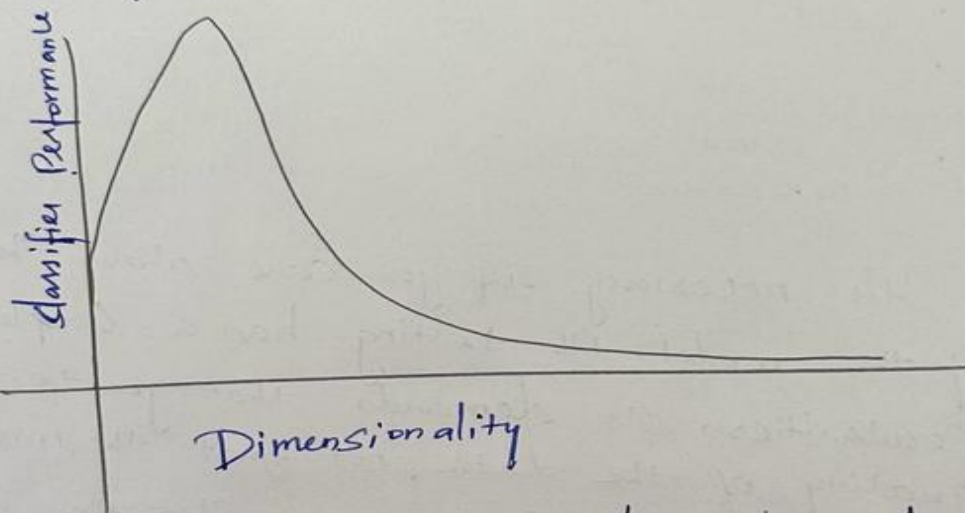
COIMBATORE 35

DEPARTMENT OF ELECTRONICS AND COMMUNICATION ENGINEERING



Curse of Dimensionality

As the dimensionality of the features space increases the number configurations can grow exponentially and thus the number of configurations covered by an observation decreases.



Reduce the number of dimensions because,

- Efficiency
- Measurement Costs
- Computation Costs
- Classification Performance
- Storage Costs
- Ease of interpretation
- Modeling