



# **SNS COLLEGE OF ENGINEERING**

**Kurumbapalayam (Po), Coimbatore - 641 107**

**An Autonomous Institution**

**Accredited by NBA - AICTE and Accredited by NAAC - UGC with 'A' Grade**

**Approved by AICTE, New Delhi & Affiliated to Anna University, Chennai**



## **DEPARTMENT OF MANAGEMENT STUDIES**

**COURSE NAME : 19BA101- MANAGEMENT AND ORGANISATIONAL BEHAVIOUR**

**I YEAR /I SEMESTER**

**Unit 2- Functions of Management**

**Topic -2.2: The Nature of Organizing and Organisational Structure**



## ORGANIZING

- ◀ ‘Organising’ refers to a dynamic process and a managerial activity by which different elements or parts of an enterprise are brought together to obtain a desired result.
- ◀ This process places the enterprise into:
  - ◀ Working order by defining and allocating the duties and responsibilities of different employees
  - ◀ Provides it with everything useful to its functioning—raw material, tools, capital and personnel.
  - ◀ Combines and co-ordinates their activities for commonness of purpose



## NATURE OF ORGANIZING

- ◀ Identification of activities
- ◀ Grouping of activities
- ◀ Acclimation of resources
- ◀ Defining hierarchy of position
- ◀ Assignment of jobs
- ◀ Establishing authority and responsibility of job
- ◀ Evaluation of performance



# ORGANIZATION STRUCTURE



- ◀ An organizational structure is simply the pattern or network of division of these roles and responsibilities.
- ◀ which person has to perform which task is what the organizational structure explains.
- ◀ The structure of an organization should always be dynamic.
- ◀ Types of Organization Structure:
  - ◀ An organization's structure is typically represented by an **organization chart**
  - ◀ a diagram showing the interrelationships of its positions.
  - ◀ highlights the chain of command, or the authority relationships among people working at different levels.

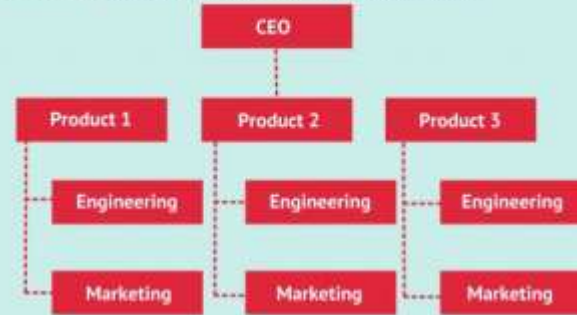


## Siloed

**Functional** *Organized based on the company's key functions*



**Divisional** *Organized based on the company's key products*



**Matrix** *Organized based on cross-functional teams and functions*



**Flat** *Organized based on self-management and a lack of managerial structures*





<https://www.youtube.com/watch?v=3yVsOSbbPhc>



THANK YOU