



SNS COLLEGE OF ENGINEERING



Kurumbapalayam(Po), Coimbatore - 641 107

Accredited by NAAC-UGC with 'A' Grade

Approved by AICTE, Recognized by UGC & Affiliated to Anna University, Chennai

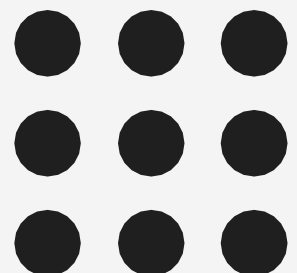
Department of Information Technology

Course Name - IT8075 Software Project Management

IV Year / VII Semester

Unit 1 - Project Evaluation and Project Planning

Topic 2 - Activities Covered By SPM



Activities Covered By SPM

- Not only Actual writing
- Other activities also involved
- GUESS THE PICTURES



```
C:\Users\Alexander\Documents\Scripts>java HelloWorld  
Hello, World!  
  
C:\Users\Alexander\Documents\Scripts>
```

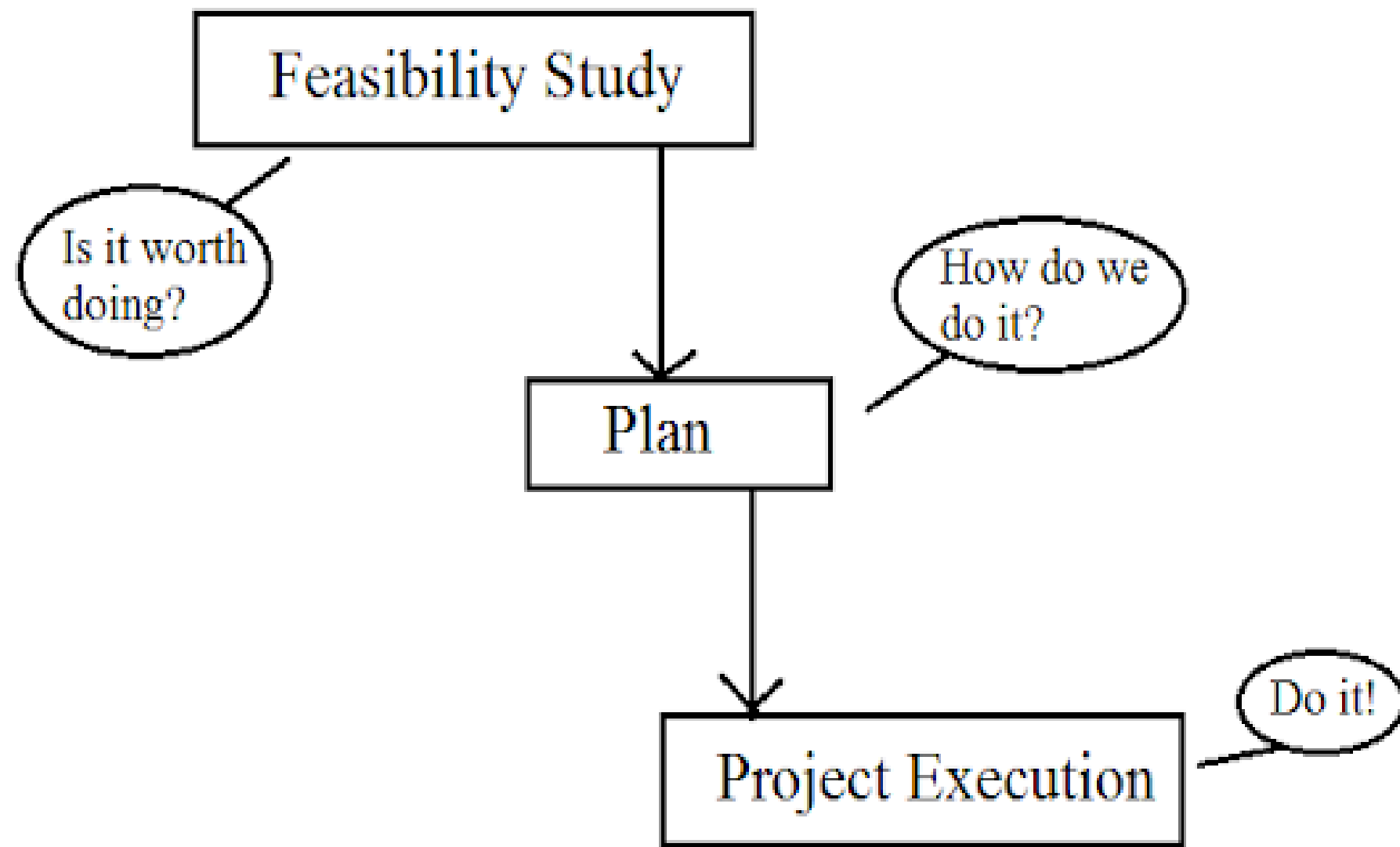
Activities Covered By SPM

Process in Project Development

The Feasibility Study

Planning

Project Execution



Activities Covered By SPM

ISO 12207 – Software Development Activities

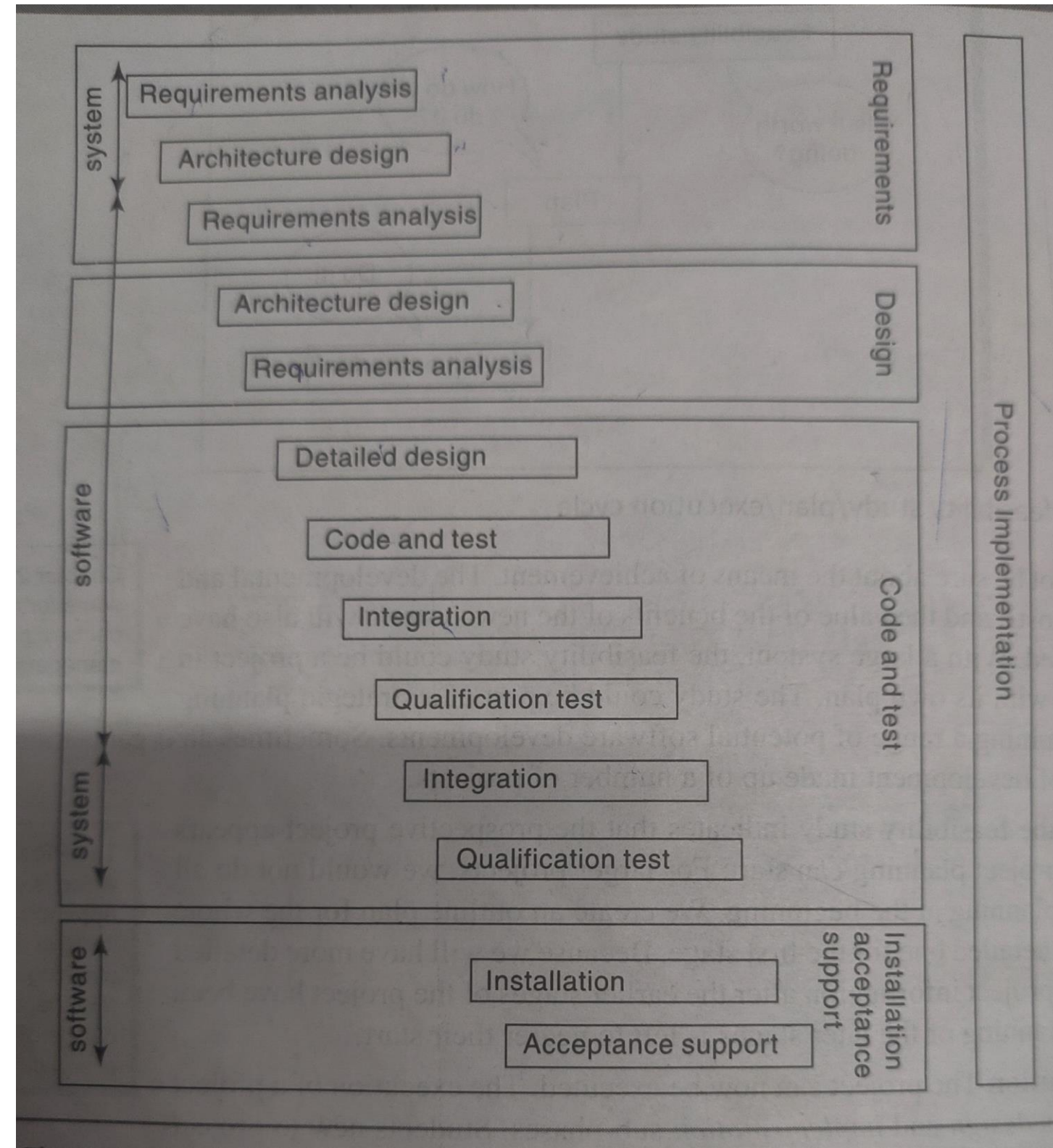
- Some related to system
- Some related to Software
- Software - one part of project

Other includes

- ICT infrastructure
- Design of user jobs
- User Training



Activities Covered By SPM



Activities Covered By SPM

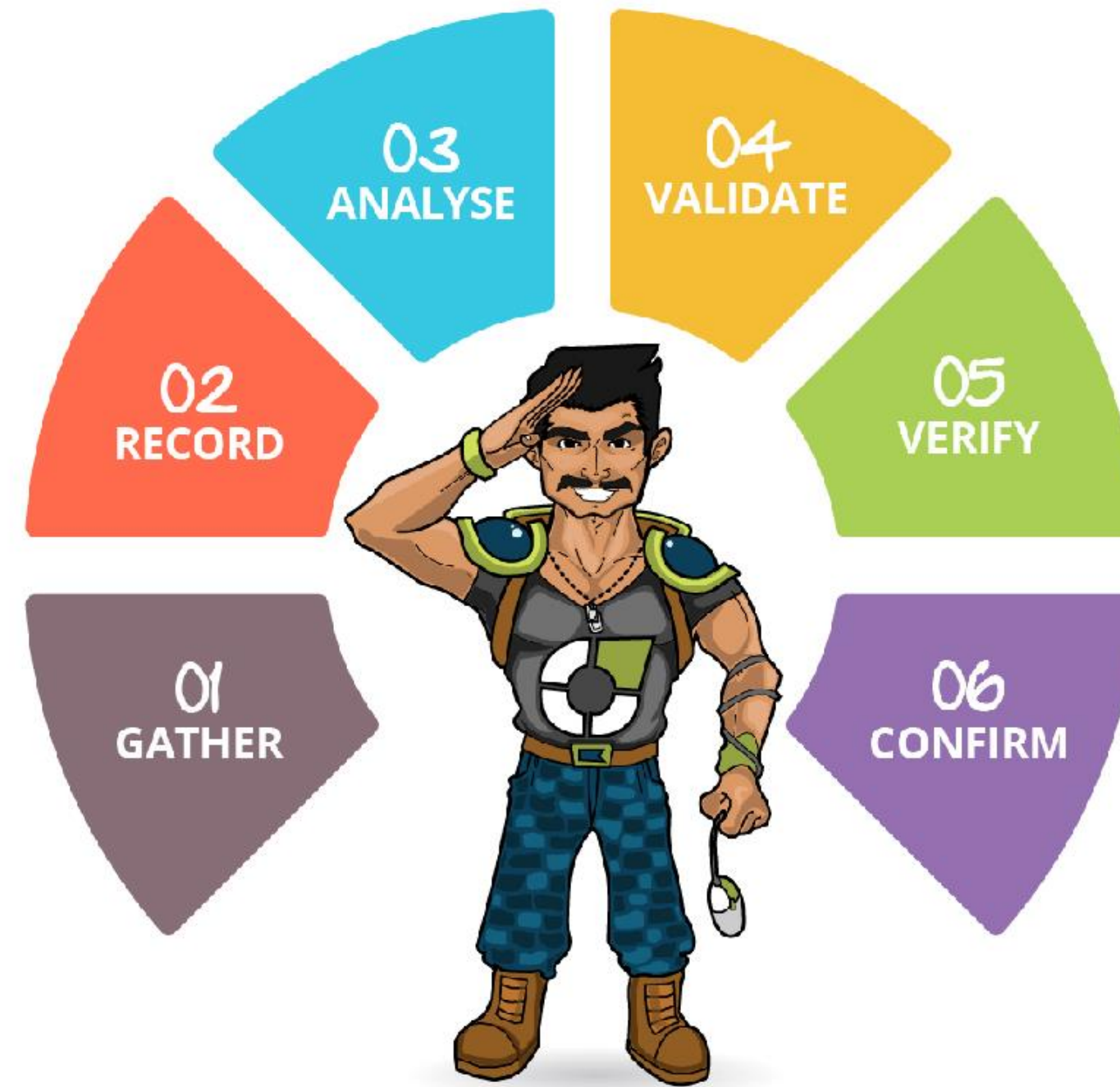
Requirement Analysis

Requirement Elicitation –
Requirement Gathering

Analysis: converting ‘customer-facing’ requirements into equivalents that developers can Understand

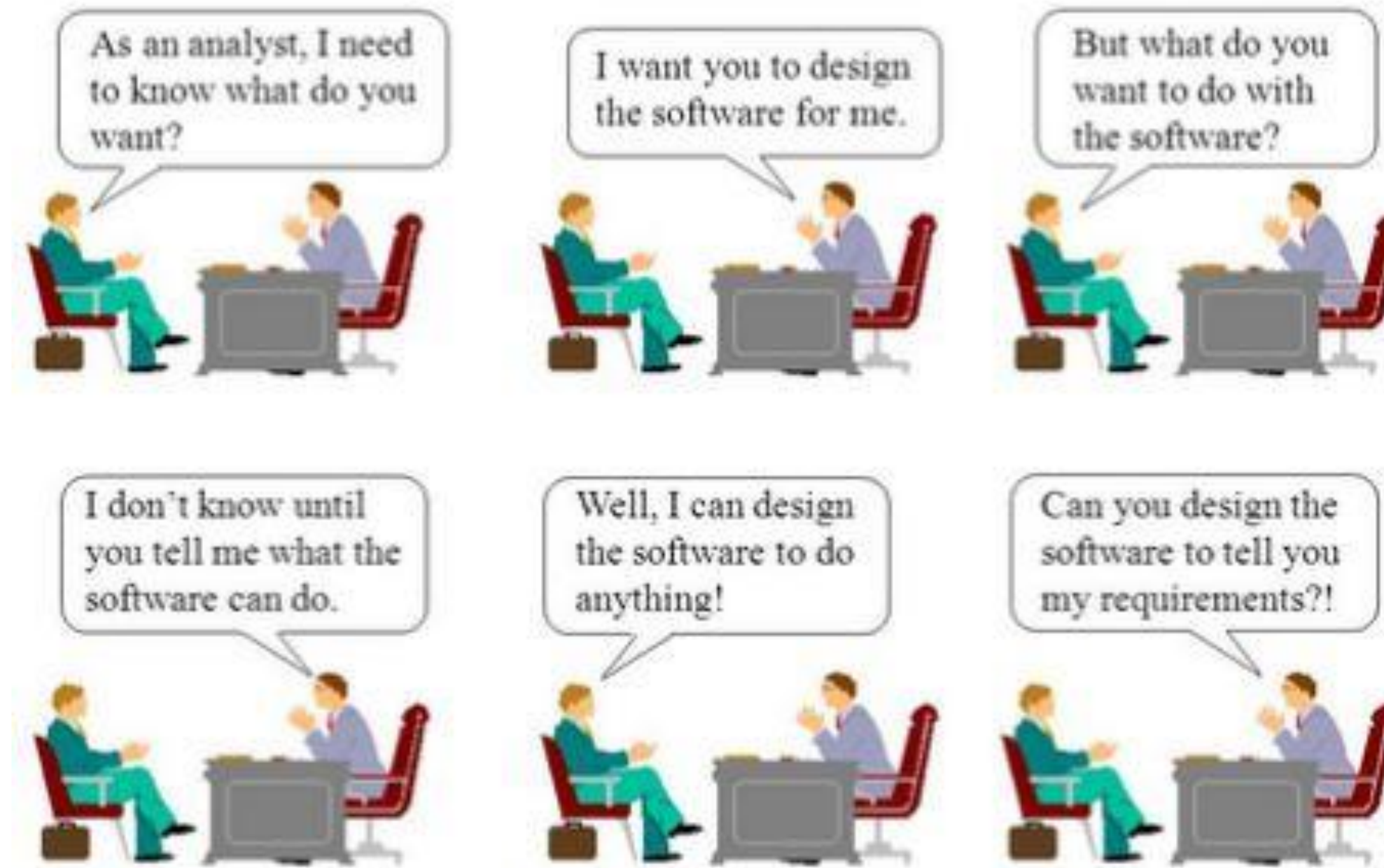
Requirements will cover

- Functions
- Quality
- Cost (Resource Requirement)



Activities Covered By SPM

Challenges of Requirements Elicitation



Activities Covered By SPM

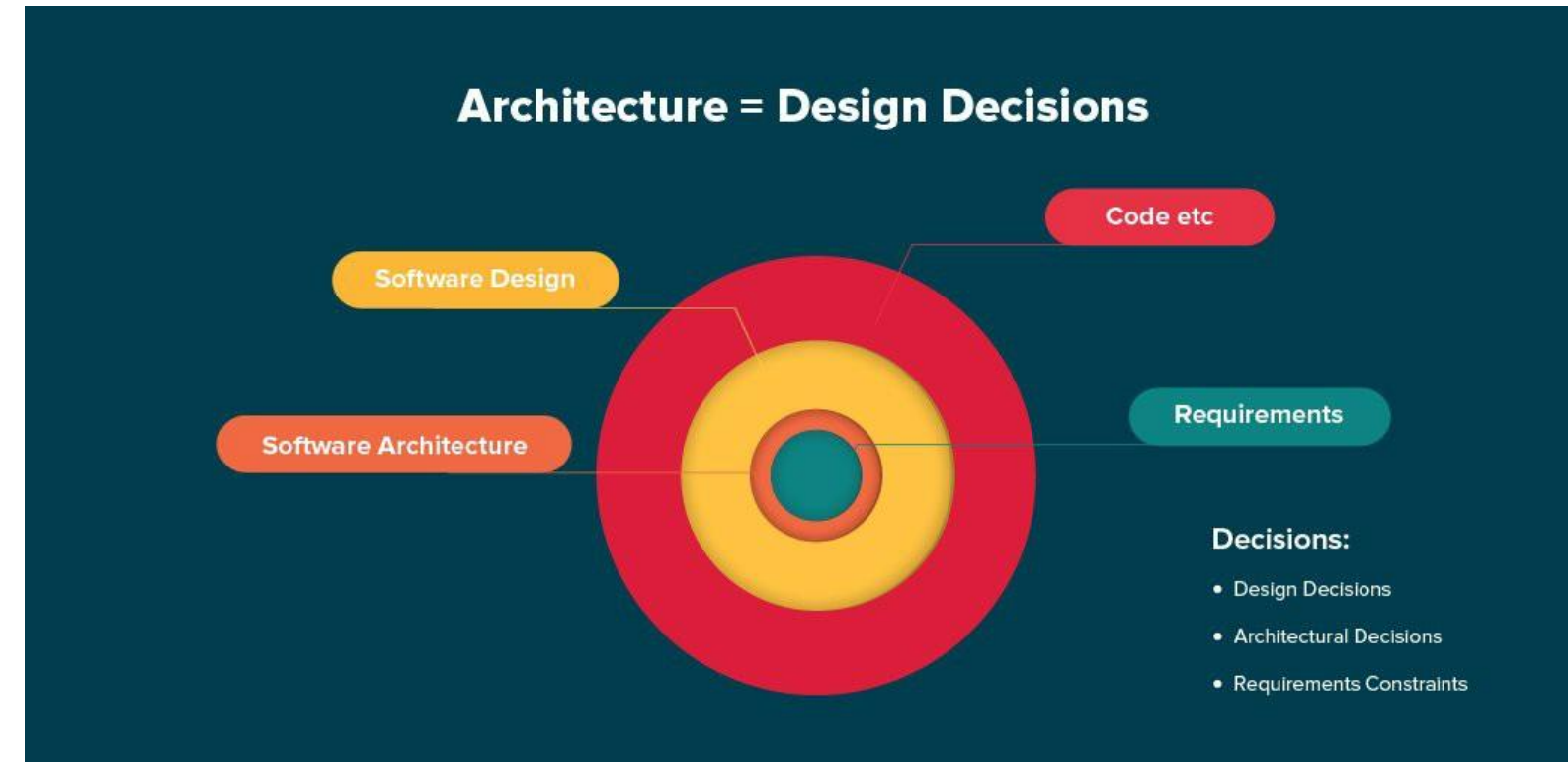
Architecture design

– Based on system requirements

– Defines components of system:
hardware,
software,
organizational

– Software requirements derived from system architecture

-Maps software requirements to software components



Activities Covered By SPM

Detailed design

Each component made up of several software units.
Each units separately coded and tested.

Coding and Testing

Write code for each software units
Testing, Debugging individual units



Integration

Putting the components together
Components are tested together
Combining and testing software elements with H/W platforms

Activities Covered By SPM

Qualification Testing

Test to ensure quality
Check all requirements have been fulfilled.



Installation

Make new system operational
Setting up standing data
Setting system parameter
Installing s/w into h/w platform
User training



Activities Covered By SPM

Acceptance Support

Resolving problems
Correction of errors
Extension and Improvements





THANK YOU