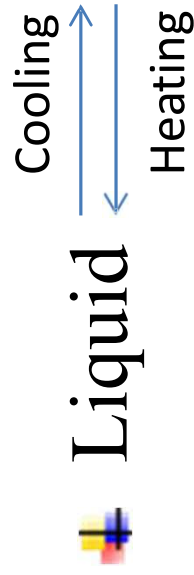
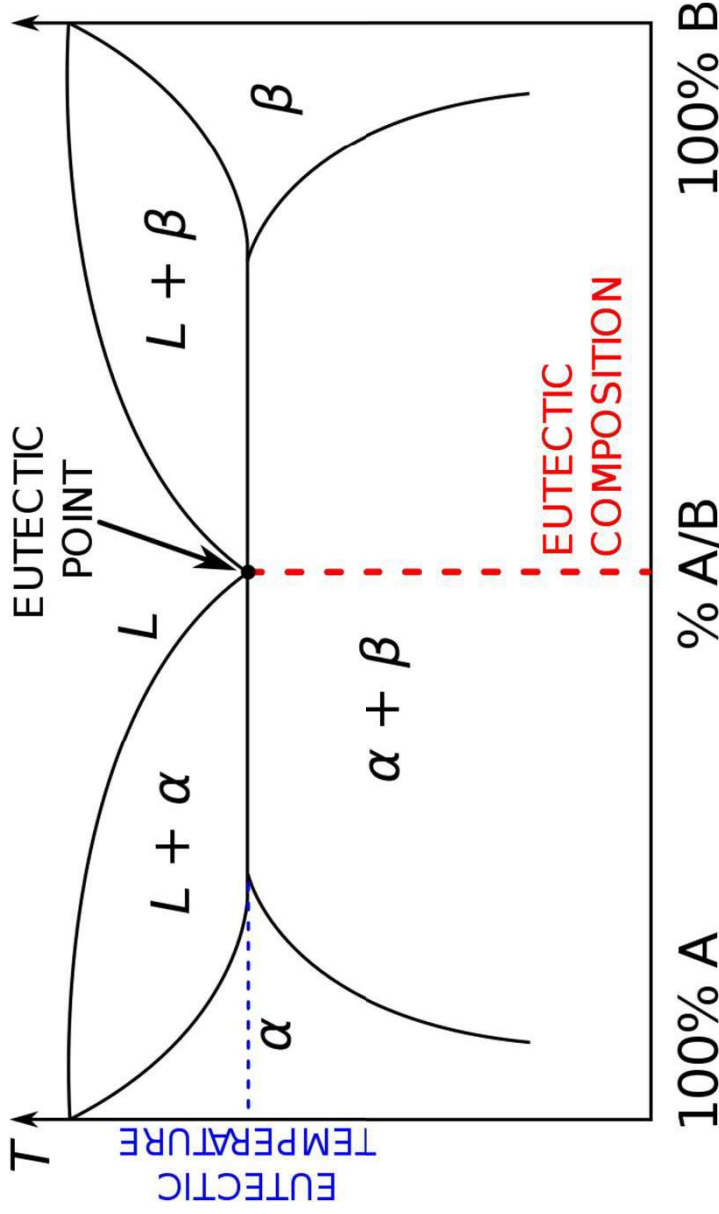
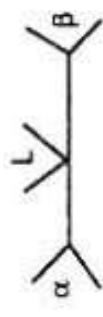




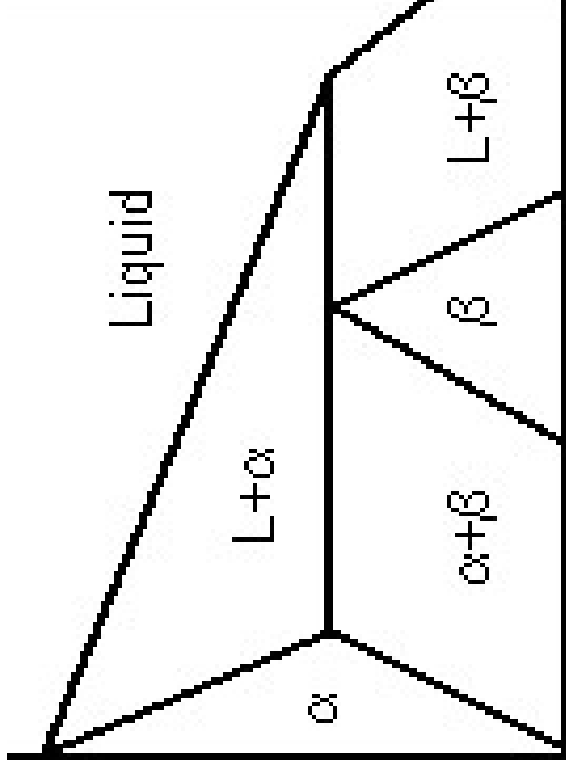
Eutectic Reaction



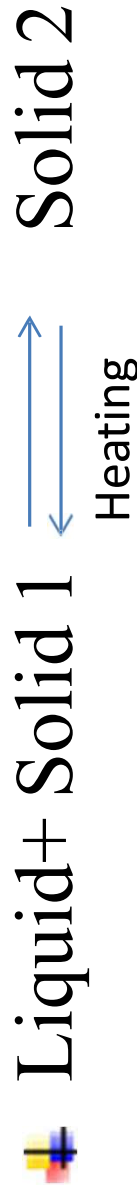
Phase diagram
Characteristics



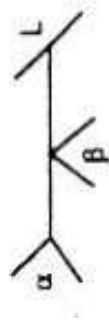
Peritectic Reaction



Examples: Iron-carbon system



Phase diagram
Characteristics



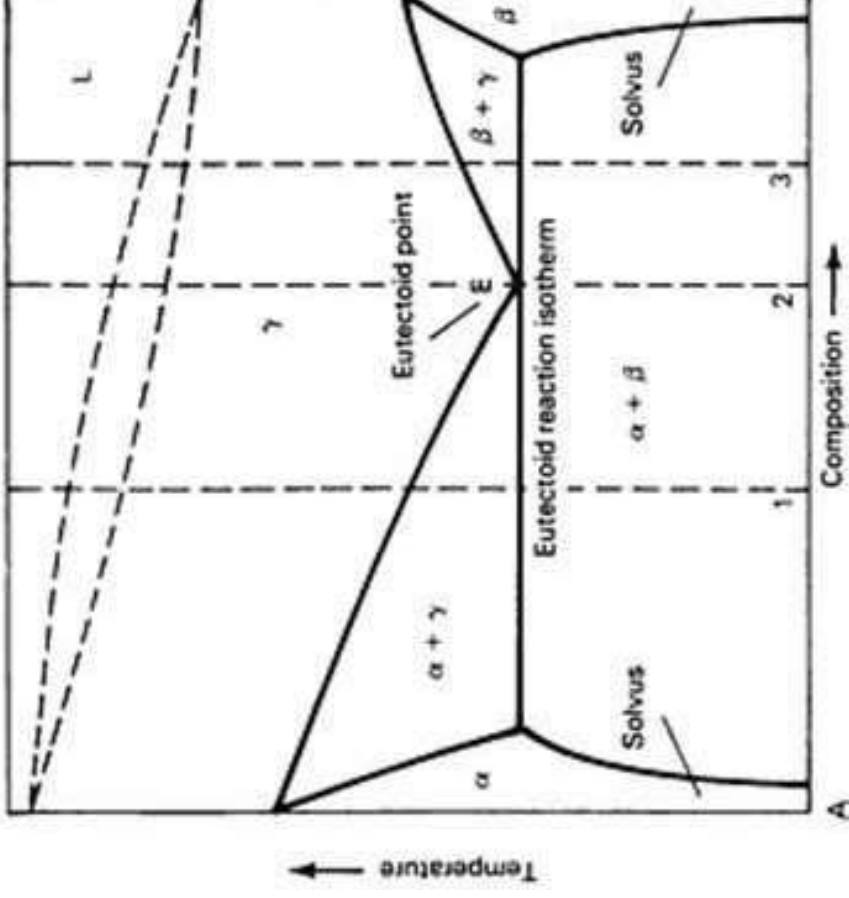


Eutectoid Reaction

Ex: Cu-Al,

Al-Mn,

Cu-Zn



Cooling

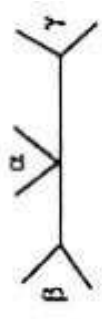


Heating

Solid 1

Solid 2 + Solid 3

Phase diagram
Characteristics



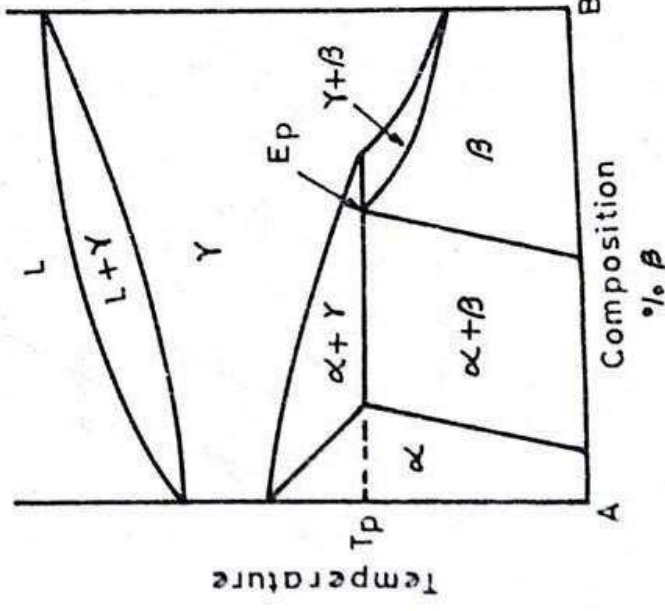


Peritectoid Reaction



Ex: Ni-Zn,

Cu-Sn,



A peritectoid diagram.

