

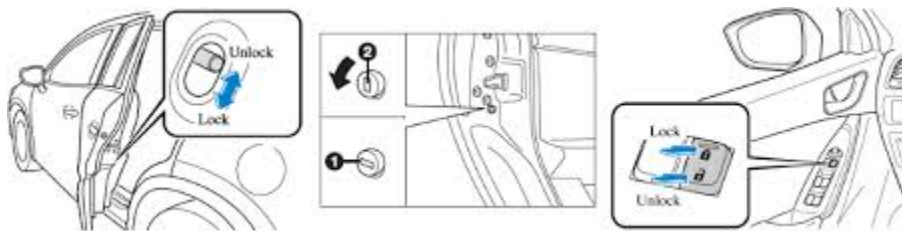
Collision warning systems are vital safety features, providing drivers with timely alerts to prevent accidents or reduce their impact.

Drivers should be educated about their proper use and limitations to maximize their effectiveness.

Child lock class notes

Certainly, here are some class notes on child locks in vehicles:

Title: Child Locks in Vehicles



Definition:

Child locks are safety features in vehicles designed to prevent the rear doors from being opened from the inside, usually by passengers in the rear seats, such as children.

Purpose:

Child locks serve to enhance the safety of children and passengers in the rear seats by preventing accidental door openings while the vehicle is in motion.

Components:

Child locks are typically built into the rear doors of vehicles and can be activated or deactivated by the driver or vehicle occupants.

Activation and Deactivation:

Child locks are manually operated and can usually be toggled using a switch or button located on the interior panel of the rear doors.

Activating the child lock prevents the door from being opened from the inside, even if the door handle is pulled.

Deactivating the child lock allows normal operation of the door from the inside.

Key Features and Considerations:

**Safety:** Child locks are an important safety feature, especially for families with young children, as they prevent accidental door openings that could lead to falls or injuries.

**Location:** Explain where the child lock controls are typically located in a vehicle (e.g., near the door latch on the rear doors).

**Visibility:** Emphasize the importance of clear labeling or indicators that show whether the child lock is active or inactive.

**Responsibility:** Discuss that it is the responsibility of adult passengers or the driver to activate and deactivate the child locks as needed.

**Emergency Escape:** Highlight that child locks can be deactivated easily from the outside, allowing emergency responders to open the rear doors in case of an accident.

Common Use Cases:

Child locks are frequently used when driving with small children in the rear seats to prevent them from accidentally opening the doors while the vehicle is in motion.

Demonstration:

If possible, demonstrate how to activate and deactivate child locks on a vehicle for hands-on learning.

Conclusion:

Child locks are an essential safety feature in vehicles, designed to protect the youngest passengers from accidents and ensure a safe and secure journey. It is crucial for drivers and adults in the vehicle to be aware of their functionality and use them appropriately when needed.