



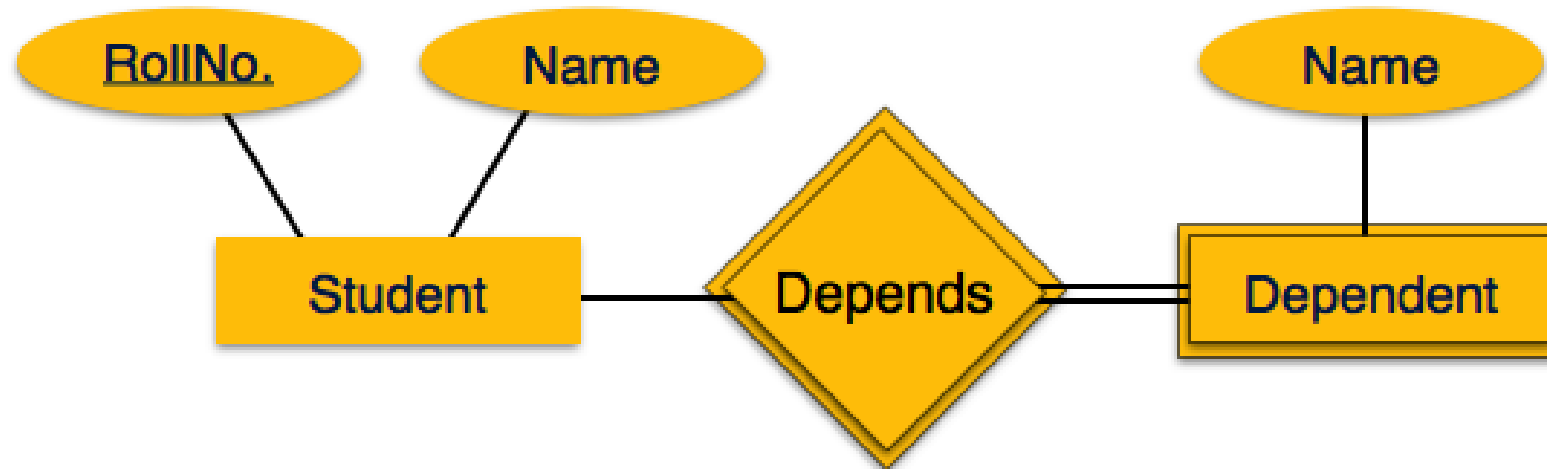
# WEAK ENTITY

- Mapping weak entity sets to relational mapping;
  - Create table for weak entity set.
  - Add all its attributes to table as field.
  - Add the primary key of identifying entity set.
  - Declare all foreign key constraints



# ER to Relational Mapping

➤ Mapping weak entity sets to relational mapping;





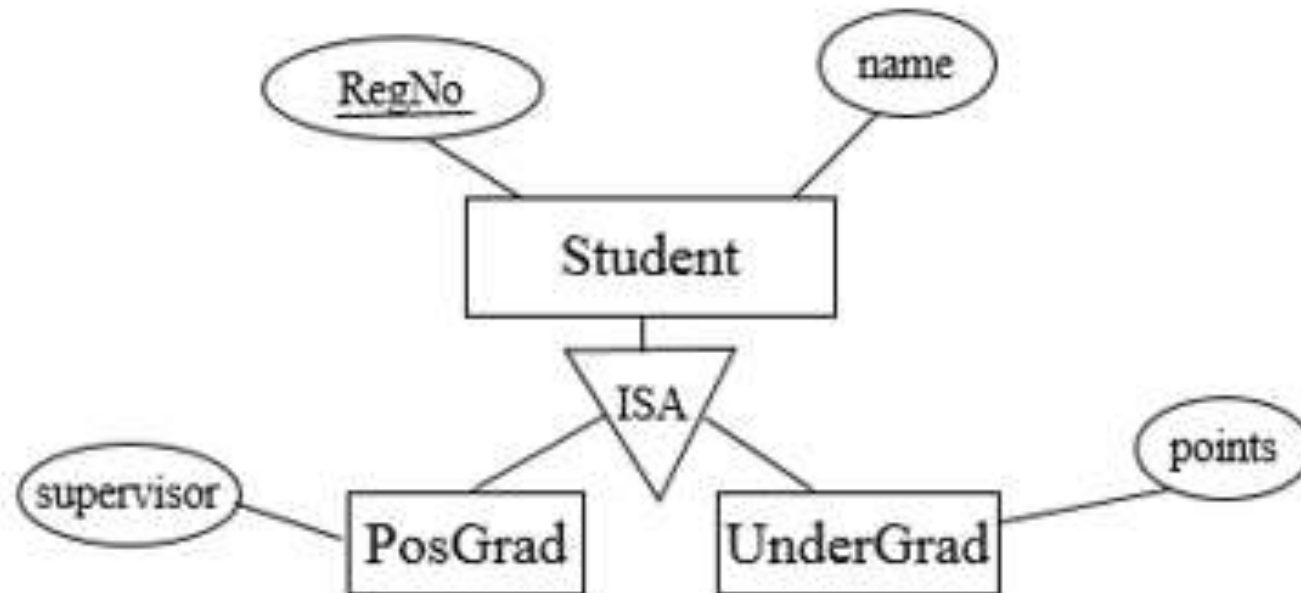
# ER to Relational Mapping

- Mapping weak entity sets to relational mapping;
- create table Dependent(RollNo int, Name char(20),Dname char(20),  
primary key (RollNo), foreign key(RollNo) references Student)



# ER to Relational Mapping

➤ Mapping specialization/generalization to relational tables :





# ER to Relational Mapping

- Mapping specialization/generalization to relational tables – Method 1:
  - All the entities in the relationship are mapped to individual tables.
  - Student (Regno, name)
  - PosGrad (Regno, supervisor)
  - UnderGrad (Regno, points)



# ER to Relational Mapping

- Mapping specialization/generalization to relational tables – Method 2:
  - Only subclasses are mapped to tables. The attributes in the superclass are duplicated in all subclasses.
  - PosGrad (Regno, name, supervisor)
  - UnderGrad (Regno, name, points)
  - This method is most preferred when inheritance is disjoint and complete



# ER to Relational Mapping

- Mapping specialization/generalization to relational tables – Method 3:
  - Only the superclass is mapped to a table. The attributes in the subclasses are taken to the superclass.
  - Student (Regno, name, supervisor, points)
  - This method will introduce null values.



Conn...

# Thank You.....